

# How to connect Fracttal One with Claude using MCP OAuth?

---

 [help.fracttal.com/hc/en-us/articles/45707827433613-How-to-connect-Fracttal-One-with-Claude-using-MCP-OAuth](https://help.fracttal.com/hc/en-us/articles/45707827433613-How-to-connect-Fracttal-One-with-Claude-using-MCP-OAuth)

Connecting Fracttal One with Claude allows you to interact with your maintenance data directly from the Claude chat, using natural language to query work orders, assets, metrics, and more, without needing to leave the assistant.

## Requirements

---

- **Have an active Fracttal One account with administrator permissions or access to Settings.**
- **Have an account on Claude (claude.ai).**
- **Have access to the API Connections section within Fracttal One.**

## Step by step

---

### 1. Access Fracttal One settings

---

Log in to your Fracttal One account. In the upper right corner, click the menu and select **Settings**.

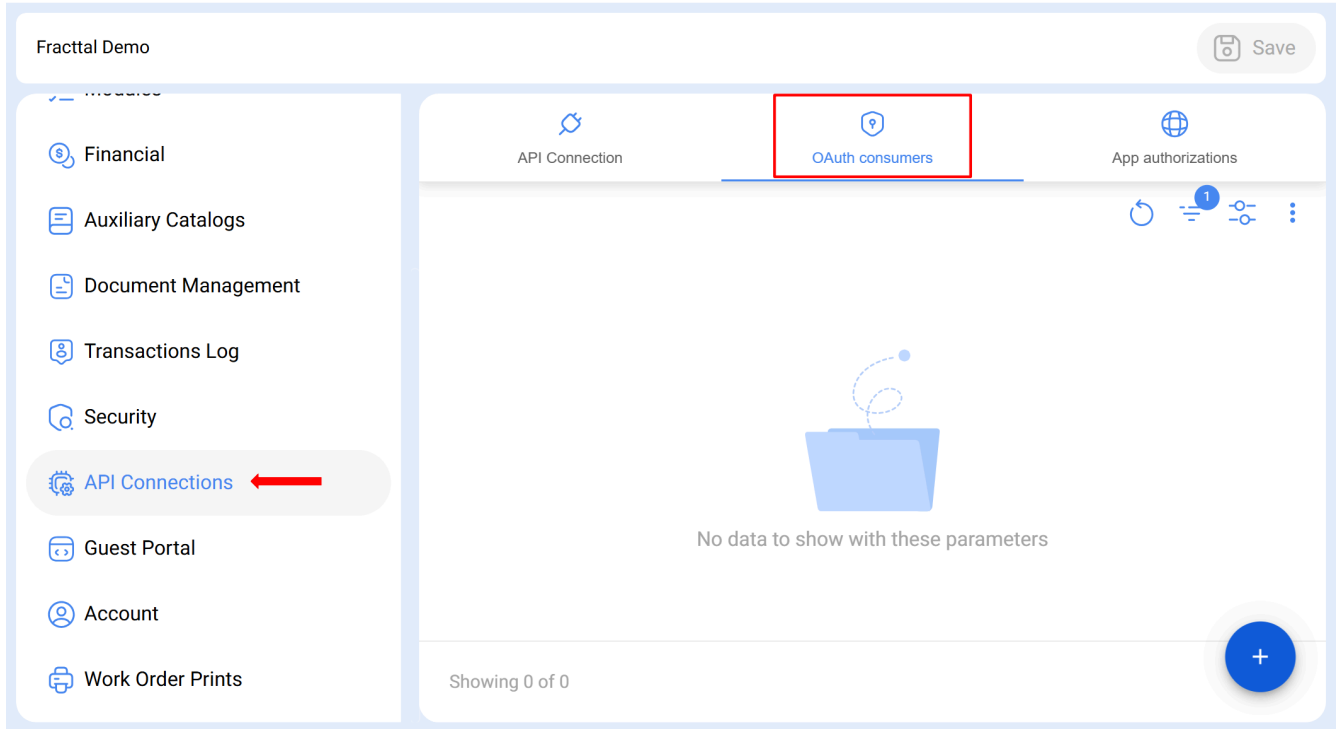
**User menu › Settings**

---

### 2. Go to API Connections

---

In the settings side menu, locate and select **API Connections**. Then click on the **OAuth Consumers** tab.



**Settings > API Connections > OAuth Consumers**

**3. Create a new OAuth consumer**

Click the (+) button to add a new consumer.

Fractal Demo Save

Financial  
Auxiliary Catalogs  
Document Management  
Transactions Log  
Security  
**API Connections**  
Guest Portal  
Account  
Work Order Prints

API Connection OAuth consumers App authorizations

No data to show with these parameters

Showing 0 of 0

**+**

Fill out the form with the following information:

Settings

Fractal Demo

Financial  
Auxiliary Catalogs  
Document Management  
Transactions Log  
Security  
**API Connections**  
Guest Portal  
Account  
Work Order Prints

API Connection

Showing 1 of 1

New OAuth consumer

Name  
CLAUDE

Description  
SERVIDOR MCP

Callback URL  
https://claude.ai/api/mcp/auth\_callback

URL

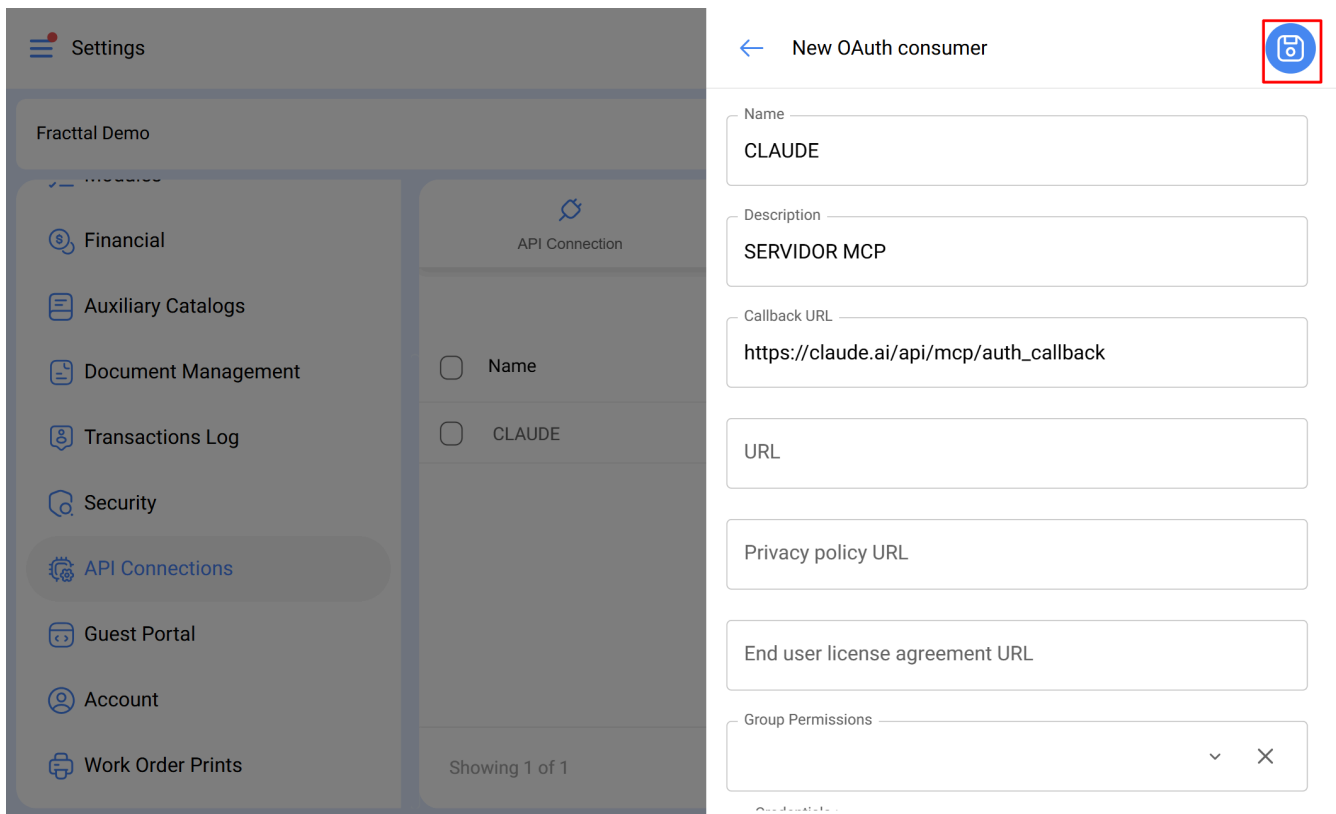
Privacy policy URL

End user license agreement URL

Group Permissions

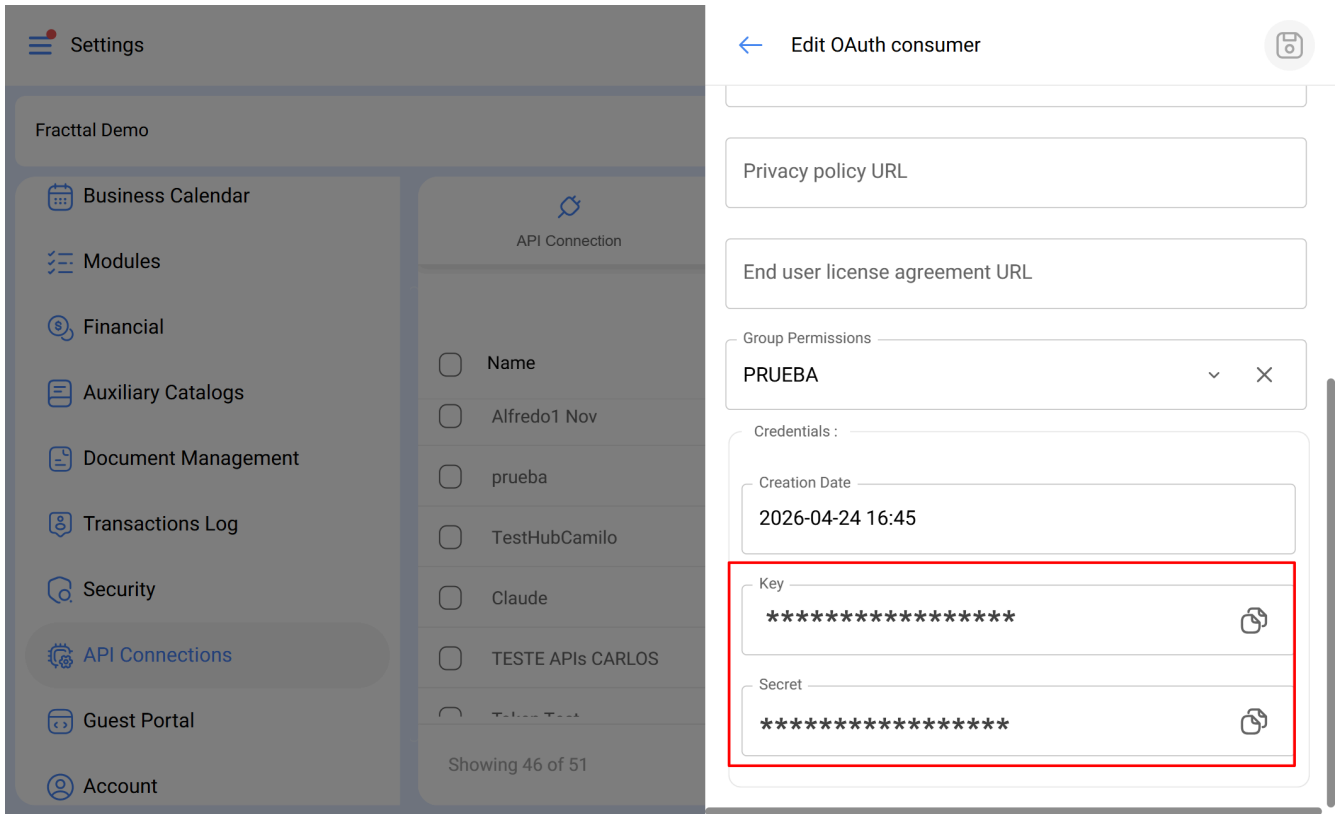
Field	Value
<b>Authorization type</b>	Authorization code
<b>Name</b>	Connection name of your choice
<b>URL</b>	https://claude.ai/api/mcp/auth_callback
<b>Permission group</b>	Select the permission group you want. <b>However, the system will use the permissions of the authenticated user.</b>

Once the form is complete, click the **Save** icon at the top right.



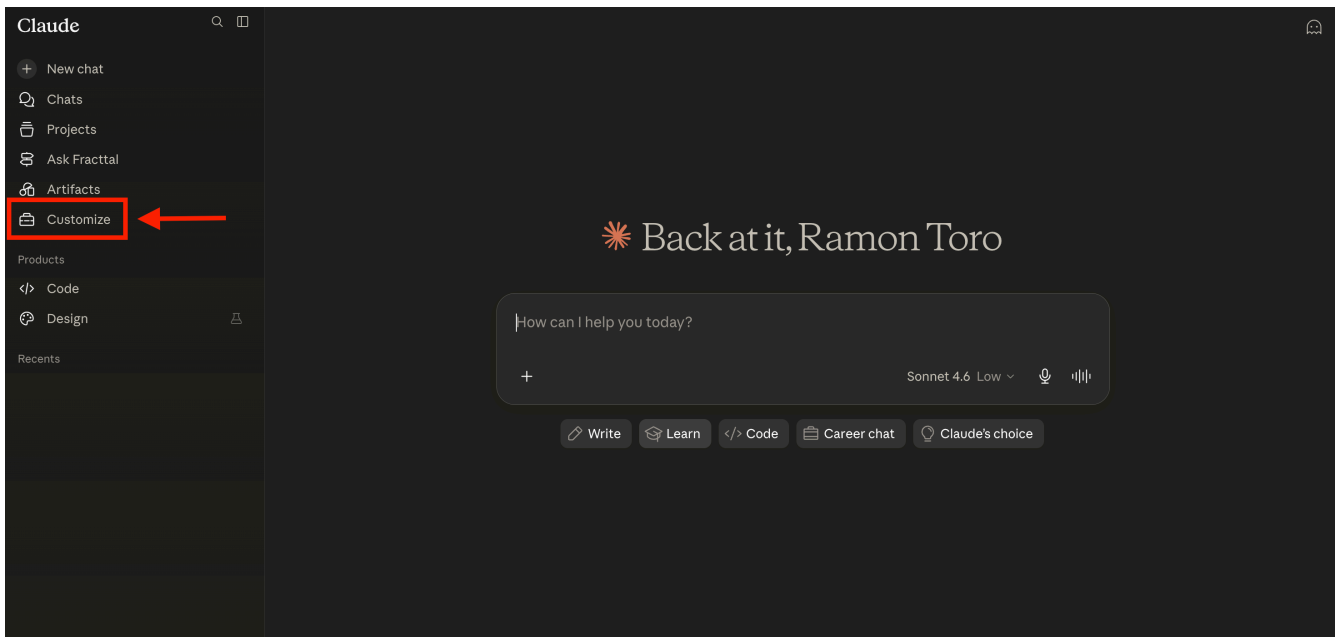
#### 4. Copy the generated key and secret

Upon saving, Fractal One will automatically generate a **Key** and a **Secret** for the consumer. Copy and securely save both values — you will need them in the next step.

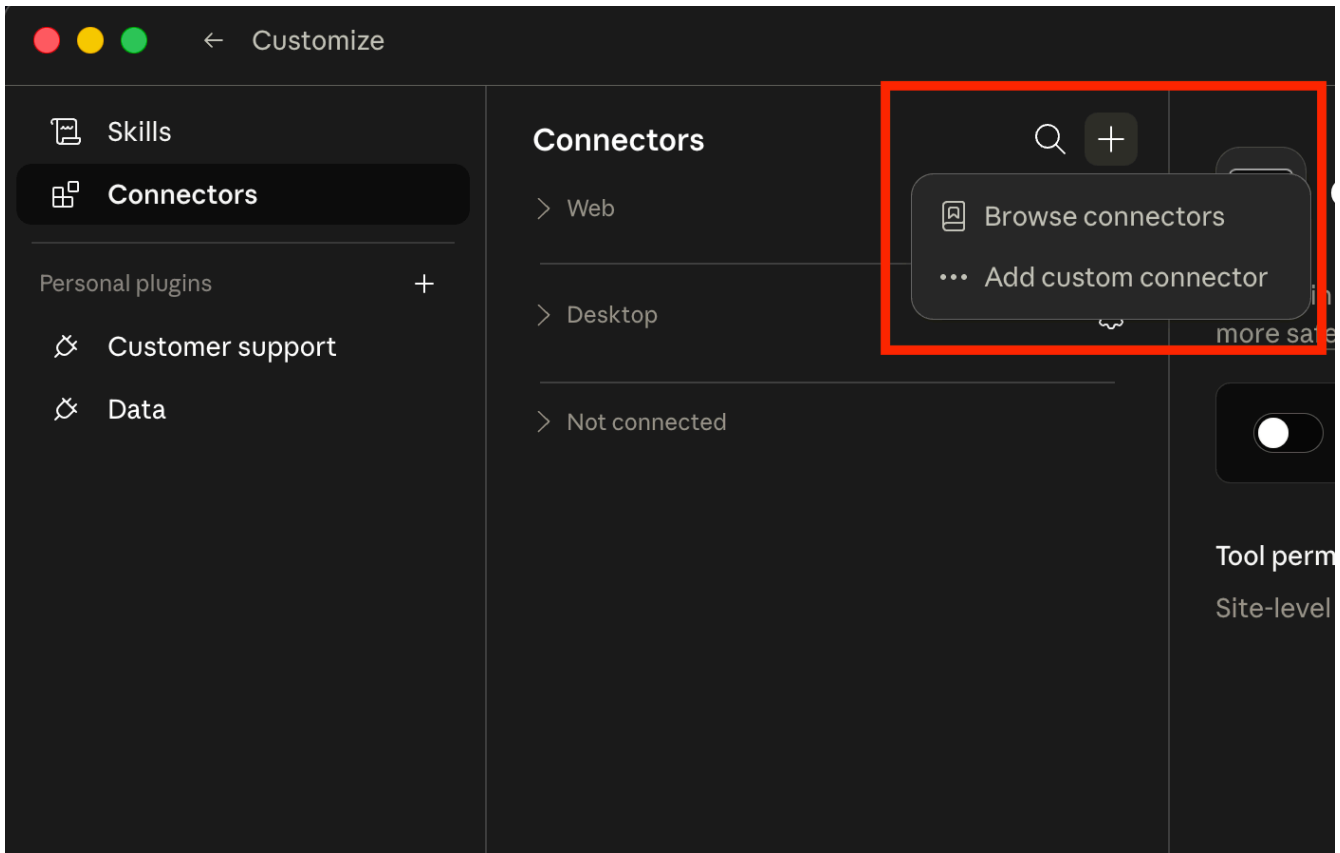
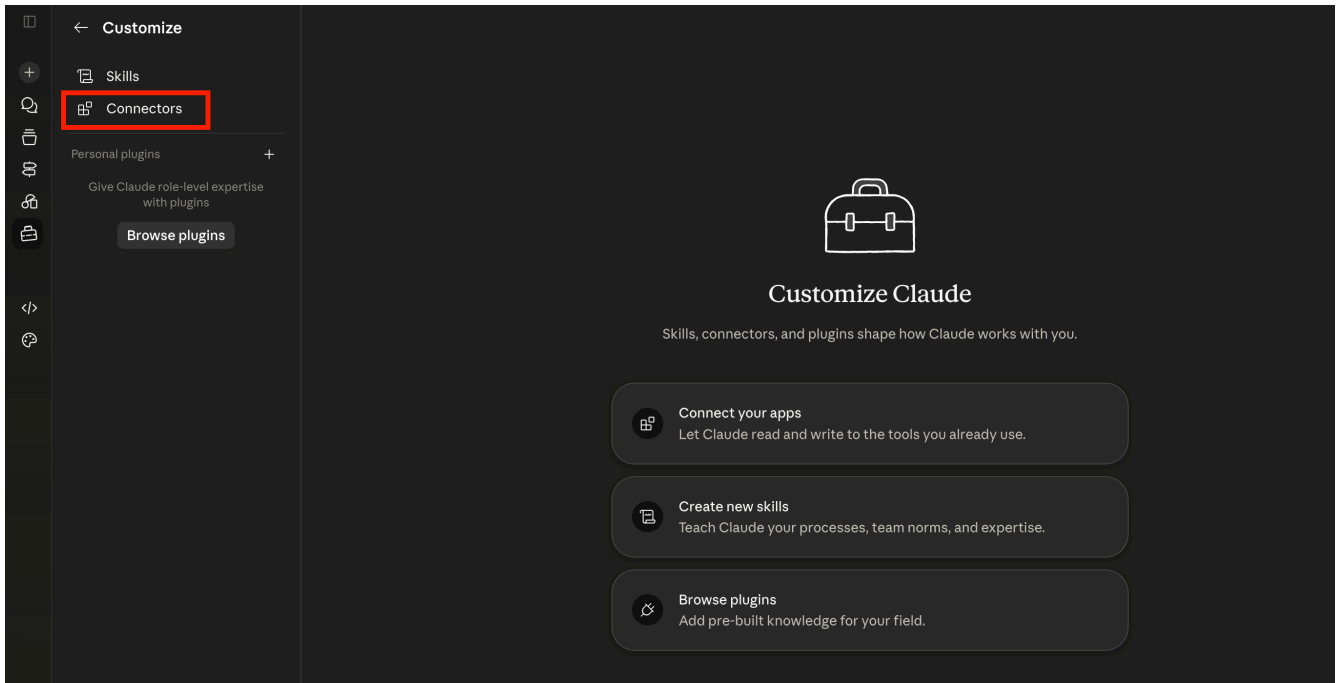


## 5. Add the connector in Claude

Access [claude.ai](https://claude.ai). In the sidebar, click **Customize**.



Then navigate to the **Connectors** section and click **Add custom connector**.



## Add custom connector BETA



Connect Claude to your data and tools. [Learn more about connectors](#) or get started with [pre-built ones](#).

### ^ Advanced settings

Only use connectors from developers you trust. Anthropic does not control which tools developers make available and cannot verify that they will work as intended or that they won't change.

Building an MCP server? [Report issues and subscribe to updates here](#)

Cancel

Add

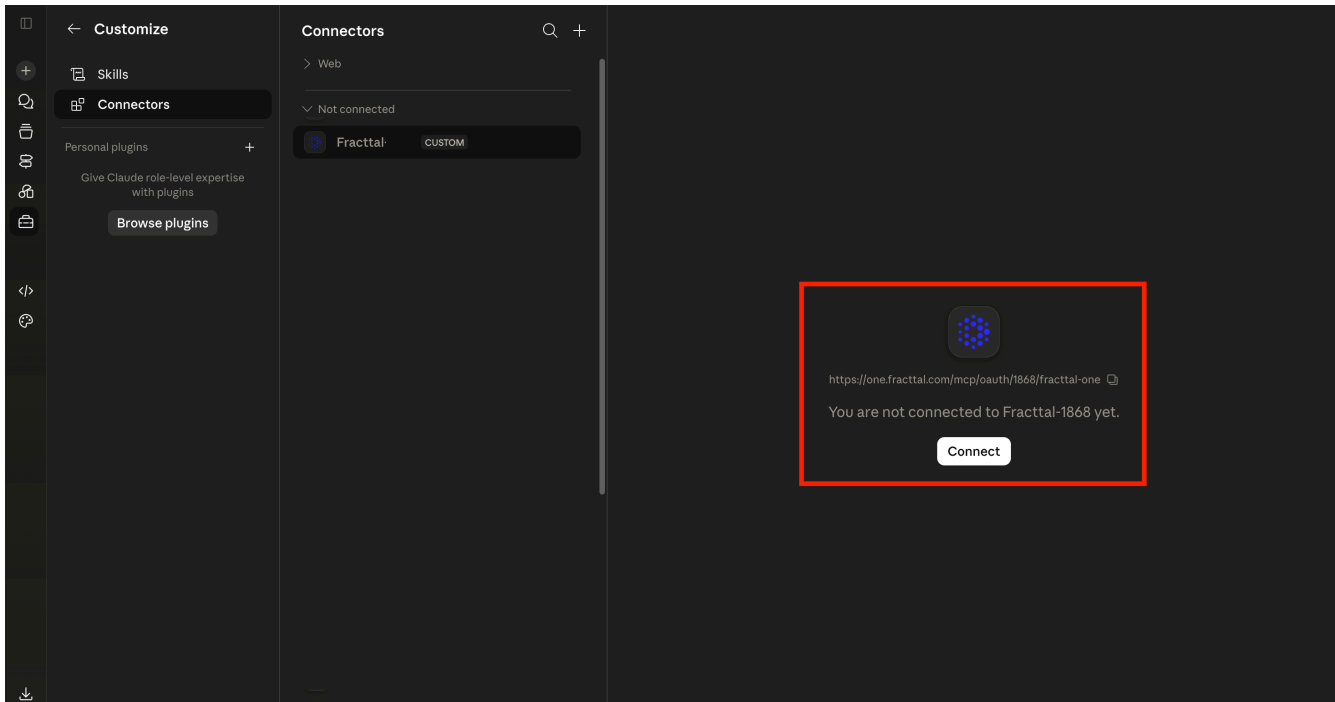
Fill out the form with the following information:

Field	Value
<b>Connector name</b>	Fractal One (or the name you prefer)
<b>MCP server URL</b>	<code>https://one.fractal.com/mcp/oauth/fractal-one</code>
<b>Key (Client ID)</b>	Paste the key generated in step 4
<b>Secret (Client Secret)</b>	Paste the secret generated in step 4

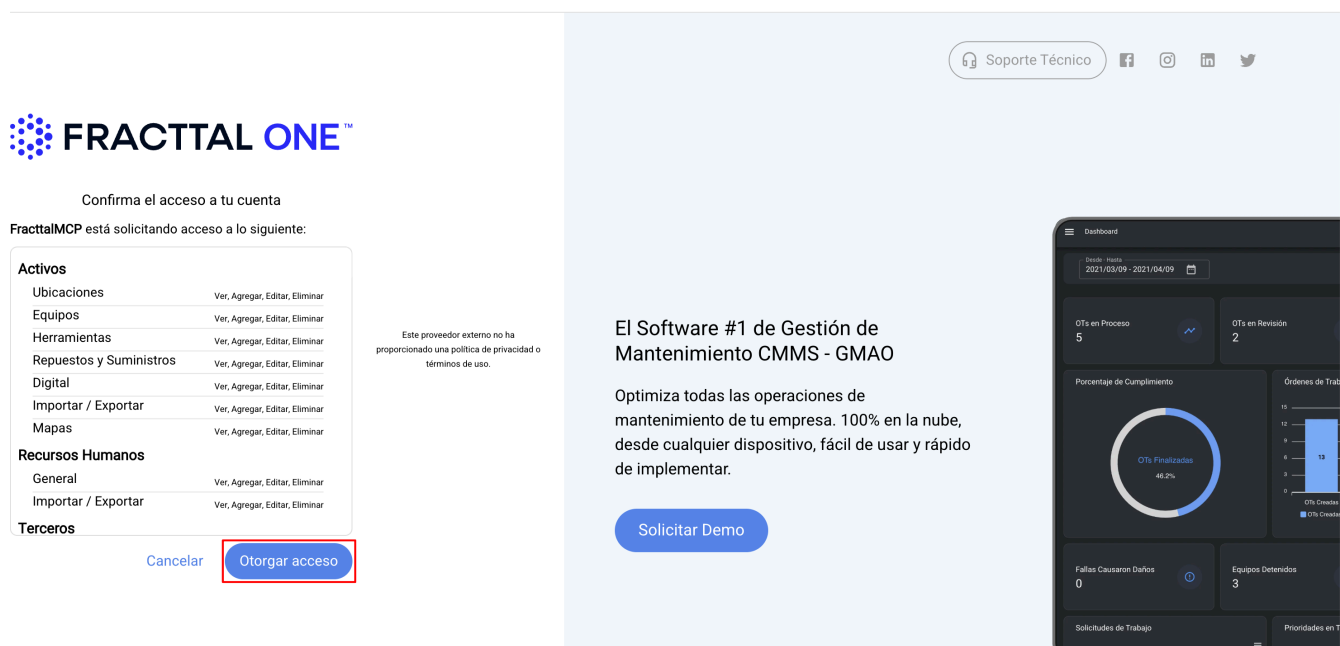
## 6. Authorize the connection

Click **Add**.

Claude will show a button to **Connect with Fractal One**. Clicking it will open a Fractal authorization window where you must log in and confirm access permissions.



Once approved, the connector will be active and you will see its status as **Connected**.



**Done!** You now have Fractal One connected to Claude.

**Important Considerations:**

- Using this integration may involve consumption, limits, or charges associated with third-party services outside of Fractal. Such costs and conditions will be determined solely by each external provider.
- The user is responsible for validating and monitoring actions, automations, and results generated through third-party platforms connected to Fractal, including those derived from instructions, configurations, prompts, or flows defined on those platforms.