

How to link multiple assets to the same out-of-service event?

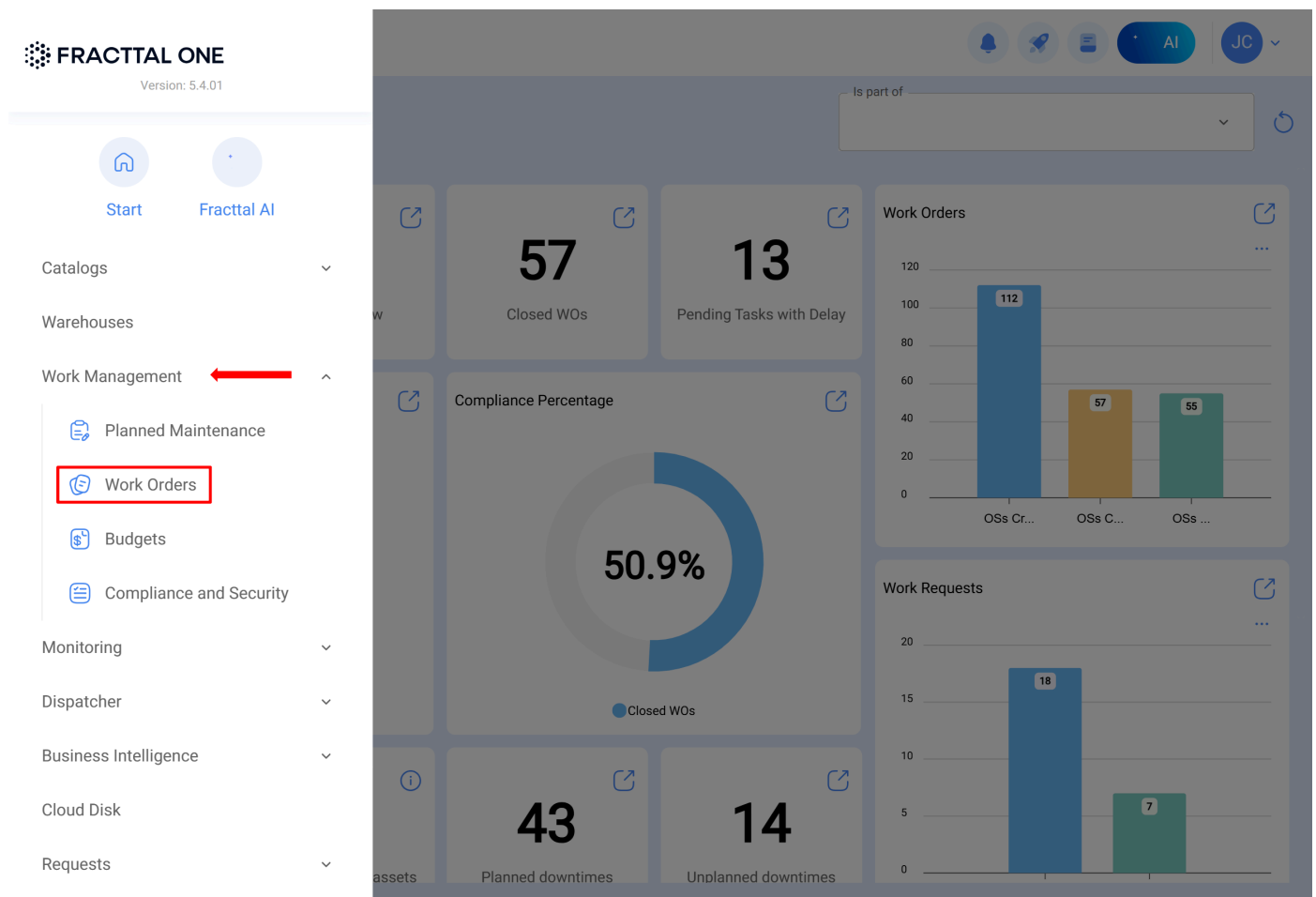
help.fracttal.com/hc/en-us/articles/37566127141261-How-to-link-multiple-assets-to-the-same-out-of-service-event

When an asset experiences a failure that affects the operation of other connected equipment in its structure, it is possible to associate those assets with the same out-of-service event. This feature allows for more accurate traceability by ensuring that all impacted elements reflect the same operational status in their histories.

Below is a step-by-step guide on how to associate related assets during the failure registration process:

1. Create an unplanned work order

Go to the **Tasks > Work Orders** module.



Click on **Create unplanned task**.

The Kanban board is organized into three columns: Pending Tasks (201 items), WOs in Process (2841 items), and WOs in Review (247 items). Each card represents a work order with the following details:

- Pending Tasks:**
 - Card 1: Asset: { 30815 } Prensa n° 30815, Task: 30815-5 Temperatura aceite tanque hidraulico, 00:10, 2025-07-17, EVERY 30 DAY(S).
 - Card 2: Asset: { 30815 } Prensa n° 30815, Task: 30815-9 Revision anual según hoja tecnica, 00:10, 2026-06-17, EVERY 365 DAY(S).
 - Card 3: Asset: { 30815 } Prensa n° 30815.
- WOs in Process:**
 - Card 1: OT1084MTO, Created by Alexander Fuentes, Asset: { 30815 } Prensa n° 30815, Work Management: 3, 00:30, 2025-06-24, 0%, AF Alexander Fuentes.
 - Card 2: OT1081MTO, Created by Ricardo Rangel, Asset: { EQ-CR-001 } CAMIONETA REFRIGERADORA, Task: MTTO M. CAJA REFRIGERADORA, 01:00, 2025-08-16, 0%, JOSE PEREZ.
 - Card 3: OT1080MTO, Created by Alexander Fuentes, Asset: { CAM-END } Camara Endesa.
- WOs in Review:**
 - Card 1: OT1034MTO, Created by Ramon Toro, Asset: { GP-AA-001 } Aire Acondicionado - GE, Task: Correctivo por alta temperatura en área, 00:10, 2025-05-26, 100%, DJ Dionasio Jr.
 - Card 2: OT1027MTO, Created by DIEGO VERGARA, Asset: { MC03.EJ.TAM } MINICARGADOR CAT, Task: LAVAR EQUIPO, 00:10, 2025-05-22, 100%, AR ANDRES RIVEROS.
 - Card 3: OT1026MTO, Created by DIEGO VERGARA, Asset: [redacted], Work Management: [redacted]. A red arrow points to a blue circle with a white plus sign in the bottom right corner of this card.

Select the main asset affected by the failure.

1 Asset 2 Task 3 Sub Tasks 4 Resources

Asset

Asset can't be blank

Incident date
2025-06-24 10:47

Requested By
Jonas Campos

Has the asset failed?

Next >

Fill in the required task details (task type, execution date, description, etc.).

1 Asset 2 Task 3 Sub Tasks 4 Resources

Asset { P-P-001 } v x

Incident date: 2025-06-24 10:54 Requested By: Jonas Campos

Has the asset failed?

Fault Type: movimiento de motor v x Fault Cause: Condiciones de filtro v x Fault Detection Method: v

Fault Severity: - Undefined severity v Type of damage: None v It caused disruption of other assets?: 000:00

Asset out of service

Next >

2. Register the out-of-service event

Within the unplanned task form, enable the **Register out of service** option.

1 Asset 2 Task 3 Sub Tasks 4 Resources

Asset: { P-P-001 }

Incident date: 2025-06-24 10:54 Requested By: Jonas Campos

Has the asset failed?

Fault Type: movimiento de motor Fault Cause: Condiciones de filtro Fault Detection Method: [dropdown]

Fault Severity: - Undefined severity Type of damage: None It caused disruption of other assets?: 000:00

Asset out of service Since when: 2025-06-24 10:55

Does this outage affect other assets?

Next >

Once enabled, a form will appear to record the outage event.

Within that same form, you'll find the option **Link affected assets**.

1 Asset 2 Task 3 Sub Tasks 4 Resources

Asset: { P-P-001 }

Incident date: 2025-06-24 10:54 Requested By: Jonas Campos

Has the asset failed?

Fault Type: movimiento de motor Fault Cause: Condiciones de filtro Fault Detection Method: [dropdown]

Fault Severity: - Undefined severity Type of damage: None It caused disruption of other assets?: 000:00

Asset out of service Since when: 2025-06-24 10:55

Does this outage affect other assets? This asset is related to: Unrelated

Next >

When enabled, a hierarchical view will display all sub-equipment under the main asset.

← Non Scheduled Tasks

1 Asset 2 Task

Asset
 { P-P-001 }

Incident date
 2025-06-24 10:47

Requested By
 Jonas Campos

Has the asset failed?

Fault Type Fault Cause

Fault Severity Type of damage
 - Undefined severity None

Asset out of service

Since when
 2025-06-24 10:48

Does this outage affect other assets?

This asset is related to
 Unrelated

Next >

- ← 🔍
- { EQ-CR-001 } CAMIONETA REFRIGERADORA
 Type: Equipment
 Code: EQ-CR-001
 Priority:
 Location: // DEMO/ CORPORATIVO/ PLANTA GUAD,
- { EQ-HO-001 } HORNO DE GALLETAS
 Type: Equipment
 Code: EQ-HO-001
 Priority:
 Location: // DEMO/ CORPORATIVO/ PLANTA GUAD,
- { TEQ-TG-H-001 } TANQUE DE GAS
 Type: Equipment
 Code: TEQ-TG-H-001
 Priority:
 Location: // DEMO/ CORPORATIVO/ PLANTA GUAD,
- Showing 3 of 3

Notes:

- Only assets that belong to the main asset's structure will be displayed.
- Only **Equipment-type** assets that are hierarchically beneath the main asset linked to the unplanned task with failure will be considered.

Select the additional assets also affected by the event. You can select one or multiple assets, depending on the scope of the failure.

1 Asset 2 Task 3 Sub Tasks 4 Resources

Asset: { P-P-001 }

Incident date: 2025-06-24 11:12 Requested By: Jonas Campos

Has the asset failed?

Fault Type: Fault Cause: Fault Detection Method:

Fault Severity: - Undefined severity Type of damage: None It caused disruption of other assets?: 000:00

Asset out of service Since when: 2025-06-24 11:12

Does this outage affect other assets? This asset is related to: 1 Relationship(s)





Next >

Ensure that the linked out-of-service assets are correctly associated, then click **Next**.

3. Finalize the registration

- Complete the remaining details of the unplanned task (tasks, subtasks, and resources).
- Save the unplanned task.

Asset Task Sub Tasks Resources

	Qty	Unit	Description	Type	Unit Cost	Total cost	Resource Source
 	00:01	Hour	Administrativo	Inhouse Personnel	\$ CLP 80,00	\$ CLP 1,33	
 	00:02	Hour	Analista de manutenção	Inhouse Personnel	\$ CLP 100,00	\$ CLP 3,33	

< BackFinish >+

The system will automatically register the out-of-service event for all the selected assets.