

Catalogs menu and how to access it? – Help Center

help.fracttal.com/hc/en-us/articles/25066982214669-Catalogs-menu-and-how-to-access-it

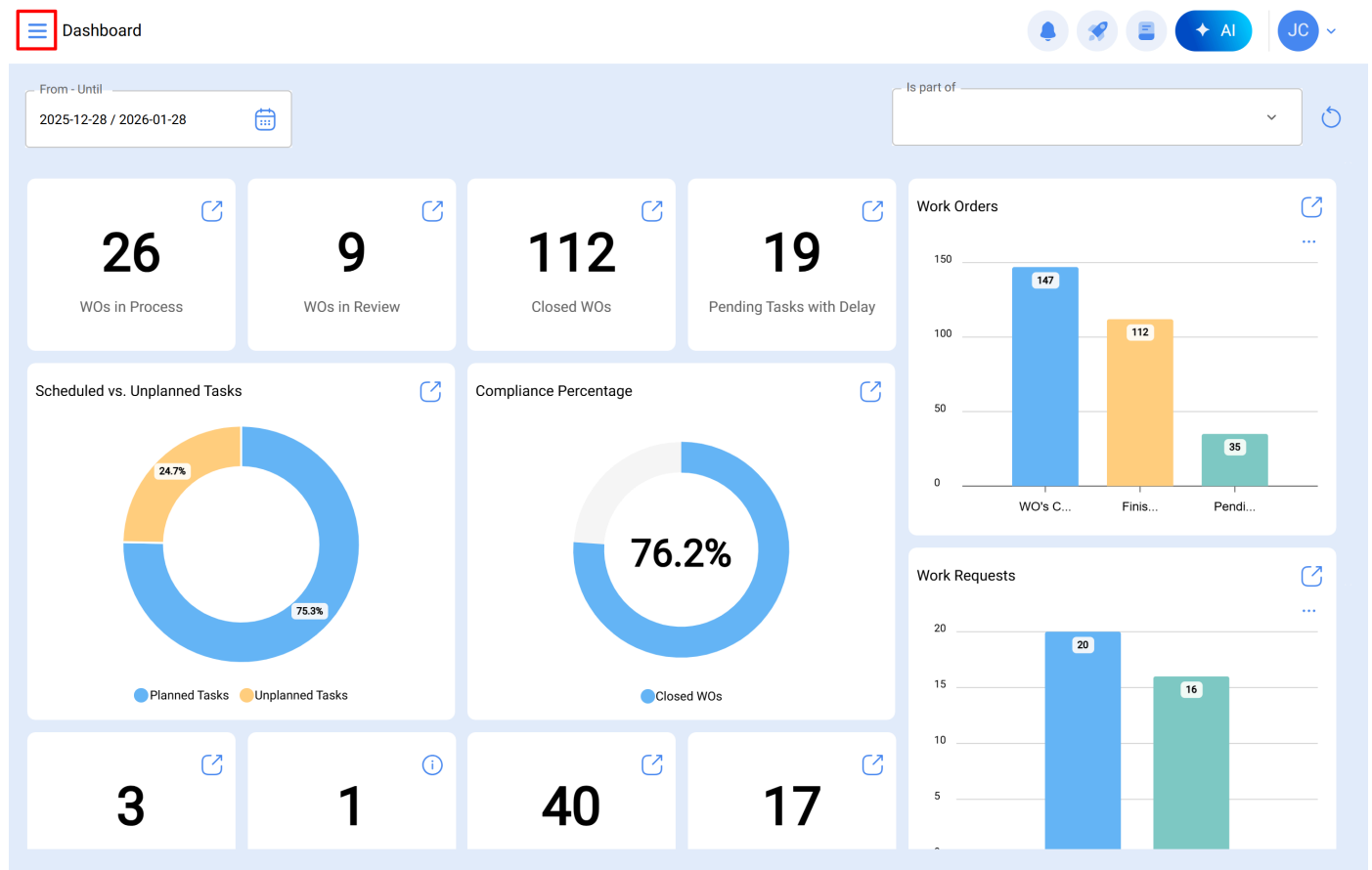
The **Catalogs** module contains the following submodules:

- **Assets:** A module containing all the assets of the platform (Locations, Equipment, Tools, Spare Parts and Supplies, Digital).
- **Inhouse Personnel:** A module that contains all the inhouse staff of the company and that are related to maintenance management.
- **Third Parties:** A module that contains all the third party information related to maintenance management (Service Providers, Manufacturers, Suppliers and Clients).

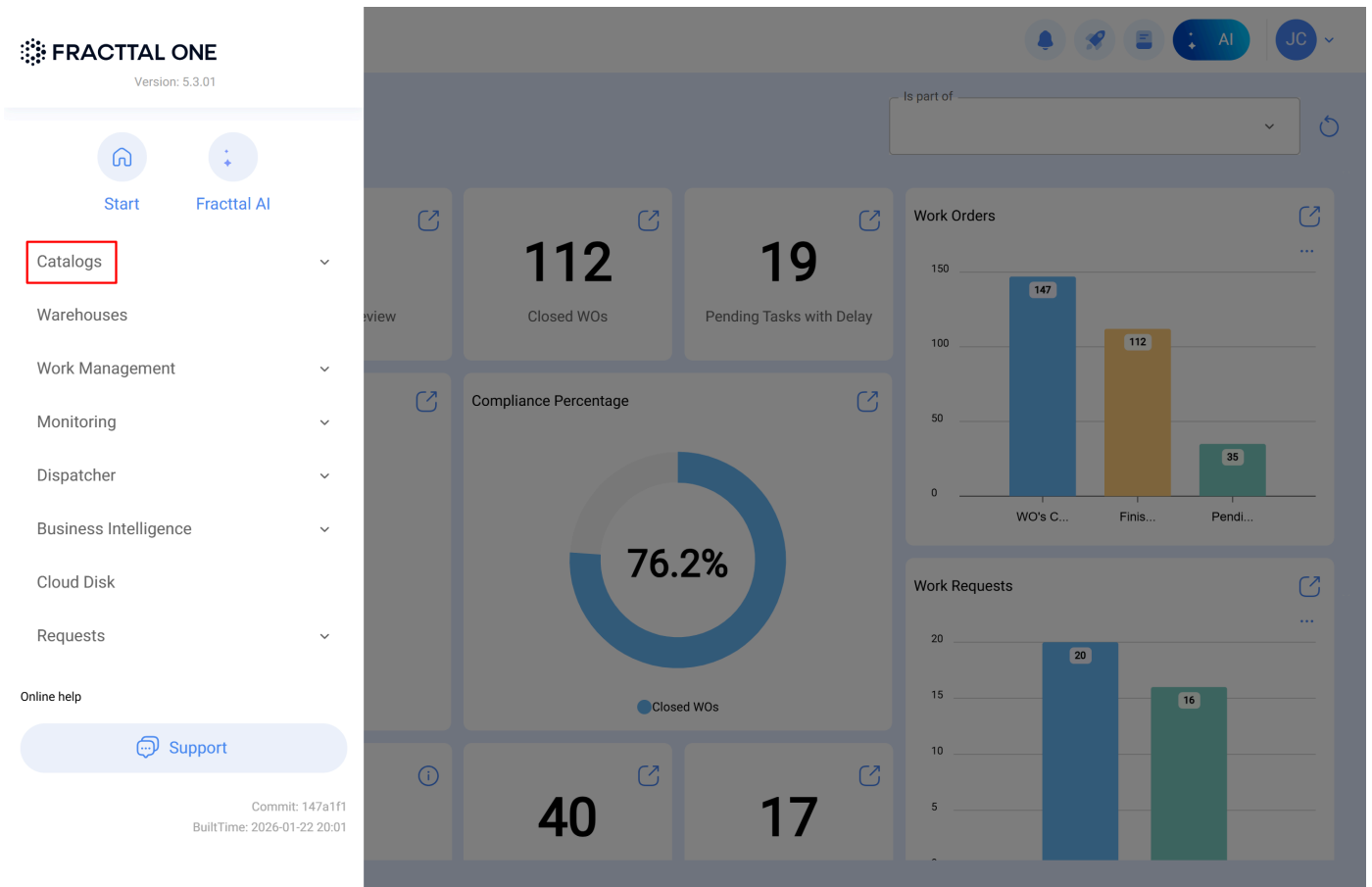
How to enter the Catalogs menu?

To enter the catalogs menu:

1. click on the “main menu” button that you will find in the upper left corner of the main bar.



2. The system displays a side bar with all the available modules and there you will click on "Catalogs".



3. The submodules contained will then appear (Assets, Inhouse Personnel and Third Parties).



Start



Fractal AI

Catalogs

Assets

Inhouse Personnel

Third Parties

Warehouses

Work Management

Monitoring

Dispatcher

Business Intelligence

Cloud Disk

Requests

Online help

