

Fracttal Hub

 help.fracttal.com/hc/en-us/articles/24913914496909-Fracttal-Hub

The Fracttal Hub add-on is an innovative tool integrated into Fracttal One 5.0, with the primary goal of providing seamless integration of various ERP (Enterprise Resource Planning) systems, allowing for efficient bidirectional communication with our platform. Currently, we enable communication with applications such as Google Sheets, HTTP Request, Email, and Databases, in addition to the Fracttal API itself.

Fracttal Hub not only guarantees effective data communication between different software, but also prevents data loss, prioritizing the security of our users. Its essential function is to ensure reliable data transfer, avoiding information gaps and providing a secure and efficient environment for enterprise data management.

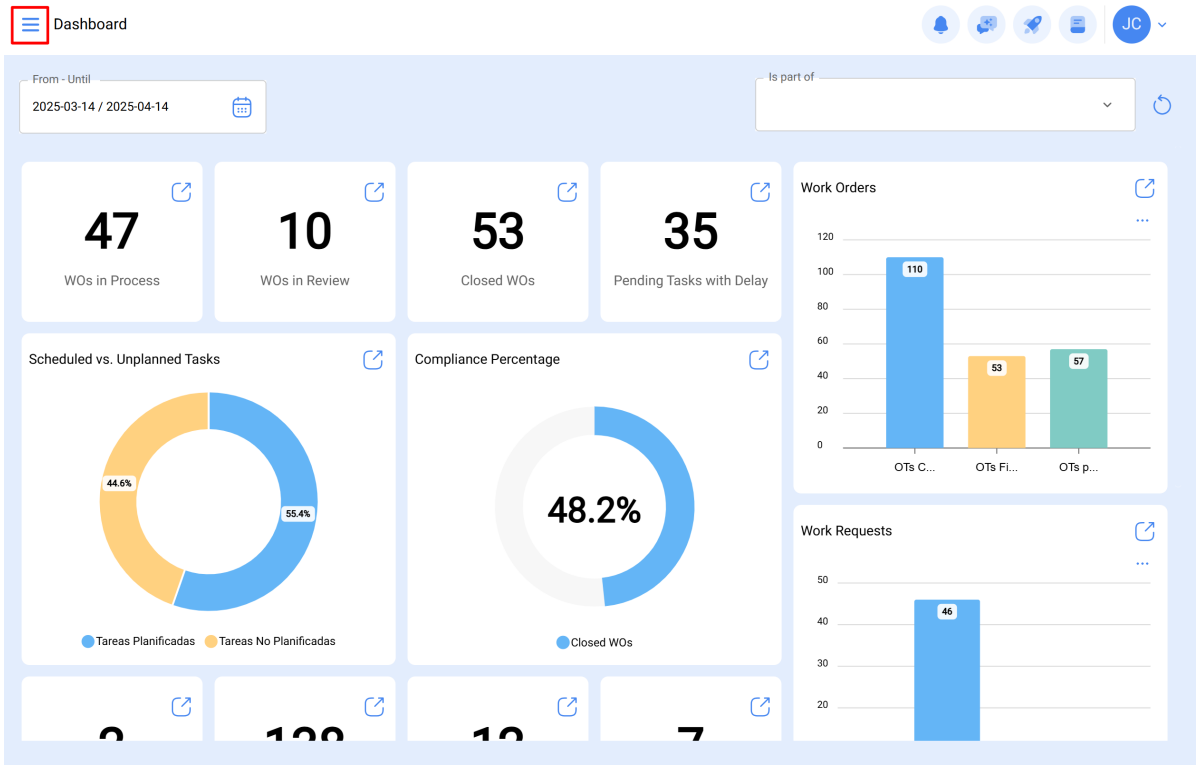
Fracttal Hub is not just an integration tool; it is a catalyst for more effective and secure business management. Its ability to communicate efficiently with various applications, focus on security, and adaptable configuration positions it as an essential tool in the modern business landscape. With Fracttal Hub, businesses can expect a significant improvement in integration, communication, and ultimately, informed decision-making.

How do we access Fracttal Hub?

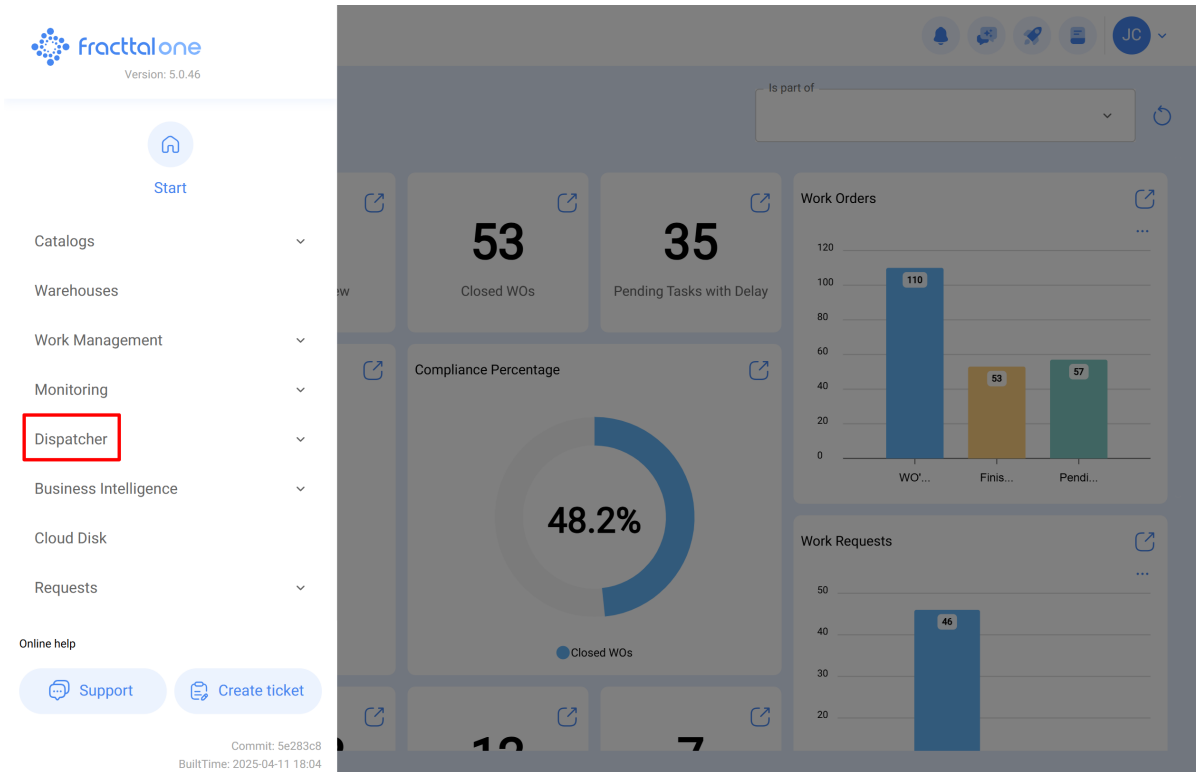
To access Fracttal Hub from Fracttal One 5.0, follow these simple steps:

There you will find our user friendly integration tool..

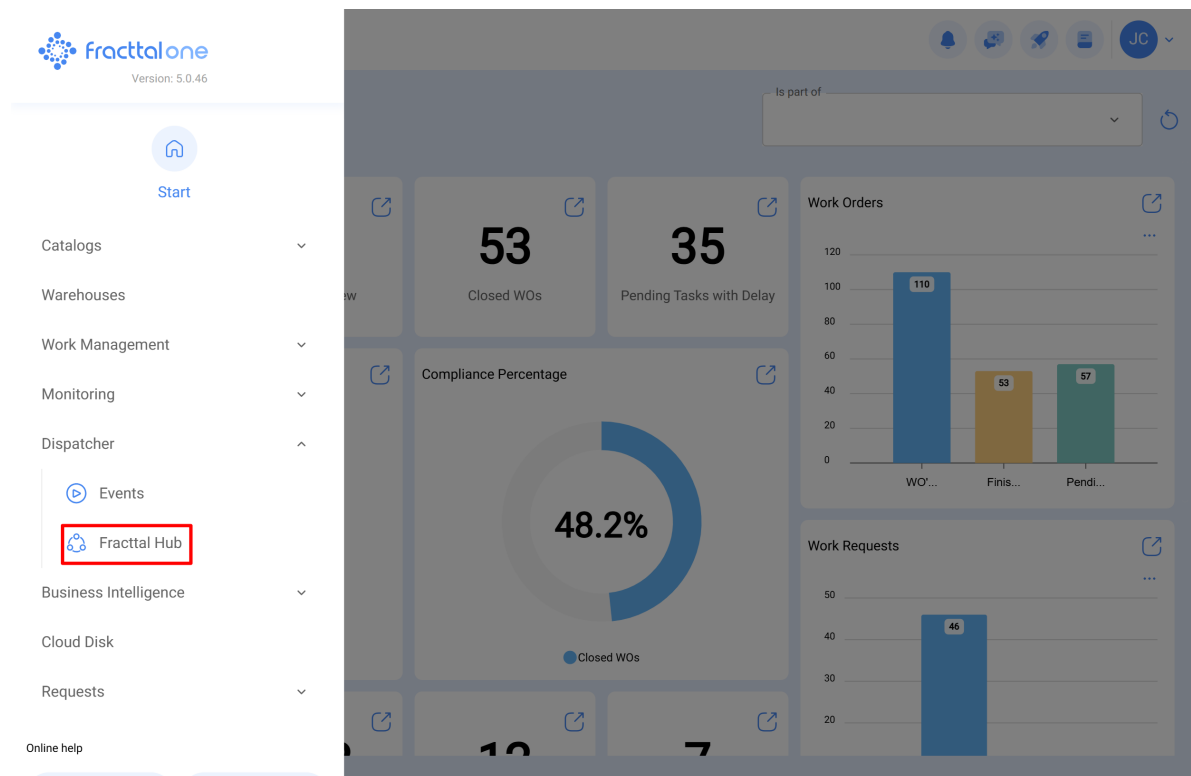
1. Search and click on the main menu.



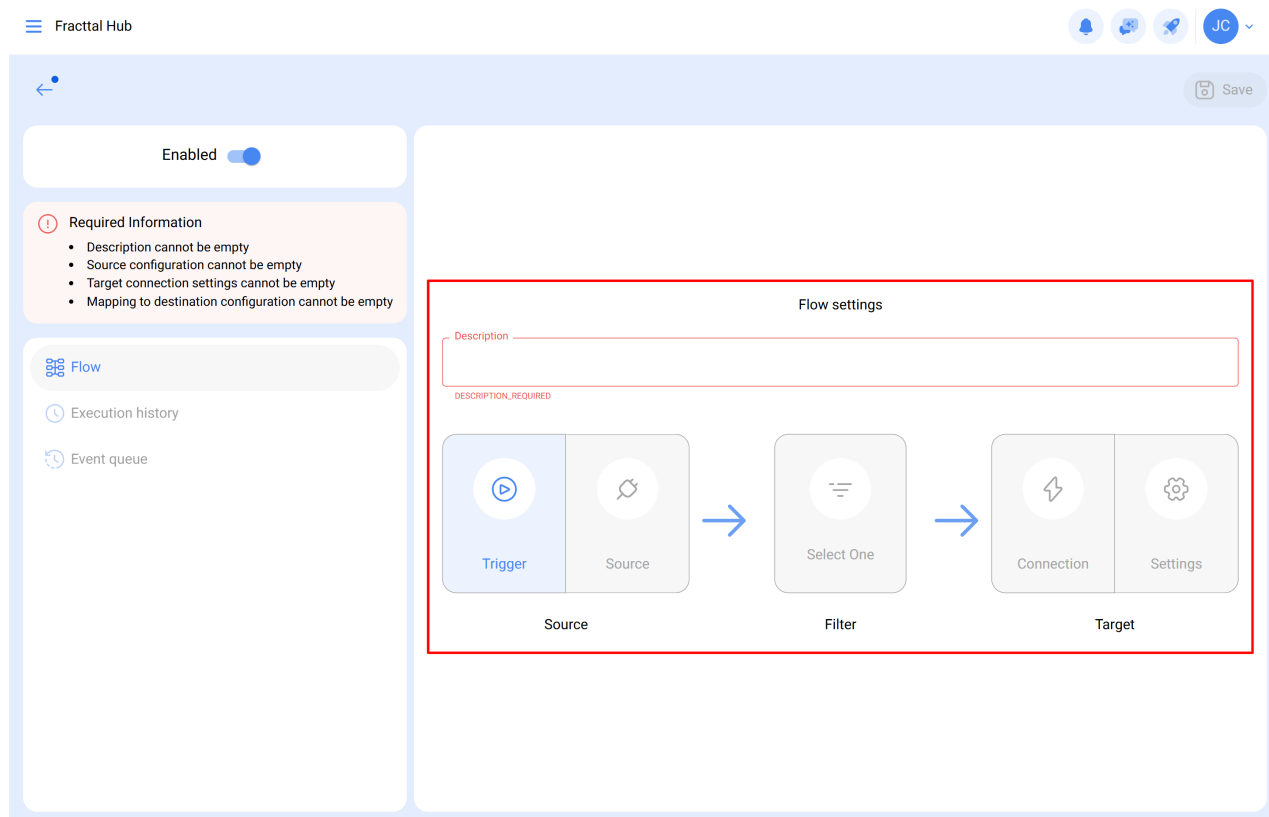
2. Select the "Automator" option.



3. Within the Automator, click on "Fractal Hub".



Here you will find all Fractal Hub functionalities.



Let's take a look at what Fractal Hub brings with it.

Bidirectional and Efficient Communication:

Fracttal Hub enables bidirectional and efficient communication with various applications, such as Google Sheets, HTTP Request, Email, Database, and the Fracttal API itself. This diversity of options provides flexibility and versatility in data management, ensuring complete integration with multiple tools.

Communication Triggers:

The tool has several triggers for communication, including manual type events, scheduled dates, and specific frequencies. This variety allows adapting to different scenarios and business needs, ensuring communication at strategic and predefined times.

Data Communication Guarantee:

Fracttal Hub not only focuses on communication efficiency, but also prioritizes data security. Its essential function lies in ensuring reliable data transfer, preventing information loss and providing a secure and efficient environment for enterprise data management.

Configuration of Fracttal Hub:

Fracttal Hub seamlessly integrates into Fracttal One 5.0, facilitating the smooth integration of various ERP systems. The tool enables efficient bidirectional communication with the platform, focusing on bringing everyone into more effective communication.

Authentication Types and Credential Configuration:

The tool provides authentication options, emphasizing the choice of client credentials for more effective communication. Credential configuration includes creating permissions and groups to identify consumers and control access, ensuring efficient management.

Generation of Keys and Secrets:

Security is a priority, and Fracttal Hub emphasizes key generation for creating tokens that enable secure communication with the API. This approach ensures authenticity and privacy in every interaction.

Management of Permission Groups:

The tool offers the possibility of creating multiple groups according to needs, allowing efficient administration by assigning specific permissions to each consumer. This guarantees controlled access to information and the protection of sensitive data.