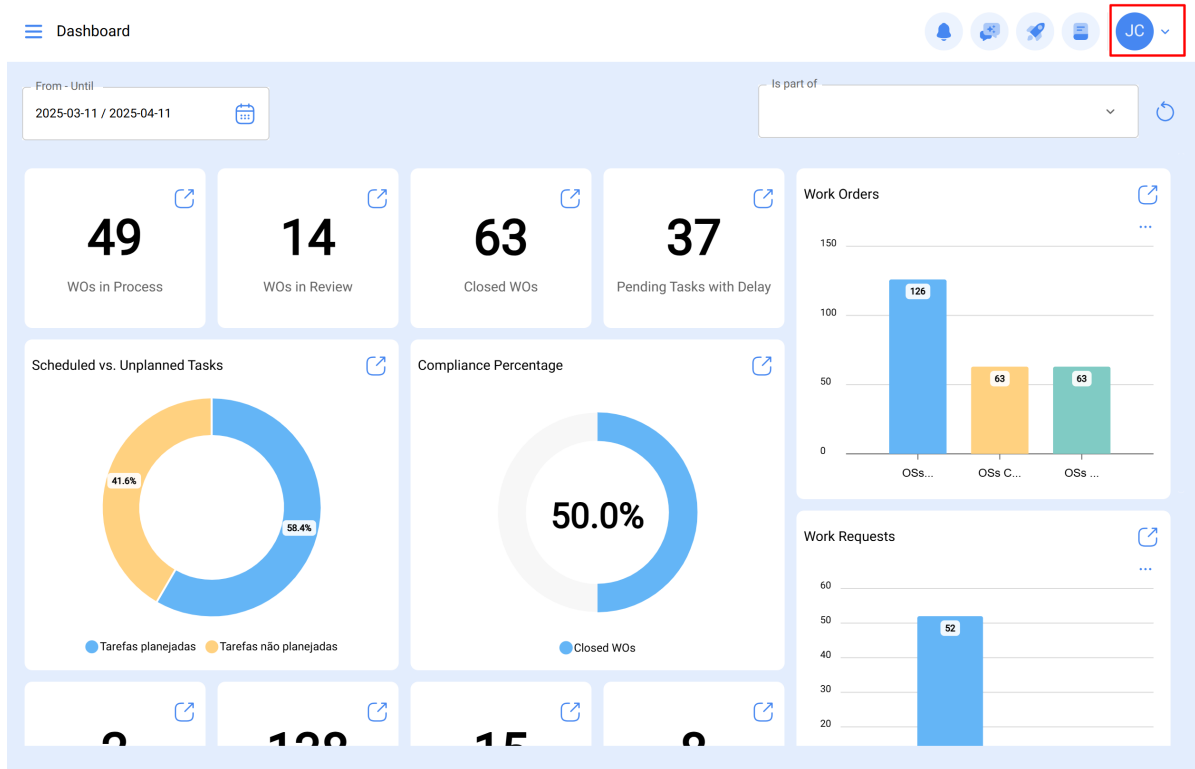


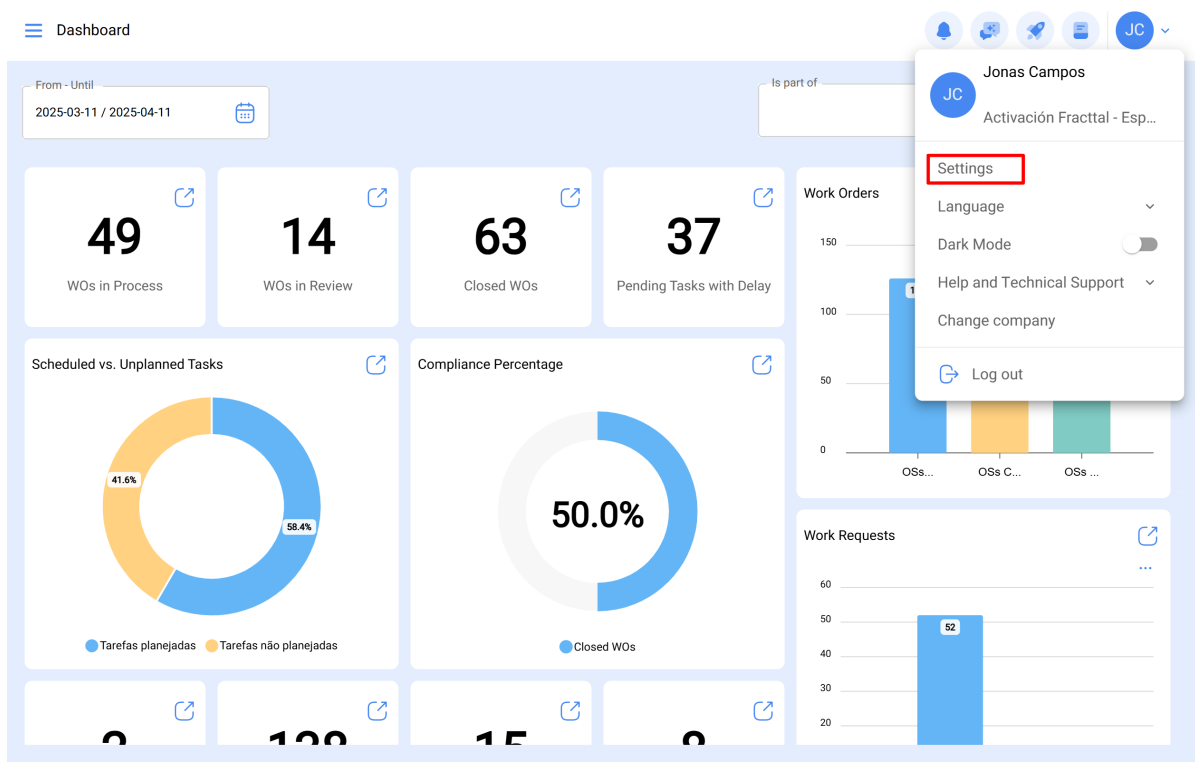
Criar consumidores OAUTH

help.fractal.com/hc/pt-pt/articles/26151637987853-Criar-consumidores-OAUTH

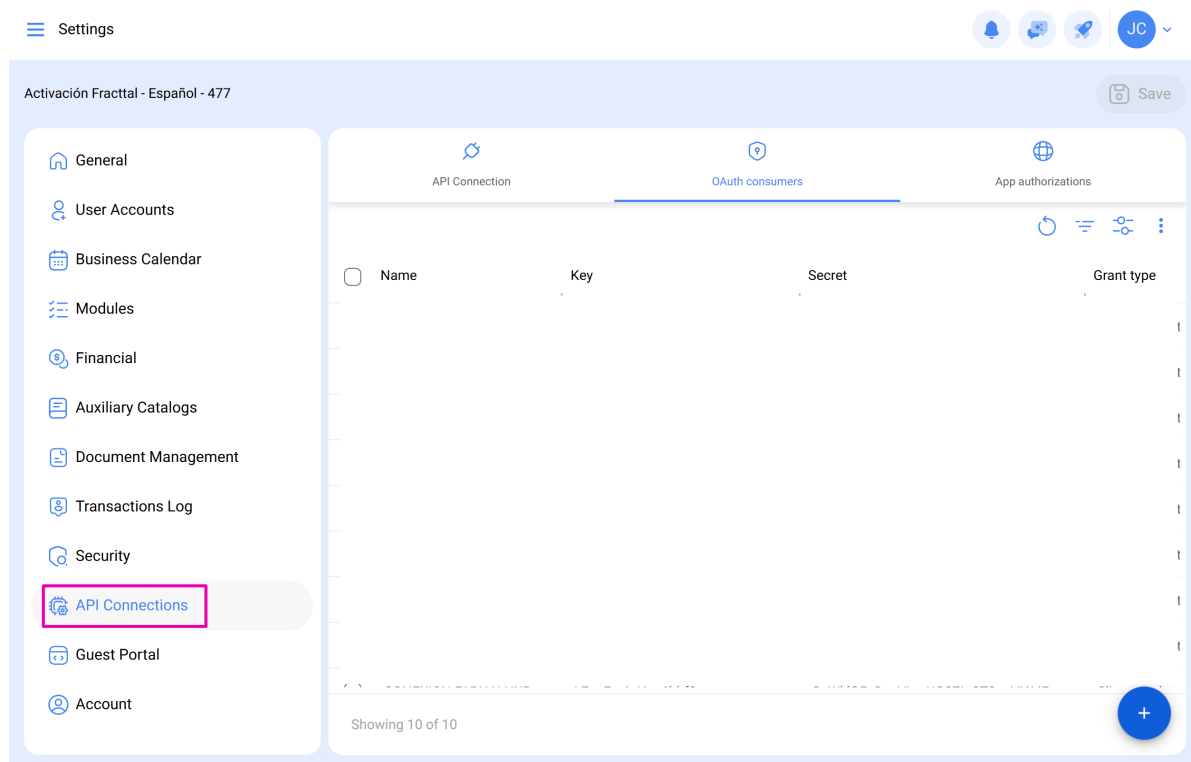
1. Inicie sessão e clique no menu no canto superior direito.



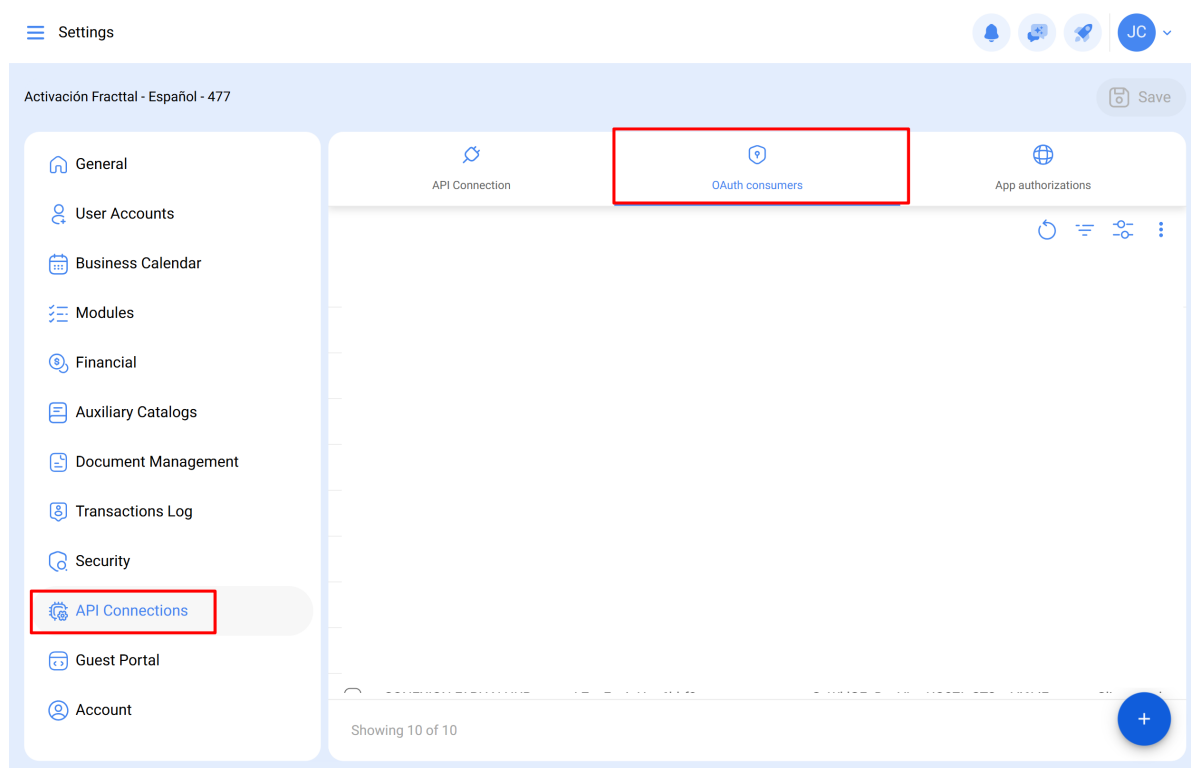
2. Selecionar “Definições” no menu.



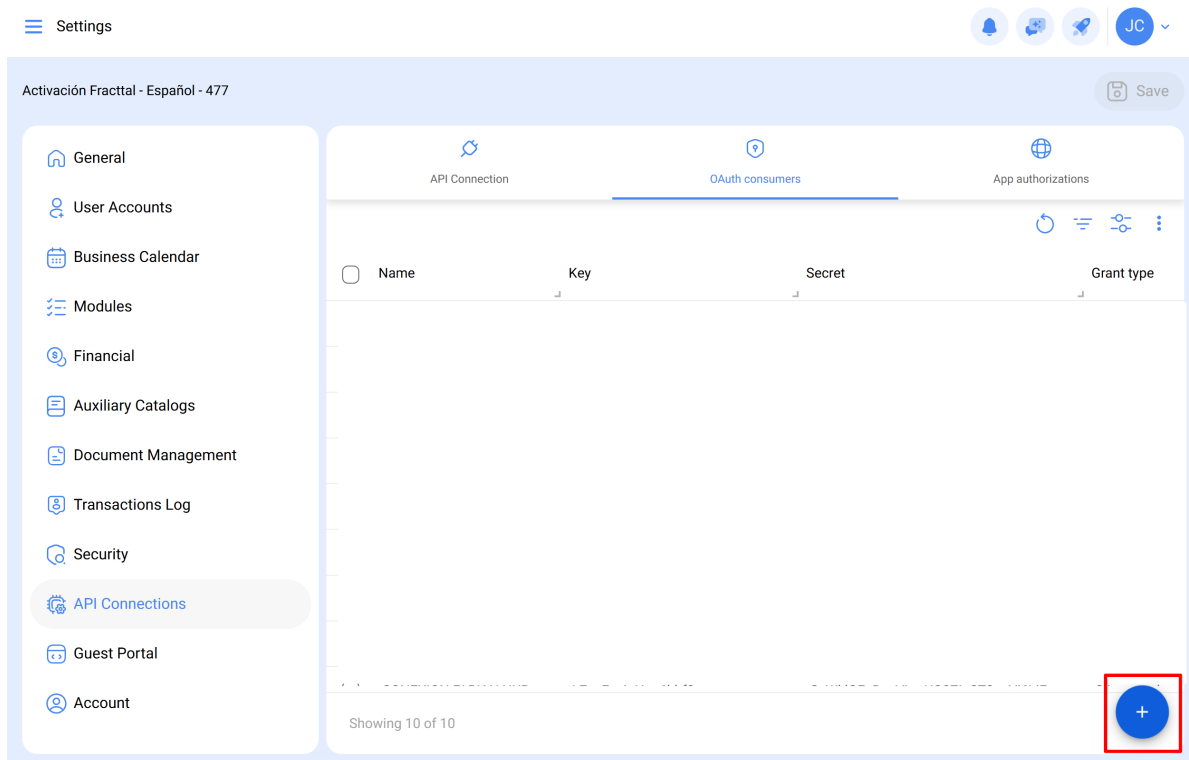
3. Na secção de definições, clique na opção “Ligações API” no painel do lado esquerdo.



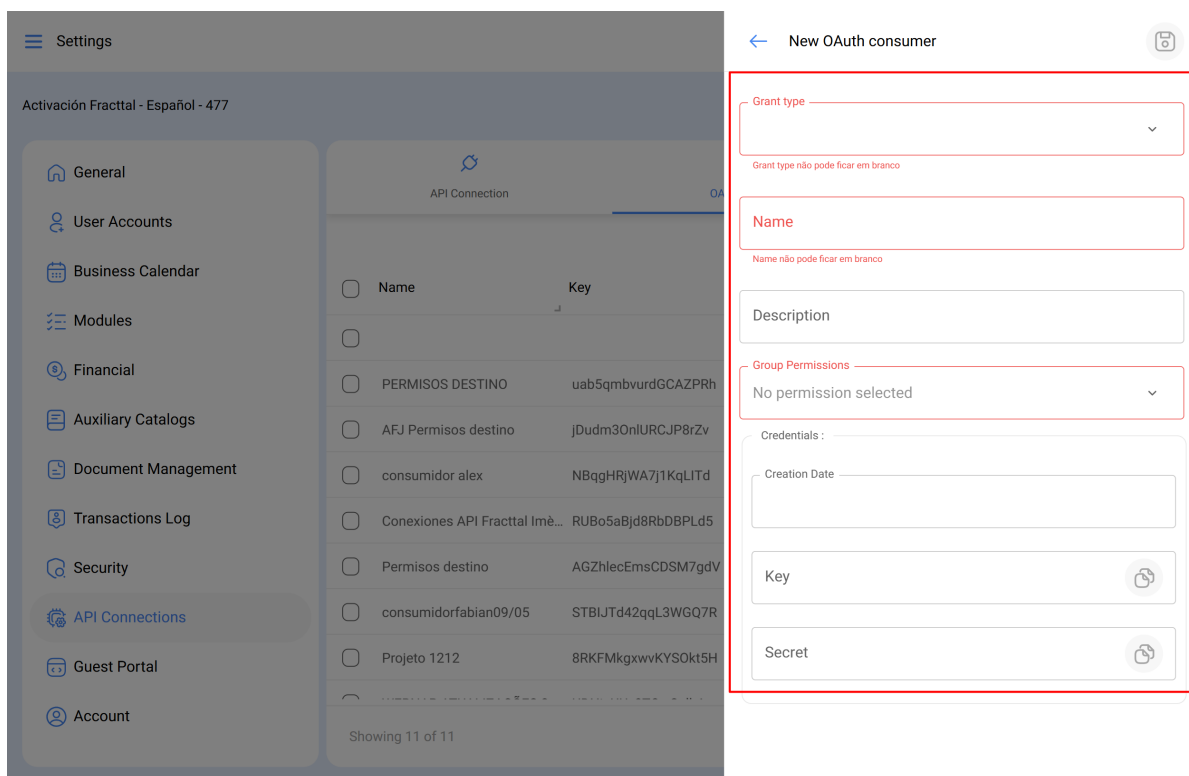
4. Nas definições da API, clique em “Consumidores OAuth”.



5. Clique no botão “+” no canto inferior direito para adicionar um novo consumidor.



6. Configure os campos como mostra a imagem. Aqui, o mais importante são os “**Grupos de permissões**” que criámos anteriormente para que, no momento de estabelecer a comunicação, não tenhamos problemas em aceder ao módulo com o qual pretendemos interagir.



7. Depois de ter configurado os campos acima, clique na opção “Guardar”.

The screenshot shows the 'New OAuth consumer' configuration page. The left sidebar contains the following navigation items: General, User Accounts, Business Calendar, Modules, Financial, Auxiliary Catalogs, Document Management, Transactions Log, Security, API Connections (highlighted), Guest Portal, and Account. The main content area displays a table of API connections with columns for Name and Key. The right sidebar contains the following form fields: Grant type (Client credentials), Name (NAME), Description (Description), Group Permissions (PERMISO 1 TECNICO), Activate Fracttal Hub (Middleware) (unchecked), Credentials (Creation Date, Key, Secret), and a 'Guardar' button (highlighted with a red box).

Name	Key
NAME	
PERMISOS DESTINO	uab5qmbvurdGCAZPRh
AFJ Permisos destino	jDudm3OnLURCJP8rZv
consumidor alex	NBqgHRjWA7j1KqLITd
Conexiones API Fracttal Imè...	RUBo5aBjd8RbDBPLd5
Permisos destino	AGZhleEmsCDSM7gdV
consumidorfabian09/05	STBJTd42qL3WGQ7R
Projeto 1212	8RKFMkgxwvKYS0kt5H