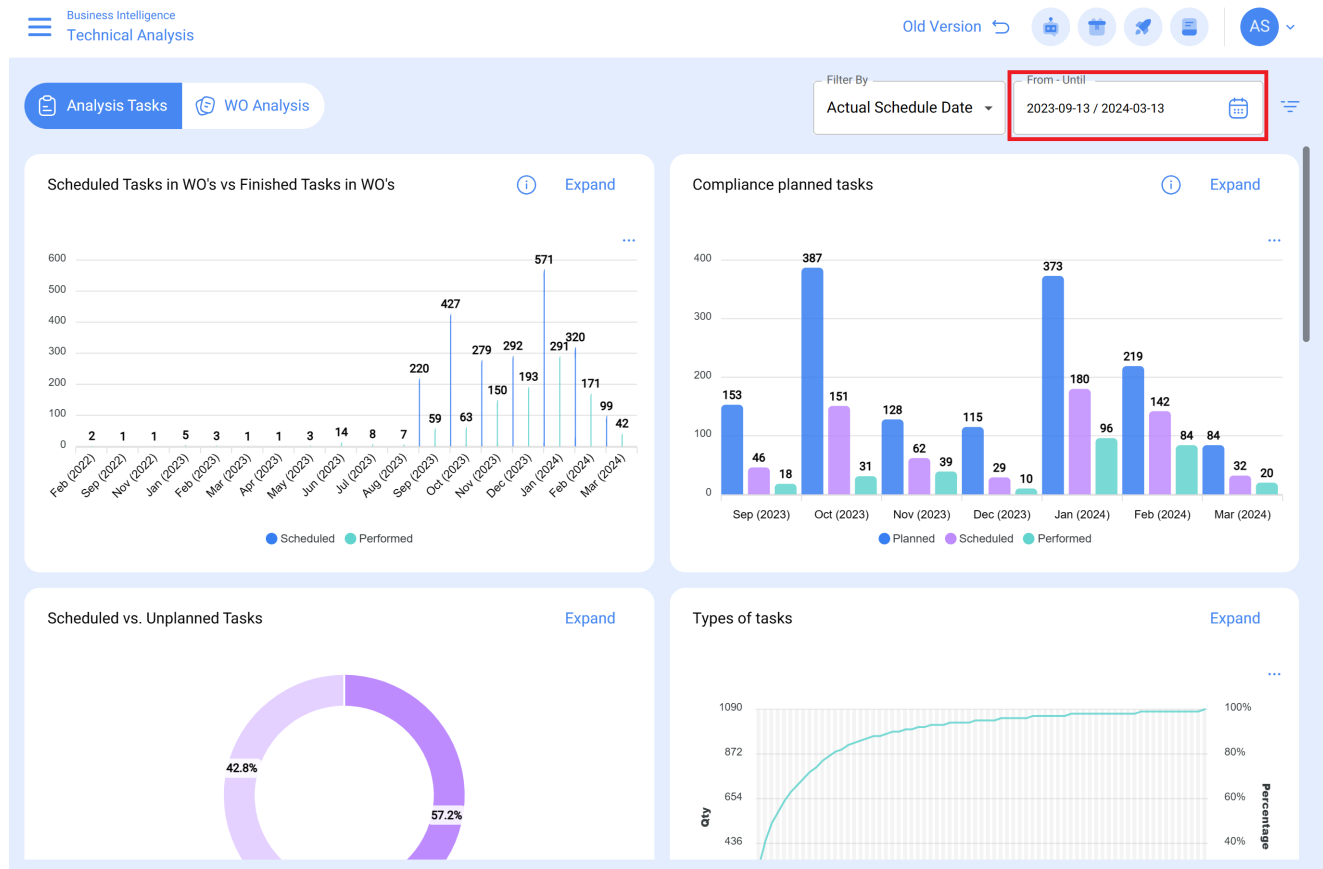


Technical Analysis Filtering options

help.fractal.com/hc/en-us/articles/25022233848589-Technical-Analysis-Filtering-options

In this module you will have two types of filters:

Filter by date range:





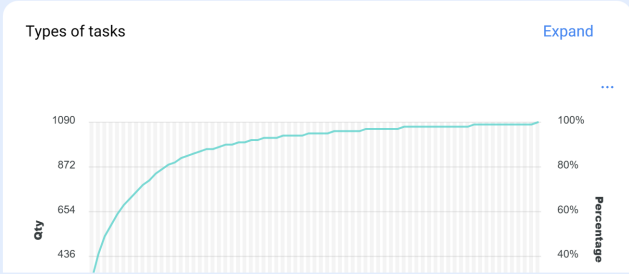
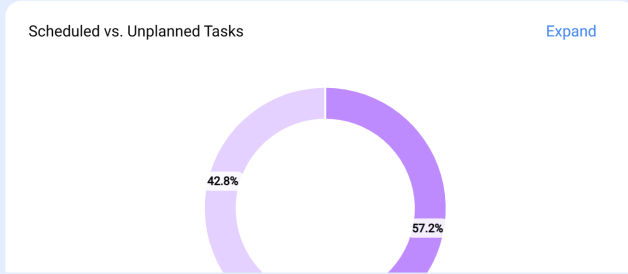
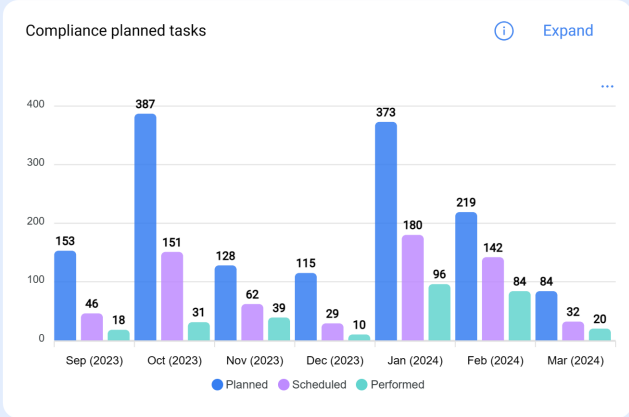
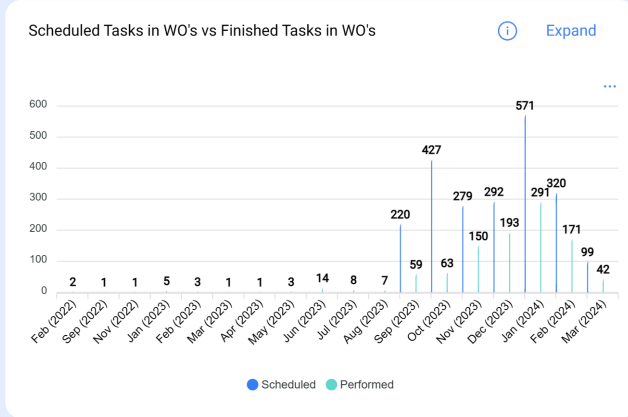
Filter where you will have the following filtering options:

- **Month to Date:** Allows you to view the information for the current month.
- **1 Month:** Allows the display of information for only one month (it is counted backwards from the current day to the month).
- **6 Months:** Allows you to view the information for the last 6 months (counted backwards from the current day to 6 months).
- **Year to Date:** Allows you to view the information for the current year.

Advanced Filters:

Analysis Tasks **WO Analysis**

Filter By: Actual Schedule Date | From - Until: 2023-09-13 / 2024-03-13  



Filter where you can perform more specific searches of parameters associated with the following aspects in the platform:

- **Assets:** Allows searches based on general asset information such as type of asset, location, description, code, etc.
- **Work Management:** Allows advanced searches based on associated task parameters, such as dates, task types, classifications, etc.
- **Work Orders:** Allows advanced searches based on the associated work order parameters, such as WO ID, status, percentage of progress, etc.