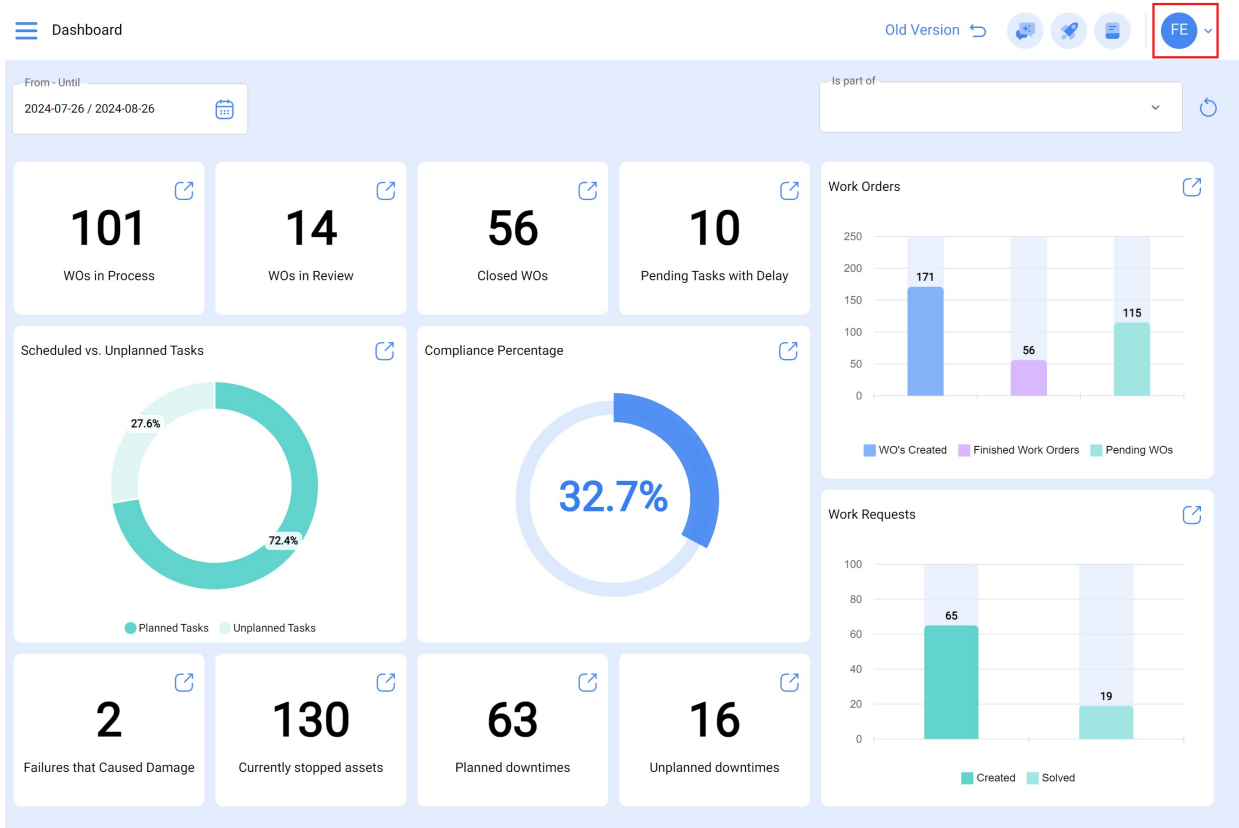


# Fracttal Hub configuration from auxiliary catalogs

[help.fracttal.com/hc/en-us/articles/26151405399053-Fracttal-Hub-configuration-from-auxiliary-catalogs](https://help.fracttal.com/hc/en-us/articles/26151405399053-Fracttal-Hub-configuration-from-auxiliary-catalogs)

1. Log in to Fracttal One and go to the settings menu located in the upper right corner.



2. Click on “Setting”.

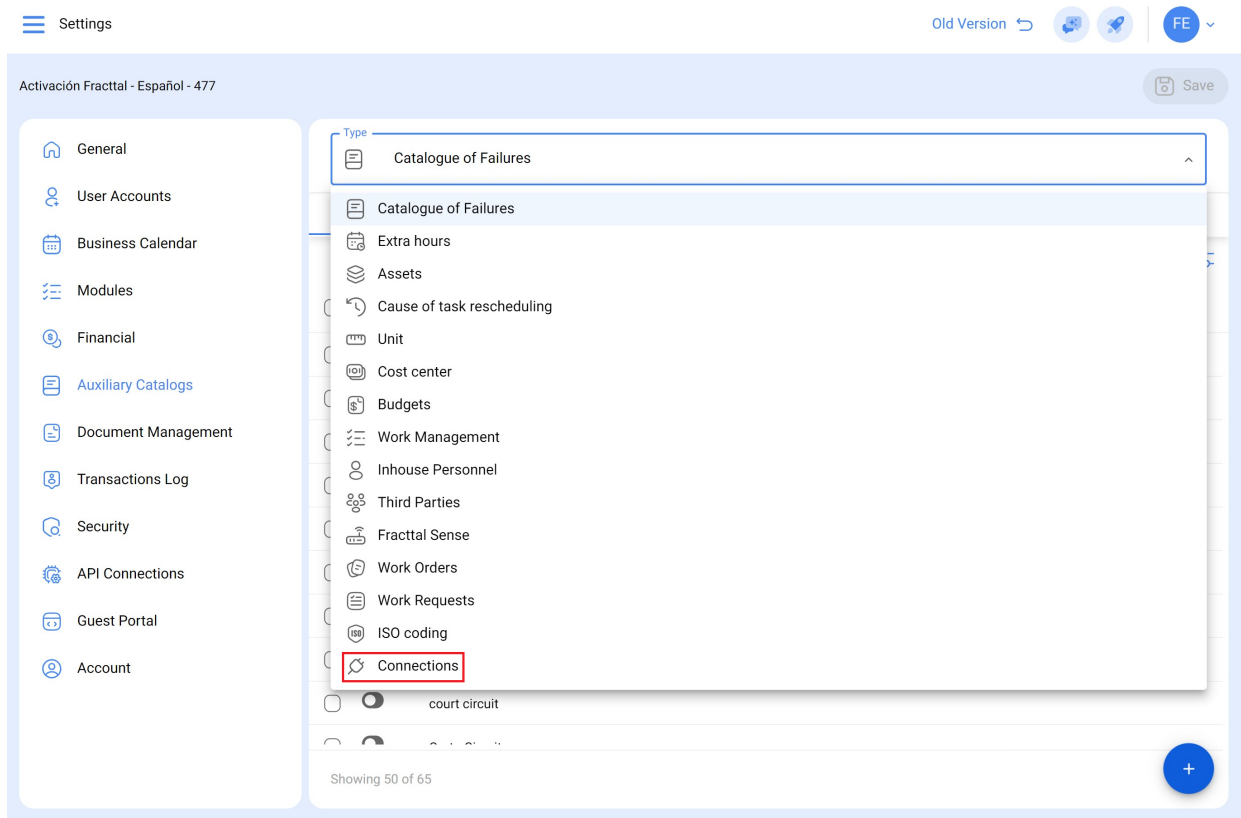
The dashboard displays several key metrics and charts. The top row shows four cards: '101 WOs in Process', '14 WOs in Review', '56 Closed WOs', and '10 Pending Tasks with Delay'. Below these are two donut charts: 'Scheduled vs. Unplanned Tasks' (72.4% Planned, 27.6% Unplanned) and 'Compliance Percentage' (32.7%). The bottom row shows four more cards: '2 Failures that Caused Damage', '130 Currently stopped assets', '63 Planned downtimes', and '16 Unplanned downtimes'. On the right, there are two bar charts: 'Work Orders' (WO's Created, Finished Work Orders, Pending WOs) and 'Work Requests' (Created, Solved). A user profile dropdown menu is open, showing the user's name 'Fabían Eliecer Montoya Fonnegra', email 'fabian.montoya@fractal.com', and language 'Español - 477'. The 'Settings' option is highlighted in red.

3. In the left side menu, select “Auxiliary Catalogs”.

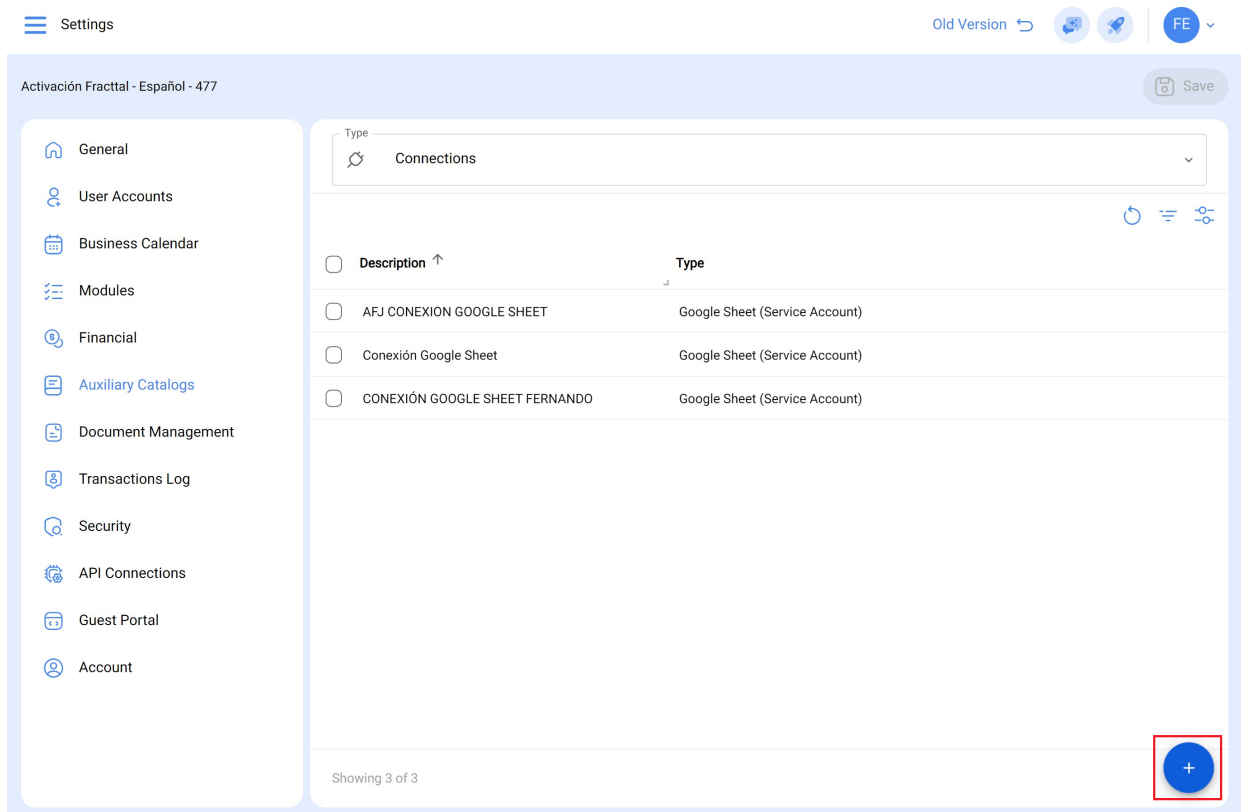
The Settings page shows a sidebar with various categories. The 'Auxiliary Catalogs' option is highlighted in red. The main content area displays a 'Catalogue of Failures' with a table of failure types. The table has columns for 'FAILURE TYPES', 'FAILURE CAUSES', and 'FAULT DETECTION'. The 'Description' column is sorted in ascending order. The table lists various failure types with their corresponding causes and detection methods. A 'Save' button is visible in the top right corner of the settings area.

FAILURE TYPES	FAILURE CAUSES	FAULT DETECTION
<input type="radio"/>	Description ↑	
<input type="radio"/>	Alta temperatura	
<input type="radio"/>	ar não gela	
<input type="radio"/>	Atascamiento	
<input type="radio"/>	Bateria con voltaje bajo	
<input type="radio"/>	CALENTAMIENTO DE MOTOR	
<input type="radio"/>	CAVITATION	
<input type="radio"/>	CORROSION	
<input type="radio"/>	CORTO CIRCUITO	
<input type="radio"/>	court circuit	

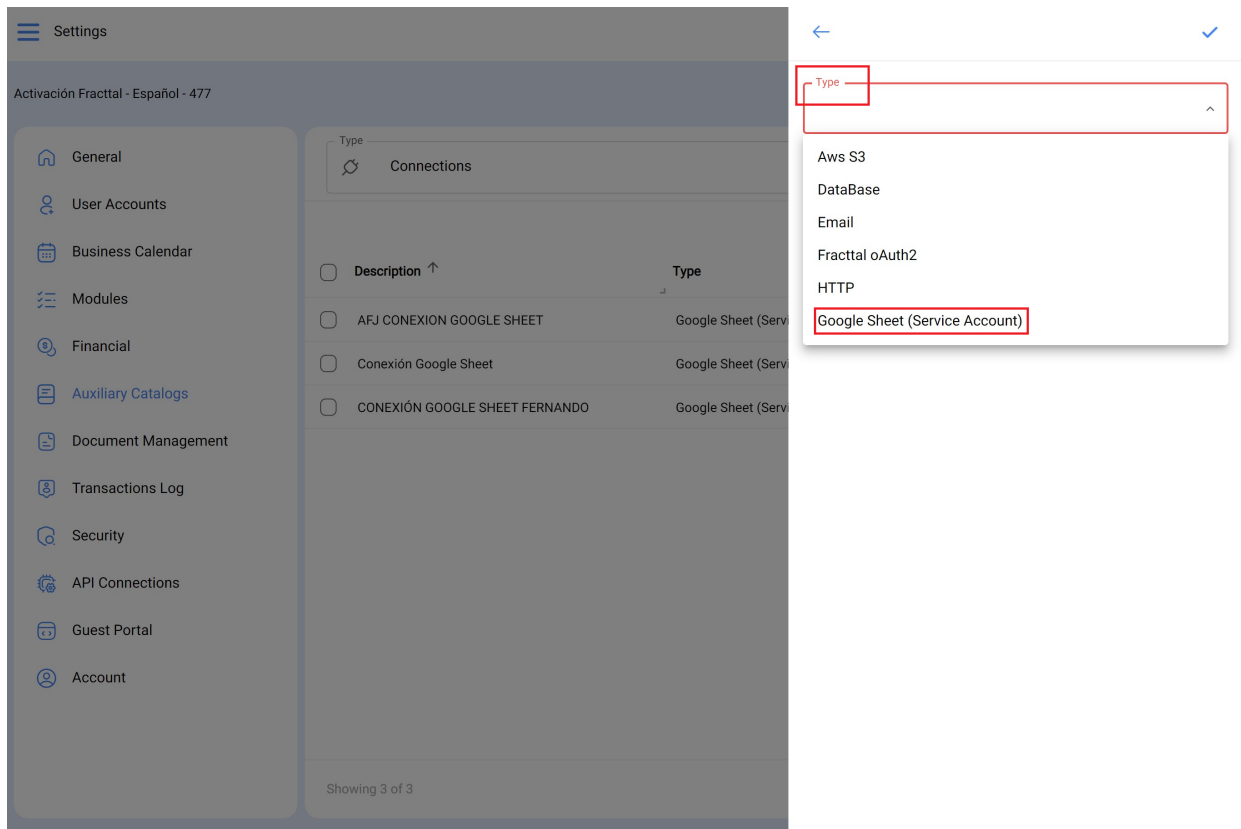
4. Within the drop-down options, choose “Connections”.



5. Click on the “Add” button located in the lower right corner.



6. In the first field titled “Type”, a menu will be displayed. Select the desired connection type. In this case, as an example, we will select Google Sheets.



7. Once the connection type is selected, fill in the fields below as needed. This information must be populated according to the JSON file that was previously downloaded during the Google account setup.

```
JSON
{
  "type": "service_account",
  "project_id": "api-project-XXX",
  "private_key_id": "2cd ... ba4",
  "private_key": "-----BEGIN PRIVATE KEY-----\nNrDyLw ... jINQh/9\n-----END PRIVATE KEY-----\n",
  "client_email": "47300000000-yoursisdifferent@developer.gserviceaccount.com",
  "client_id": "473 ... hd.apps.googleusercontent.com",
  ...
}
```

The image shows a settings application interface. On the left is a sidebar menu with options like General, User Accounts, Business Calendar, Modules, Financial, Auxiliary Catalogs, Document Management, Transactions Log, Security, API Connections, Guest Portal, and Account. The main area is titled 'Activación Fractal - Español - 477' and shows a 'Connections' table with columns for 'Description' and 'Type'. Three entries are listed: 'AFJ CONEXION GOOGLE SHEET', 'Conexión Google Sheet', and 'CONEXIÓN GOOGLE SHEET FERNANDO', all of type 'Google Sheet (Service Account)'. Below the table is a configuration form for a new connection, outlined in red. The form includes fields for Type (Google Sheet (Service Account)), Description (AFJ CONEXION GOOGLE SHEET), Type (service\_account), project\_id\* (my .8515), private\_key\_id\* (masked), private\_key\* (masked), client\_email\* (conexionfrac :t-428515.iam.gs), client\_id\* (105879: 9347734), client\_x509\_cert\_url\* (https://www.googlea iuth2/v1/certs), and auth\_uri (https://accounts.google.com/o/oauth2/auth).

8. Once you have filled in the corresponding information, you must click on Save.

Settings

Activación Fractal - Español - 477

- General
- User Accounts
- Business Calendar
- Modules
- Financial
- Auxiliary Catalogs
- Document Management
- Transactions Log
- Security
- API Connections
- Guest Portal
- Account

Connections

Description ↑	Type ↓
<input type="checkbox"/> AFJ CONEXION GOOGLE SHEET	Google Sheet (Serv
<input type="checkbox"/> Conexión Google Sheet	Google Sheet (Serv
<input type="checkbox"/> CONEXIÓN GOOGLE SHEET FERNANDO	Google Sheet (Serv

Showing 3 of 3

Type: Google Sheet (Service Account)

Description: AFJ CONEXION GOOGLE SHEET

Type: service\_account

project\_id \*: my-428515

private\_key\_id \*: .....

private\_key \*: .....

client\_email \*: conexionfrac-t-428515.iam.gs

client\_id \*: 105879:9347734

client\_x509\_cert\_url \*: https://www.googlea-uth2/v1/certs

auth\_uri: https://accounts.google.com/o/oauth2/auth

Ready, you have now configured the connection.