

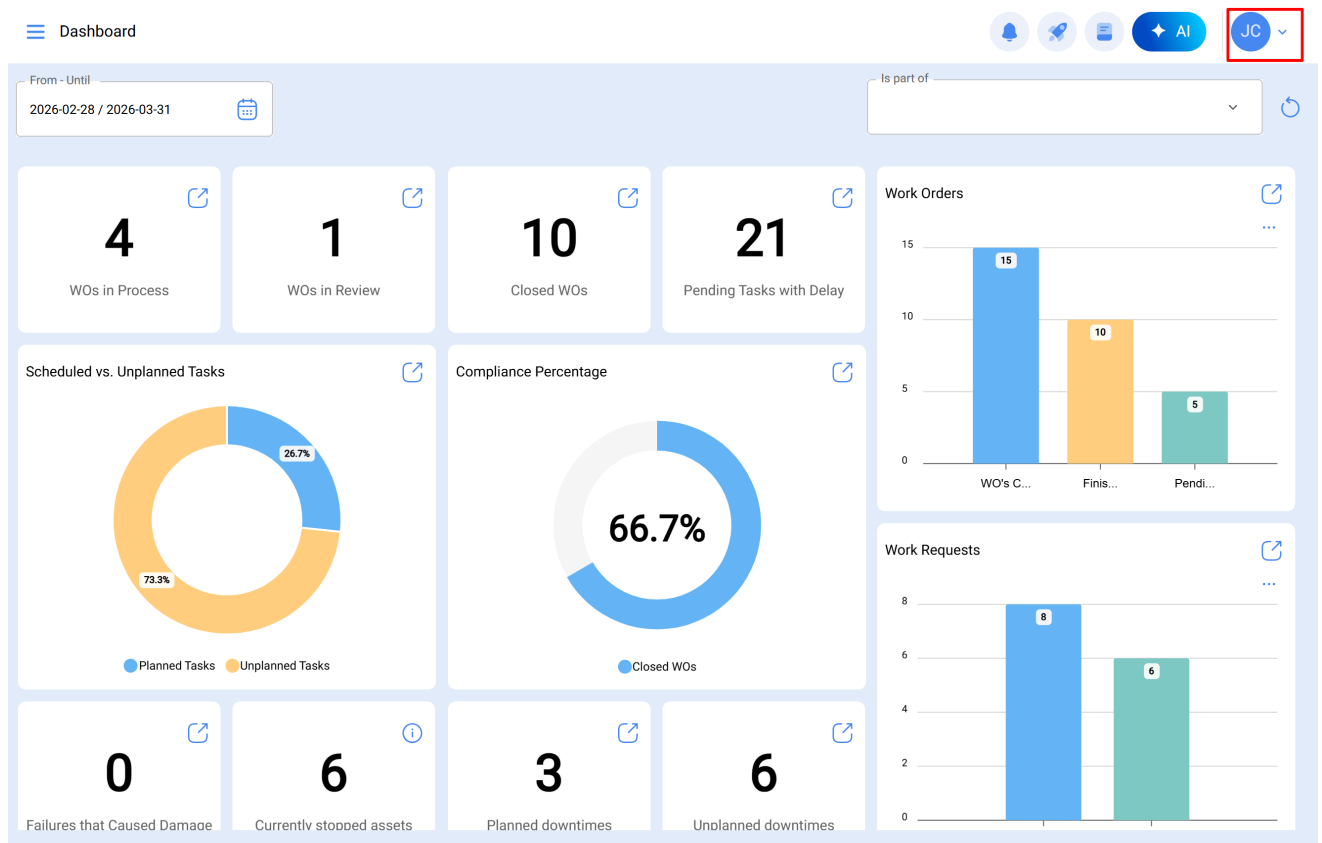
Language configuration through dynamic translation

help.fracttal.com/hc/en-us/articles/44728517492109-Language-configuration-through-dynamic-translation

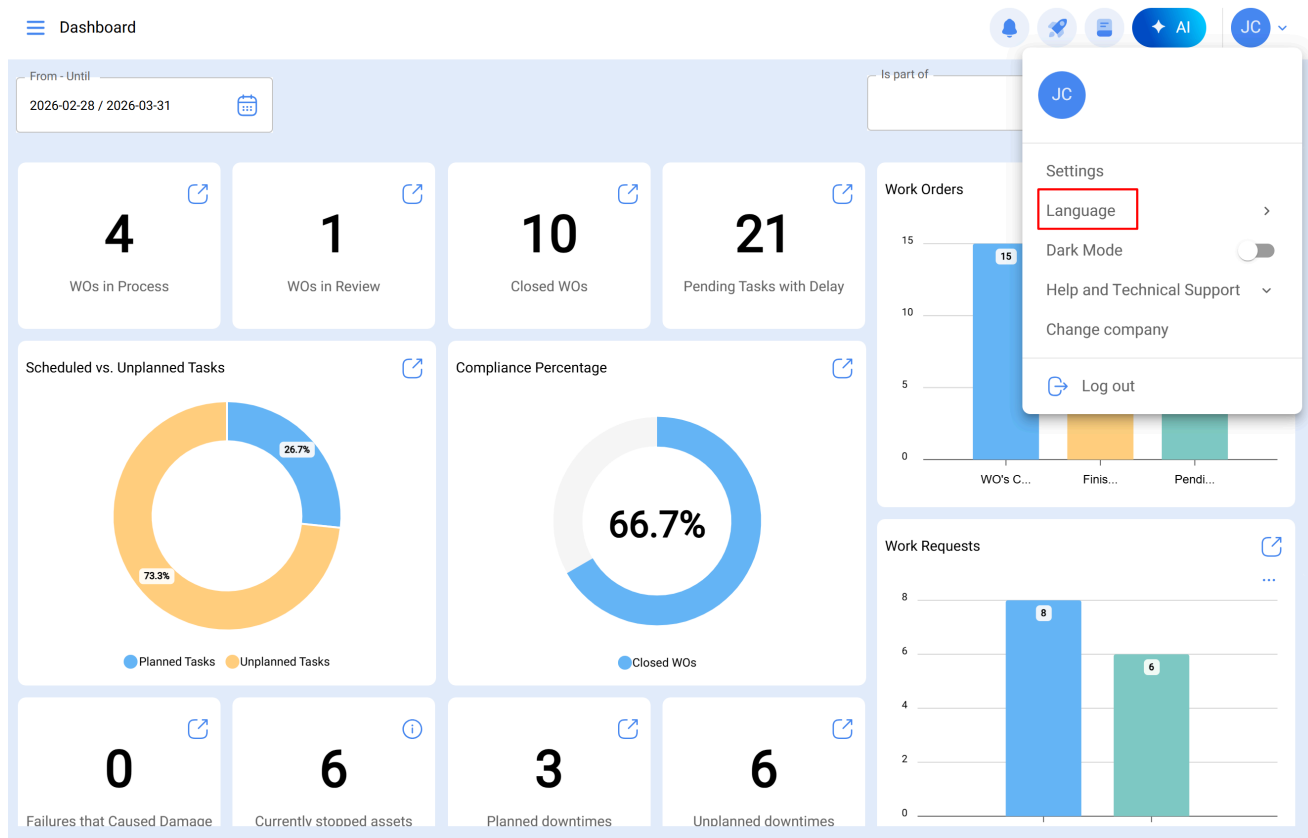
Fracttal One users have the ability to manage the software's language according to their needs, either by selecting one of the available languages or by requesting the addition of a new translation. Thanks to the dynamic translation add-on, the platform adapts effectively to different linguistic contexts, optimizing its integration into multinational environments and diverse work teams.

To manage the language in Fracttal One:

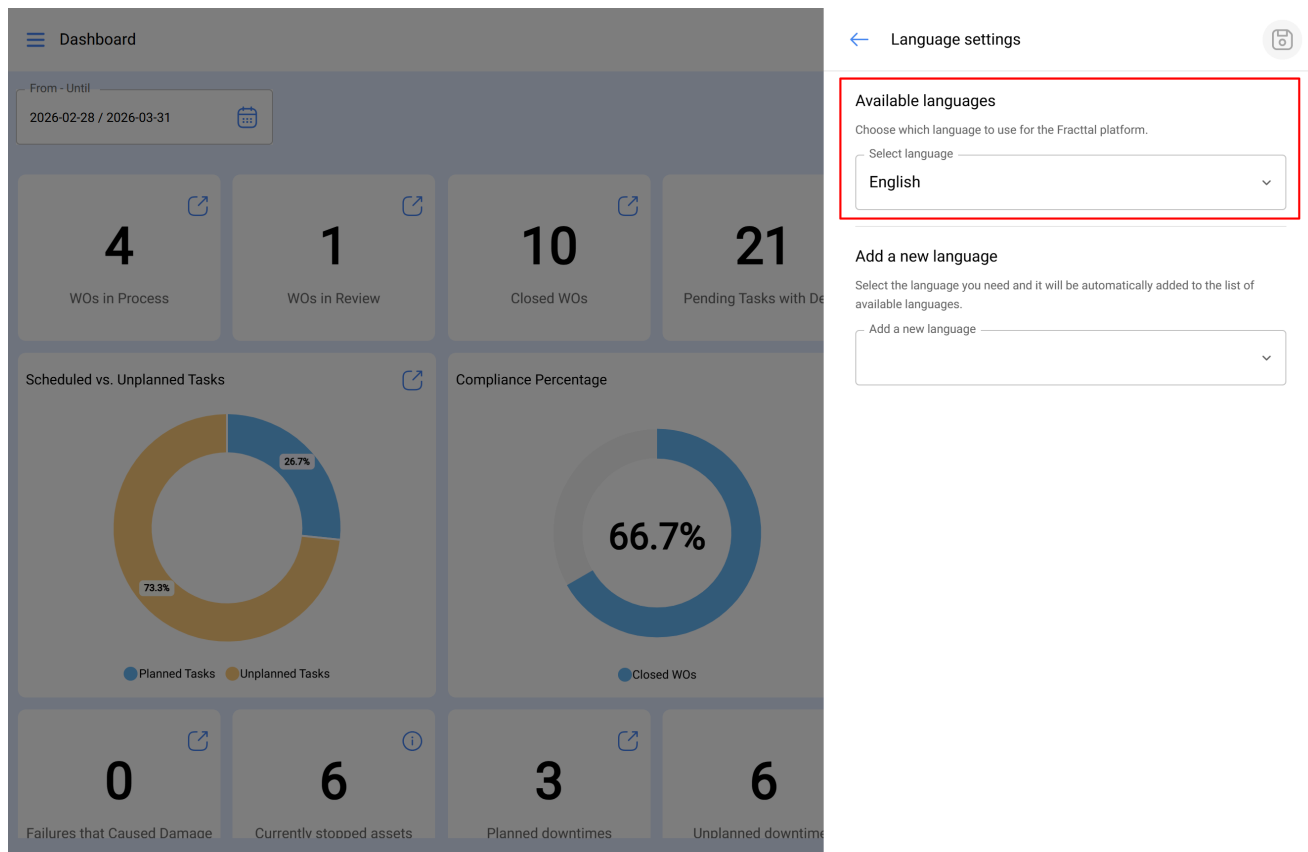
1. Access the options menu located at the top right of the platform.



2. Enter the Language option.



3. In the Available Languages section, select the language you want to use on the platform.



Additionally, if the required language is not in the list:

4. In the **Add a New Language** section, select the language you want to enable.

Dashboard

From - Until
2026-02-28 / 2026-03-31

4 WOs in Process

1 WOs in Review

10 Closed WOs

21 Pending Tasks with De

Scheduled vs. Unplanned Tasks

Compliance Percentage

66.7%

0 Failures that Caused Damage

6 Currently stooped assets

3 Planned downtimes

6 Unplanned downtime

Language settings

Available languages

Choose which language to use for the Fractal platform.

Select language
English

Add a new language

Select the language you need and it will be automatically added to the list of available languages.

Add a new language

Dashboard

From - Until
2026-02-28 / 2026-03-31

4 WOs in Process

1 WOs in Review

10 Closed WOs

21 Pending Tasks with De

Scheduled vs. Unplanned Tasks

Compliance Percentage

66.7%

0 Failures that Caused Damage

6 Currently stooped assets

3 Planned downtimes

6 Unplanned downtime

Language settings

Abkhazian

Acehnese

Acoli

Afrikaans

Shqip

Alz

ភាសាខ្មែរ

Հայերեն

অসমীয়া

Awadhi

Aymara

Azərbaycan

Balinese

Bamanakan

Bashkir

Btx

Bts

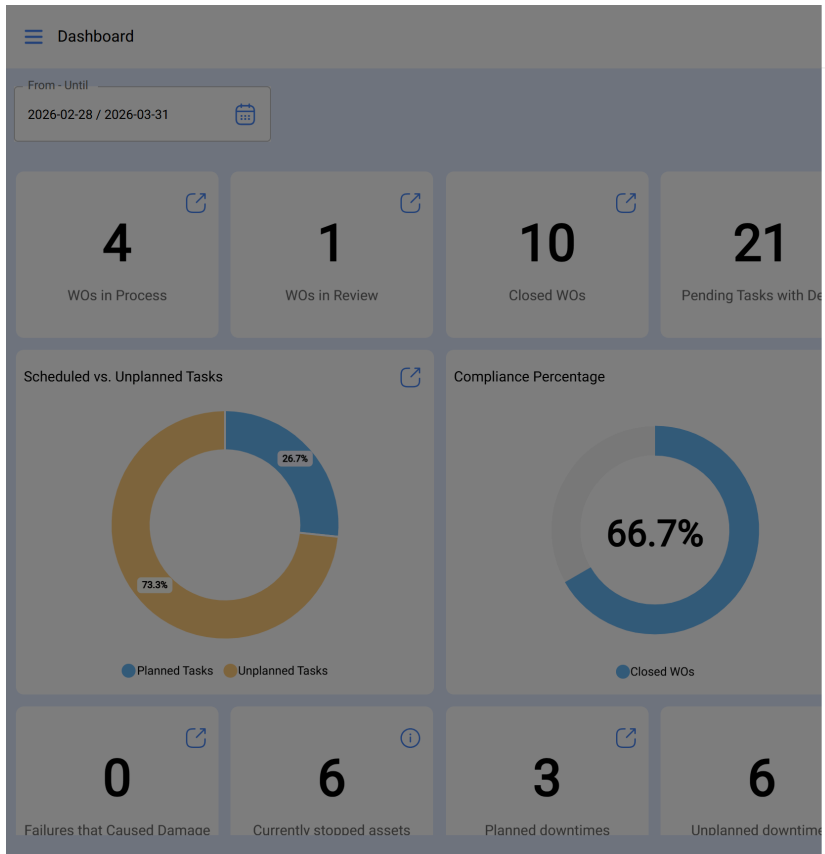
Batak Toba


Беларуская

Ichibemba

বাংলা

5. Click **Save** to complete the action.



← Language settings 

Available languages
Choose which language to use for the Fractal platform.

Select language

Add a new language
Select the language you need and it will be automatically added to the list of available languages.

Add a new language

6. The system will automatically start the language generation process, and once completed, it will be added to the list of available languages for selection.

The image shows a user interface with a dashboard and a settings panel. The dashboard includes a date range (2026-02-28 / 2026-03-31) and several key performance indicators (KPIs): 4 WOs in Process, 1 WOs in Review, 10 Closed WOs, and 21 Pending Tasks with De. There are also two donut charts: 'Scheduled vs. Unplanned Tasks' showing 73.3% Planned Tasks and 26.7% Unplanned Tasks, and 'Compliance Percentage' showing 66.7% Closed WOs. The settings panel on the right is titled 'Language settings' and shows 'Available languages' with 'English' selected. Below that, 'Add a new language' shows 'Afrikaans' as a newly added language. A green notification box at the bottom of the dashboard area contains the text: 'Request sent. We are preparing the language and it may take a few minutes. We will notify you by email when it is ready.'

The system will carry out the complete translation of the platform into the selected language, and once the process is finished, an email notification will be sent confirming the completion of the operation.

F

Fractal <no-reply@fractal.com>



Language available

Hello Jonas,

Your request for generating **Balinese language** from Language Settings has been completed successfully.

You can now select the new language and start using it on Fractal.

[Go to Language Settings](#)

If you have any questions or need further assistance, feel free to write to us at support@fractal.com.

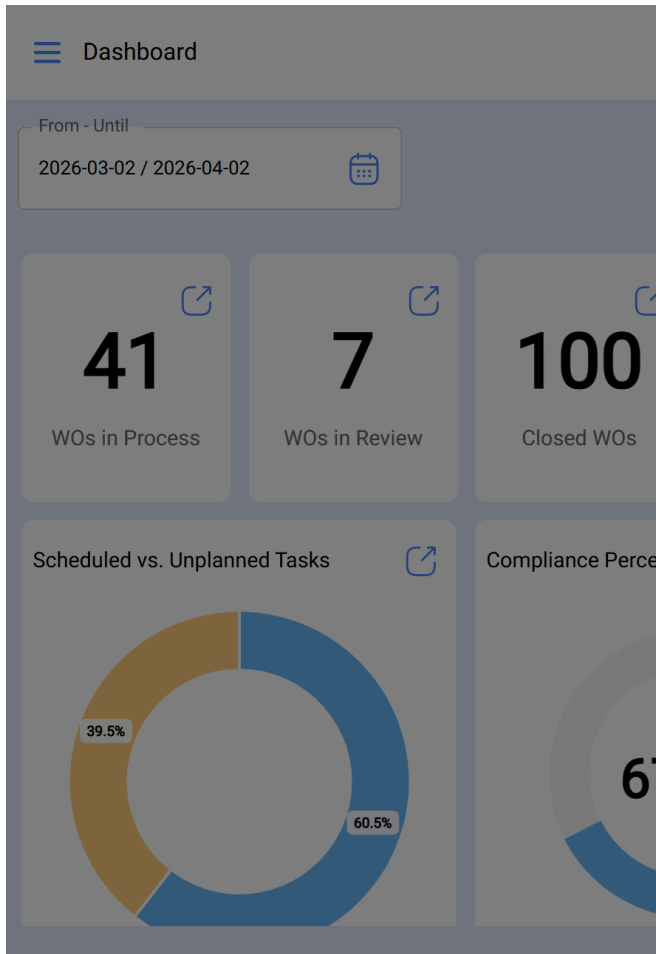


You are receiving this email because you are an active app.fractal.com user.

Copyright 2026 Fractal

Note: The email will be sent only to the language requester and may take a few minutes to be delivered.

Each time a new language is effectively added, it will be visible to all users of this database, accompanied by an icon indicating that the language is available for use on the platform.



← Language settings



- Español
- Español (Latinoamérica)
- Euskera
- Français
- Galego
- Guarani
- Italiano
- Nederlands
- Polski
- Português (BR)
- Português (EU)
- Română
- Slovenčina
- Tsonga
- Tswana