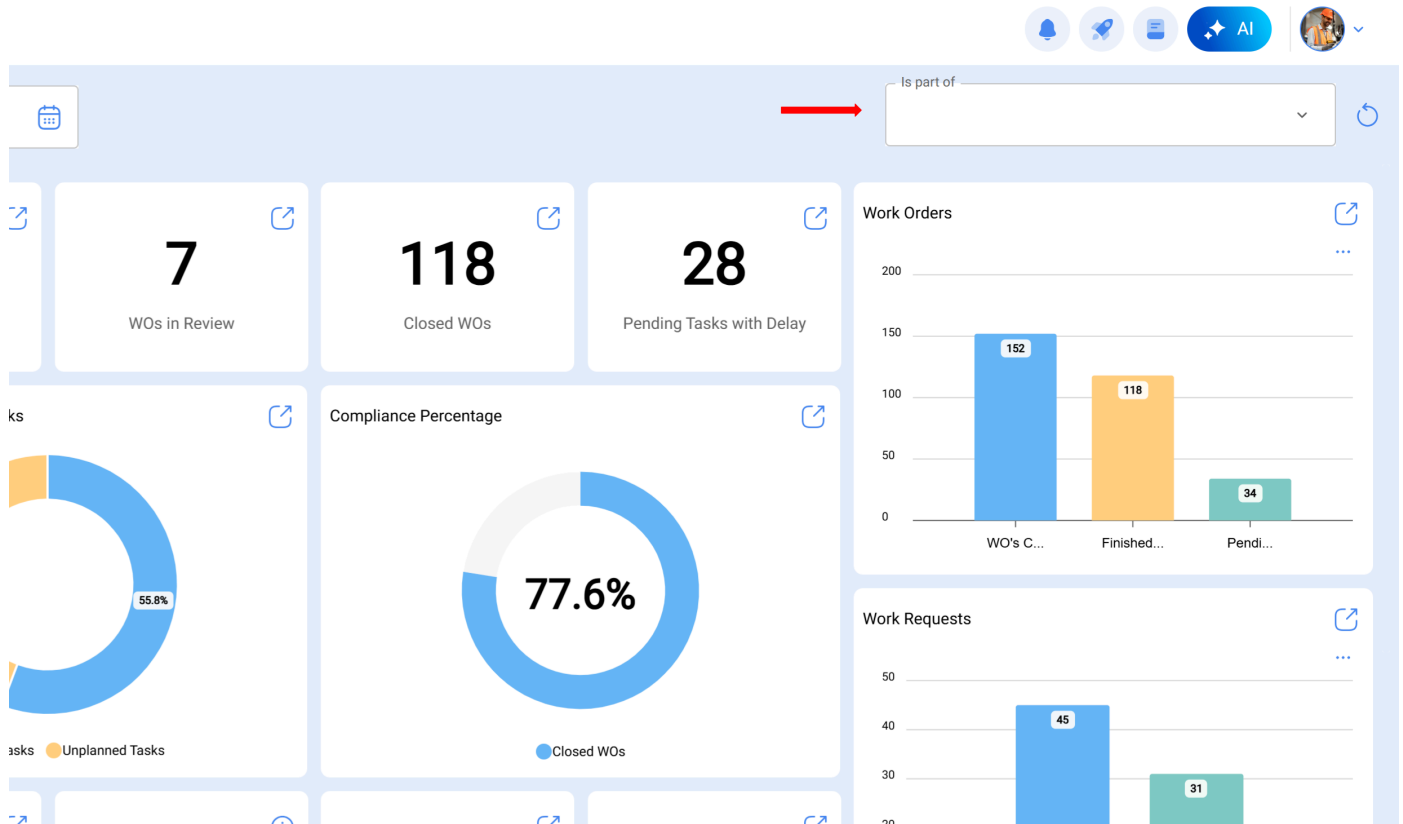


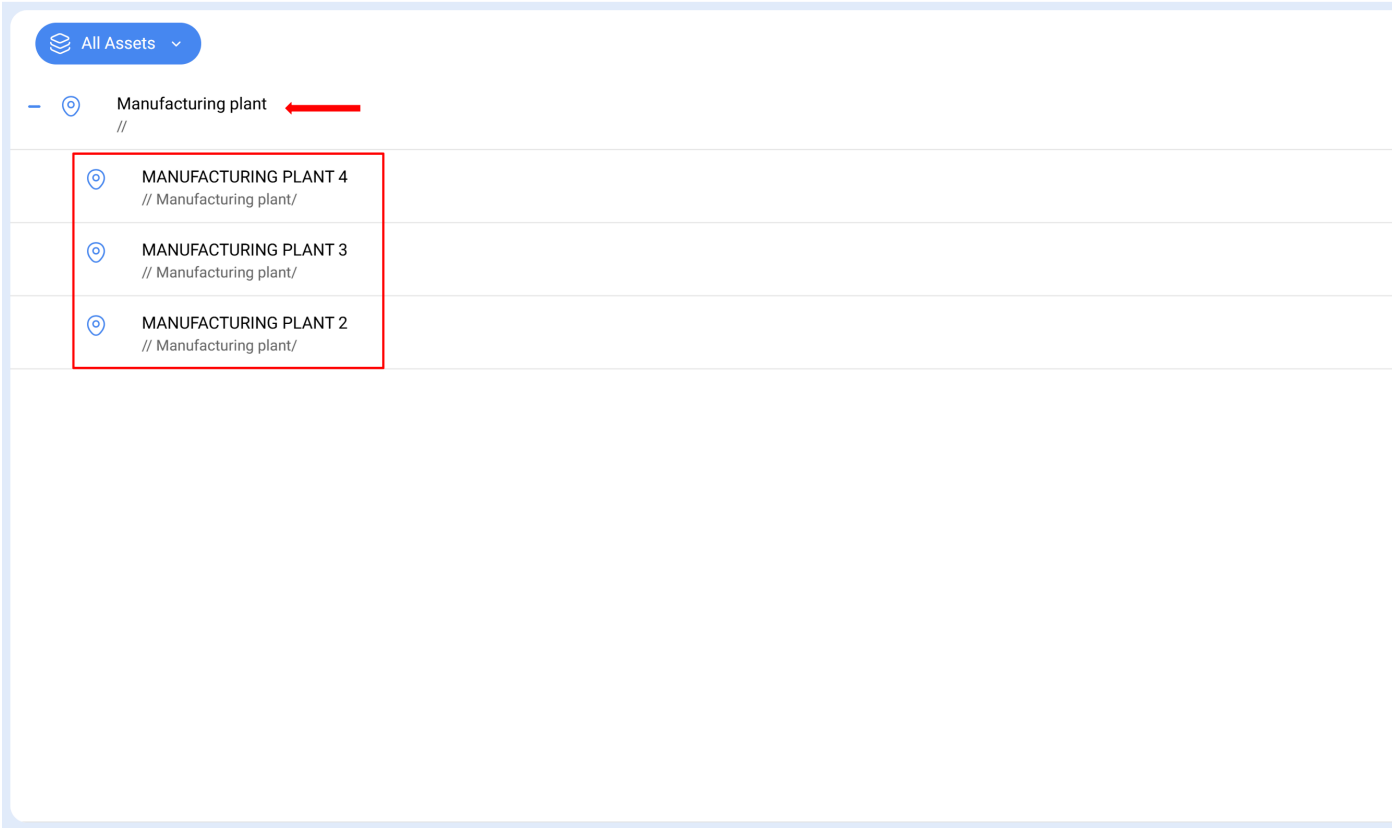
“Located in or is part of” Filter and How to Apply It? – Help Center

help.fracttal.com/hc/en-us/articles/25065844207501--Located-in-or-is-part-of-Filter-and-How-to-Apply-It

Considering that in Fractal One assets can be added and organized in a tree view structure, the “**Located in or is part of**” filter allows you to search for assets contained under the asset to which the filter is applied.

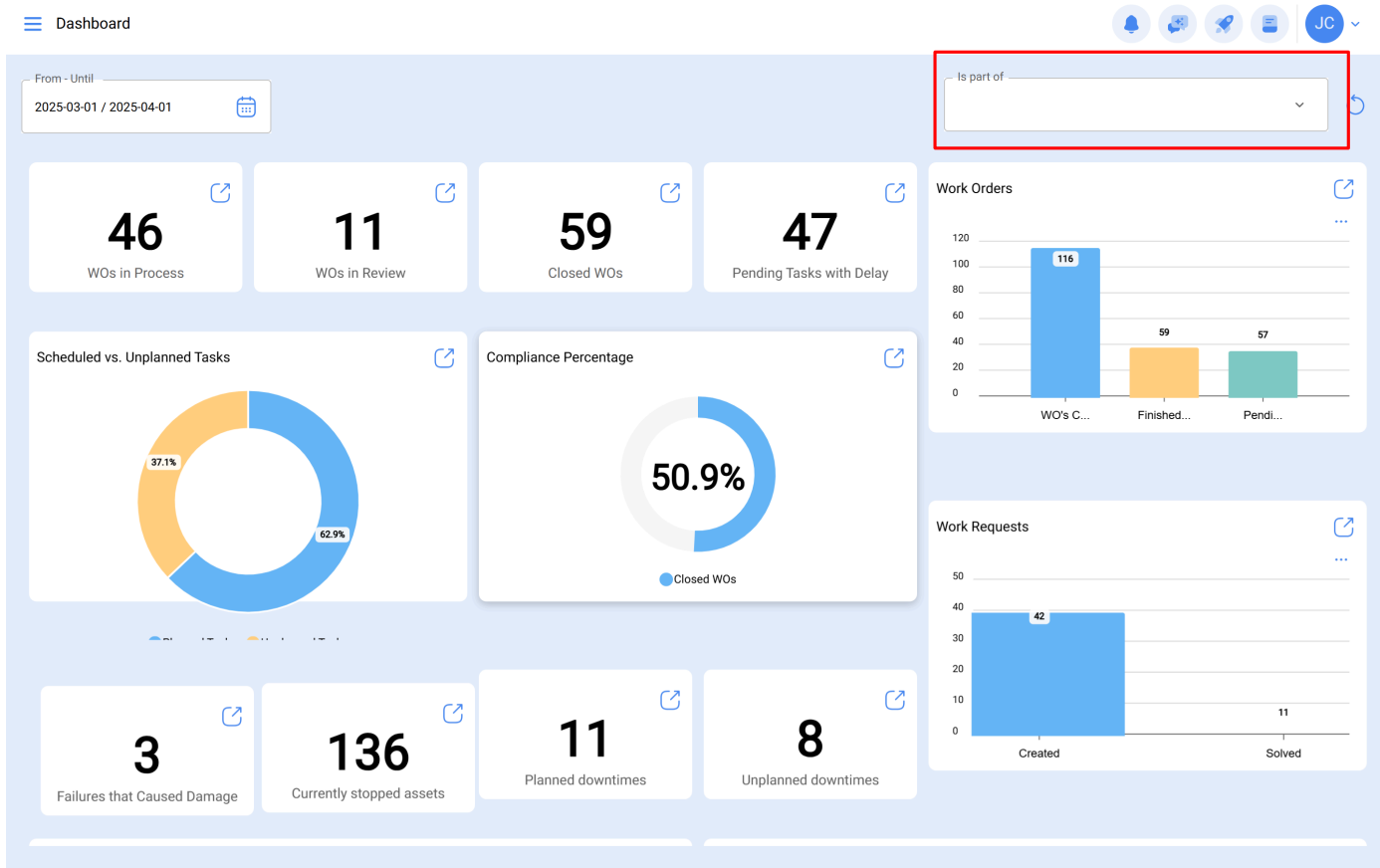


Example: If there is a main location called **Manufacturing plant**, which includes sub-locations **Manufacturing plant 4**, **Manufacturing plant 3**, and **Manufacturing plant 2** (see image), when applying a filter on the **Manufacturing plant** location, the system will display information associated with the assets present in the corresponding sub-locations (*Manufacturing plant 4, Manufacturing plant 3, and Manufacturing plant 2*).

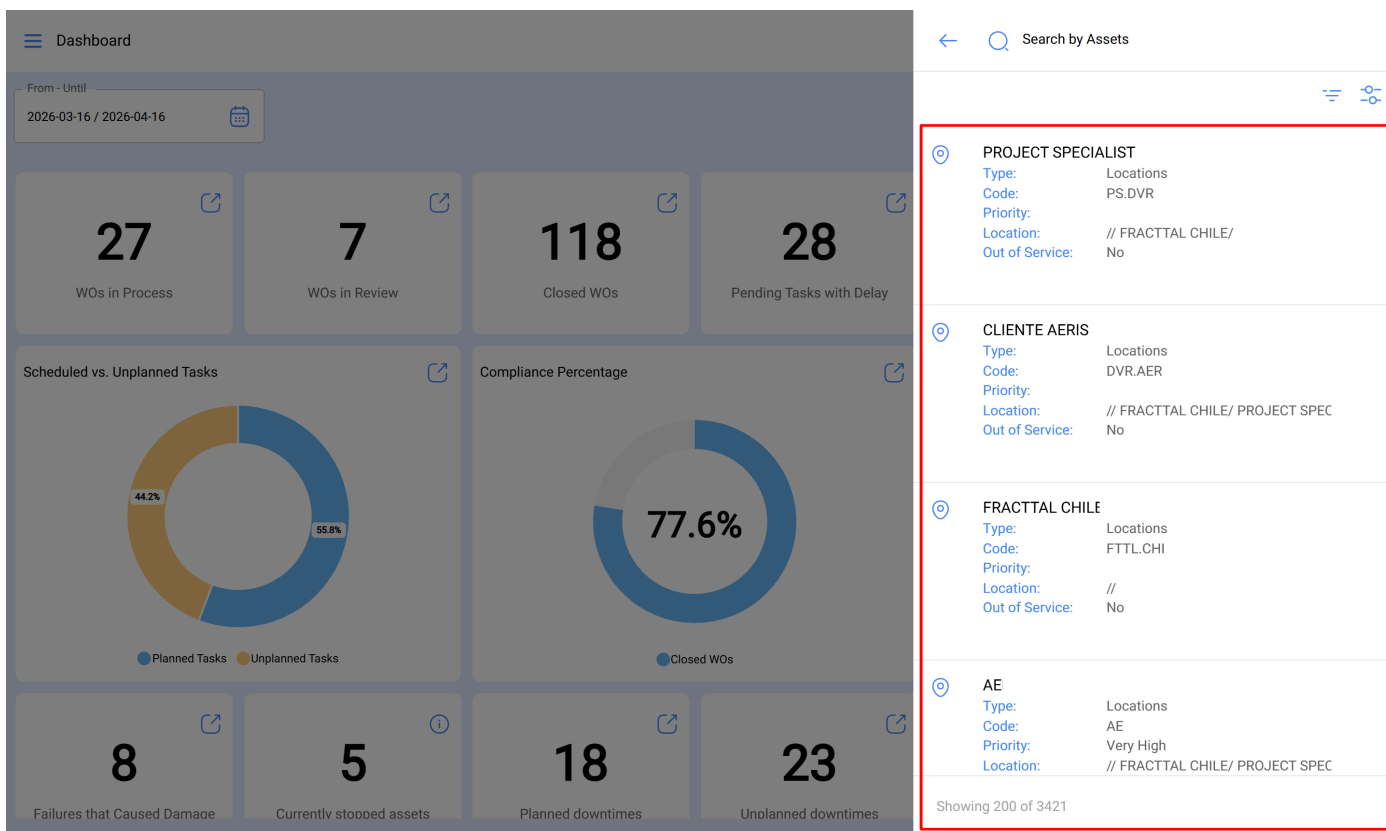


How to Apply the Filter?

To apply the filter, simply click on the bar located at the top right of the Dashboard view.



Next, the system will display a new window with all available assets, allowing you to select the desired option for the search.



Finally, after selecting the corresponding asset, the system will update and adjust all the information contained in the control panel.

