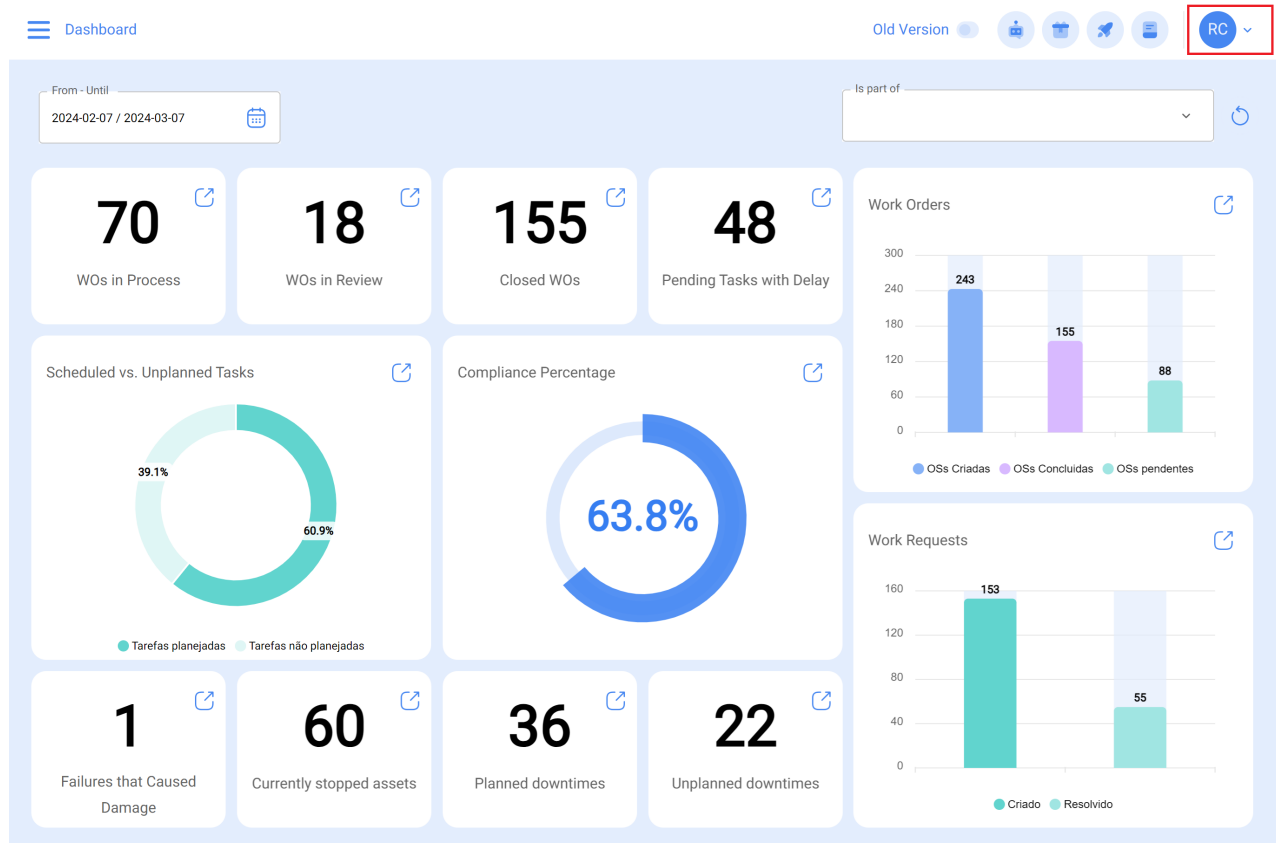
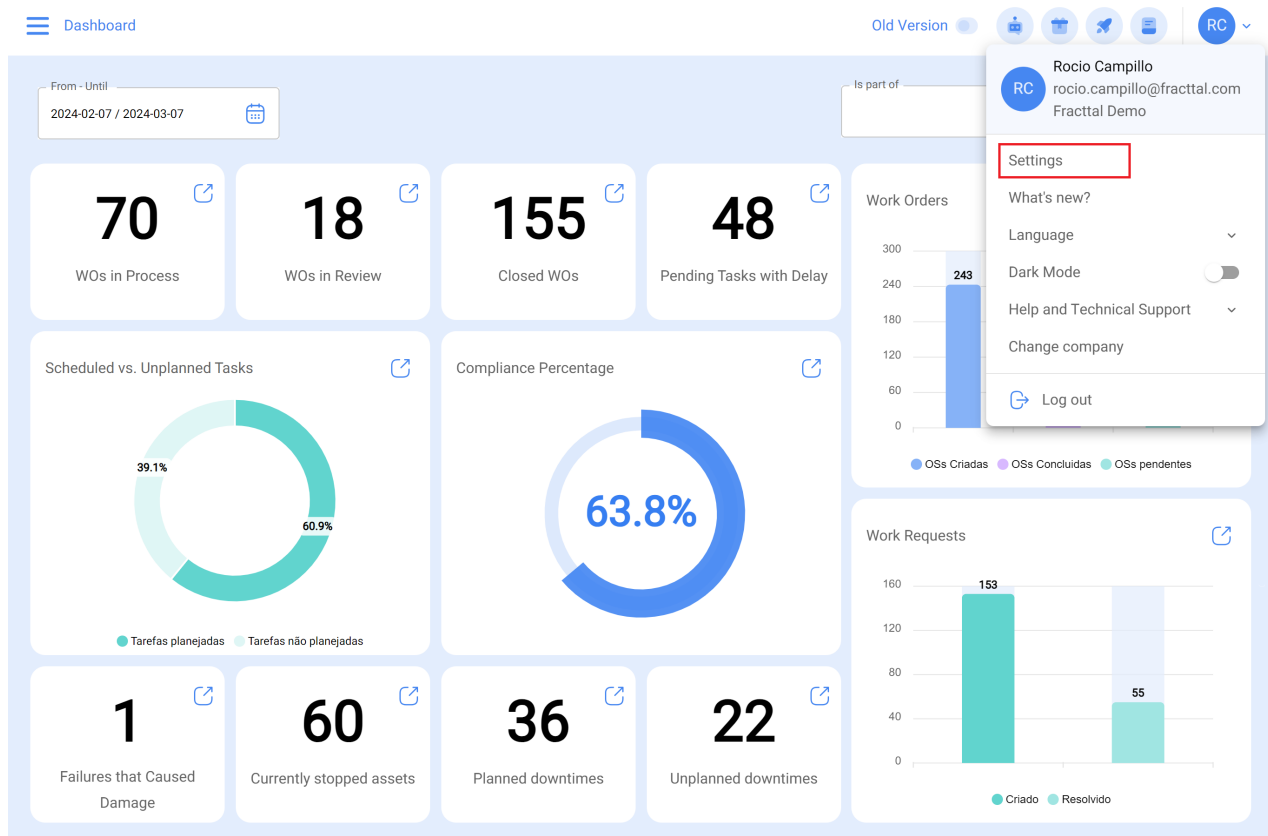


# How to access the Settings module and contents of the module

[help.fracttal.com/hc/change\\_language/en-us](https://help.fracttal.com/hc/change_language/en-us)

To access the settings module, expand the options menu at the upper right of the platform and click on the “Settings” option.





Then you will have access to the settings window on the platform.

The settings window for 'Fractal Demo' includes a sidebar with navigation options and a main form for configuration.

**Sidebar:**

- General
- User Accounts
- Business Calendar
- Modules
- Financial
- Auxiliary Catalogs
- Document Management
- Transactions Log
- Security
- API Connections
- Guest Portal
- Account

**Main Form:**

- Details:** Code (06430232751), Name (Fractal Demo), Email (alejandrotamayo@fractal.co), Currency (Colombian Peso), Thousands separator (.)
- Address:** Address, City, State, Country, Zip code
- Map:** Search on the map, Map/Satellite view, Location pin
- Time zones UTC:** America/Bogota
- Latitude:** 36,834045
- Longitude:** -2,4637136
- Primary Telephone:**
- Secondary Telephone:**
- Text telephone:**

## Module contents

Once you're in the settings module, you will see a series of submodules that will allow you to establish all the settings you need according to the specific conditions of each activity.

Fractal Demo

Details

- General
- User Accounts
- Business Calendar
- Modules
- Financial
- Auxiliary Catalogs
- Document Management
- Transactions Log
- Security
- API Connections
- Guest Portal
- Account

Code: 06430232751

Name: Fractal Demo

Email: alejandro.tamayo@fractal.co

Currency: Colombian Peso

Thousands separator: (.) The character used is a perio

Address:

City:

State:

Country:

Zip code:

Time zones UTC: America/Bogota

Latitude: 36,834045

Longitude: -2,4637136

Primary Telephone:

Secondary Telephone:

Text telephone:

Mapa Satélite

The submodules that you'll find in the settings module are the following:

- **General**
- **User Accounts**
- **Business Calendar**
- **Modules**
- **Financial**
- **Auxiliary Catalogs**
- **Document Management**
- **Transactions Log**
- **Security**
- **API Connections**
- **Guest Portal** (add-on)
- **Account**