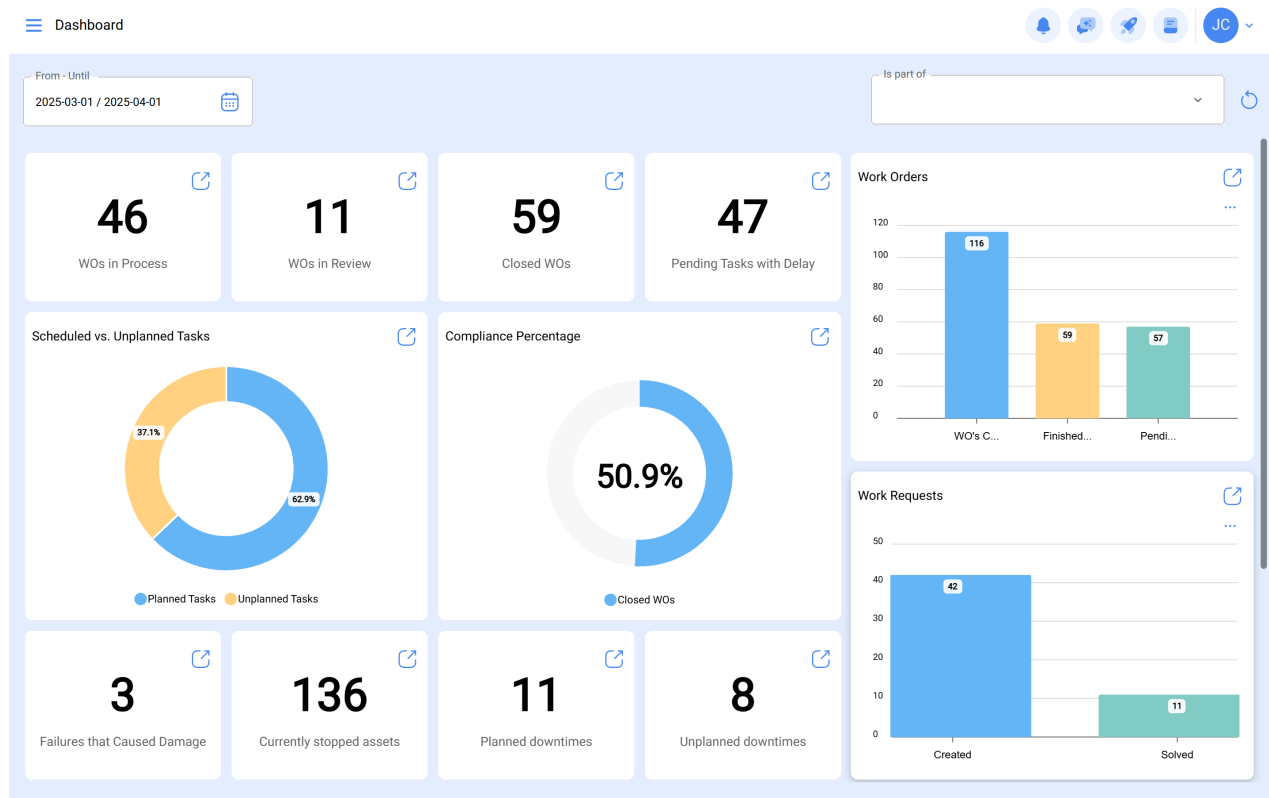


# Dashboard

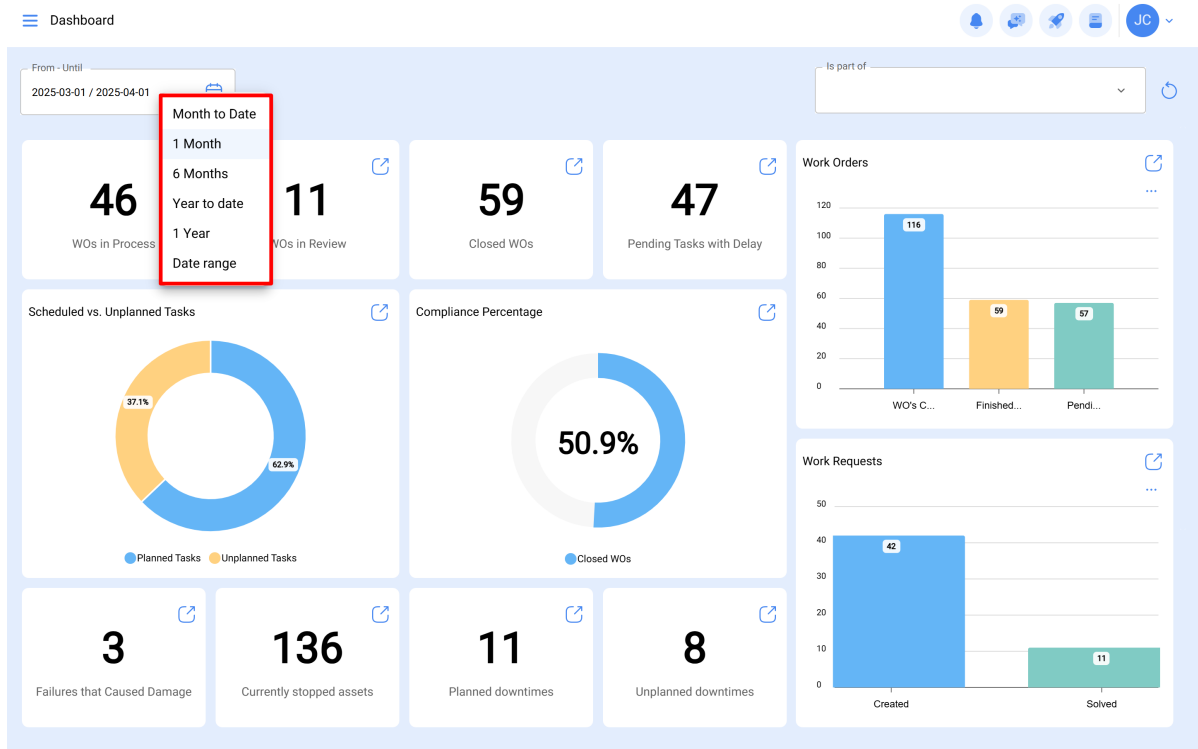
[help.fractal.com/hc/en-us/articles/25065623809805-Dashboard](https://help.fractal.com/hc/en-us/articles/25065623809805-Dashboard)

The dashboard is the board where you will be able to visualize in an updated and summarized way the information of your management in the platform. You will obtain indicators and dynamic graphs with the following:

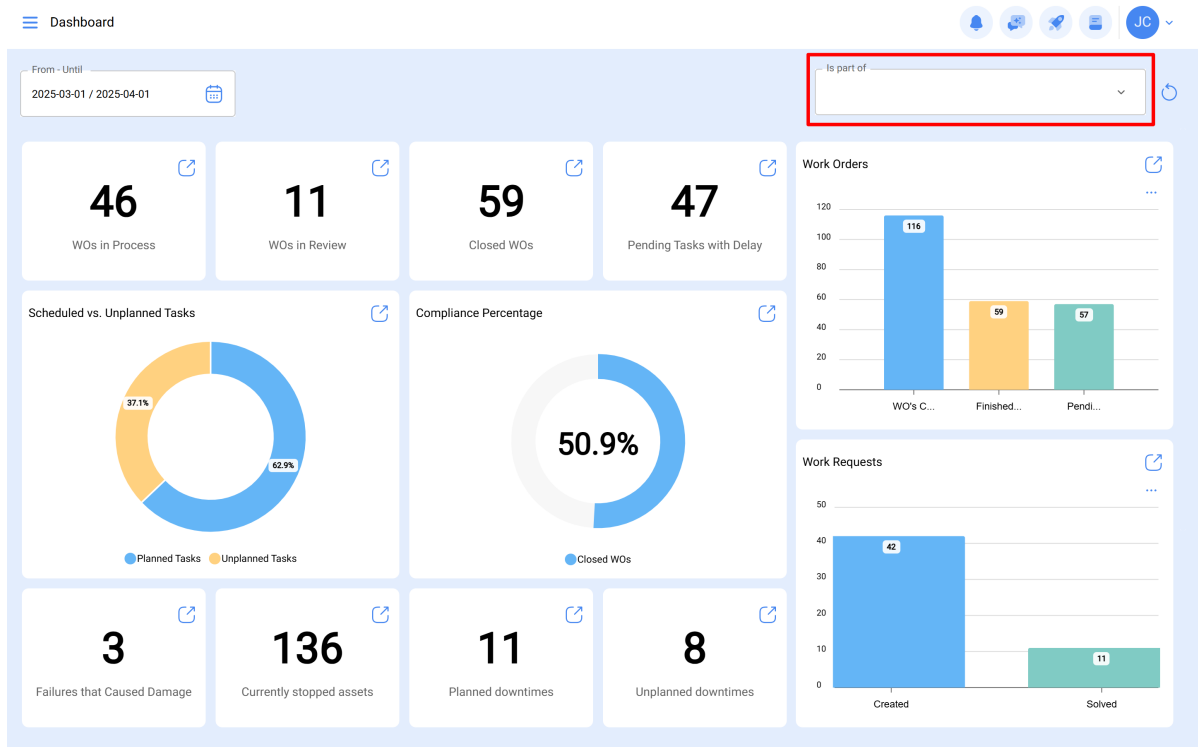


In this interface, you can interact as follows:

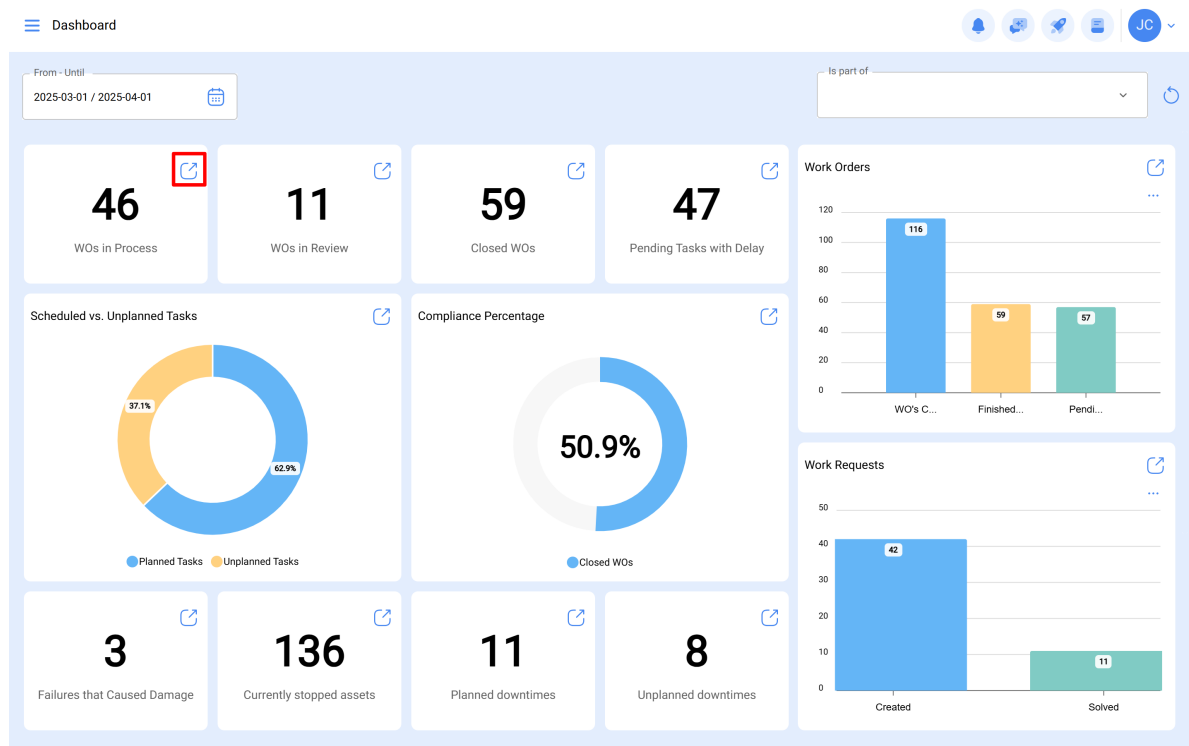
1. **Date:** In this option, you can select a date range according to your interest. You can choose options such as 1 month, 6 months, current year, 1 year or any date range you wish.



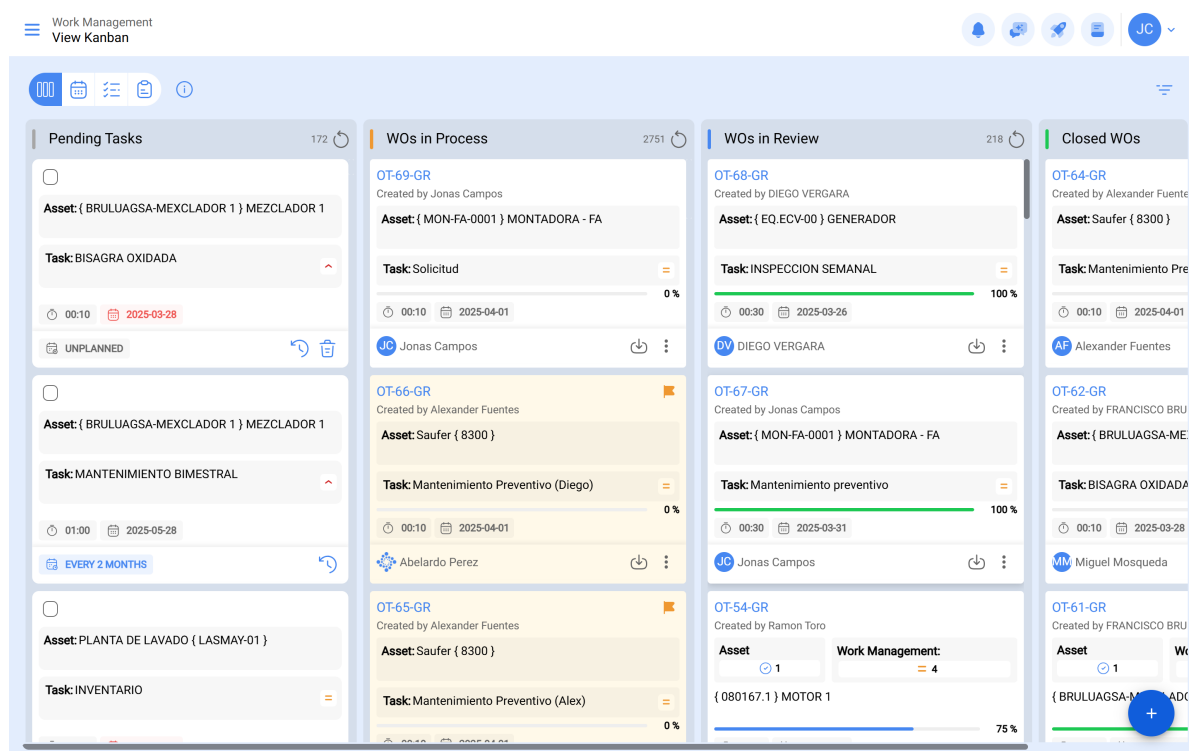
2. **Located in or is part of:** Here, you can select a specific location. Once selected, it will show you the indicators of the location. For this reason, it is extremely important to correctly locate the various pieces of equipment.



3. **Quick view icon:** This icon will take you to details about the information being reported.

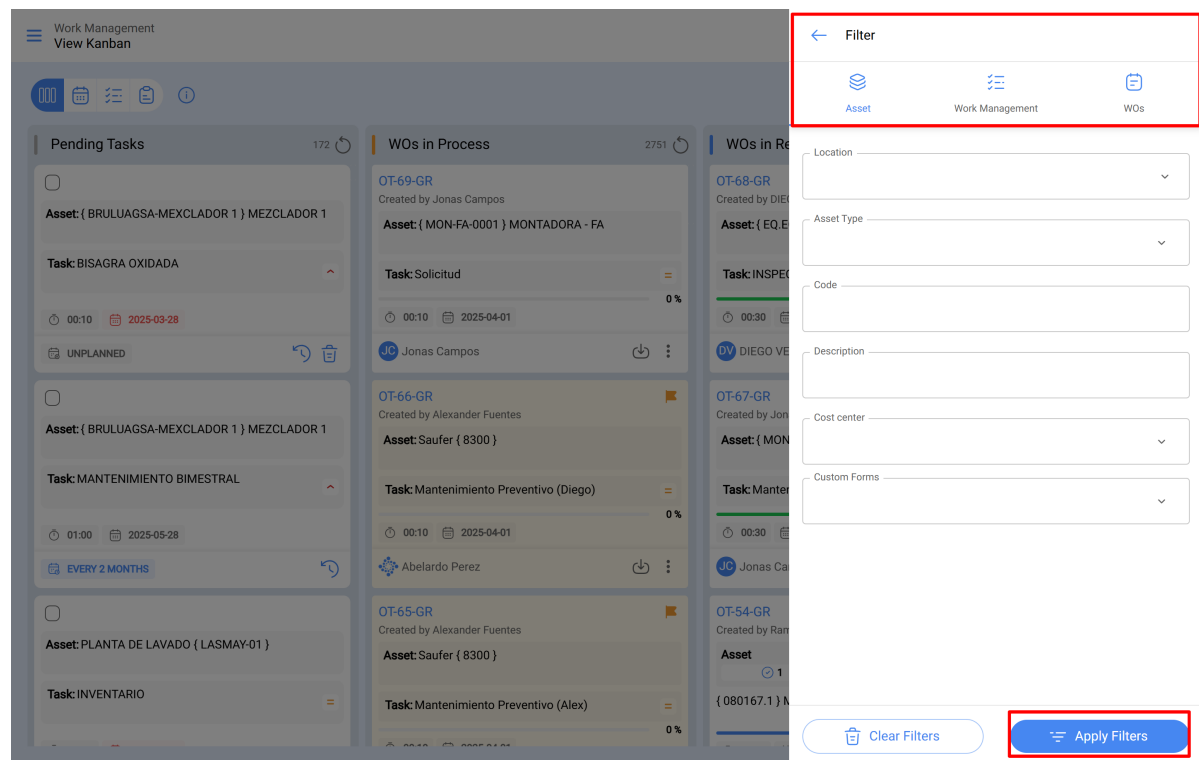
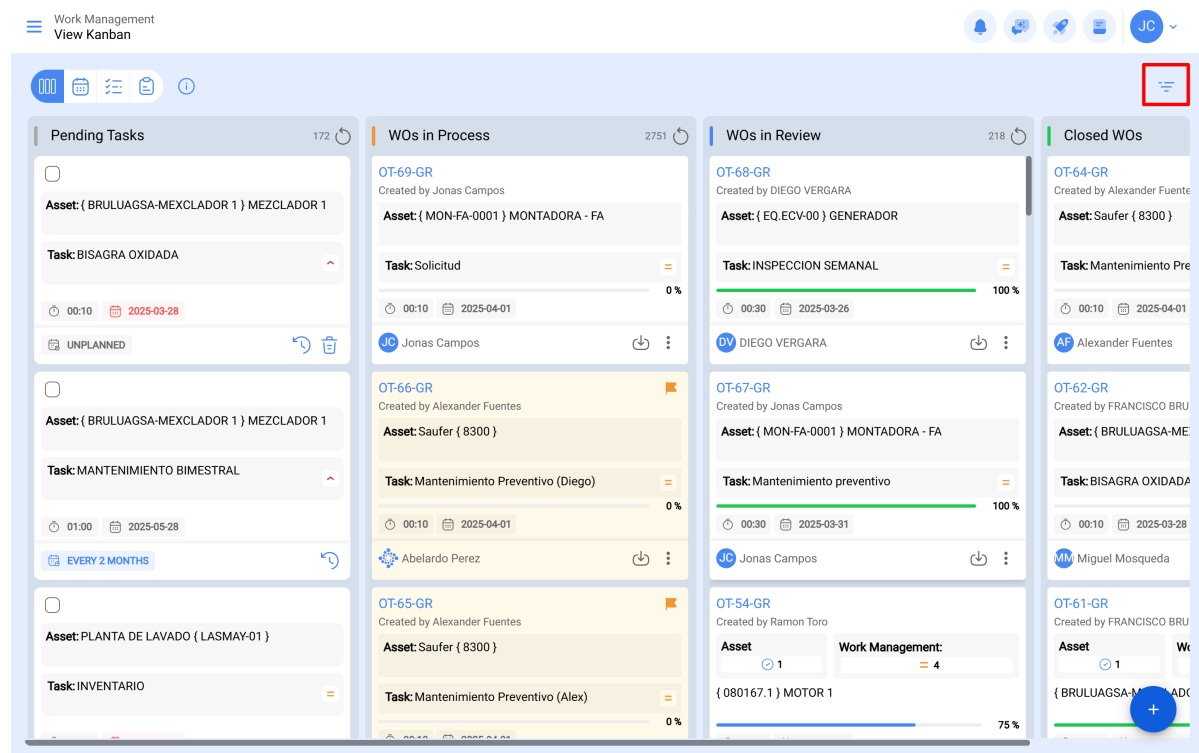


For example, if the dashboard mentions 11 work orders in process (WO) and you click on the icon shown in the image, it will take you to the interface where the work orders in process are located (Work Orders Module).



As a recommendation, remember to also apply the filter in the module to which I am redirecting you, either by date and/or location, according to how you have it configured in the dashboard. This will ensure a consistent and accurate display of

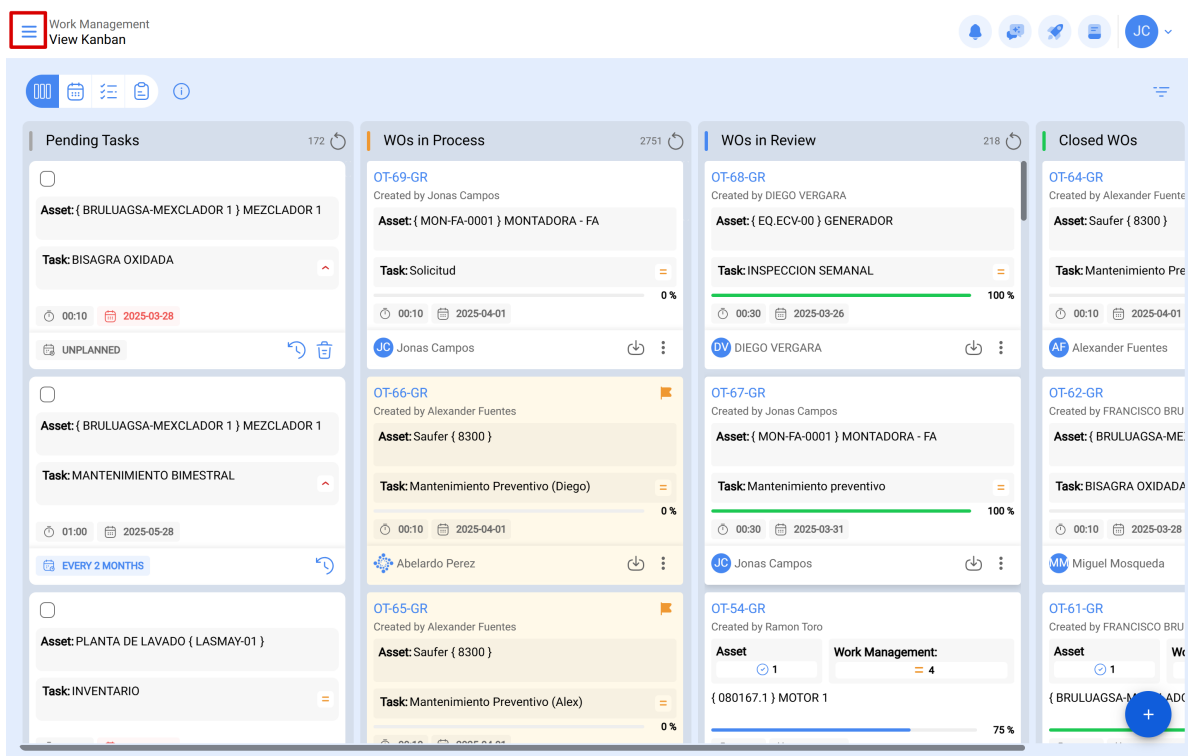
the relevant information in the corresponding module.



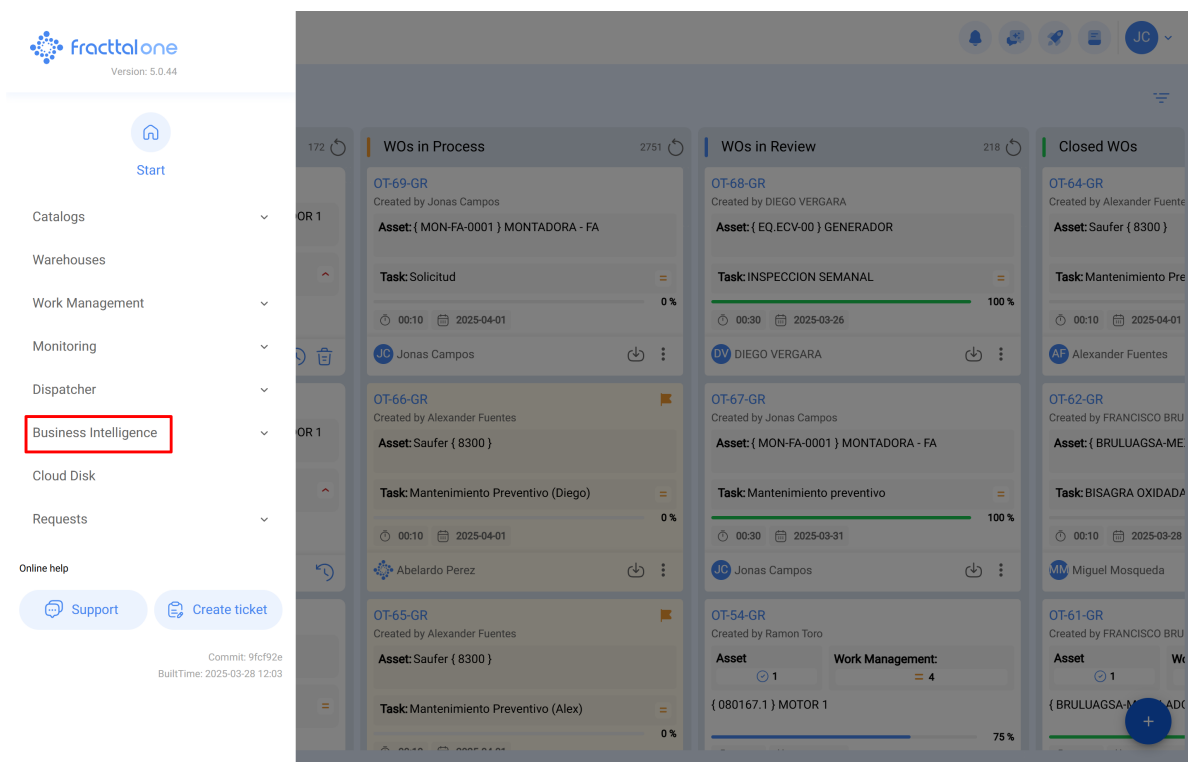
## How to access the dashboard?

If you wish to access the dashboard, you must follow these steps:

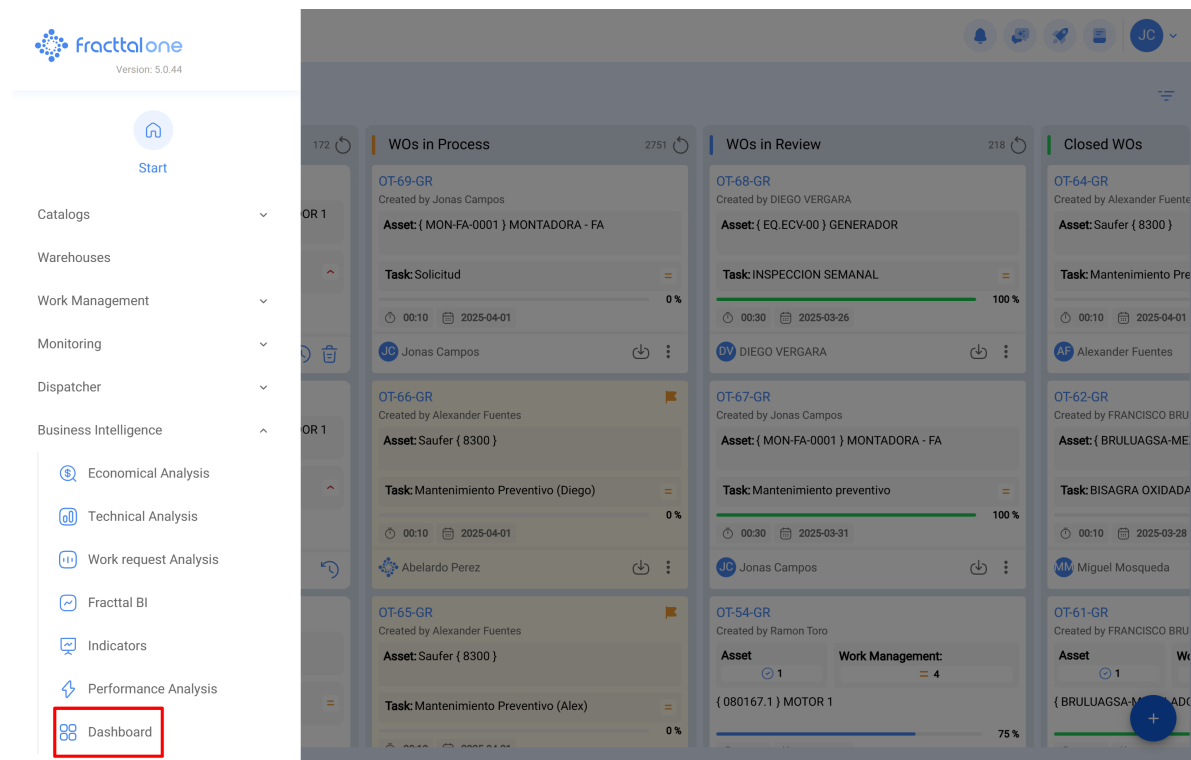
1. While in Fractal One 5.0, click on the top left menu.



2. Then, click on the "Business Intelligence" module.



3. Then click on "Dashboard" and it will take you to the interface.



## Do you want to configure the dashboard to appear at login?

**Click Here:**

### How to configure the login module?

Now let's look at the definition of each indicator shown on the dashboard:

- **WOs in Process:** Corresponds to the total number of work orders that are still in the execution stage.
- **WOs in Review:** Corresponds to the total number of work orders that have already been executed and are in the verification stage.
- **Closed WOs:** Corresponds to the total number of work orders that have been verified and completed.
- **Pending Tasks with Delay:** Corresponds to the number of jobs that are waiting to be planned as WOs according to their frequency or activation.
- **Percentage of Completion:** Graph representing the proportionality between TOs created vs. TOs completed.
- **Work Orders:** Comparative bar chart between created, completed and pending WOs.
- **Tasks:** Comparative pie chart between Planned vs. Unplanned Tasks.

- **Failures Caused Damage:** Corresponds to the number of failures associated with assets that have caused some type of damage (to the environment, facilities, injuries to internal personnel, third parties and others).
- **Stopped Equipment:** Corresponds to the number of equipment that are stopped (equipment out of service and down for maintenance).
- **Planned downtime:** Correspond to all stoppages that have occurred due to planned activities.
- **Unplanned Stoppages:** Correspond to all stoppages that have occurred due to unplanned activities.
- **Work Requests:** Comparative bar chart between requests created vs. solved.
- **Tasks Priority:** Ring chart showing the proportion between the priorities of the tasks.
- **Failure Severity:** Ring chart showing the ratio between the severity of the reported failures.
- **currently stopped assets:** This equipment is out of service in the maintenance area.