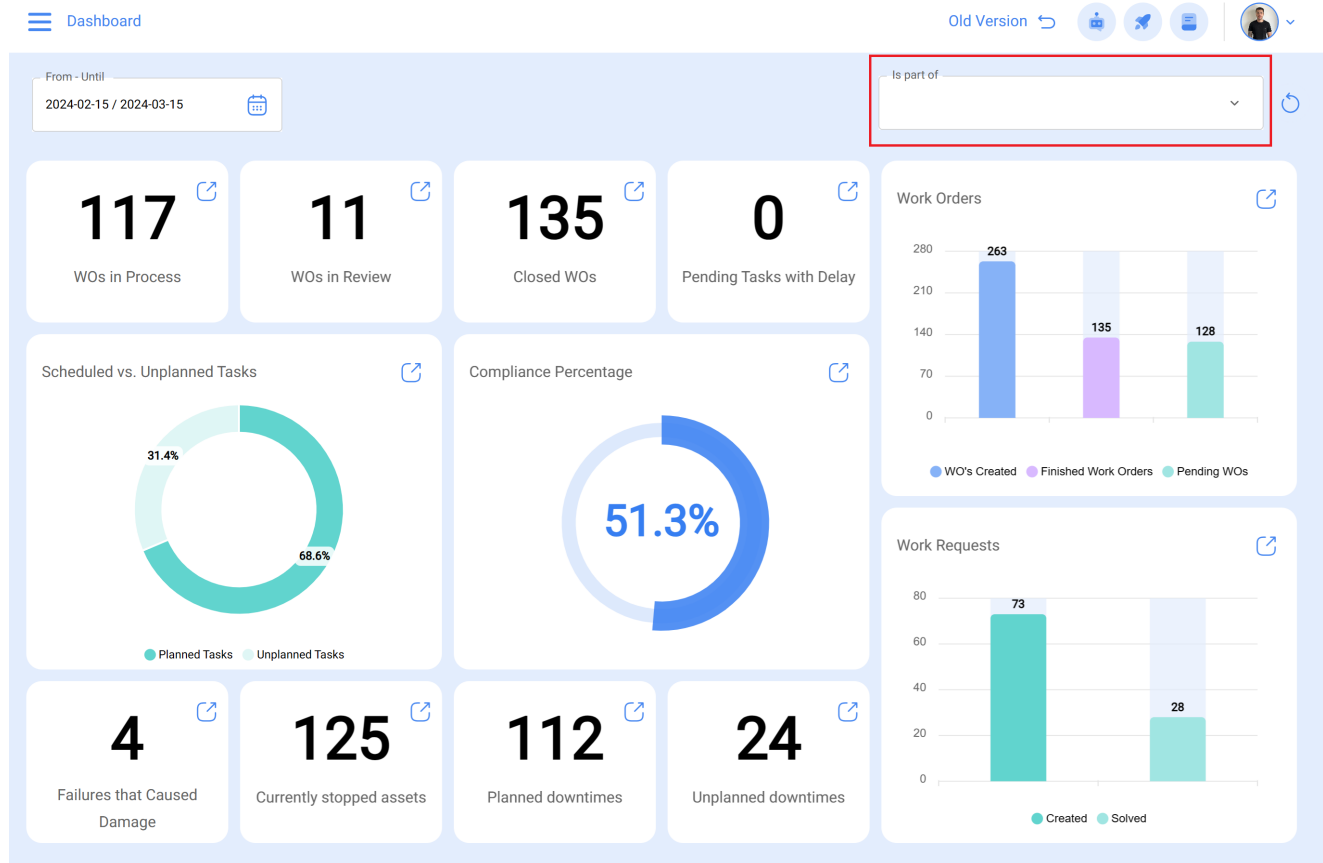


# Location or "is part of" filter and how to use it?

[help2.fractal.com/hc/en-us/articles/25065844207501-Location-or-is-part-of-filter-and-how-to-use-it](https://help2.fractal.com/hc/en-us/articles/25065844207501-Location-or-is-part-of-filter-and-how-to-use-it)



In Fractal, assets can be organized following a tree hierarchy structure, where parent assets can have one or multiple child / sub assets located under them. This parent-to-child relationship allows the "is Part of" location filter, to search for the child assets located below the selected parent asset.

**Example:** If the database has a main location named Parent Company, which then has the sublocations Level 1 and Production area, which then contain a conveyor belt as equipment (see image), If we apply the filter to the Parent Company, the system will show us the data associated with the assets in that location (Level 1 – Production area and conveyor belt).

The screenshot shows a tree view of assets. A red box highlights the following structure:

- Energy Services
  - North Riding
    - Electrical Panel PV 1
      - PV System PV1

Other assets listed below the highlighted section include:

- Empresa Matriz
- Setor de matéria-prima
- Andar 3
- Empresa Matriz
- Empresa Matriz
- HAYCO
- C&M

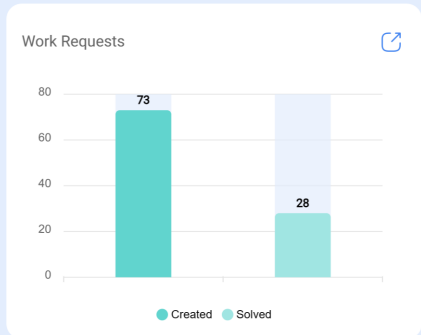
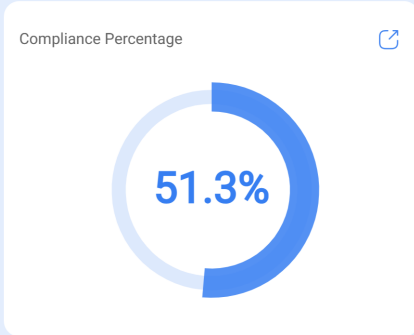
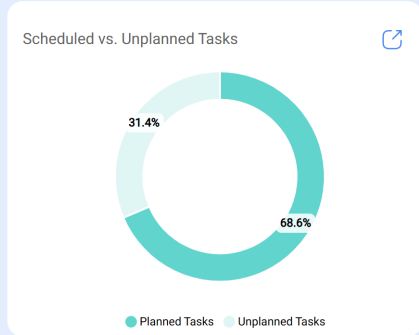
## How to apply the “Is part of” location filter?

To apply the filter, click on the **drop-down arrow** located in the “Is part of” filter bar.

From - Until  
2024-02-15 / 2024-03-15

Is part of

<b>117</b> WOs in Process	<b>11</b> WOs in Review	<b>135</b> Closed WOs	<b>0</b> Pending Tasks with Delay
------------------------------	----------------------------	--------------------------	--------------------------------------



<b>4</b> Failures that Caused Damage	<b>125</b> Currently stopped assets	<b>112</b> Planned downtimes	<b>24</b> Unplanned downtimes
---	--	---------------------------------	----------------------------------

This will display a dropdown menu showing all the available assets that can be selected to perform the search filter.

Select the preferred asset from the list

The image shows a dashboard interface with a search overlay. The dashboard background is dimmed and contains several key performance indicators (KPIs) and charts:

- WOs in Process:** 59
- WOs in Review:** 11
- Closed WOs:** 59
- Pending Tasks with Del:** 0
- Scheduled vs. Unplanned Tasks:** A donut chart showing 31.4% Planned Tasks (green) and 68.6% Unplanned Tasks (grey).
- Compliance Percentage:** 51.3% (blue donut chart)
- Failures that Caused Damage:** 4
- Currently stopped assets:** 59
- Planned downtimes:** 59
- Unplanned downtimes:** 24

The search overlay, titled "Search by Assets", is highlighted with a red border and contains the following asset list:

- CENTRO COMERCIAL EL TESORO { CC-TER }**
  - Type: Locations
  - Code: CC-TER
  - Priority:
  - Location: //
- EL CORRAL { ELCO-ELTE-01 }**
  - Type: Locations
  - Code: ELCO-ELTE-01
  - Priority:
  - Location: // Empresa Matriz/
- { HOR-01 } HORNO 01**
  - Type: Equipment
  - Code: HOR-01
  - Priority: High
  - Location: // Empresa Matriz/ EL CORRAL/
- { HOR-02 } HORNO 02 ATLAS COPCO**
  - Type: Equipment
  - Code: HOR-02
  - Priority:
  - Location: // Empresa Matriz/ EL CORRAL/
- { HOR-03 } HORNO 03 ATLAS COPCO**
  - Type: Equipment
  - Code: HOR-03
  - Priority:
  - Location: // Empresa Matriz/ EL CORRAL/

At the bottom of the search overlay, it says "Showing 25 of 6074".

Finally, by selecting the asset in question, the system updates and adjusts all the information contained in the Dashboard according to the selected asset.

From - Until  
2023-03-15 / 2024-03-15

Is part of  
{ ROB-0001 } ROBO - 0001 FANUC

0  
WOs in Process

0  
WOs in Review

0  
Closed WOs

0  
Pending Tasks with Delay

Work Orders

No data to show with these parameters

Scheduled vs. Unplanned Tasks

No data to show with these parameters

Compliance Percentage

0.0%

Work Requests

Status	Count
Created	5
Solved	4

0  
Failures that Caused Damage

0  
Currently stopped assets

0  
Planned downtimes

0  
Unplanned downtimes