

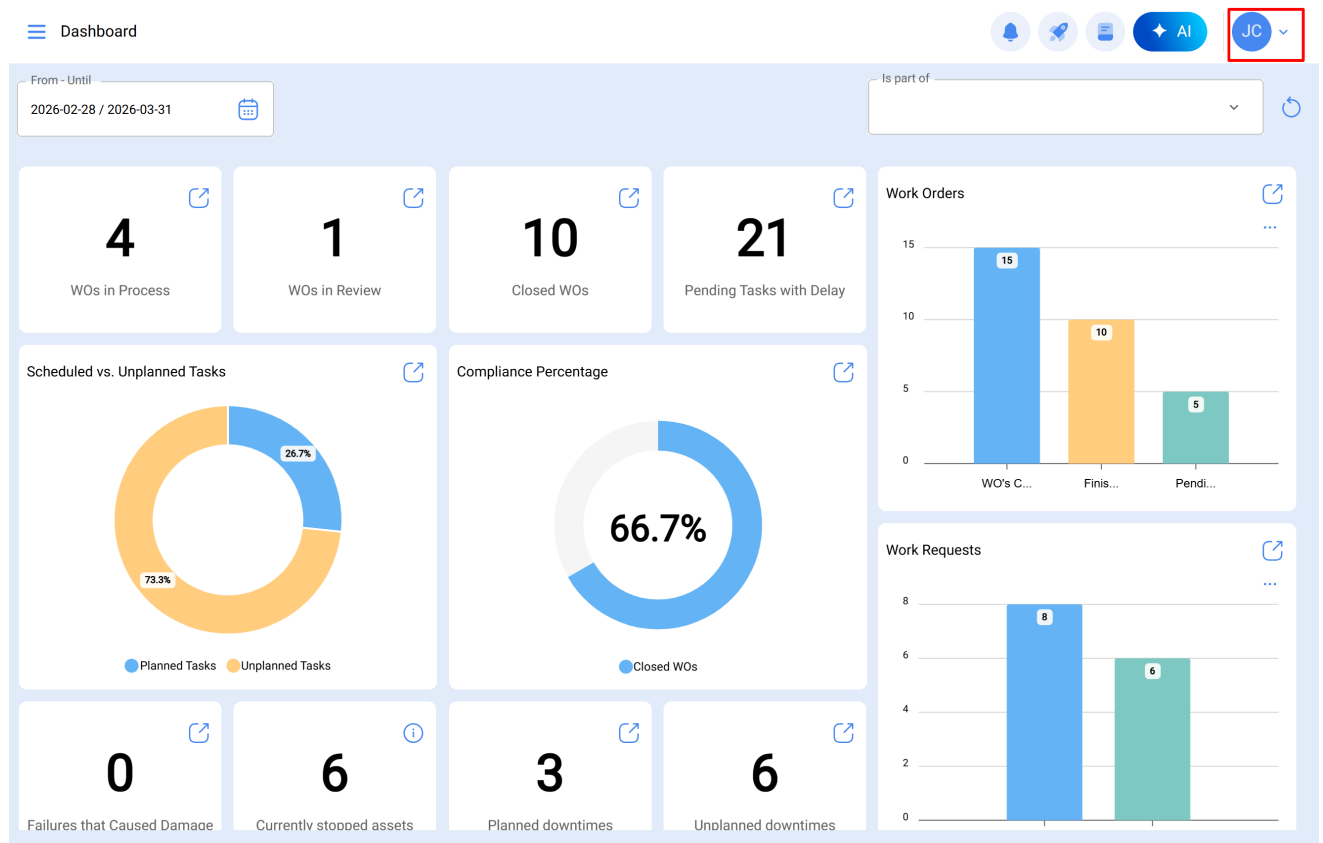
# Configuración de idiomas mediante traducción dinámica

[help.fractal.com/hc/es-es/articles/44728517492109-Configuración-de-idiomas-mediante-traducción-dinámica](https://help.fractal.com/hc/es-es/articles/44728517492109-Configuración-de-idiomas-mediante-traducción-dinámica)

Los usuarios de Fractal One tienen la posibilidad de gestionar el idioma del software conforme a sus requerimientos, ya sea seleccionando uno de los idiomas disponibles o solicitando la incorporación de una nueva traducción. Gracias al add-on de **traducción dinámica**, la plataforma se adapta de manera eficiente a distintos contextos lingüísticos, optimizando su integración en entornos multinacionales y equipos de trabajo diversos.

Para gestionar el idioma en Fractal One:

1. Acceda al menú de opciones ubicado en la parte superior derecha de la plataforma.



## 2. Ingrese a la opción **Lenguaje**.

The screenshot shows a dashboard interface with a user menu open in the top right corner. The menu is for user 'JC' and contains the following items: Settings, Language (highlighted with a red box), Dark Mode (with a toggle switch), Help and Technical Support, Change company, and Log out. The dashboard itself features several widgets: four KPI cards at the top (4 WOs in Process, 1 WOs in Review, 10 Closed WOs, 21 Pending Tasks with Delay), two donut charts (Scheduled vs. Unplanned Tasks and Compliance Percentage), and four KPI cards at the bottom (0 Failures that Caused Damage, 6 Currently stooped assets, 3 Planned downtimes, 6 Unplanned downtimes). On the right side, there are two bar charts: 'Work Orders' and 'Work Requests'.

Dashboard Overview:

- From - Until: 2026-02-28 / 2026-03-31
- WOs in Process: 4
- WOs in Review: 1
- Closed WOs: 10
- Pending Tasks with Delay: 21
- Scheduled vs. Unplanned Tasks: 73.3% Planned Tasks, 26.7% Unplanned Tasks
- Compliance Percentage: 66.7% Closed WOs
- Failures that Caused Damage: 0
- Currently stooped assets: 6
- Planned downtimes: 3
- Unplanned downtimes: 6

User Menu (JC):

- Settings
- Language
- Dark Mode
- Help and Technical Support
- Change company
- Log out

3. En la sección **Idiomas disponibles**, seleccione el idioma que desea utilizar en la plataforma.

The image shows a dashboard with various metrics and a 'Language settings' overlay. The dashboard includes:

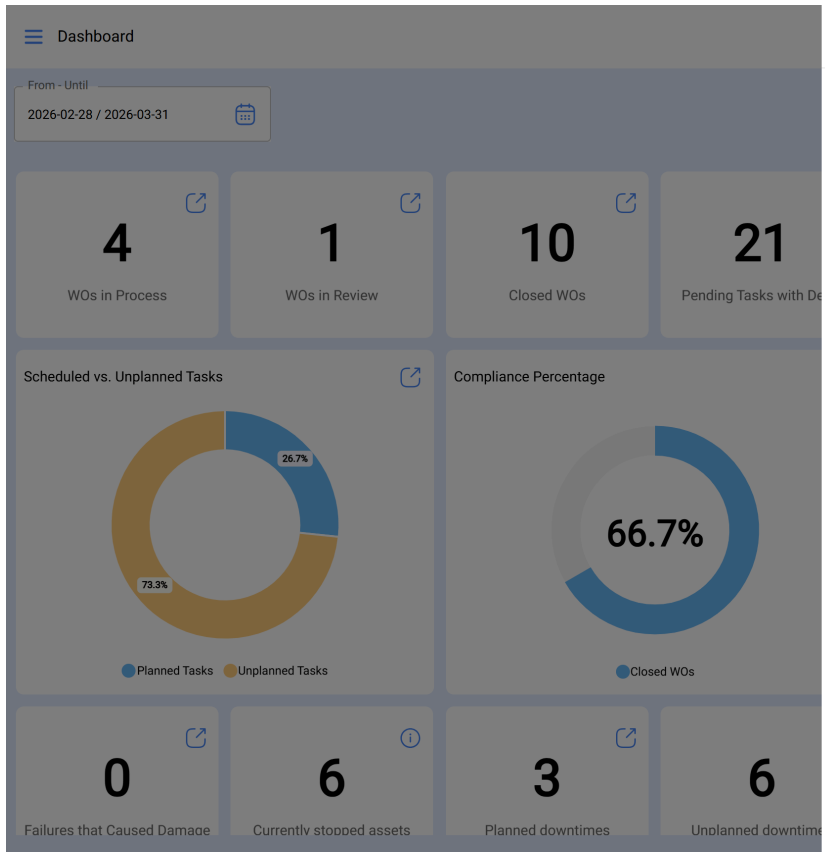
- Dashboard header with a menu icon and 'Dashboard' text.
- Date range: 'From - Until' 2026-02-28 / 2026-03-31.
- Four summary cards: '4 WOs in Process', '1 WOs in Review', '10 Closed WOs', and '21 Pending Tasks with De'.
- Two donut charts: 'Scheduled vs. Unplanned Tasks' (73.3% Planned, 26.7% Unplanned) and 'Compliance Percentage' (66.7% Closed WOs).
- Four bottom cards: '0 Failures that Caused Damage', '6 Currently stooped assets', '3 Planned downtimes', and '6 Unplanned downtime'.

The 'Language settings' overlay on the right includes:

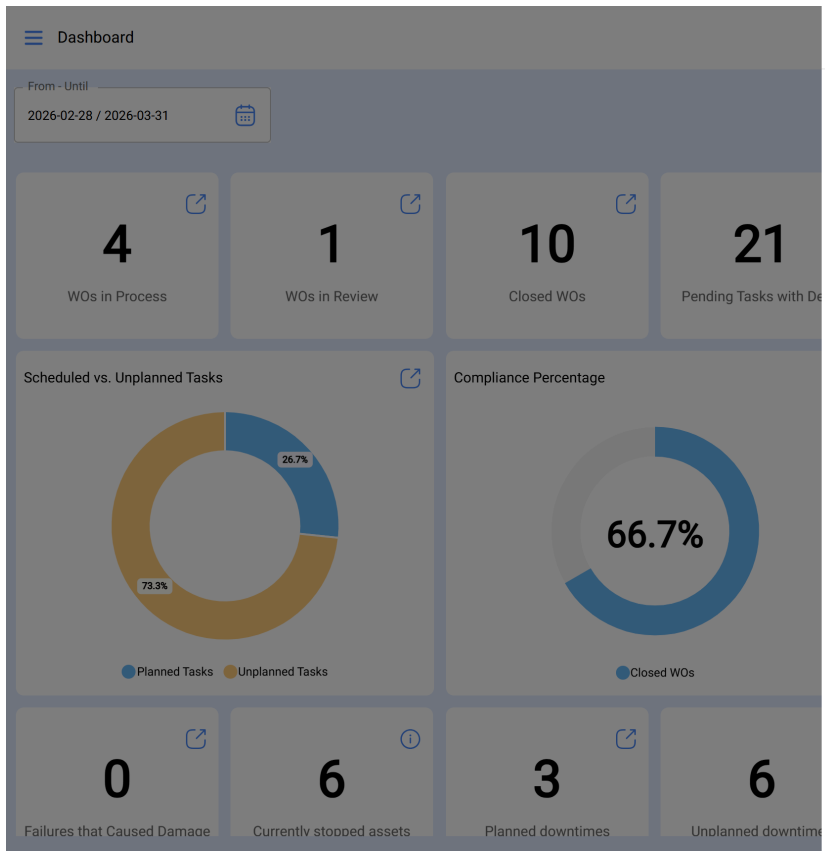
- Back arrow and 'Language settings' title.
- 'Available languages' section with a dropdown menu currently showing 'English'.
- 'Add a new language' section with a text input field and a dropdown arrow.

Adicionalmente, si el idioma requerido no se encuentra en la lista:

4. En la sección **Agregar un nuevo idioma**, seleccione el idioma que desea habilitar.

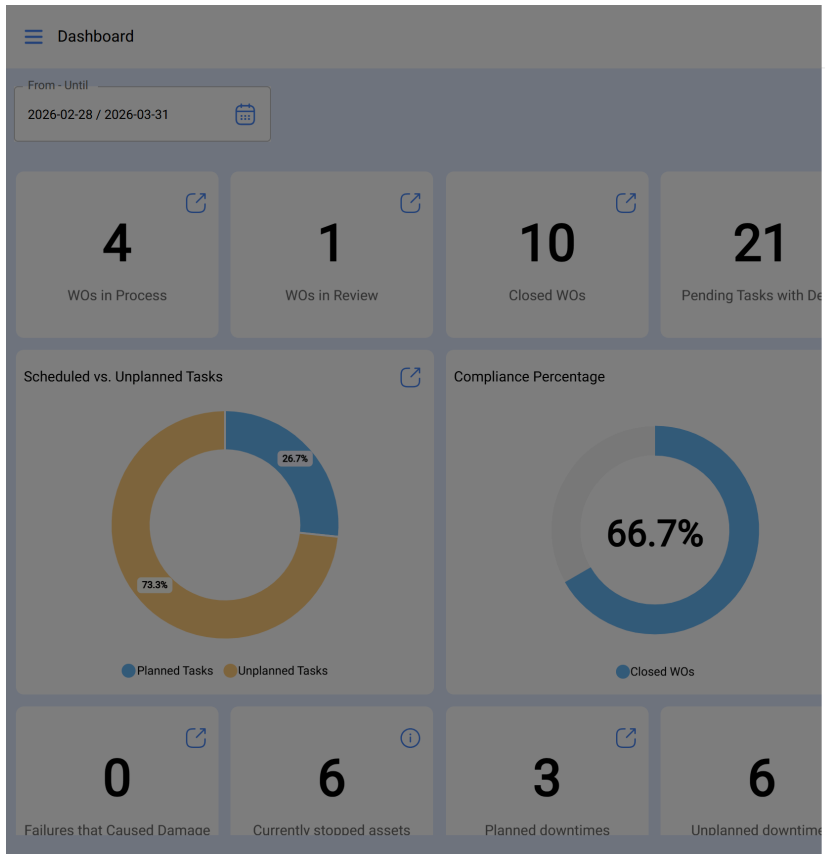



The 'Language settings' panel shows the current language set to 'English'. A red box highlights the 'Add a new language' section, which includes a dropdown menu for selecting a new language to be added to the platform's list.



The 'Language settings' panel now displays a scrollable list of available languages, including: Abkhazian, Acehnese, Acoli, Afrikaans, Shqip, Alz, አማርኛ, Հայերեն, অসমীয়া, Awadhi, Aymara, Azərbaycan, Balinese, Bamanakan, Bashkir, Btx, Bts, Batak Toba, Беларуская, Ichibemba, and বাংলা.

5. Haz clic en **Guardar** para finalizar la acción.



← Language settings 

**Available languages**  
Choose which language to use for the Fractal platform.

Select language

---

**Add a new language**  
Select the language you need and it will be automatically added to the list of available languages.

Add a new language

6. El sistema iniciará automáticamente el proceso de generación del idioma y, una vez completado, este será incorporado en la lista de idiomas disponibles para su selección.

Dashboard

From - Until  
2026-02-28 / 2026-03-31

4 WOs in Process

1 WOs in Review

10 Closed WOs

21 Pending Tasks with De

Scheduled vs. Unplanned Tasks

Compliance Percentage

66.7%

0 Failures that Caused Damage

Currently sto

Language settings

Available languages

Choose which language to use for the Fractal platform.

Select language

English

Add a new language

Select the language you need and it will be automatically added to the list of available languages.

Add a new language

Afrikaans

Request sent. We are preparing the language and it may take a few minutes. We will notify you by email when it is ready.

Una vez concluido el proceso, se enviará una notificación por correo electrónico confirmando la finalización de la operación.

F

Fractal <no-reply@fractal.com>



### Language available

Hello Jonas,

Your request for generating **Balinese language** from Language Settings has been completed successfully.

You can now select the new language and start using it on Fractal.

[Go to Language Settings](#)

If you have any questions or need further assistance, feel free to write to us at [support@fractal.com](mailto:support@fractal.com).

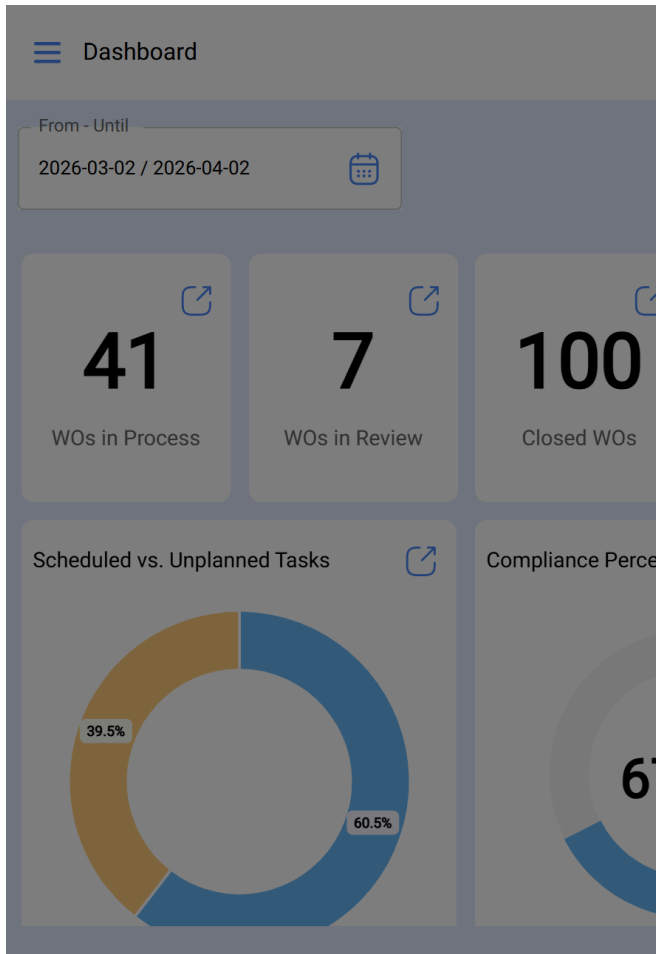


You are receiving this email because you are an active [app.fractal.com](http://app.fractal.com) user.

Copyright 2026 Fractal

**Nota:** El correo electrónico será enviado únicamente al solicitante del idioma y puede tardar algunos minutos en completarse su envío.

Cada vez que se añade un nuevo idioma de manera efectiva, este aparecerá visible para todos los usuarios de esta base, acompañado de un icono que indicará que dicho idioma está disponible para su uso en la plataforma.



← Language settings



- Español
- Español (Latinoamérica)
- Euskera
- Français
- Galego
- Guarani
- Italiano
- Nederlands
- Polski
- Português (BR)
- Português (EU)
- Română
- Slovenčina
- Tsonga
- Tswana