

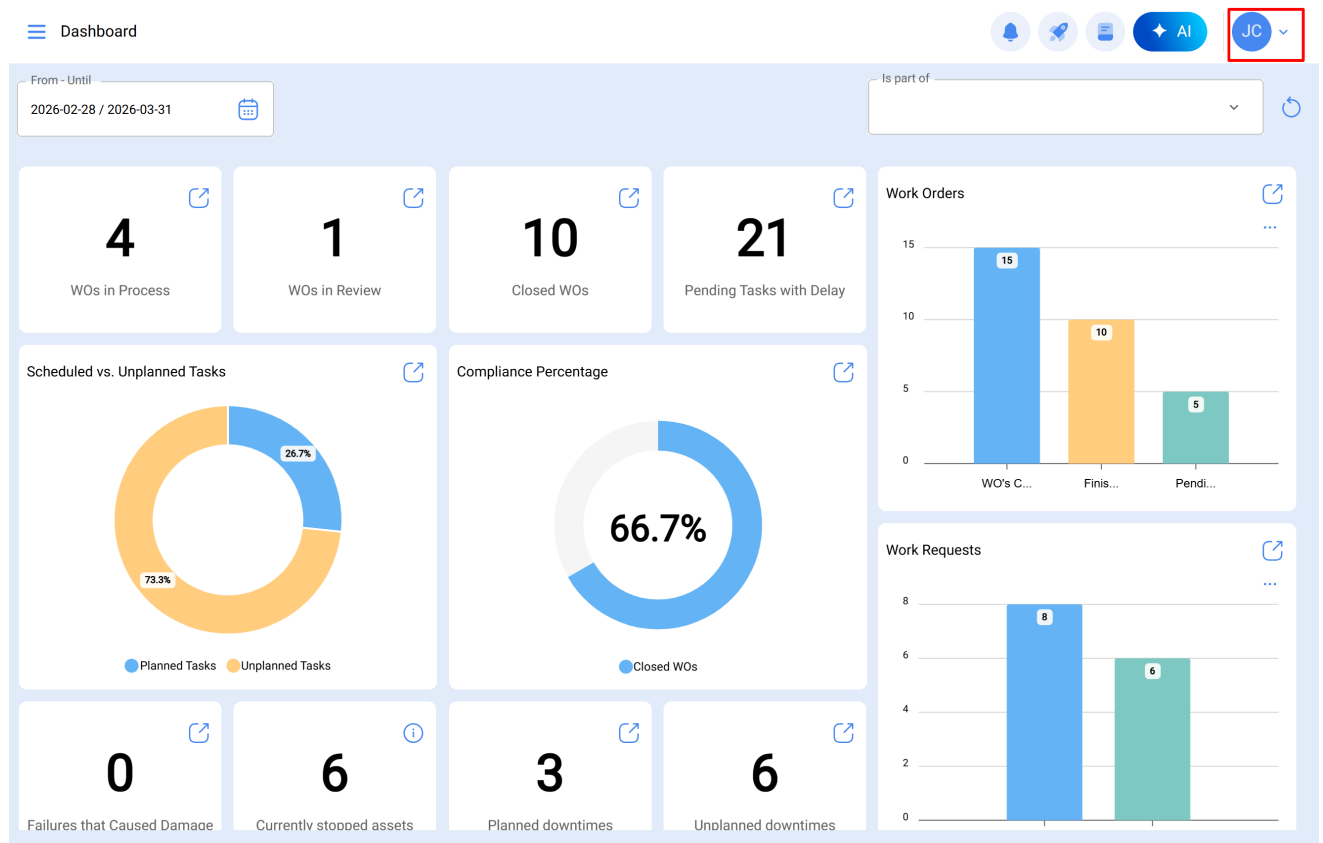
Configuration des langues via traduction dynamique

help.fracttal.com/hc/fr/articles/44728517492109-Configuration-des-langues-via-traduction-dynamique

Les utilisateurs de Fracttal One ont la possibilité de gérer la langue du logiciel selon leurs besoins, soit en sélectionnant l'une des langues disponibles, soit en demandant l'ajout d'une nouvelle traduction. Grâce à l'add-on de **traduction dynamique**, la plateforme s'adapte efficacement à différents contextes linguistiques, optimisant ainsi son intégration dans des environnements multinationaux et des équipes de travail diverses.

Pour gérer la langue dans Fracttal One :

1. Accédez au menu des options situé en haut à droite de la plateforme.



2. Entrez dans l'option **Langue**.

The screenshot shows a dashboard interface with a user menu open in the top right corner. The user menu is for a user named 'JC' and contains the following options: Settings, Language (highlighted with a red box), Dark Mode (with a toggle switch), Help and Technical Support, Change company, and Log out. The dashboard itself features several widgets: a date range selector (2026-02-28 / 2026-03-31), four KPI cards (4 WOs in Process, 1 WOs in Review, 10 Closed WOs, 21 Pending Tasks with Delay), two donut charts (Scheduled vs. Unplanned Tasks and Compliance Percentage), and four more KPI cards (0 Failures that Caused Damage, 6 Currently stooped assets, 3 Planned downtimes, 6 Unplanned downtimes). On the right side, there are two bar charts: 'Work Orders' and 'Work Requests'.

Dashboard Overview:

- From - Until: 2026-02-28 / 2026-03-31
- WOs in Process: 4
- WOs in Review: 1
- Closed WOs: 10
- Pending Tasks with Delay: 21
- Scheduled vs. Unplanned Tasks: 73.3% Planned Tasks, 26.7% Unplanned Tasks
- Compliance Percentage: 66.7% Closed WOs
- Failures that Caused Damage: 0
- Currently stooped assets: 6
- Planned downtimes: 3
- Unplanned downtimes: 6

Work Orders Bar Chart:

| Category | Value |
|-----------|-------|
| WO's C... | 18 |
| Finis... | 1 |
| Pendi... | 1 |

Work Requests Bar Chart:

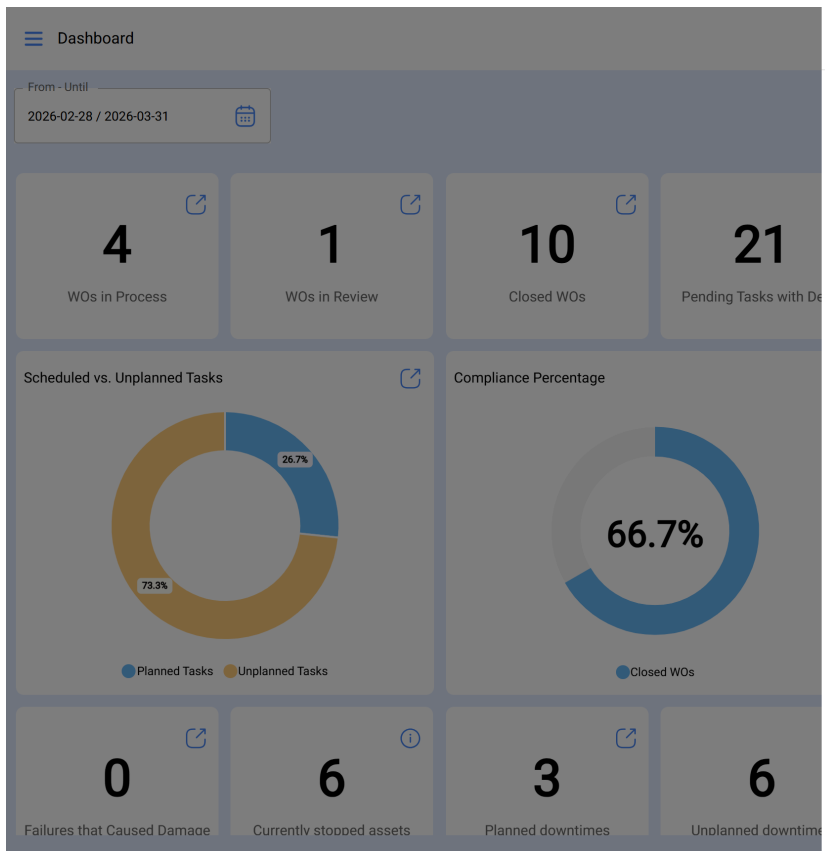
| Category | Value |
|------------|-------|
| Category 1 | 8 |
| Category 2 | 6 |

3. Dans la section **Langues disponibles**, sélectionnez la langue que vous souhaitez utiliser sur la plateforme.

The image shows a dashboard with several key performance indicators (KPIs) and charts. The KPIs are: 4 WOs in Process, 1 WOs in Review, 10 Closed WOs, and 21 Pending Tasks with De. The charts are: 'Scheduled vs. Unplanned Tasks' (73.3% Planned Tasks, 26.7% Unplanned Tasks) and 'Compliance Percentage' (66.7% Closed WOs). The language settings panel on the right shows 'English' selected in the 'Available languages' dropdown.

De plus, si la langue requise ne figure pas dans la liste :

4. Dans la section **Ajouter une nouvelle langue**, sélectionnez la langue que vous souhaitez activer.



← Language settings

Available languages

Choose which language to use for the Fractal platform.

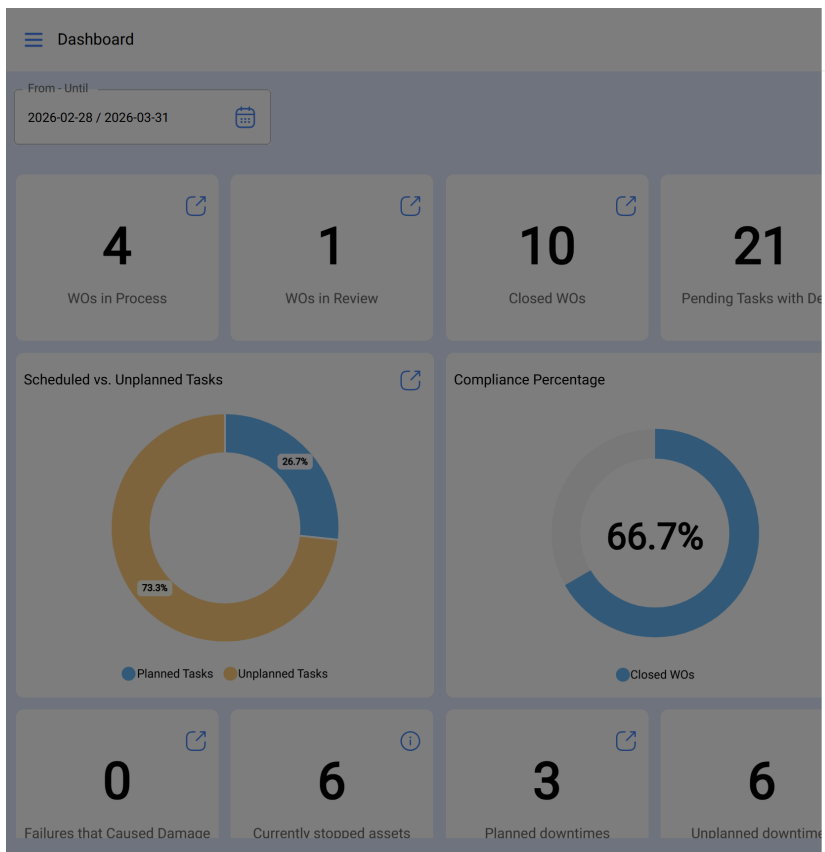
Select language

English

Add a new language

Select the language you need and it will be automatically added to the list of available languages.

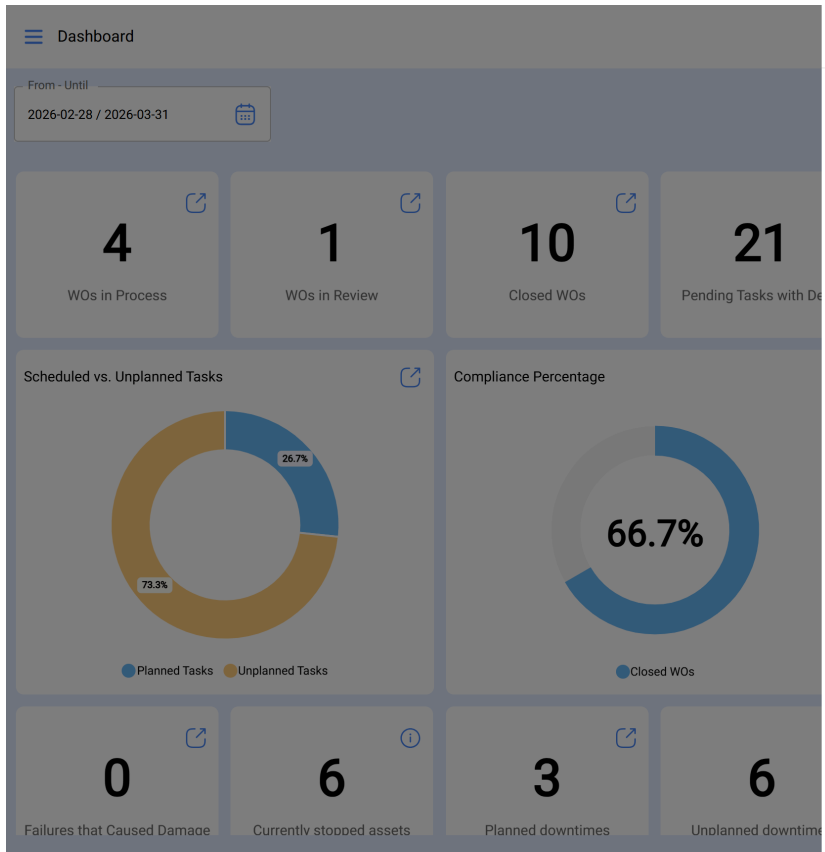
Add a new language



← Language settings

- Abkhazian
- Acehnese
- Acoli
- Afrikaans
- Shqip
- Alz
- አማርኛ
- Հայերեն
- অসমীয়া
- Awadhi
- Aymara
- Azerbaijani
- Balinese
- Bamanakan
- Bashkir
- Btx
- Bts
- Batak Toba
- Беларуская
- Ichibemba
- বাংলা

5. Cliquez sur **Enregistrer** pour finaliser l'action.



Language settings

Available languages

Choose which language to use for the Fractal platform.

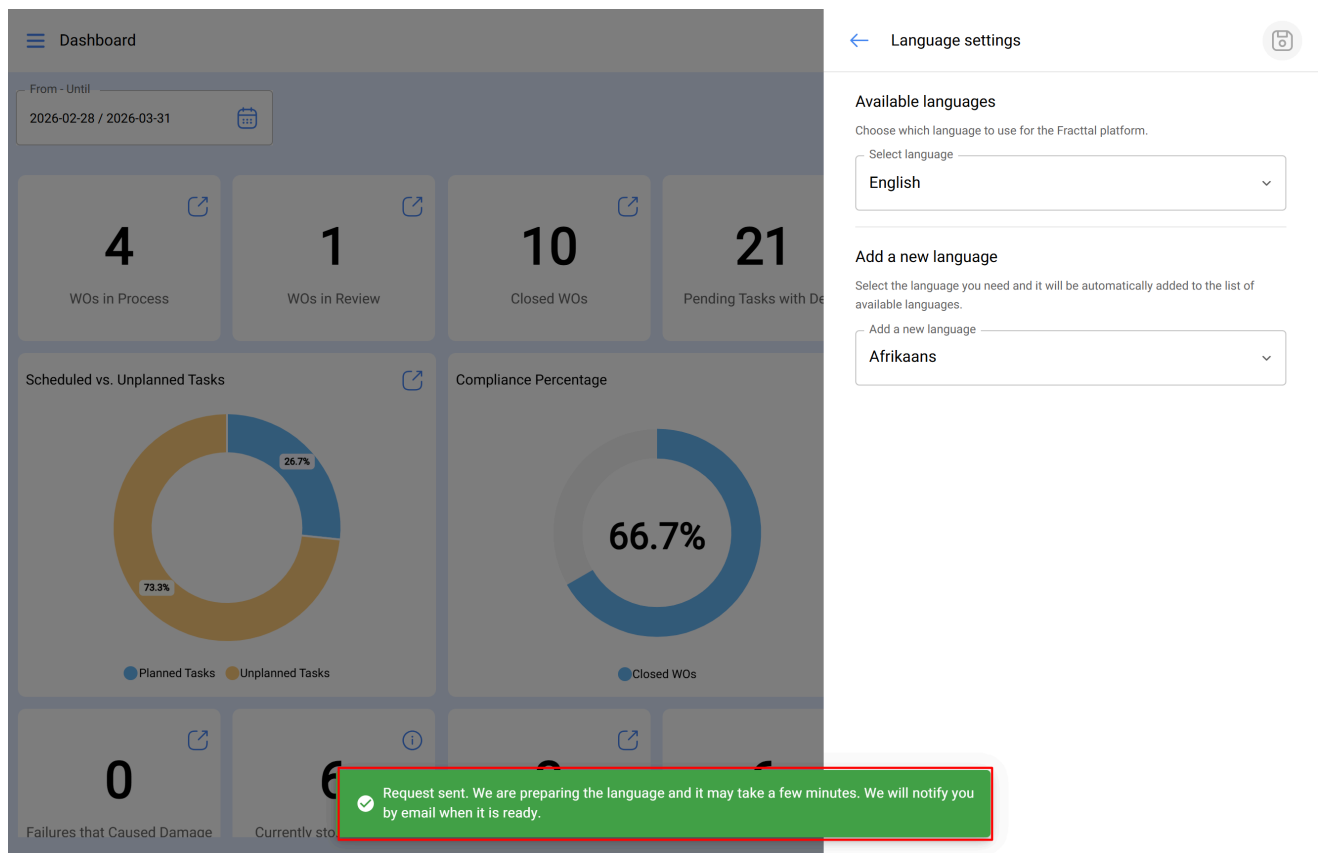
Select language: English

Add a new language

Select the language you need and it will be automatically added to the list of available languages.

Add a new language: Afrikaans

6. Le système lancera automatiquement le processus de génération de la langue et, une fois terminé, celle-ci sera ajoutée à la liste des langues disponibles pour sélection.



Dashboard

From - Until
2026-02-28 / 2026-03-31

4 WOs in Process

1 WOs in Review

10 Closed WOs

21 Pending Tasks with De

Scheduled vs. Unplanned Tasks

26.7%

73.3%

Planned Tasks Unplanned Tasks

Compliance Percentage

66.7%

Closed WOs

0 Failures that Caused Damage

Currently sto

Language settings

Available languages

Choose which language to use for the Fractal platform.

Select language

English

Add a new language

Select the language you need and it will be automatically added to the list of available languages.

Add a new language

Afrikaans

Request sent. We are preparing the language and it may take a few minutes. We will notify you by email when it is ready.

Le système effectuera la traduction complète de la plateforme dans la langue sélectionnée et, une fois le processus terminé, une notification par e-mail sera envoyée pour confirmer la fin de l'opération.

F

Fractal <no-reply@fractal.com>



Language available

Hello Jonas,

Your request for generating **Balinese language** from Language Settings has been completed successfully.

You can now select the new language and start using it on Fractal.

[Go to Language Settings](#)

If you have any questions or need further assistance, feel free to write to us at support@fractal.com.

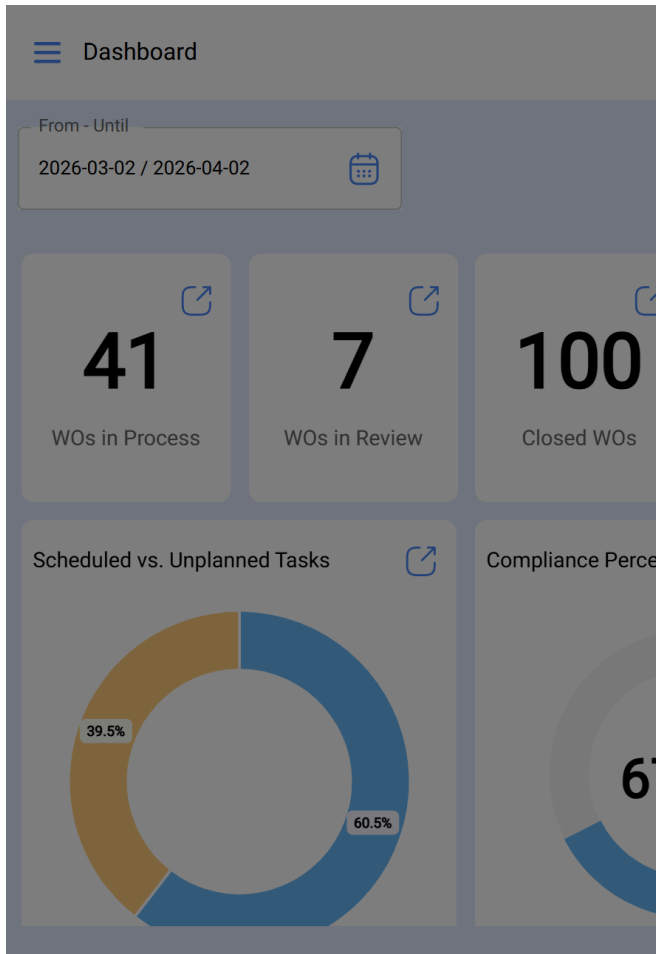


You are receiving this email because you are an active app.fractal.com user.

Copyright 2026 Fractal

Note : L'e-mail sera envoyé uniquement au demandeur de la langue et son envoi peut prendre quelques minutes.

Chaque fois qu'une nouvelle langue est ajoutée avec succès, elle apparaîtra visible pour tous les utilisateurs de cette base, accompagnée d'une icône indiquant que cette langue est disponible pour utilisation sur la plateforme.



← Language settings



- Español
- Español (Latinoamérica)
- Euskera
- Français
- Galego
- Guarani
- Italiano
- Nederlands
- Polski
- Português (BR)
- Português (EU)
- Română
- Slovenčina
- Tsonga
- Tswana