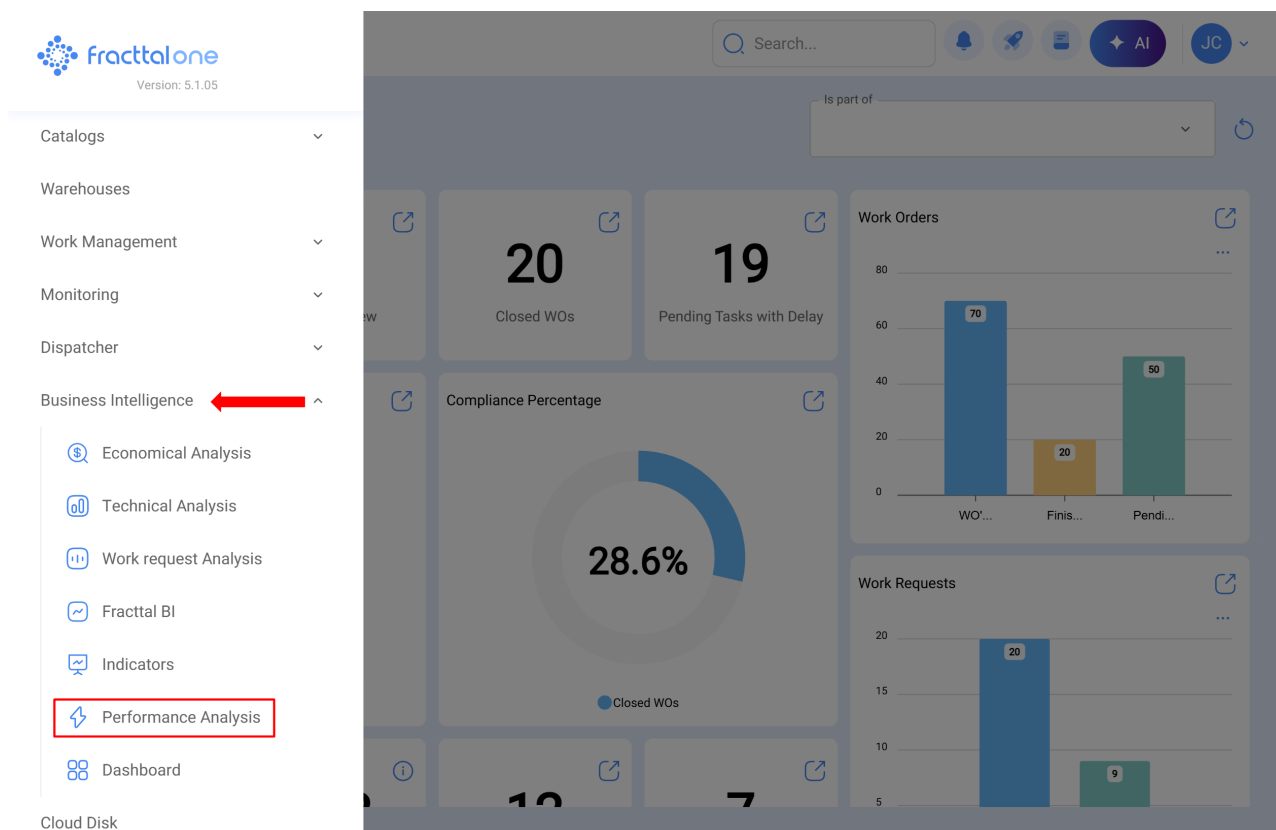


How to generate a performance report for my team in Fracttal One?

help.fracttal.com/hc/en-us/articles/38097009536397-How-to-generate-a-performance-report-for-my-team-in-Fracttal-One

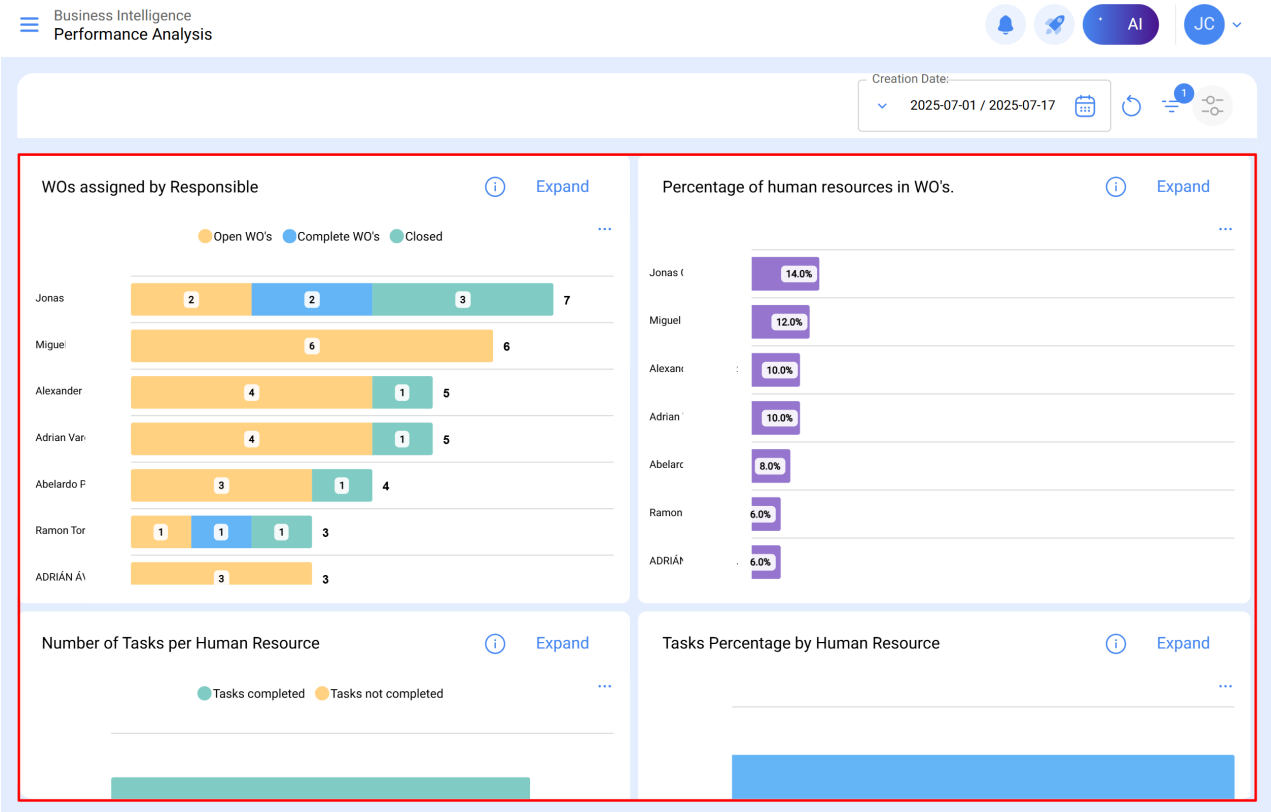
In **Fracttal One**, the **Business Intelligence** module allows you to generate **detailed reports** on your team's **performance**, facilitating the analysis of work orders and task distribution. The visual reports provide a clear view of operational effectiveness, helping to make informed decisions to optimize resource and task management.



Graphs to assess your team's performance

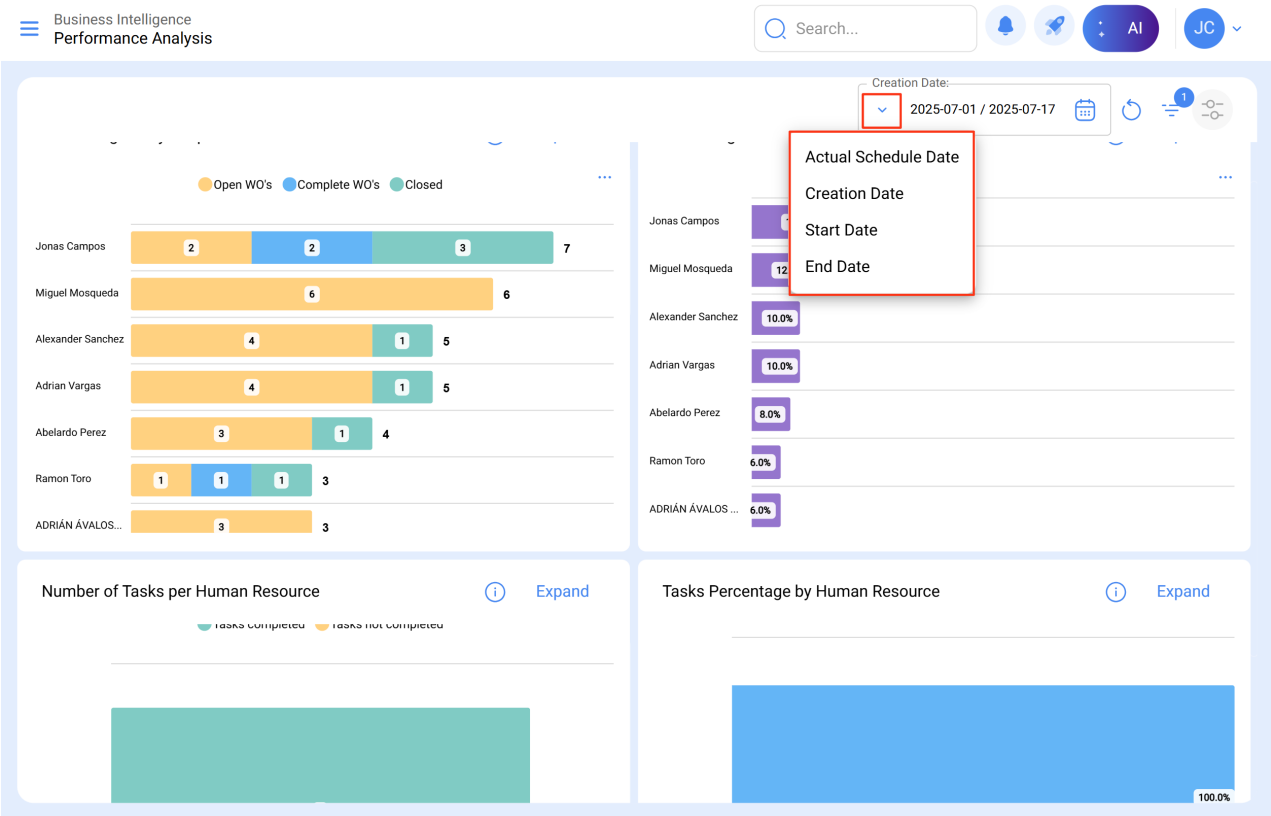
- 1. Work Orders by Responsible Person:** This bar chart shows how many work orders each responsible person has received and their distribution among the execution stages, allowing you to identify the workload and progress of each member.
- 2. Percentage of Work Orders by Responsible Person:** A percentage chart shows the percentage of work orders assigned to each responsible person, helping to detect overloads or inequalities in work distribution.
- 3. Number of Tasks by Human Resource:** This bar chart visualizes how many tasks each team member has assigned, showing the distribution of work.

4. **Percentage of Tasks by Human Resource:** A percentage chart reveals the proportion of work assigned to each member, facilitating the identification of imbalances and the need for task redistribution.



Analysis Parameters for More Accurate Information

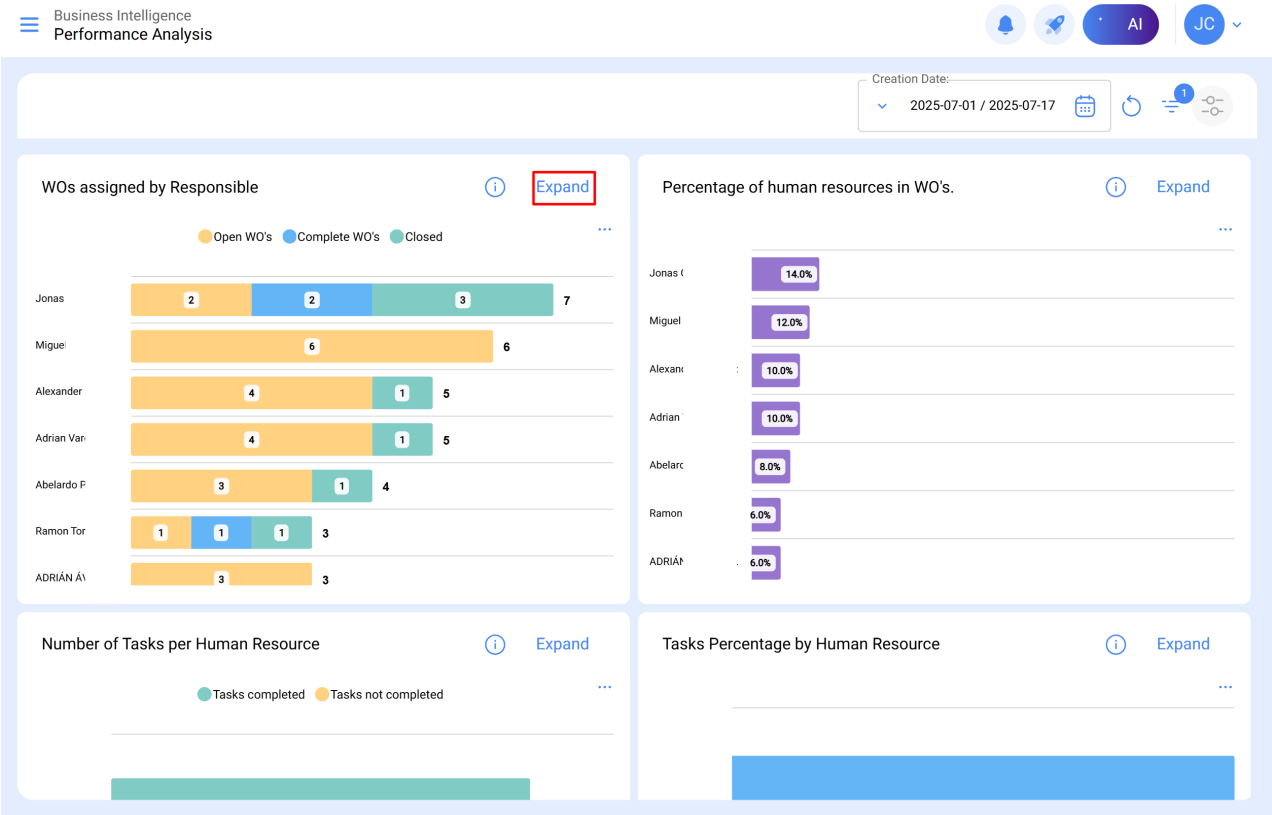
You can customize your analysis using filters such as the following dates:



- **Scheduled Date:** Shows the date when the task or activity was originally planned to be executed.
- **Creation Date:** Indicates the moment when the work order or task was created.
- **Start Date and End Date:** Allow you to analyze performance over a specific period, either at the start or end of the tasks.

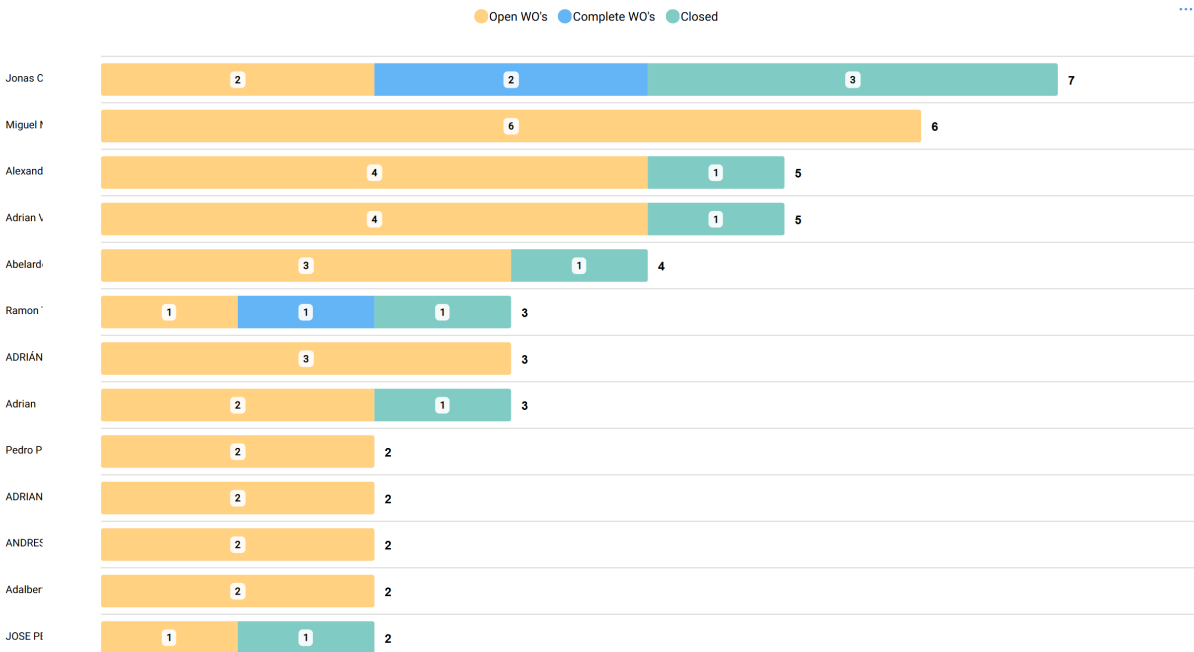
Accessing Graph Details

If you want a more detailed analysis, you can click on the **"View More"** button. By doing so, you will access a table with detailed information about the graphs, allowing you to examine the data more thoroughly.



Chart

Details

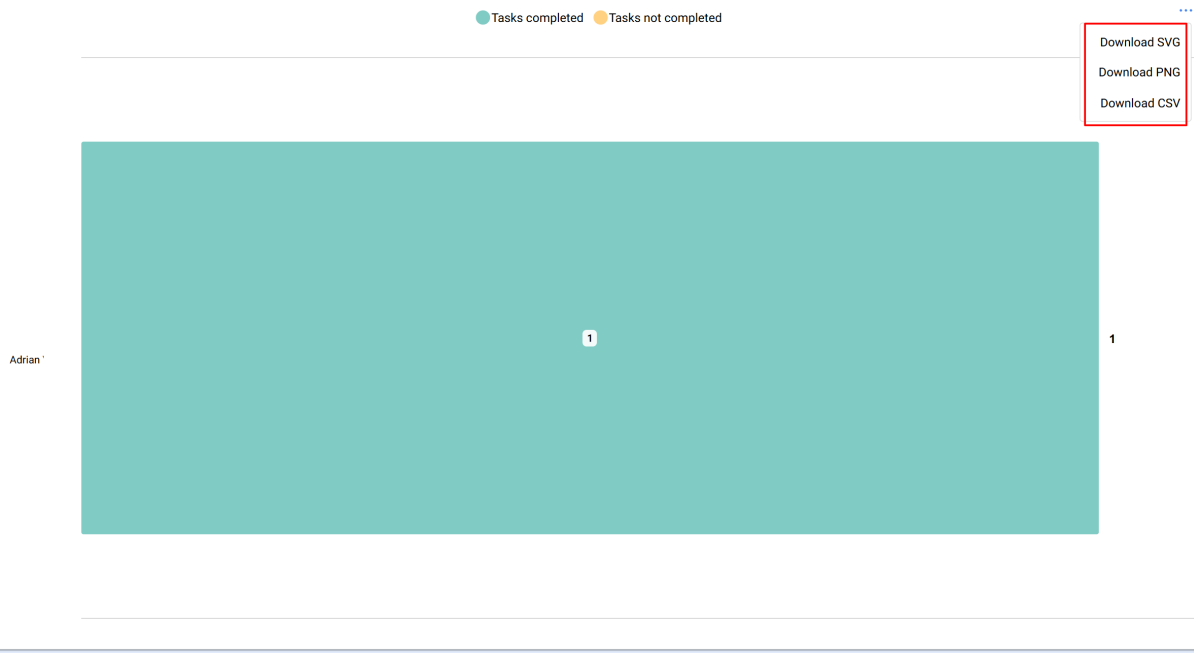


Report Details and Exporting

Additionally, the reports can be downloaded in **SVG**, **PNG**, or **CSV** formats, making them easier to use in presentations, further analysis, or integration with other tools.

Chart

Details



Related articles

[Where do I find the estimated task calendar that I had in Asset Cloud?](#)