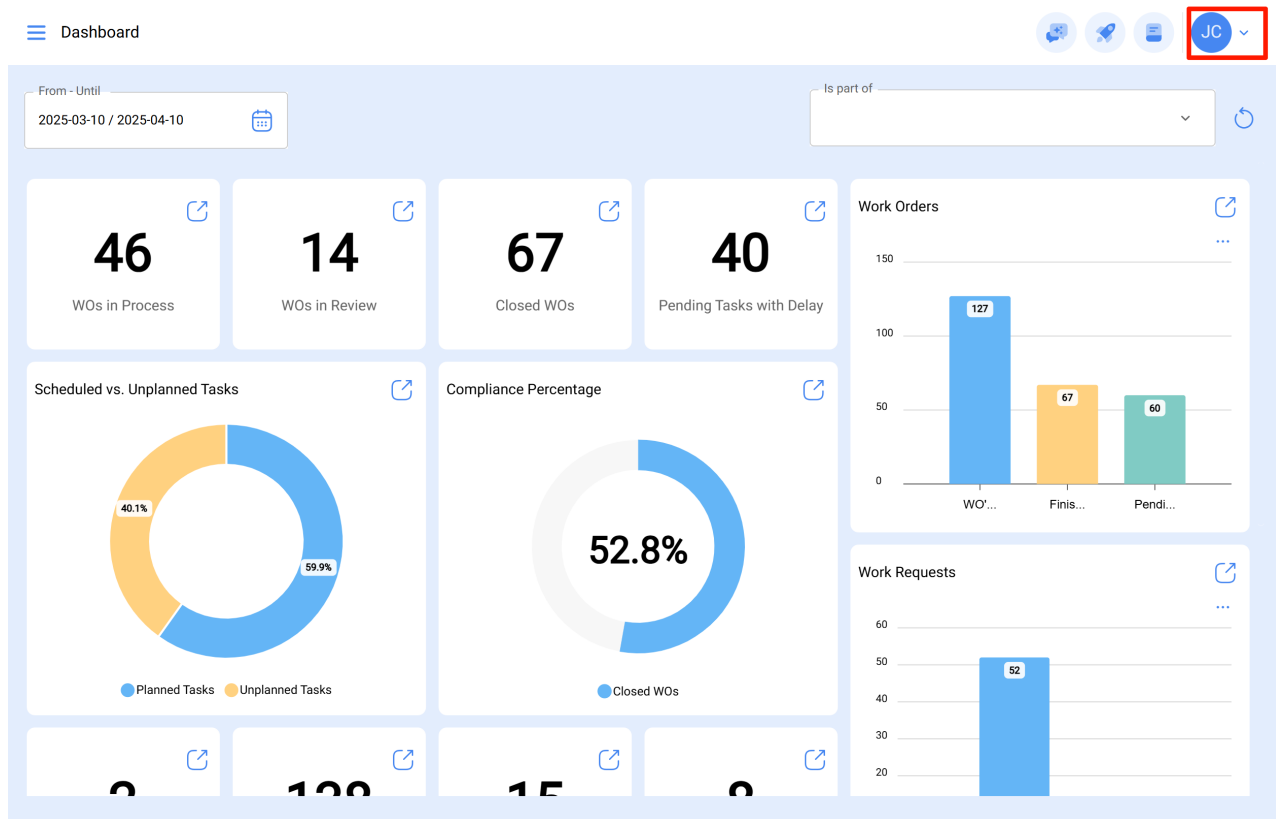
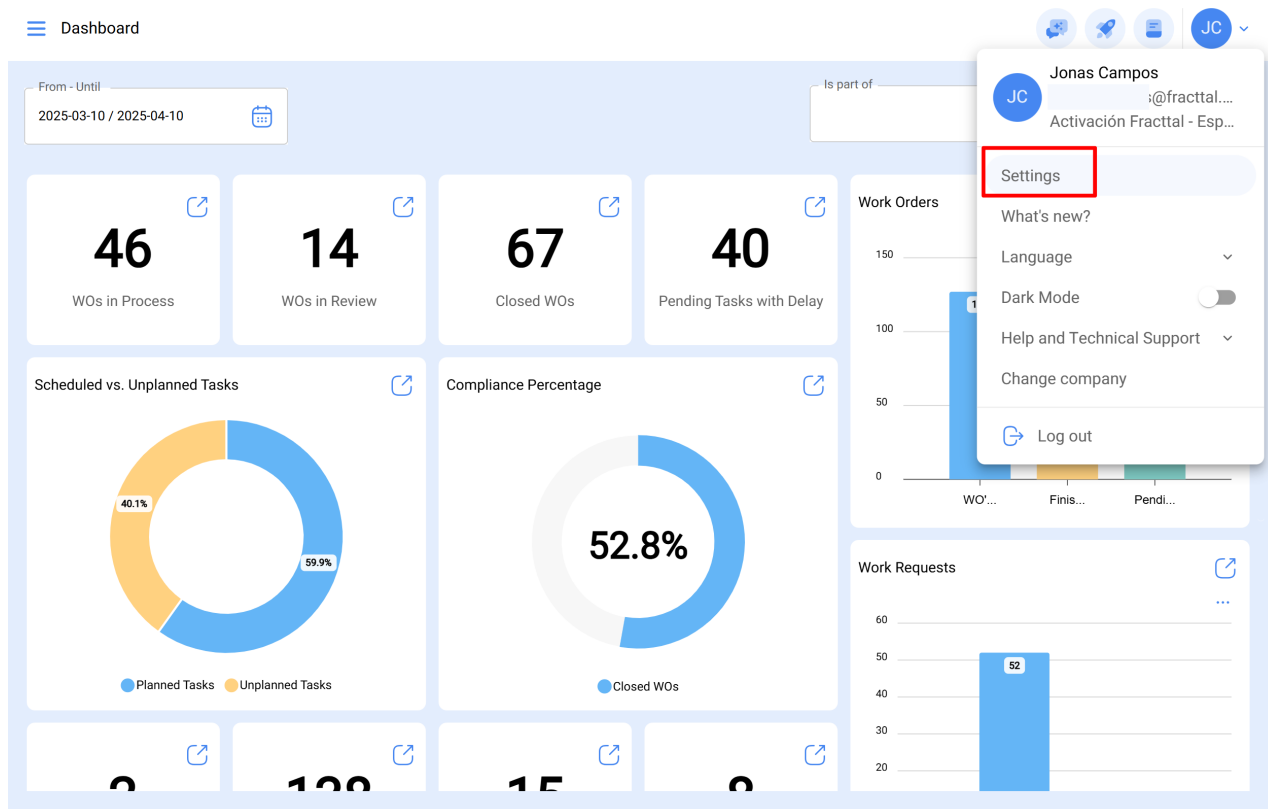


Auxiliary catalogs and their types

help.fractal.com/hc/en-us/articles/24933538423565-Auxiliary-catalogs-and-their-types

In this submodule you will find a consolidated view of the different catalogs used on the platform, where you can directly add, edit and disable any one of them according to the catalog they belong to.





Settings

Activación Fractal - Español - 477

Save

General

User Accounts

Business Calendar

Modules

Financial

Auxiliary Catalogs

Document Management

Transactions Log

Security

API Connections

Guest Portal

Account

Type

Catalogue of Failures

Failure Types

Failure Causes

Fault Detection

<input type="checkbox"/>	Description ↑
<input type="checkbox"/>	00-ELECTRICA
<input type="checkbox"/>	Alta temperatura
<input type="checkbox"/>	ar não gela
<input type="checkbox"/>	Atascamiento
<input type="checkbox"/>	Batería con voltaje bajo
<input type="checkbox"/>	CALENTAMIENTO DE MOTOR
<input type="checkbox"/>	CAVITATION
<input type="checkbox"/>	CAUSAS

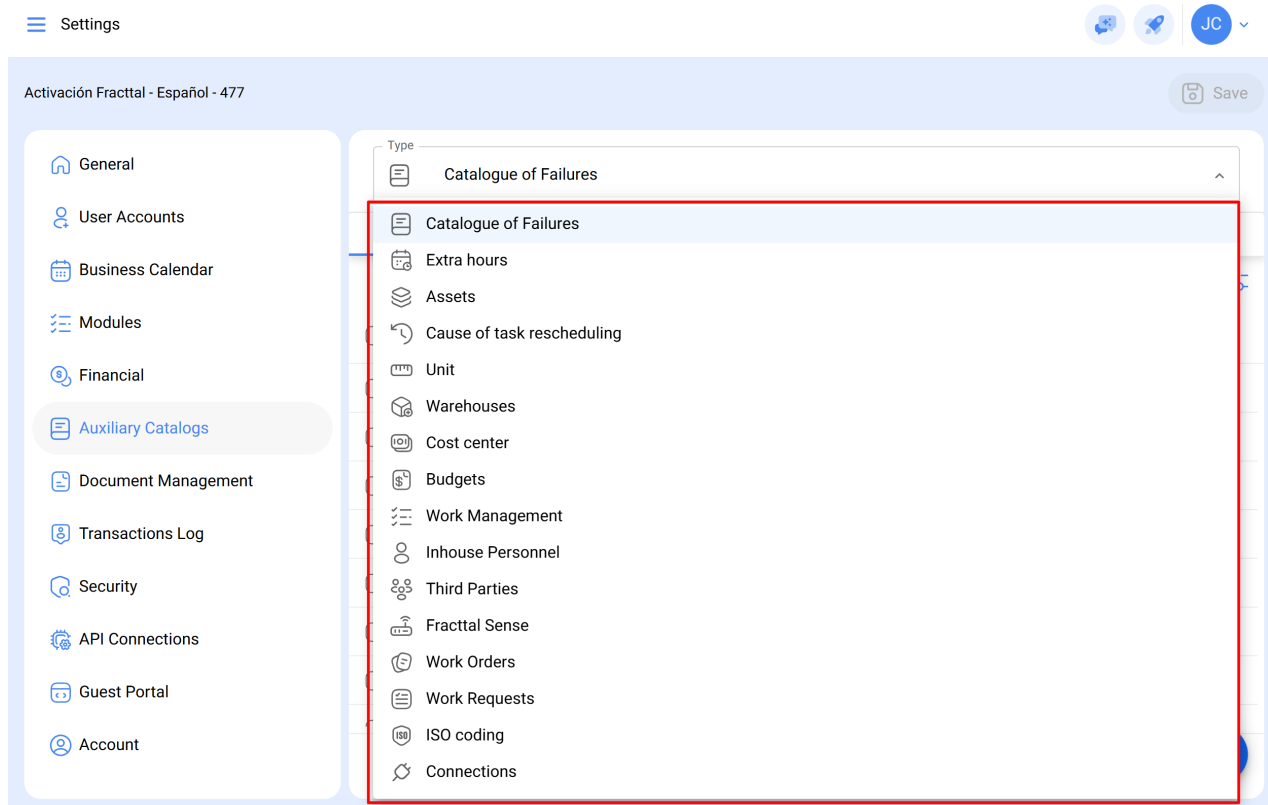
Showing 50 of 72

+

The settings page for 'Auxiliary Catalogs' is shown. The left sidebar contains various system settings, with 'Auxiliary Catalogs' highlighted. The main content area displays a 'Catalogue of Failures' with a table of predefined failure types. The table has columns for 'Failure Types', 'Failure Causes', and 'Fault Detection'. The first column contains checkboxes, and the second column contains descriptions. The table is currently showing 50 of 72 items.

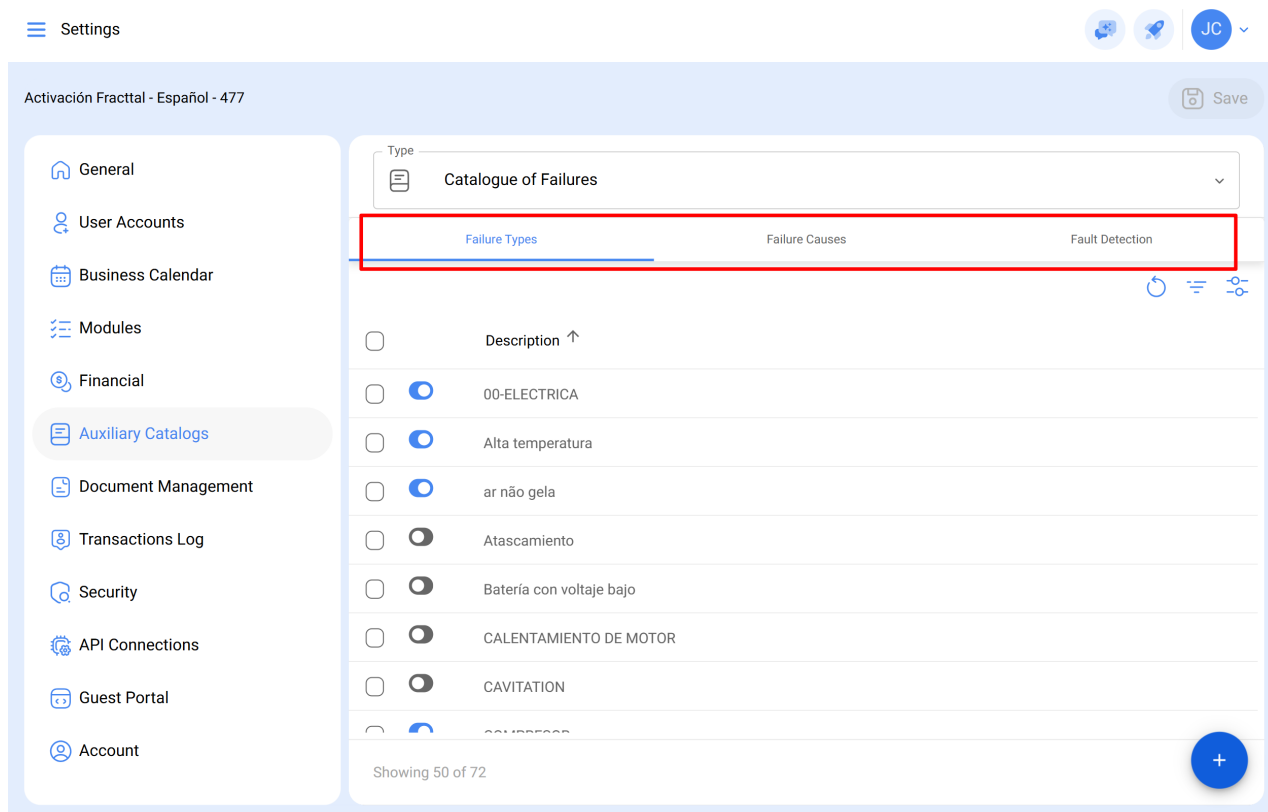
Note: The catalogs are listed with predefined options for certain processes within the platform, such as selecting the types of failures when completing a WO, types of assets that can be listed, units for defining mediation methods, etc.

Types of auxiliary catalogs



Below is a description of each of the catalogs in this submodule:

Failure Catalog: This catalog displays the types, causes, and methods of failure detection defined by each of the assets that make up your company.



- **Overtime Hours:** Here, you can define the various factors for which overtime hours (as a percentage) could be charged to the man-hours used in task execution.

- **Assets:** This catalog shows the types and classifications that can be assigned to the different assets registered in the database.
- **Task Rescheduling Cause:** This catalog allows you to observe and create different reasons why a task was rescheduled.
- **Unit:** A catalog where you can define the measurement units associated with your assets and various meters registered in the database.
- **Cost Center:** A catalog containing the different cost centers managed in the company.
- **Budget:** A catalog of the different budgets managed in the company.
- **Tasks:** This catalog displays the types and classifications that can be assigned to tasks associated with assets registered in the database.
- **Human Resources:** This catalog displays the profiles and ordinary hourly values that can be assigned to human resources registered in the database.
- **Third Parties:** A catalog with the different classifications assigned to third parties registered in the database.
- **Fracttal Sense:** A catalog with the different classifications that can be assigned to Fracttal Box (IoT) devices.
- **Work Orders:** This catalog allows you to observe and create different reasons why a work order may be canceled or paused.
- **Job Requests:** This catalog displays the groups, classifications, and keywords that can be used when registering a job request.
- **ISO Encoding:** This catalog allows you to define ISO codes, along with their revision numbers, so that some printed documents from the platform, such as Purchase Orders, Work Orders, Asset Catalogs, and Task Plans, can be visible.
- **Connections:** This catalog offers the possibility of defining communication protocols for other ERPs such as Fracttal OAuth 2, AWS S3, email, HTTP, or Google Sheets.