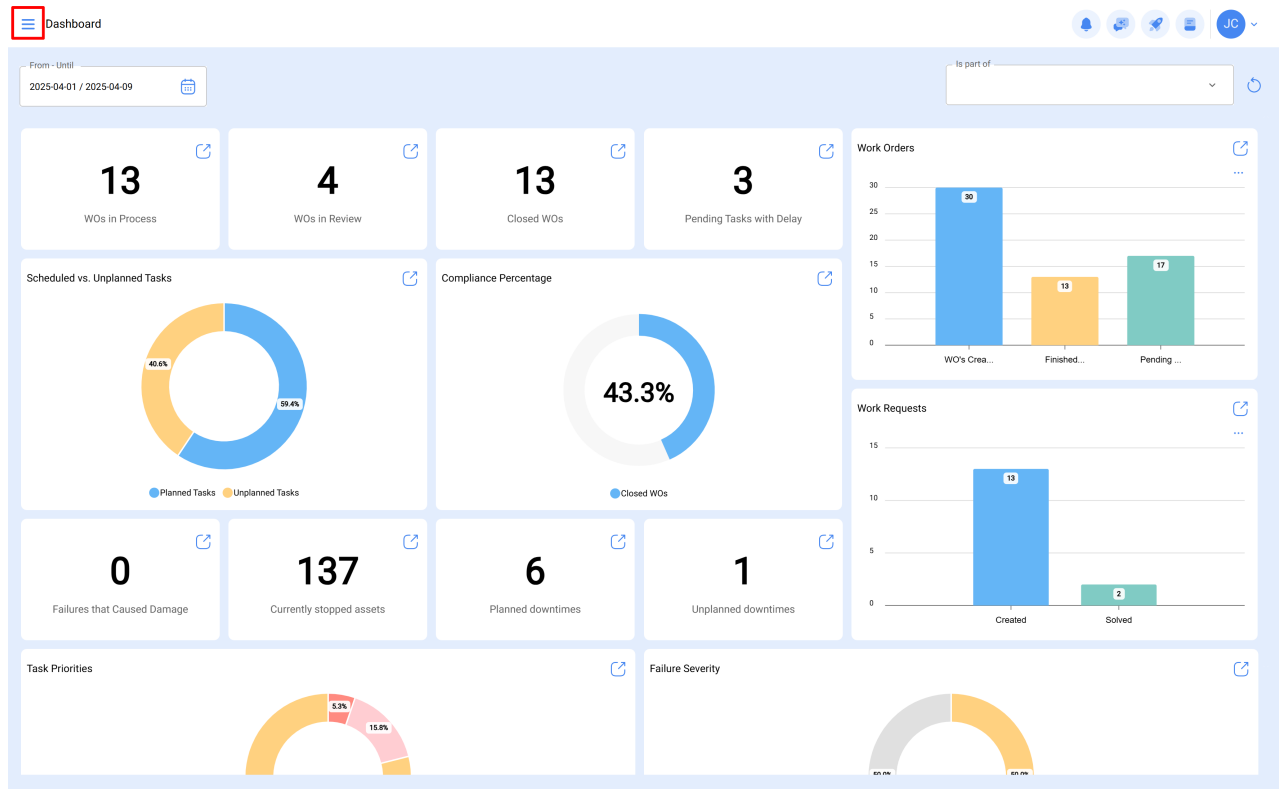


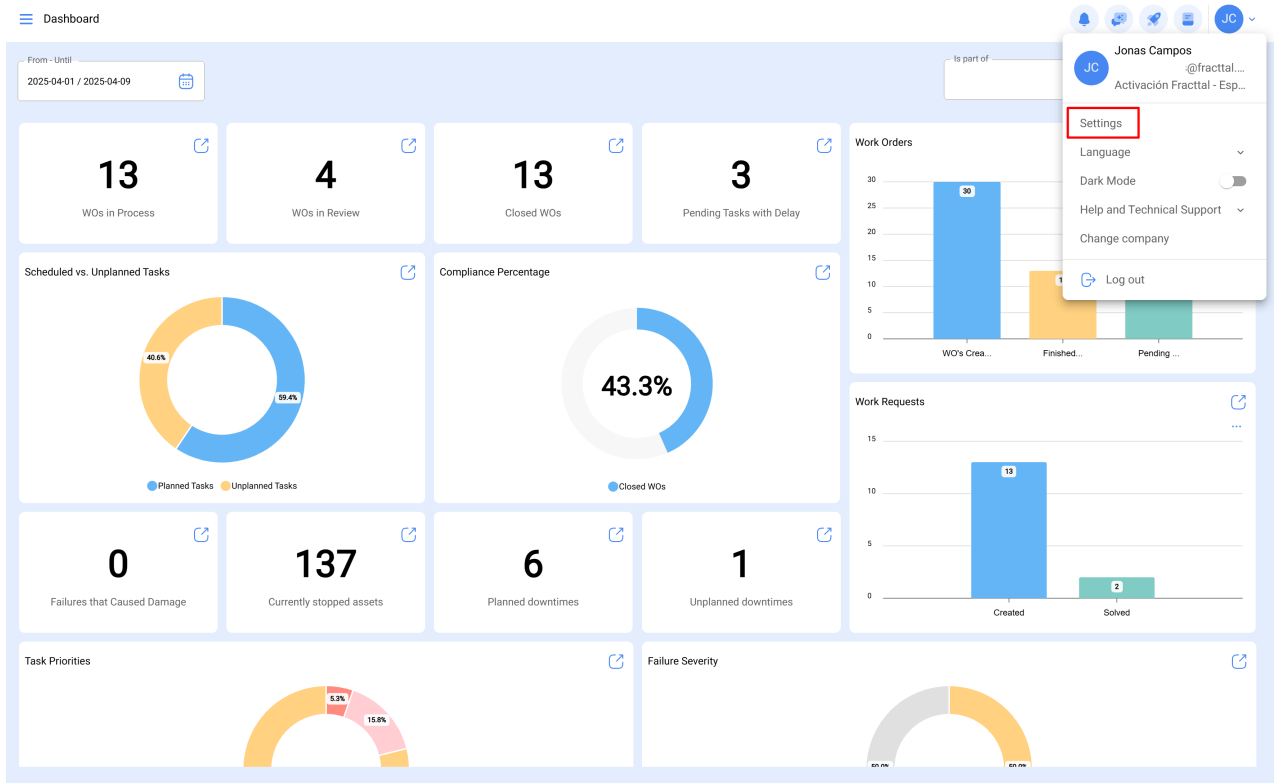
Warehouses

help.fracttal.com/hc/en-us/articles/25023050647693-Warehouses

To access the **Warehouse** module in **Fracttal One**, follow these steps:

From the **Dashboard**, go to the **Configuration** option in the main menu.





Then, select **Modules** and click on **Warehouses**.

The 'Settings' page shows the configuration for the 'Warehouses' module. The left sidebar lists various settings categories, with 'Modules' selected. The 'Warehouses' module is highlighted in the 'Modules' list.

The 'Warehouses' configuration page includes the following settings:

- Assets:** A dropdown menu showing 'Assets' selected.
- Work Orders:** A dropdown menu showing 'Work Orders' selected.
- Warehouses:** A dropdown menu showing 'Warehouses' selected (highlighted).
- Work Requests:** A dropdown menu showing 'Work Requests' selected.

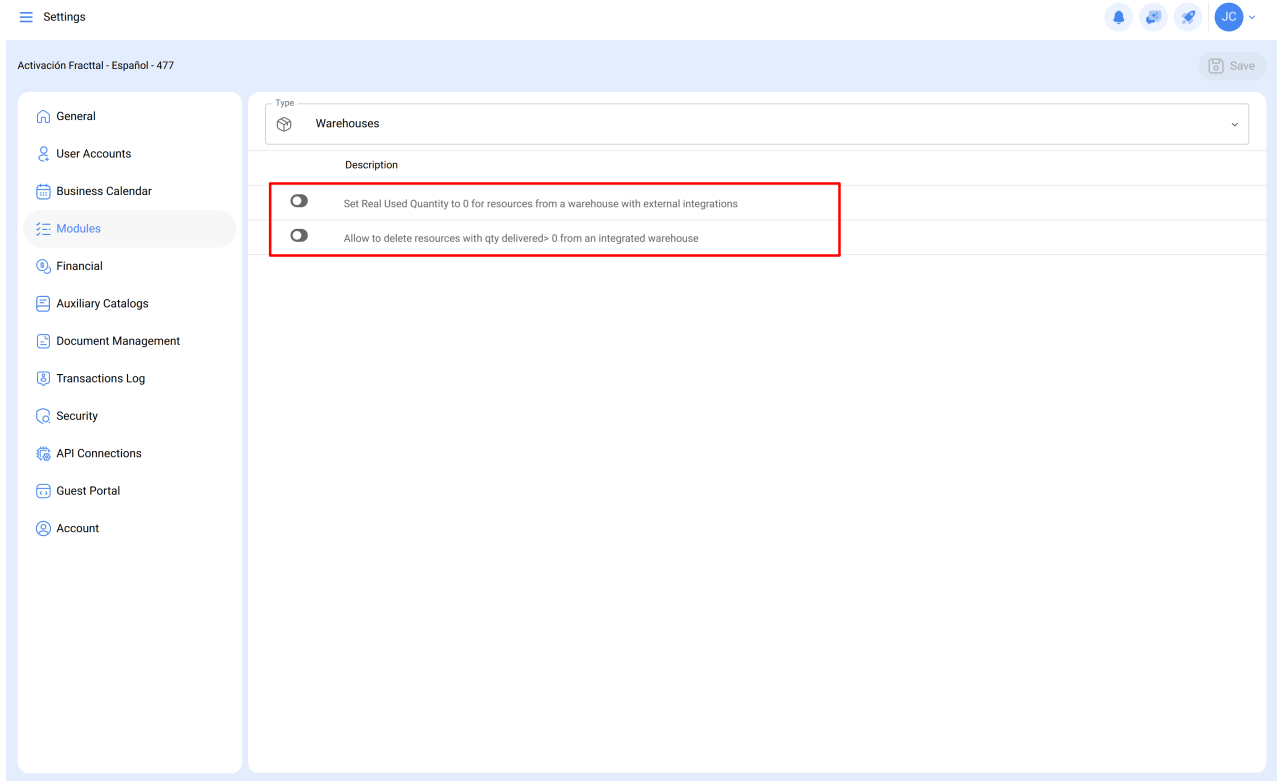
The main configuration area includes a table of settings:

Name	Group 1	Group 2
Code	Group 1	Group 2
Address	Barcode	Notes
City	Priority	Cost center
Zip code		
State		
Country		
Is part of		
Type		

At the bottom, there are two toggle switches:

- Mark Custom Form as mandatory: ☐
- Automatically update work orders and requests when the location's position is edited: ☒

This module allows you to efficiently manage resources and materials, making it easier to control inventory within the platform.



In this part, settings linked to the Fractal One 'warehouses' module are performed:

- ***Set or not the real used quantity to zero for resources coming from an warehouse with external integrationsn.***
- ***Allow or disallow tto delete resources with delivered quantity greater than zero coming from an integrated warehouse.***