

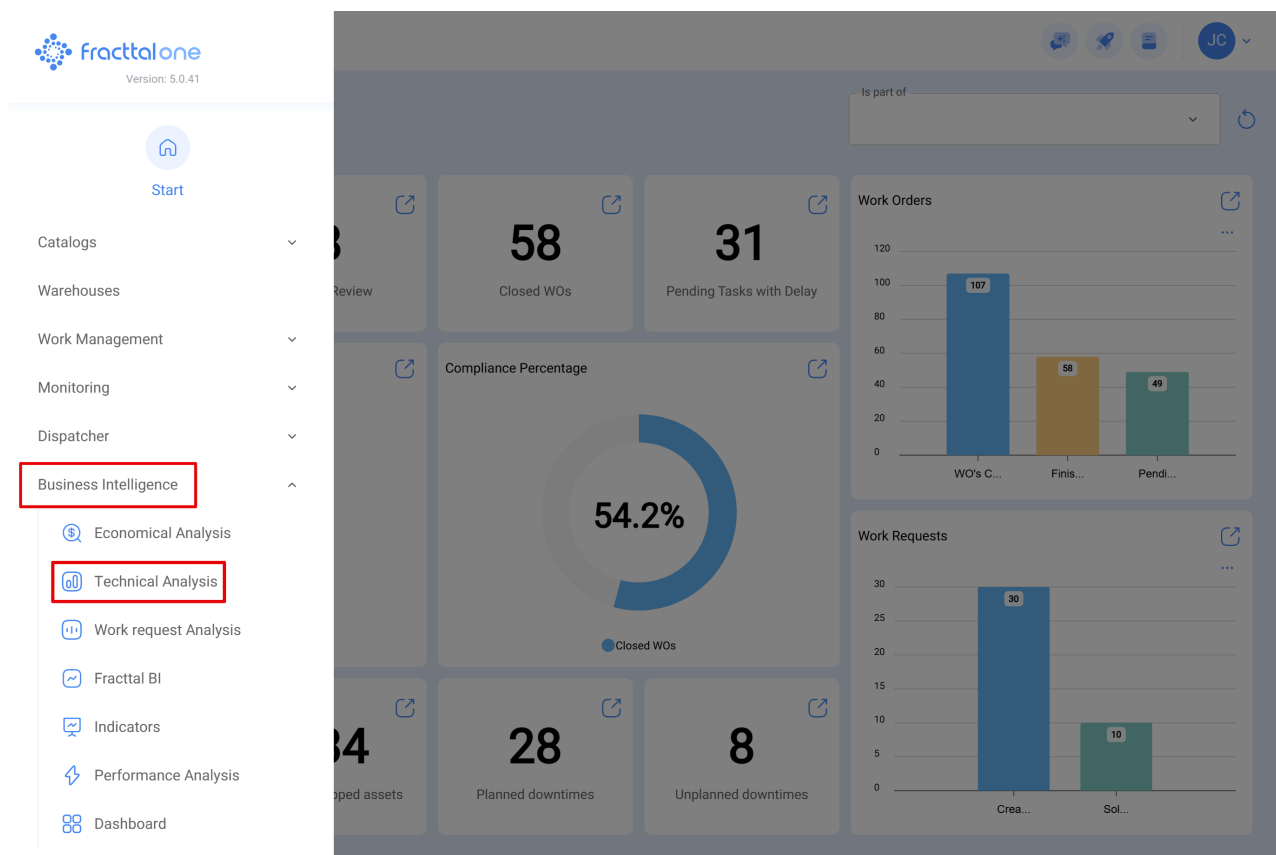
# Failures analysis

[help.fracttal.com/hc/en-us/articles/25022351637005-Failures-analysis](https://help.fracttal.com/hc/en-us/articles/25022351637005-Failures-analysis)

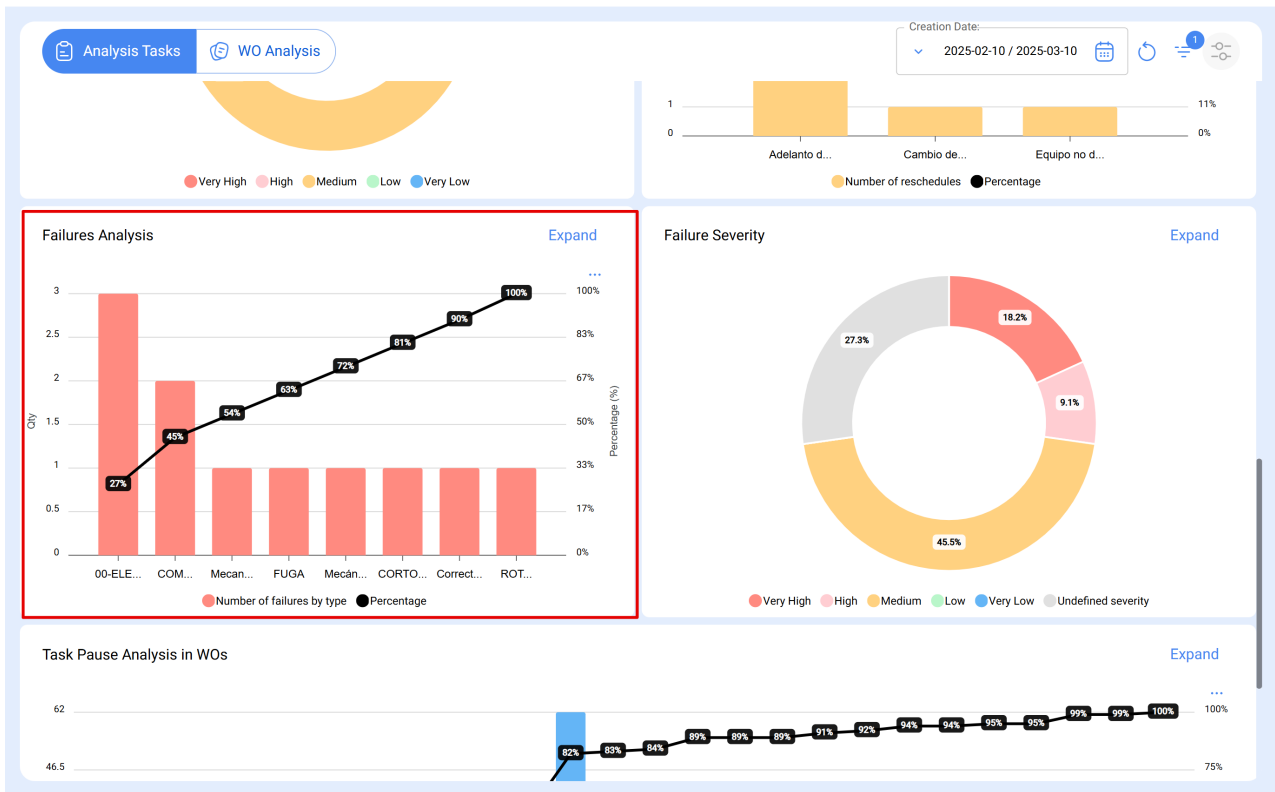
Failures analysis allows you to identify and classify the main occurrences that impact asset management. Using a **Pareto diagram**, this feature presents failures in both numerical and percentage formats, helping to efficiently prioritize corrective and preventive actions.

## Accessing Failure Analysis

To view this information, follow the steps below:



1. In the main menu, go to **Business Intelligence**.
2. Select the option **Technical Analysis**.
3. Within this module, scroll down until you find the **Failures Analysis** section.

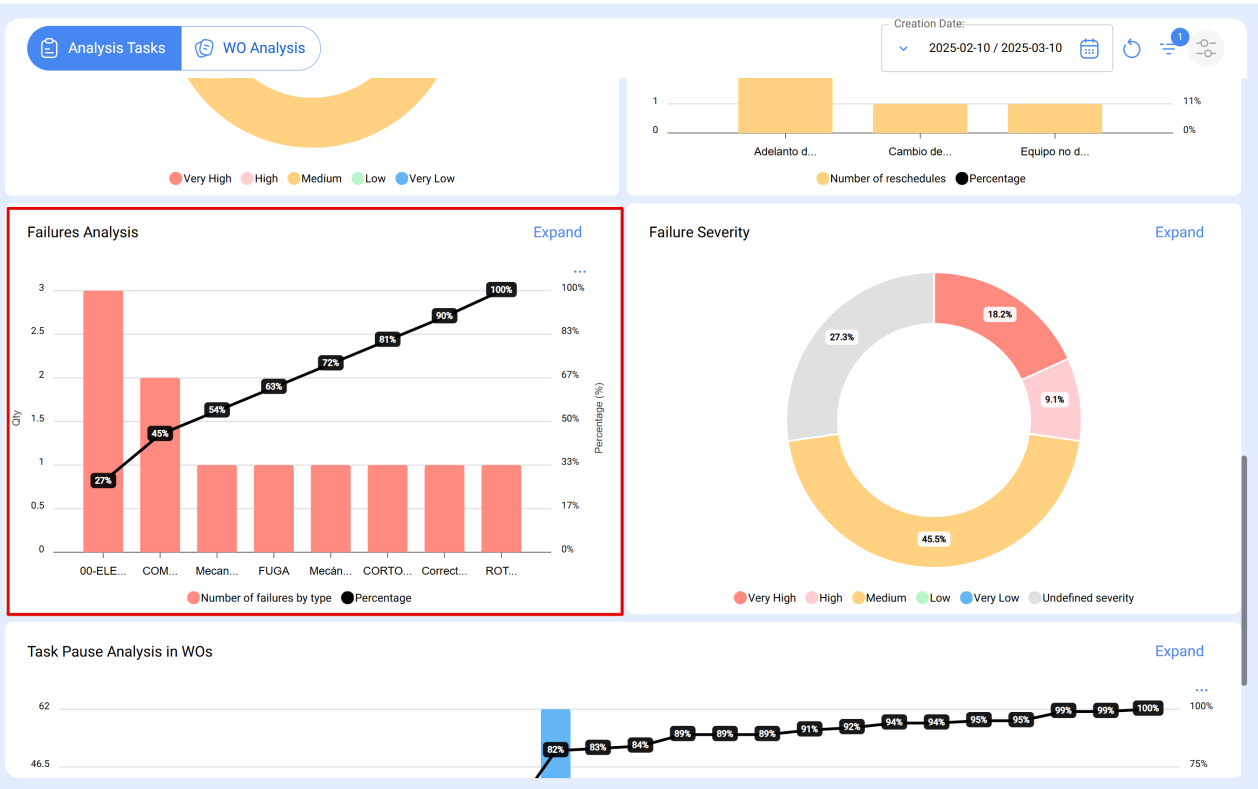


The Pareto diagram will be highlighted, displaying the most frequent types of failures and their representativeness within the system.

## Exploring the Analysis Details

To obtain more details about the recorded failures, click on the **"Expand"** option. This section provides two different views:

- **Chart:** Displays an expanded diagram, detailing the number of failures by type and their percentage of occurrence.
- **Details:** Presents specific information about each failure, including the Work Order (WO), Asset, Cause of Failure, and other relevant data.



Failures Analysis

Chart | **Details**

Failure	Work Order	Assets	Out of Service	Location
00-ELECTRICA	OT-2322-FRA	CENTRO COMERCIAL EL TESORO { CC-TER }	No	//
ROTURA	OT-2388-IMP	{ HOR-02 } HORNO 02 ATLAS COPCO INOXIDABLE	No	// Empresa M
Mecanica	OT-2331-FRA	{ MAQ-3 } BANDA TRANSPORTADORA HEAVEN MAQ BELEM - FUSI...	Yes	// FERMOS/ T
CORTO CIRCUITO	OT-2396-IMP	{ ROB-0003 } ROBO FANUC	Yes	// WEBNAR A'
00-ELECTRICA	OT-2416-IMP	{ ROB-0003 } ROBO FANUC	Yes	// WEBNAR A'
COMPRESOR	OT-2409-IMP	{ TRAC-ALEX-01 } TRACTOR ALEXANDER	Yes	// AGRORENT
Mecánica	OT-2316-FRA	{ } A/C 1	Yes	// FERNANDO
Correctivo	OT-2383-IMP	{ GT38-2003 } LOCOMOTORA GT3 ACL	Yes	// FERNONOR
COMPRESOR	OT-2372-FRA	Predio VIP { PVIP-0001 }	Yes	//
00-ELECTRICA	OT-2341-FRA	{ JD085 } JHON DEERE 5085	No	// KENTUCKY.
FUGA	OT-2379-IMP	{ } Prensa 1	Yes	// FERNANDO

Showing 11 of 11

All these charts can be examined in detail by clicking on the **"Details"** icon available in the complete list view. The system will display a **table with a detailed description** of the data presented in the charts, allowing for an in-depth analysis of occurrences.

Chart Details

	Failure	Work Order	Assets	Out of Serv
<input type="checkbox"/>	00-ELECTRICA	OT-2322-FRA	CENTRO COMERCIAL EL TESORO { CC-TER }	No
<input type="checkbox"/>	ROTURA	OT-2388-IMP	{ HOR-02 } HORNO 02 ATLAS COPCO INOXIDABLE	No
<input type="checkbox"/>	Mecanica	OT-2331-FRA	{ MAQ-3 } BANDA TRANSPORTADORA HEAVEN MAQ BELEM - FUSI...	Yes
<input type="checkbox"/>	CORTO CIRCUITO	OT-2396-IMP	{ ROB-0003 } ROBO FANUC	Yes
<input type="checkbox"/>	00-ELECTRICA	OT-2416-IMP	{ ROB-0003 } ROBO FANUC	Yes
<input type="checkbox"/>	COMPRESOR	OT-2409-IMP	{ TRAC-ALEX-01 } TRACTOR ALEXANDER	Yes
<input type="checkbox"/>	Mecánica	OT-2316-FRA	{ } A/C 1	Yes
<input type="checkbox"/>	Correctivo	OT-2383-IMP	{ GT38-2003 } LOCOMOTORA GT3 ACL	Yes
<input type="checkbox"/>	COMPRESOR	OT-2372-FRA	Predio VIP { PVIP-0001 }	Yes
<input type="checkbox"/>	00-ELECTRICA	OT-2341-FRA	{ JD085 } JHON DEERE 5085	No
<input type="checkbox"/>	FUGA	OT-2379-IMP	{ } Prensa 1	Yes

Export  
Bulk export data

These indicators are based on the information that had the assets and tasks when the WO was generated

Showing 11 of 11

The module's information can be **exported** using the additional options menu, which accompanies each chart and table.