

NFC

help.fracttal.com/hc/en-us/articles/30873227779469-NFC

NFC (Near Field Communication) is a wireless communication technology that enables the identification and validation of people or assets. In the context of Fracttal One, it is primarily used to identify the different assets created on the platform. This article details the procedure for configuring reading devices and NFC tags, as well as the functionalities available in the Fracttal One application.

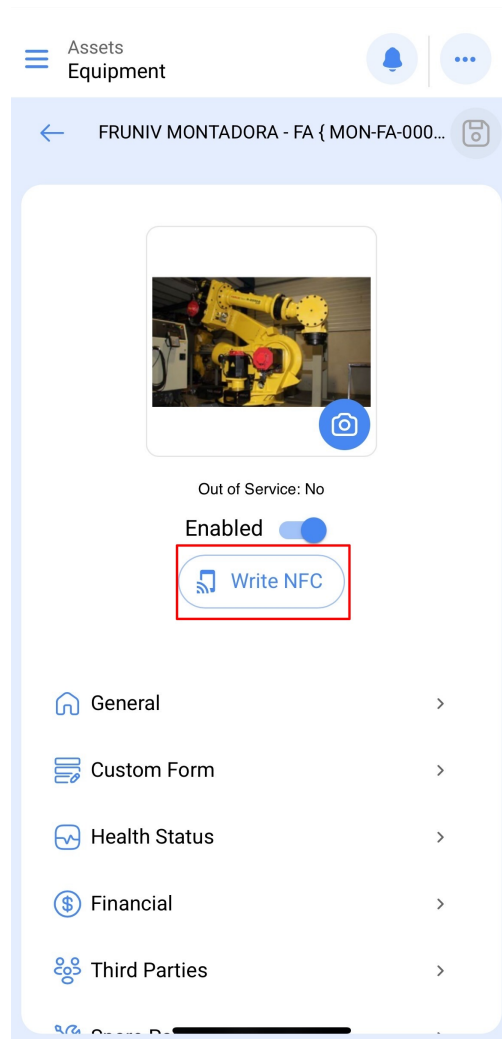
Reading and Writing NFC Tags

Functionality

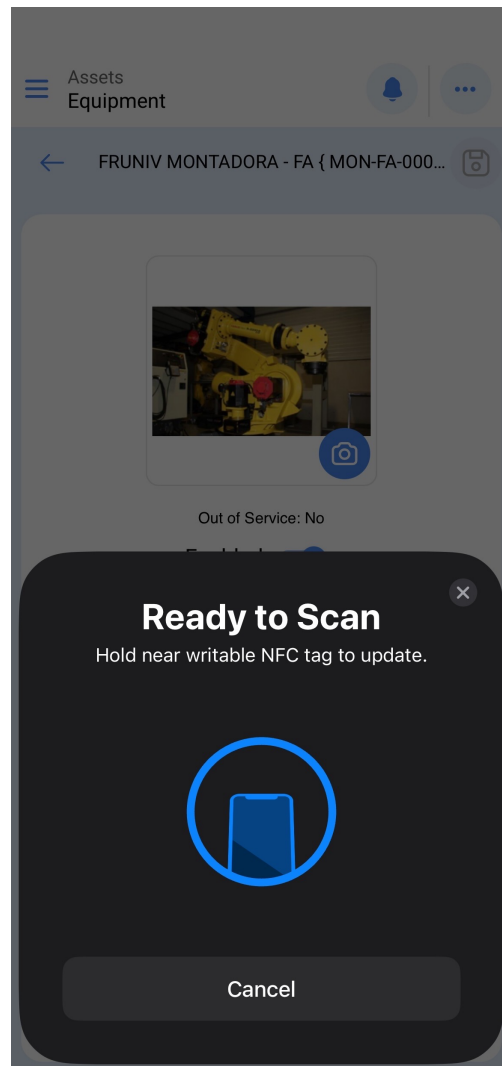
From the Fracttal One application, you will not only be able to read your NFC tags but also edit them. By installing them on the corresponding equipment, you will be able to see the asset details, generate an unplanned task, or create a new work request.

Process for Writing an NFC

1. Open the asset you want to enter into the available tag and click on the “WRITE NFC” button.



2. Bring the device close to the tag when the message “READY TO SCAN” appears. You will receive a confirmation message indicating that the writing was successfully completed.



Process for Reading an NFC

To read an NFC from an Android device, make sure the NFC reader is active and open the Fractal One mobile application. By bringing the device close in any module of Fractal One, the reading will occur instantly.



QR Code



NFC Reader

Catalog

Wareho

Work Management

Monitoring

Dispatcher

Business Intelligence

Cloud Disk

Requests

Online help



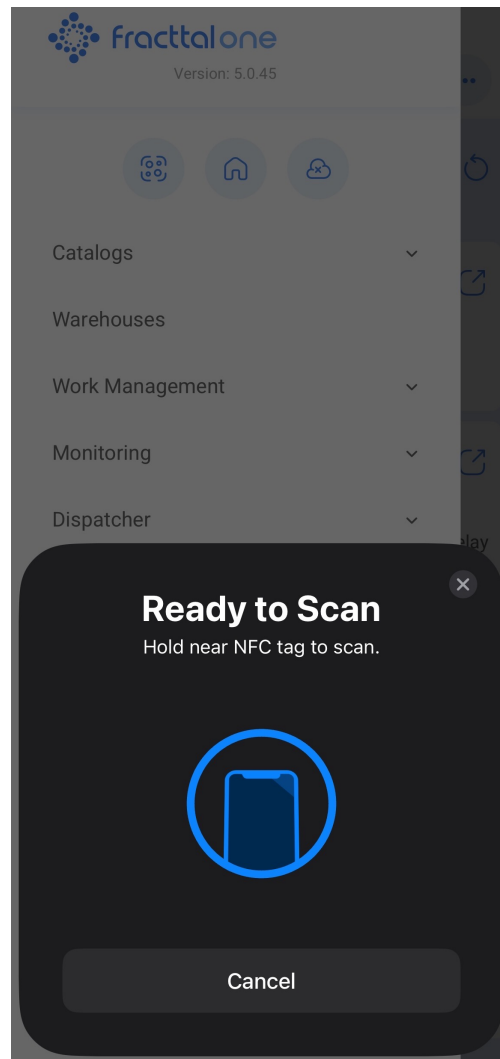
Support



Create ticket

Commit: 9f7bf20

BuiltTime: 2025-04-08 18:04



The integration of NFC technology in Fractal One facilitates asset management, allowing for quick and efficient identification. Through the reading and writing of NFC tags, users can optimize the administration of their resources and improve maintenance processes.