

How to Connect Fractal One with ChatGPT Using MCP OAuth?

 help.fractal.com/hc/en-us/articles/46549897218445-How-to-Connect-Fractal-One-with-ChatGPT-Using-MCP-OAuth

Connecting Fractal One with ChatGPT allows you to interact with your maintenance data directly from the ChatGPT interface, using natural language to query work orders, assets, metrics, and more, without needing to leave the assistant.

The integration uses the MCP (Model Context Protocol) with OAuth 2.0 authentication, ensuring that ChatGPT accesses Fractal with the same permissions as the authenticated user.

Requirements

- Active Fractal One account with administrator permissions or access to Settings.
- ChatGPT account with Pro, Team, Enterprise, or Edu plan (MCP connector functionality is not available on the free ChatGPT plan).
- Access to the API Connections section within Fractal One.
- Developer Mode enabled in ChatGPT (see Step 5).

Step by Step

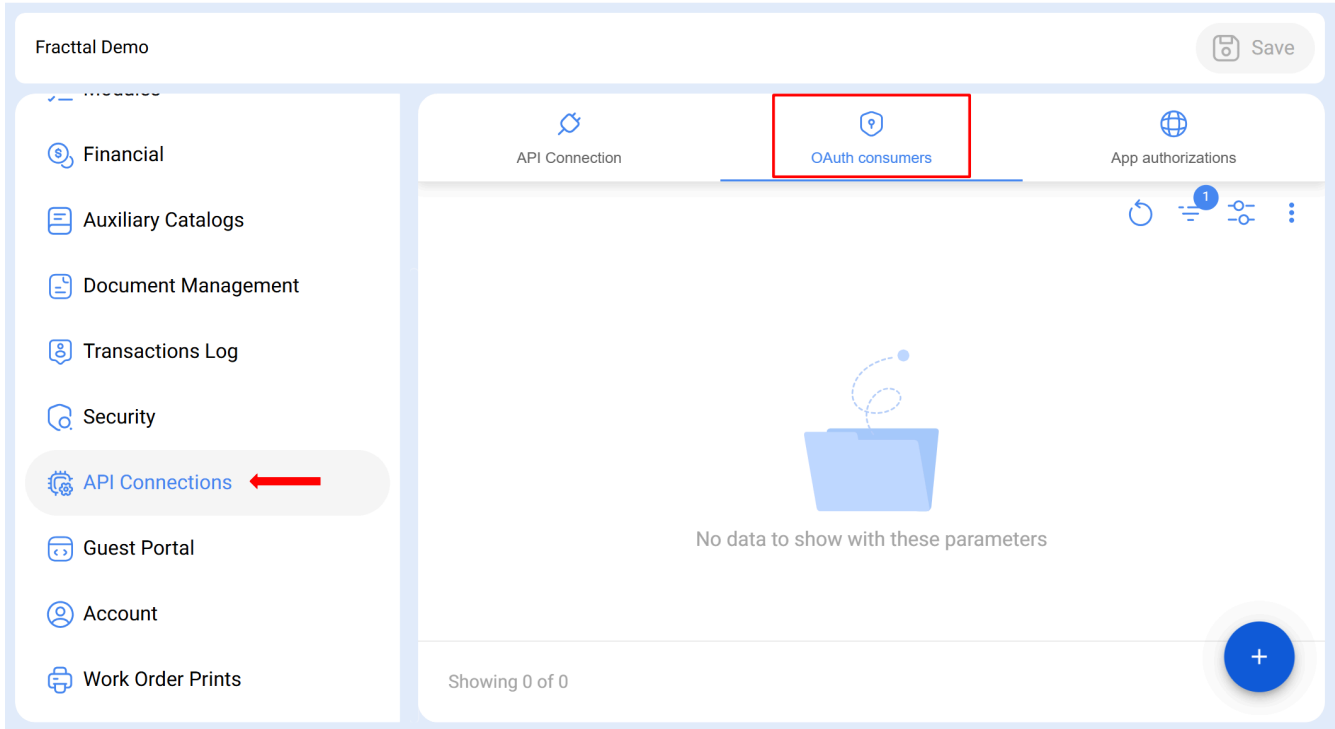
1. Access Fractal One Settings

Log in to your Fractal One account. In the upper right corner, click on the user menu and select Settings.

User Menu › Settings

2. Go to API Connections

In the settings side menu, locate and select **API Connections**. Then click on the **OAuth Consumers** tab.



Settings > API Connections > OAuth Consumers

3. Create a New OAuth Consumer

Click the (+) button to add a new consumer.

Fractal Demo Save

Financial
Auxiliary Catalogs
Document Management
Transactions Log
Security
API Connections
Guest Portal
Account
Work Order Prints

API Connection **OAuth consumers** App authorizations

No data to show with these parameters

Showing 0 of 0

Fill out the form with the following information:

Settings

Activación Fractal - Español - 477

General
User Accounts
Business Calendar
Modules
Financial
Auxiliary Catalogs
Document Management
Transactions Log
Security
API Connections
Guest Portal
Account
Work Order Prints

API Connection **OAuth consumers**

<input type="checkbox"/>	Name	Key	Secret
<input type="checkbox"/>	Test - Claude - RT	bvxeW7vN1tiGZeW7mm	JdIL
<input type="checkbox"/>	ChatGPT (Test RT)	t6y4sWk11J2ejJSqZI	kr9a
<input type="checkbox"/>	FRACTTAL HUB	Vux4YDrCUITBld9aEG	Kbnc
<input type="checkbox"/>	Conetion - fracttal hub	NYVRswIG3uEMuRWEgq	38DQ
<input type="checkbox"/>	Nova OS - Whatsapp	YVXaScIXxs0DRXnh3y	8sqit
<input type="checkbox"/>	notificacion Wpp	4lUpErIF5VT5NIEhI8	k1GY
<input type="checkbox"/>	Whatsapp	LmEs5x3GEfVPlIdS38n	m48
<input type="checkbox"/>	WHATSAPP RAMON	GxoBW9g0gSdMWIJKRO	4hfQ

Showing 8 of 21

Edit OAuth consumer

Grant type: **Authorization code**

Name: **ChatGPT (Test RT)**

Description: **ChatGPT (Test RT)**

Callback URL: **https://chatgpt.com/**

URL

Privacy policy URL

End user license agreement URL

Group Permissions: **GOOGLE SHEET**

Credentials:

Creation Date: **2026-04-28 11:29**

Key

Field

Value

Authorization Type Authorization Code

Name Name the connection as you prefer (e.g., ChatGPT MCP)

URL **Callback URL generated by ChatGPT** (this must be done in parallel with step 6)

Permission Group Select the permission group you want. **However, the system will use the permissions of the authenticated user.**

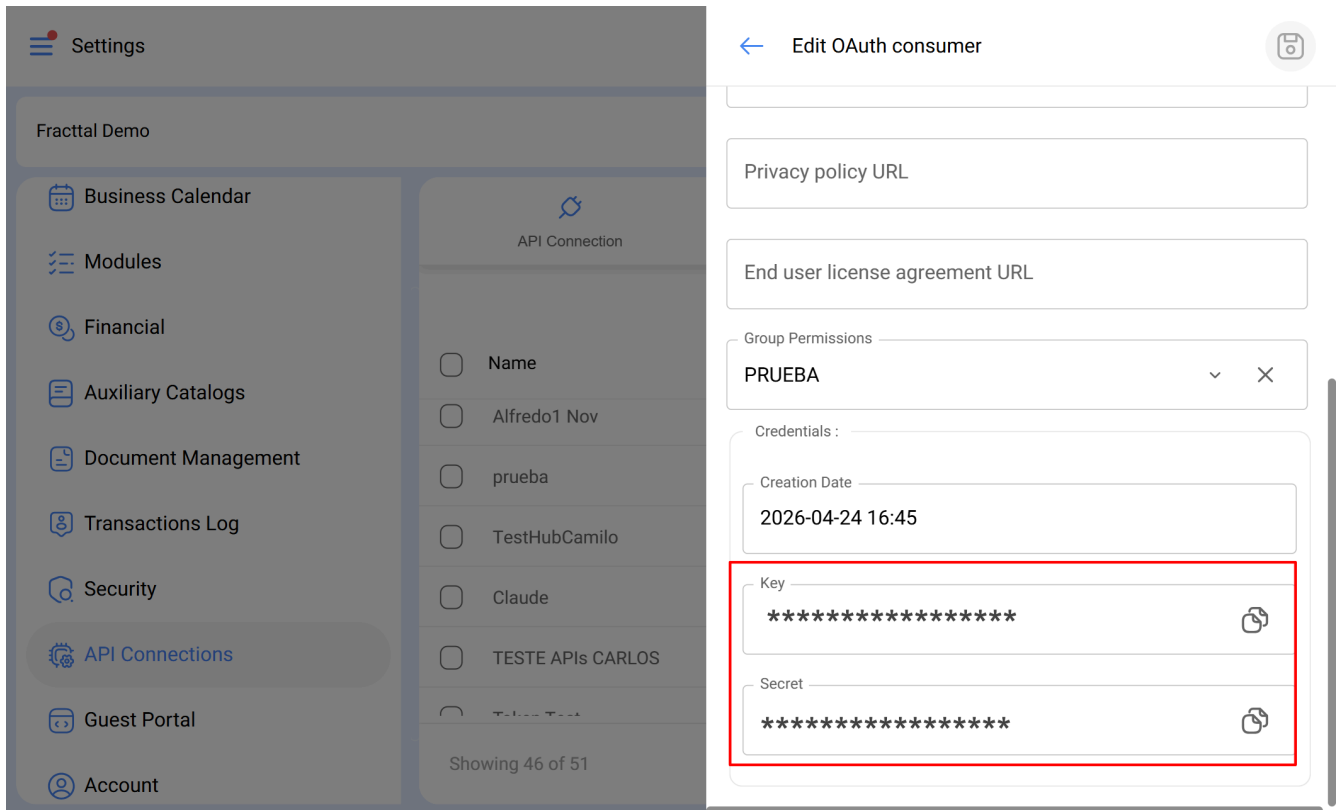
Once the form is complete, click the Save icon (top right).

The image shows a screenshot of a web application interface. On the left, there is a sidebar menu with various settings categories: General, User Accounts, Business Calendar, Modules, Financial, Auxiliary Catalogs, Document Management, Transactions Log, Security, API Connections (highlighted), Guest Portal, Account, and Work Order Prints. The main content area is titled 'Activación Fractal - Español - 477' and displays a table of API Connections. The table has columns for Name, Key, and a 'Secret' indicator. One of the entries is 'ChatGPT (Test RT)' with the key '16y4sWk11J2ejJSqZI'. On the right side, there is a form titled 'Edit OAuth consumer'. The form includes fields for Grant type (set to 'Authorization code'), Name ('ChatGPT (Test RT)'), Description ('ChatGPT (Test RT)'), Callback URL ('https://chatgpt.com/c'), and Group Permissions ('GOOGLE SHEET'). There is also a 'Creation Date' field showing '2026-04-28 11:29'. A red box highlights a save icon in the top right corner of the form.

<input type="checkbox"/>	Name	Key	Secret
<input type="checkbox"/>	Test - Claude - RT	bvxeW7vN1tiGZeW7mm	JdiLF
<input type="checkbox"/>	ChatGPT (Test RT)	16y4sWk11J2ejJSqZI	kr9af
<input type="checkbox"/>	FRACTTAL HUB	Vux4YDrCUITBld9aEG	Kbnc
<input type="checkbox"/>	Conetion - fracttal hub	NYVRswIG3uEMuRWEgq	38DQ
<input type="checkbox"/>	Nova OS - Whatsapp	YVXaScIXxs0DRXnh3y	8sqiC
<input type="checkbox"/>	notificacion Wpp	4lUpErlF5VT5NIEhI8	k1GY
<input type="checkbox"/>	Whatsapp	LmEs5x3GEFVPIIdS38n	m48Q
<input type="checkbox"/>	WHATSAPP RAMON	GxoBW9g0gSdMWIJKRO	4hfQ

4. Copy the Generated Key and Secret

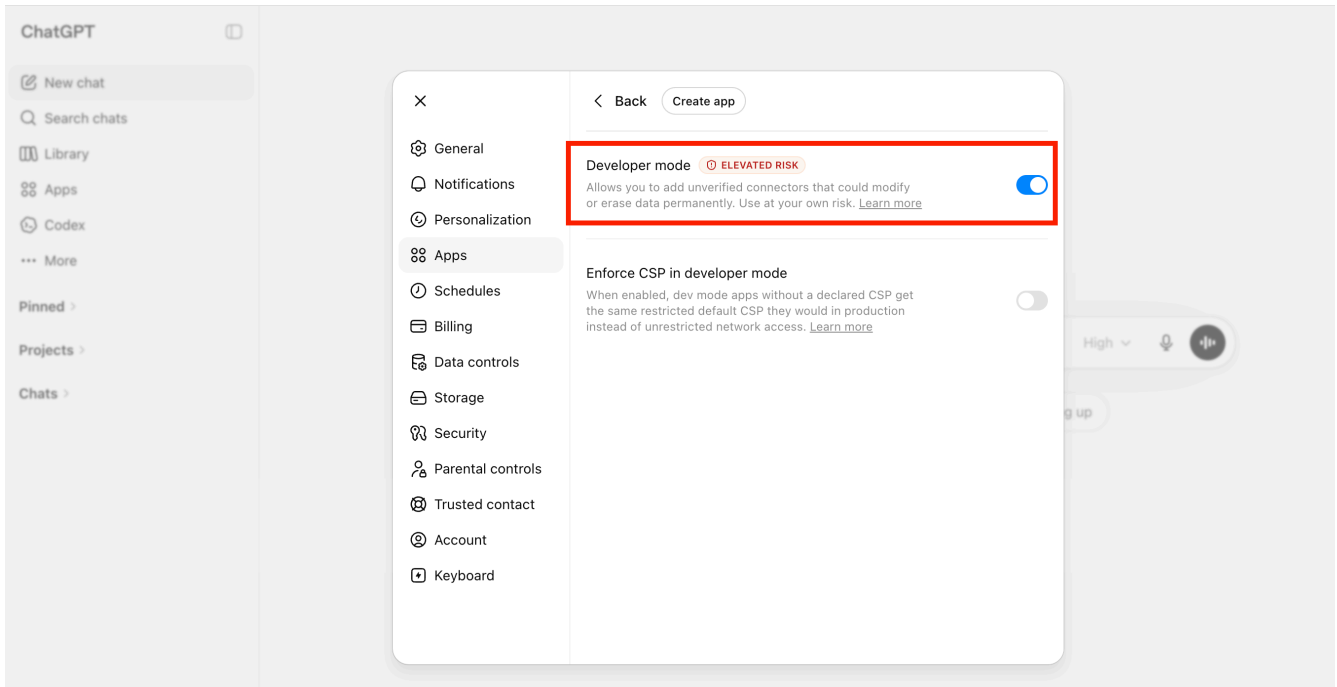
Upon saving, Fractal One will automatically generate a **Key** and a **Secret** for the consumer. Copy and securely store both values — you will need them in the next step.



5. Enable Developer Mode in ChatGPT

To add custom MCP connectors, you must first enable Developer Mode:

- Open ChatGPT at chatgpt.com and log in.
- In the lower-left corner, click your username and then go to Settings.
- Go to the Apps & Connectors section.
- Click Advanced and enable Developer Mode.

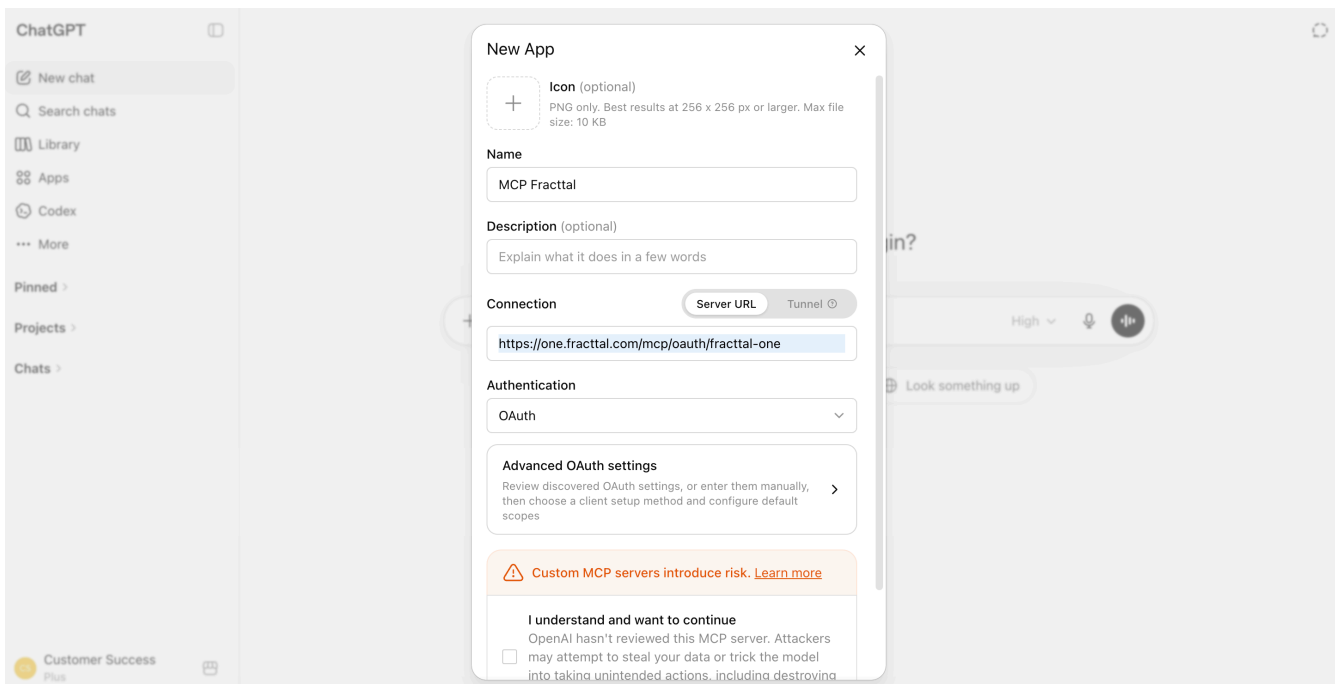


Note: Enabling Developer Mode will automatically disable ChatGPT’s Memory feature. This is a limitation imposed by OpenAI.

6. Add the MCP Connector in ChatGPT

With Developer Mode enabled, you can now add the Fractal One connector:

In Settings > Apps & Connectors, click Create (or Add MCP server, depending on your plan).



Fill out the form with the following information:

Field	Value
Connector Name	Fracttal One (or the name you prefer)
Description (optional)	MCP connector for maintenance management with Fracttal
MCP Server URL	https://one.fracttal.com/mcp/oauth/fracttal-one
Authentication	OAuth
Client ID	Paste the Key generated in Step 4
Client Secret	Paste the Secret generated in Step 4

- Check the risk confirmation box ("I trust this application").
- Click Create.

Important: When performing the advanced OAuth configuration in ChatGPT, the **Callback URL** required to establish the OAuth connection in Fracttal One is automatically generated (this must be done in parallel with step 4).

6. Authorize the Connection

ChatGPT will show you a button to connect with Fracttal One. When you click it, a Fracttal authorization window will open where you must:

- Log in with your Fracttal One account.
- Confirm the requested access permissions.

Once approved, the connector will be active. You will see its status as Connected in the Apps & Connectors section.

Done! You now have Fracttal One connected to ChatGPT. You can start a conversation and ask about your work orders, assets, metrics, and more.

Important Considerations:

- Using this integration may involve usage, limits, or charges associated with ChatGPT (OpenAI) plans. Such costs and conditions are determined solely by OpenAI.
- ChatGPT may request confirmation before performing write actions (create, modify, delete records). Always review proposed actions before confirming them.
- The user is responsible for validating and supervising the actions and results generated through this integration.
- ChatGPT's Memory feature is automatically disabled when using Developer Mode.