

Warehouses

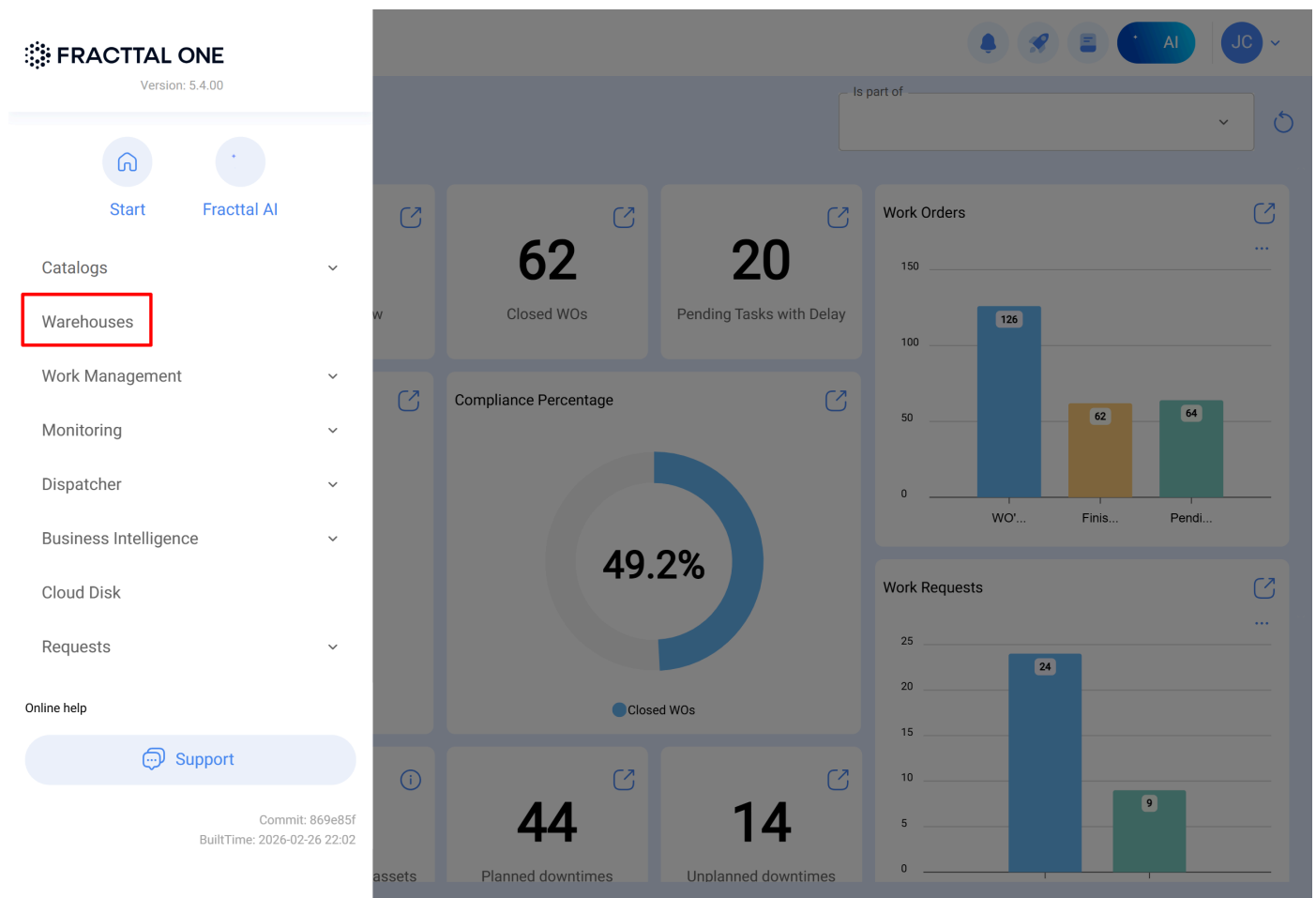
help.fractal.com/hc/en-us/articles/25149743918349-Warehouses

Warehouses are a fundamental feature that allows organizations to efficiently manage all materials, spare parts, and essential components for their maintenance operations. Each warehouse configured in the system functions as an autonomous entity, providing detailed and precise control over movements, costs, and inventory.

How to Access the Warehouses Module?

To access the warehouses module, follow these steps:

1. Click the menu icon located at the top left of the main bar.
2. Select the **“Warehouses”** option.



A new window will open with a list of all warehouses created in the system. From here, you can access each warehouse to check its stock, review movements, or manage its settings.

<input type="checkbox"/>	Enabled	Code	Description	Movement ID	Purchase Order ID	Stock control
<input type="checkbox"/>	Yes	ALM.EPSF-00	ALMACEN	MOV-1-ESF	OC-1-ESF	No
<input type="checkbox"/>	Yes	AMXFRESNILLO-1	ALMACEN	MOV-6FRES	OC-2FRES	No
<input type="checkbox"/>	Yes	ALM-HEC	ALMACEN	MOV-11-HEC	OC-3-HEC	No
<input type="checkbox"/>	Yes	ALM-AGROCAT	ALMACEN PRINCIPAL	MOV12	OC6	No
<input type="checkbox"/>	No	ALM-001	ALMACÉN PRINCIPAL	MOV6	OC1	No
<input type="checkbox"/>	Yes	ALM-BEE	ALMACEN PRINCIPAL BEE	MOV-14	OC-4	No
<input type="checkbox"/>	Yes	ALM-SER	ALMACEN	MOV-10-SER	OC-3-SER	No
<input type="checkbox"/>	Yes	alm-sintec	Almacén	MOV-25SINT	OC-7SINT	No
<input type="checkbox"/>	Yes	ALM-FRES.01	ALMACEN	17	3	No
<input type="checkbox"/>	Yes	AL1012F-JC	ALM-JC	3	1	No
<input type="checkbox"/>	No	ALM-DP	EJEMPLO DIEGO	MOV-9-DP	OC.3-DP	No
<input type="checkbox"/>	Yes	ALM-SAX	SAXONIA	MOV13	OC4	No

Showing 18 of 18



From the warehouses module, it is possible to perform key inventory cycle operations: register material entries, execute outputs linked to work orders, transfer stock between warehouses, adjust inventory, and generate purchase orders. All these actions are recorded with full traceability, facilitating cost control and movement auditing.