

Available graph views in the cost pivot table

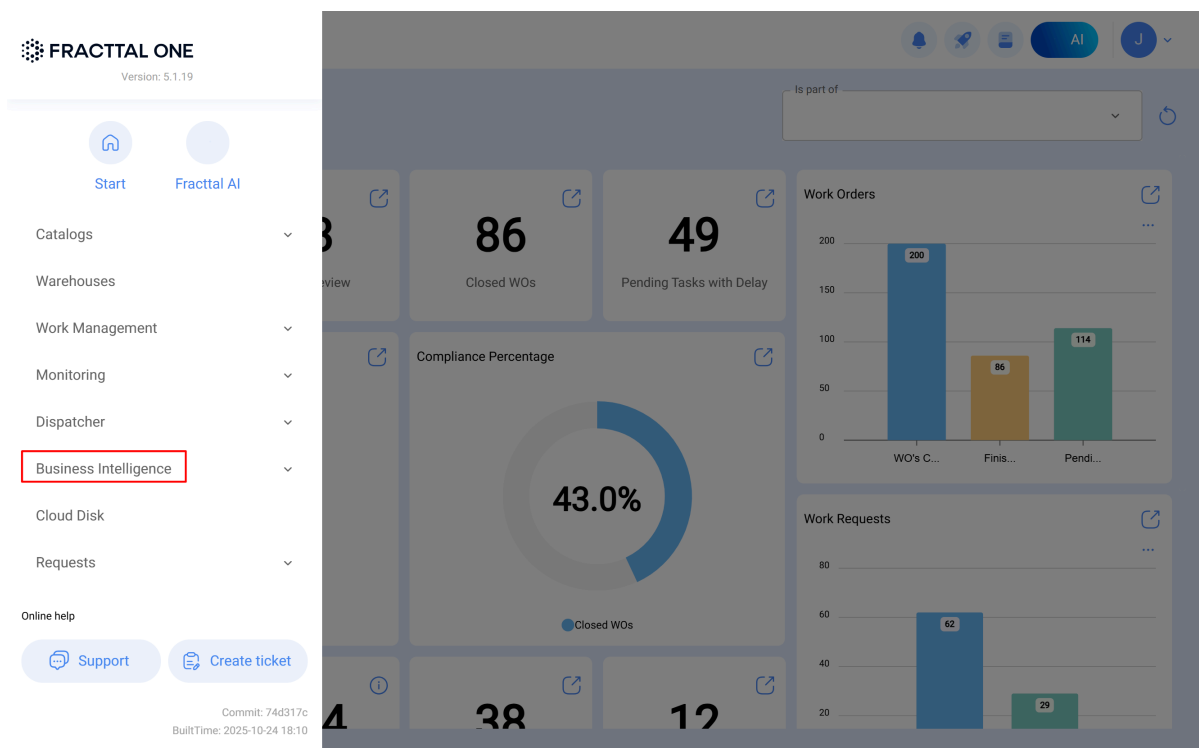
help.fracttal.com/hc/en-us/articles/40831386574733-Available-graph-views-in-the-cost-pivot-table

The cost pivot table in Fracttal One allows you not only to analyze the economic data of your maintenance activities but also to visualize them through different types of interactive charts and tables.

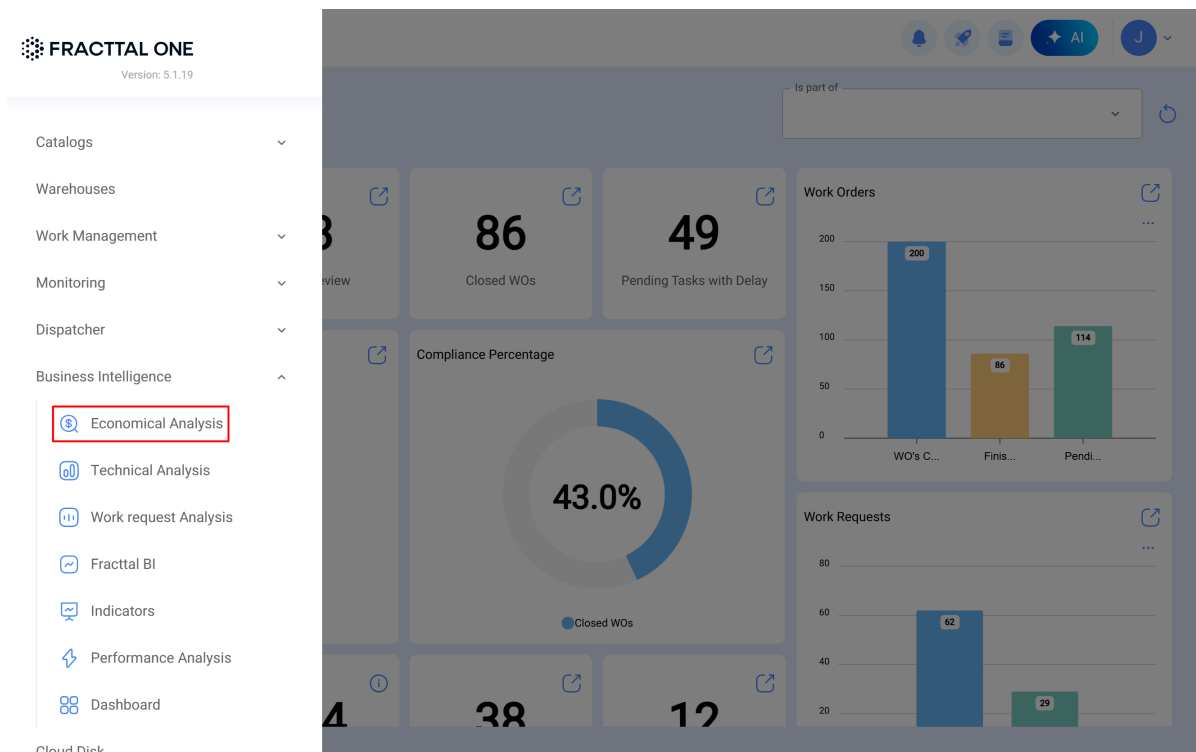
Each view offers a different way to interpret the information depending on the analysis objective.

How to Access the Graph Views

1. In the main menu, go to **Business Intelligence**.



2. Select **Economic Analysis**.

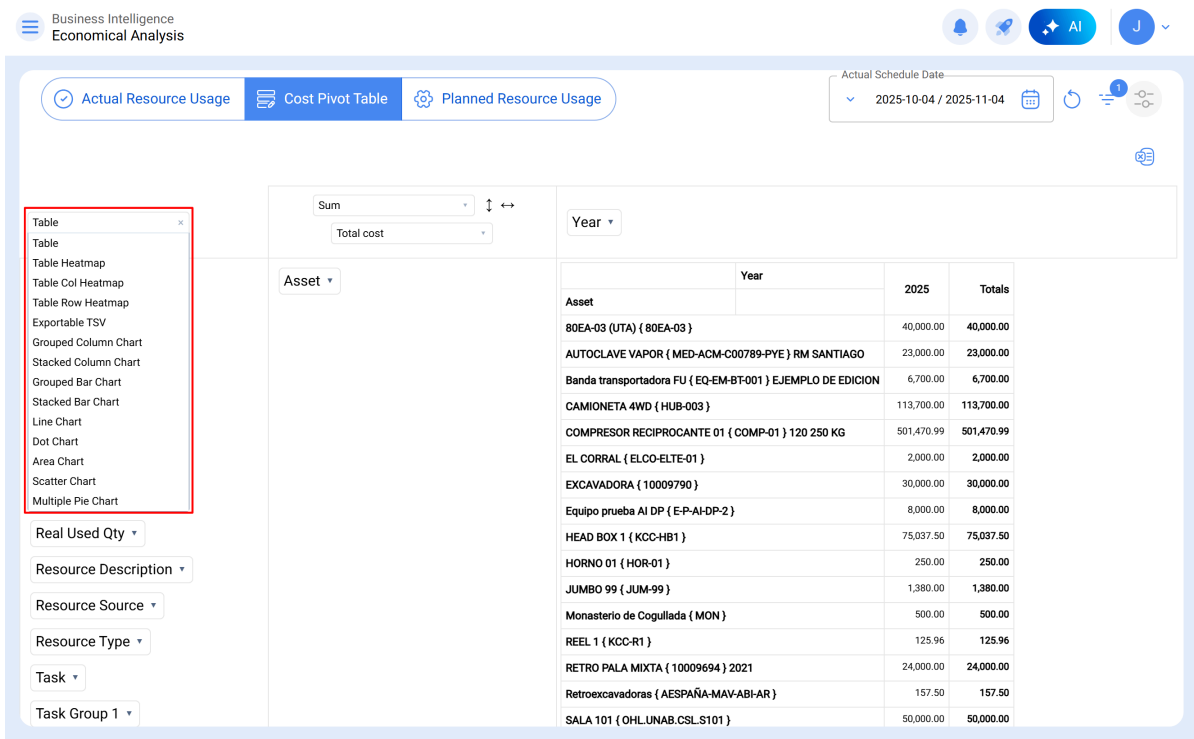


3. Click on the **Cost Pivot Table** tab.

The screenshot shows the 'Cost Pivot Table' tab in the FRACTAL ONE dashboard. The table displays a list of assets with their respective costs for the year 2025. The table has columns for 'Asset', 'Year', '2025', and 'Totals'. The 'Cost Pivot Table' tab is highlighted in the top navigation bar. The table data is as follows:

Asset	Year	2025	Totals
80EA-03 (UTA) { 80EA-03 }		40,000.00	40,000.00
AUTOCLAVE VAPOR { MED-ACM-C00789-PYE } RM SANTIAGO		23,000.00	23,000.00
Banda transportadora FU { EQ-EM-BT-001 } EJEMPLO DE EDICION		6,700.00	6,700.00
CAMIONETA 4WD { HUB-003 }		113,700.00	113,700.00
COMPRESOR RECIPROCANTE 01 { COMP-01 } 120 250 KG		501,470.99	501,470.99
EL CORRAL { ELCO-ELTE-01 }		2,000.00	2,000.00
EXCAVADORA { 10009790 }		30,000.00	30,000.00
Equipo prueba AI DP { E-P-AI-DP-2 }		8,000.00	8,000.00
HEAD BOX 1 { KCC-HB1 }		75,037.50	75,037.50
HORNO 01 { HOR-01 }		250.00	250.00
JUMBO 99 { JUM-99 }		1,380.00	1,380.00
Monasterio de Cogullada { MON }		500.00	500.00
REEL 1 { KCC-R1 }		125.96	125.96
RETRO PALA MIXTA { 10009694 } 2021		24,000.00	24,000.00
Retroexcavadoras { AESPAÑA-MAV-ABI-AR }		157.50	157.50
SALA 101 { OHL.UNAB.CSL.S101 }		50,000.00	50,000.00

4. At the top left, open the visualization dropdown menu.



Here you can choose from several types of views to represent your data.

Available View Types

1. Table

Displays data in a tabular format.

Ideal for detailed reviews and audits where exact values of each field are required (for example, *Total Cost*, *Unit Cost*, *Asset*, *OT Id*).

Actual Resource Usage Cost Pivot Table Planned Resource Usage

Table	Sum	Year
	Total cost	
Asset Group 1	Asset	
Asset Group 2		
Asset Type		
Cost center		
Issued Qty		
Month		
Qty		
Real Used Qty		
Resource Description		
Resource Source		
Resource Type		
Task		
Task Group 1		
Task Group 2		
Task type		
Total cost		
Unit		
Unit Cost		
WO Id		

Asset	Year	2025	Totals
80EA-03 (UTA) { 80EA-03 }		40,000.00	40,000.00
AUTOCLAVE VAPOR { MED-ACM-C00789-PYE } RM SANTIAGO		23,000.00	23,000.00
BANDA TRANSPORTADORA 1 { MCA-P001-PROD-BT001 } 123456 7T DEHARD		500.00	500.00
Banda transportadora FU { EQ-EM-BT-001 } EJEMPLO DE EDICION		6,700.00	6,700.00
CAMIONETA 4WD { HUB-003 }		113,700.00	113,700.00
COMPRESOR RECIPROCANTE 01 { COMP-01 } 120 250 KG		501,470.99	501,470.99
CORTADORA 1 { MCA-P002-PROD-C0001 } 78910 CTR 950 S PILOUS		50.00	50.00
EL CORRAL { ELCO-ELTE-01 }		2,000.00	2,000.00
EMPAQUETADORA 1 { MCA-P003-PROD-EP001 } 0123 CMB-RER1 CMB SPAIN		257.50	257.50
EXCAVADORA { 10009790 }		30,000.00	30,000.00
Equipo prueba AI DP { E-P-AI-DP-2 }		8,000.00	8,000.00
HEAD BOX 1 { KCC-HB1 }		75,037.50	75,037.50
HORNO 01 { HOR-01 }		250.00	250.00
JUMBO 99 { JUM-99 }		1,380.00	1,380.00
MOLINO DE BOLAS MCA { MB01 } 1234 METSO		83.33	83.33
Monasterio de Cogullada { MON }		500.00	500.00
REEL 1 { KCC-R1 }		125.96	125.96
RETRO PALA MIXTA { 10009694 } 2021		24,000.00	24,000.00
Retroexcavadoras { AESPAÑA-MAV-ABI-AR }		157.50	157.50
SALA 101 { OHLUNAB.CSL.S101 }		50,000.00	50,000.00
apilador de bandejas { C23 } LAVADORA 3		5,000.00	5,000.00
equipo IDIEM { IDIEM.444 }		17,500.00	17,500.00
mesa acumuladora { A21 } INFEED 1		25,000.00	25,000.00
selladora de cajas { G27 } PALLET CAJAS 7		5,000.00	5,000.00
{ 80EA-02 } 80EA-02 (CHILLER)		50.00	50.00

Recommended for:

- Accounting control.
- Exporting data to Excel.
- Comparative analysis by cost center.

2. Table Row Heatmap

Applies a **heatmap** over the table, highlighting the highest or lowest values with colors. Allows quick detection of deviations or spending concentrations.

Actual Resource Usage

Cost Pivot Table

Planned Resource Usage

Actual Sched 2025

Table Col Heatmap

Sum

Total cost

Year

Asset Group 1

Asset Group 2

Asset Type

Cost center

Issued Qty

Month

Qty

Real Used Qty

Resource Description

Resource Source

Resource Type

Task

Task Group 1

Task Group 2

Task type

Total cost

Unit

Unit Cost

WO Id

Asset

Asset	Year	2025	Totals
80EA-03 (UTA) { 80EA-03 }		40,000.00	40,000.00
AUTOCLAVE VAPOR { MED-ACM-C00789-PYE } RM SANTIAGO		23,000.00	23,000.00
BANDA TRANSPORTADORA 1 { MCA-P001-PROD-BT001 } 123456 7T DEHARD		500.00	500.00
Banda transportadora FU { EQ-EM-BT-001 } EJEMPLO DE EDICION		6,700.00	6,700.00
CAMIONETA 4WD { HUB-003 }		113,700.00	113,700.00
COMPRESOR RECIPROCANTE 01 { COMP-01 } 120 250 KG		501,470.99	501,470.99
CORTADORA 1 { MCA-P002-PROD-C0001 } 78910 CTR 950 S PILOUS		50.00	50.00
EL CORRAL { ELCO-ELTE-01 }		2,000.00	2,000.00
EMPAQUETADORA 1 { MCA-P003-PROD-EP001 } 0123 CMB-RER1 CMB SPAIN		257.50	257.50
EXCAVADORA { 10009790 }		30,000.00	30,000.00
Equipo prueba AI DP { E-P-AI-DP-2 }		8,000.00	8,000.00
HEAD BOX 1 { KCC-HB1 }		75,037.50	75,037.50
HORNO 01 { HOR-01 }		250.00	250.00
JUMBO 99 { JUM-99 }		1,380.00	1,380.00
MOLINO DE BOLAS MCA { MB01 } 1234 METSO		83.33	83.33
Monasterio de Cogullada { MON }		500.00	500.00
REEL 1 { KCC-R1 }		125.96	125.96
RETRO PALA MIXTA { 10009694 } 2021		24,000.00	24,000.00
Retroexcavadoras { AESPAÑA-MAV-ABI-AR }		157.50	157.50
SALA 101 { OHLUNAB.CSL.S101 }		50,000.00	50,000.00
apilador de bandejas { C23 } LAVADORA 3		5,000.00	5,000.00
equipo IDIEM { IDIEM.444 }		17,500.00	17,500.00
mesa acumuladora { A21 } INFEED 1		25,000.00	25,000.00
selladora de cajas { G27 } PALLET CAJAS 7		5,000.00	5,000.00
{ 80EA-02 } 80EA-02 (CHILLER)		50.00	50.00

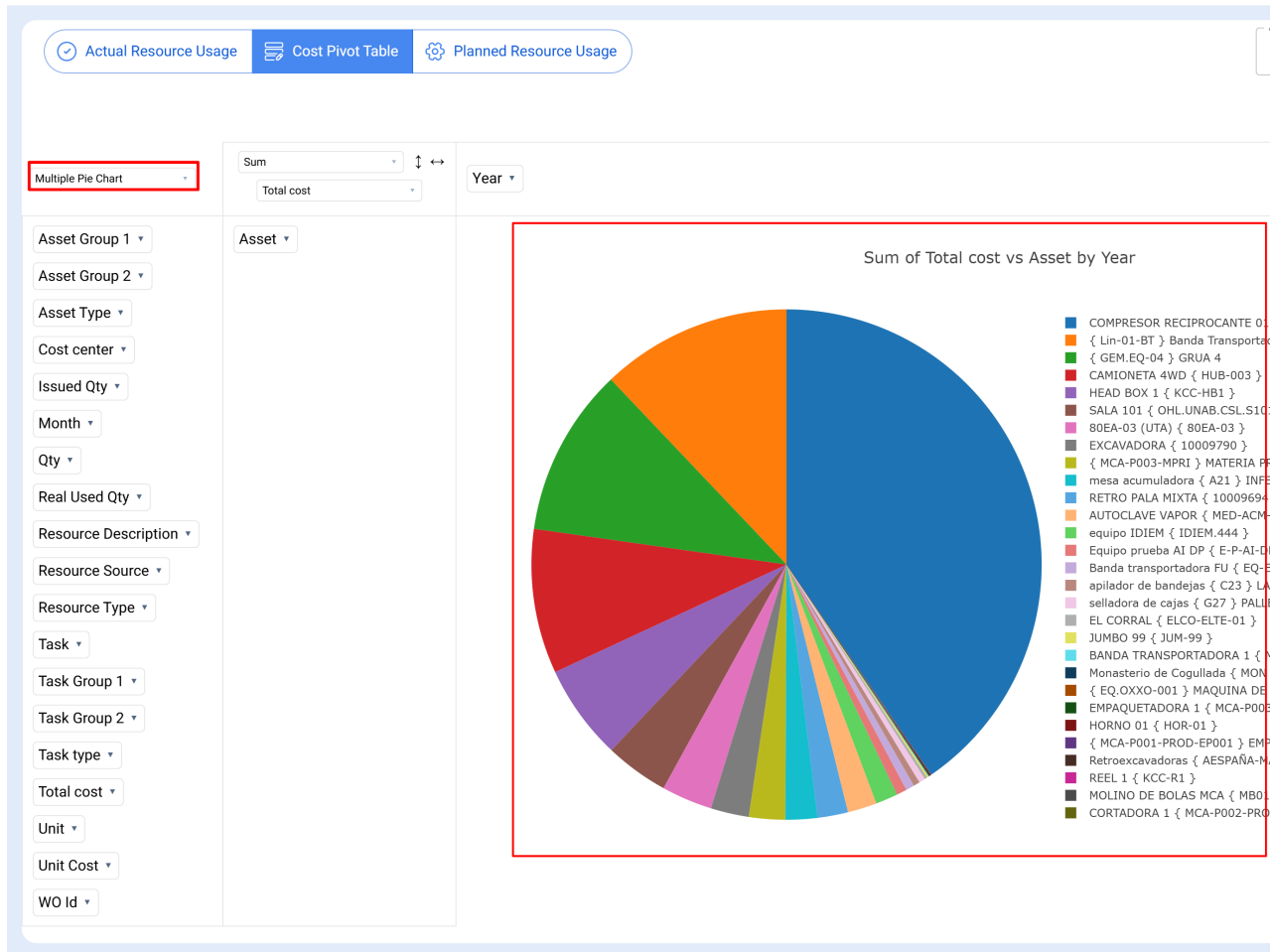
Recommended for:

- Identifying assets or cost centers with higher costs.
- Analyzing visual trends without using complex charts.

3. Multiple Pie Chart

Shows the proportion of costs or quantities by category (for example, *task type*, *asset*, or *cost center*).

The **Multiple Pie Chart** format allows comparing several categories in the same space.



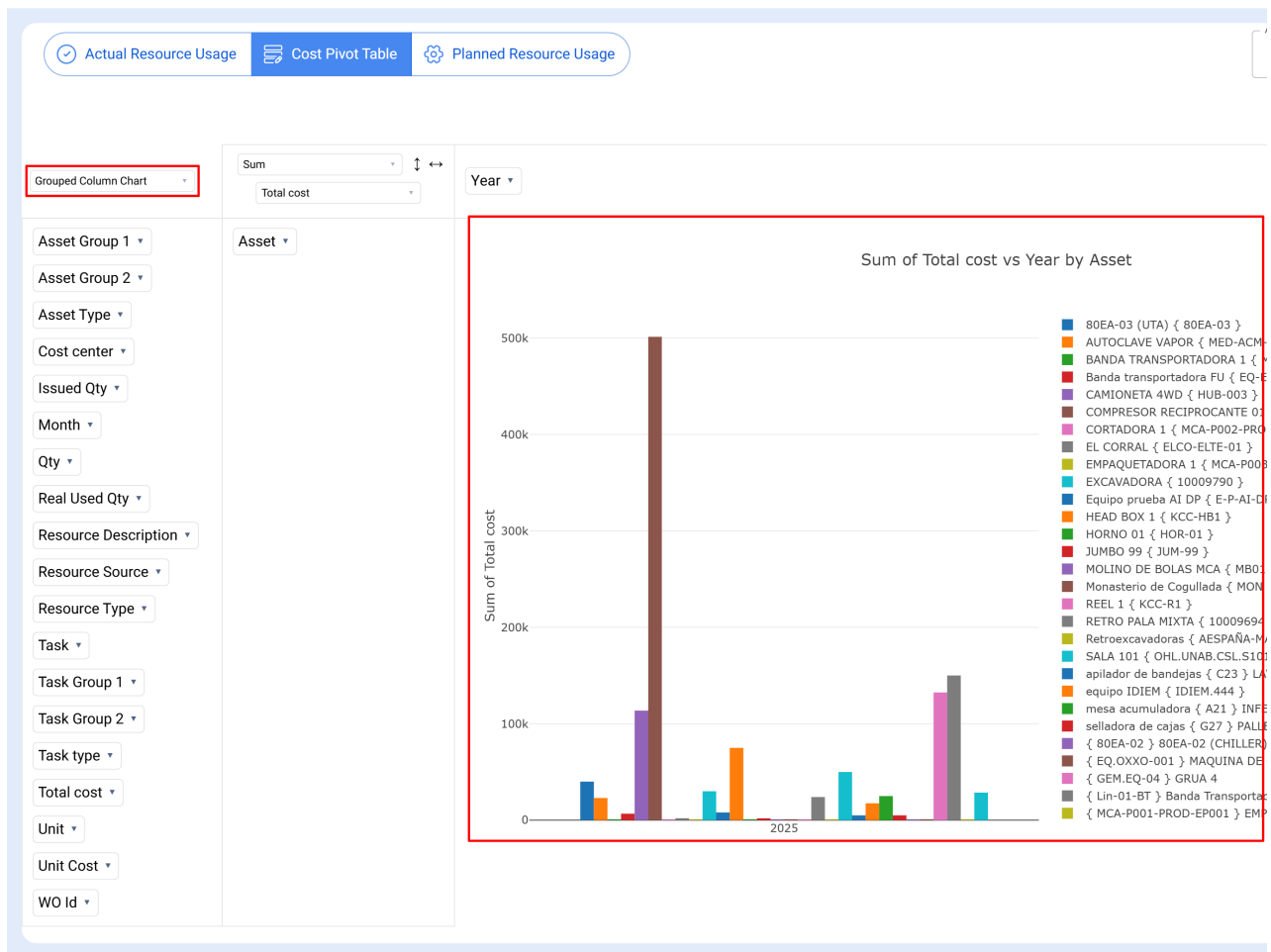
Recommended for:

- Comparing cost distribution by task type.
- Seeing which area or asset concentrates the most spending.

4. Column Chart

Represents data in **vertical bars**.

Each column can show the total or average cost of each selected category.

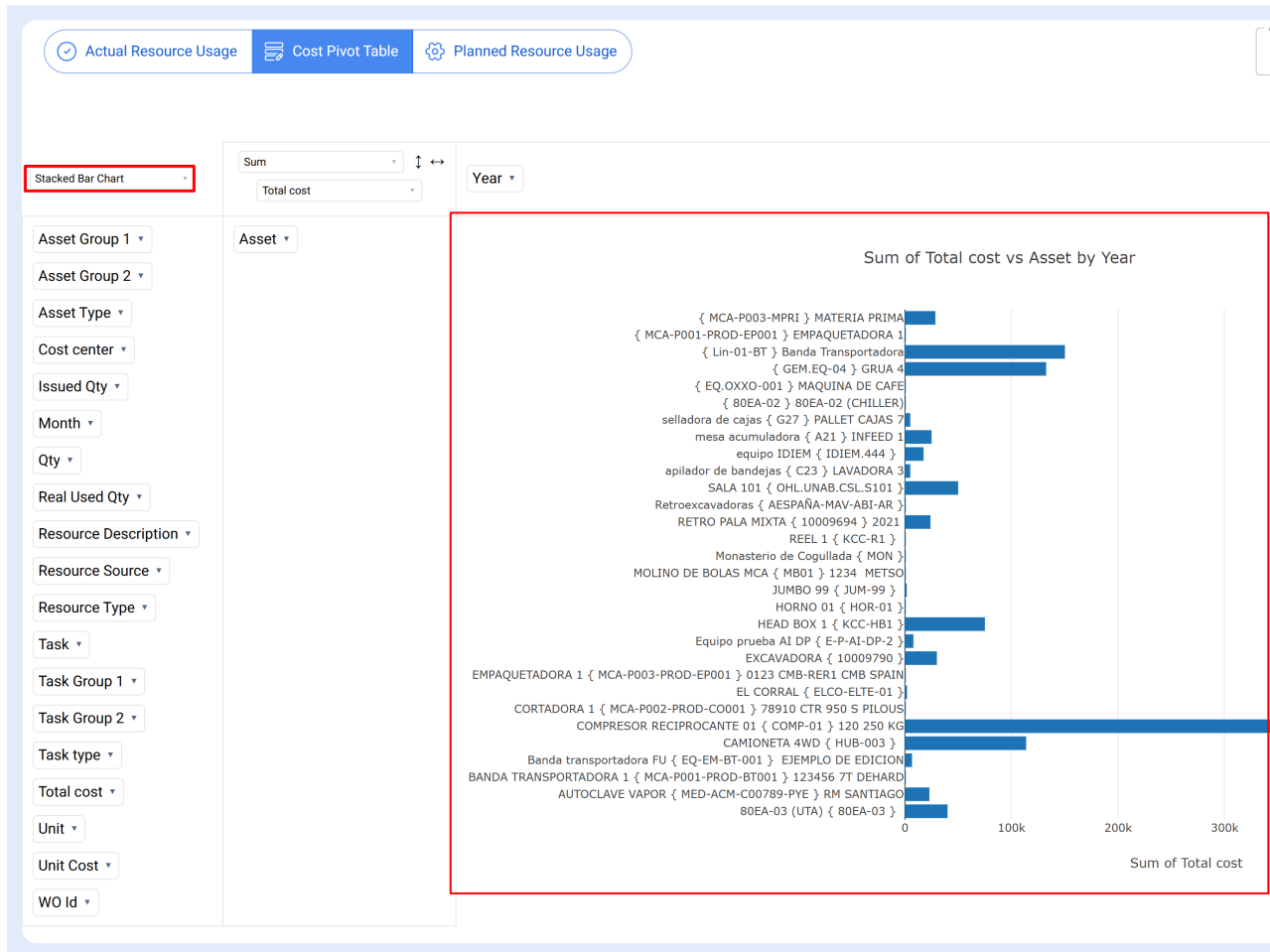


Recommended for:

- Comparing costs between assets or task types.
- Showing expense evolution by month or year.

5. Stacked Bar Chart

Stacks values of different categories in the same bar, showing their proportion within the total.



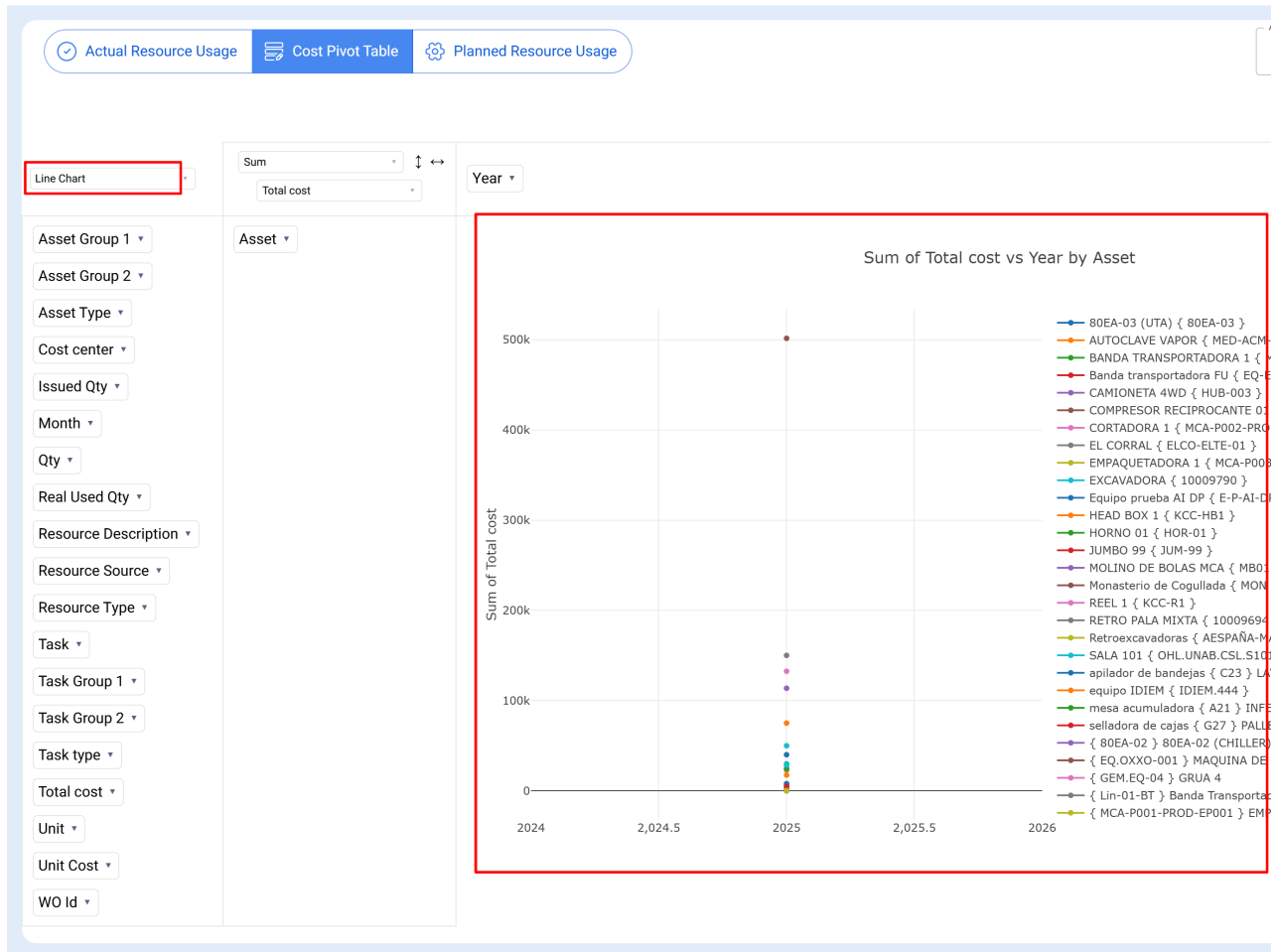
Recommended for:

- Analyzing the composition of total cost (for example, *labor, spare parts, and external services*).
- Comparing several cost centers or assets.

6. Line Chart

Displays data as a **continuous line** over time.

It is ideal for analyzing the evolution of costs or monthly trends.



Recommended for:

- Evaluating the behavior of preventive vs corrective costs throughout the year.
- Detecting progressive increases or decreases.

7. Dot Chart

Represents values with individual dots, allowing visualization of **dispersion or concentration** of data.

Each dot can represent an asset, OT, or task type.

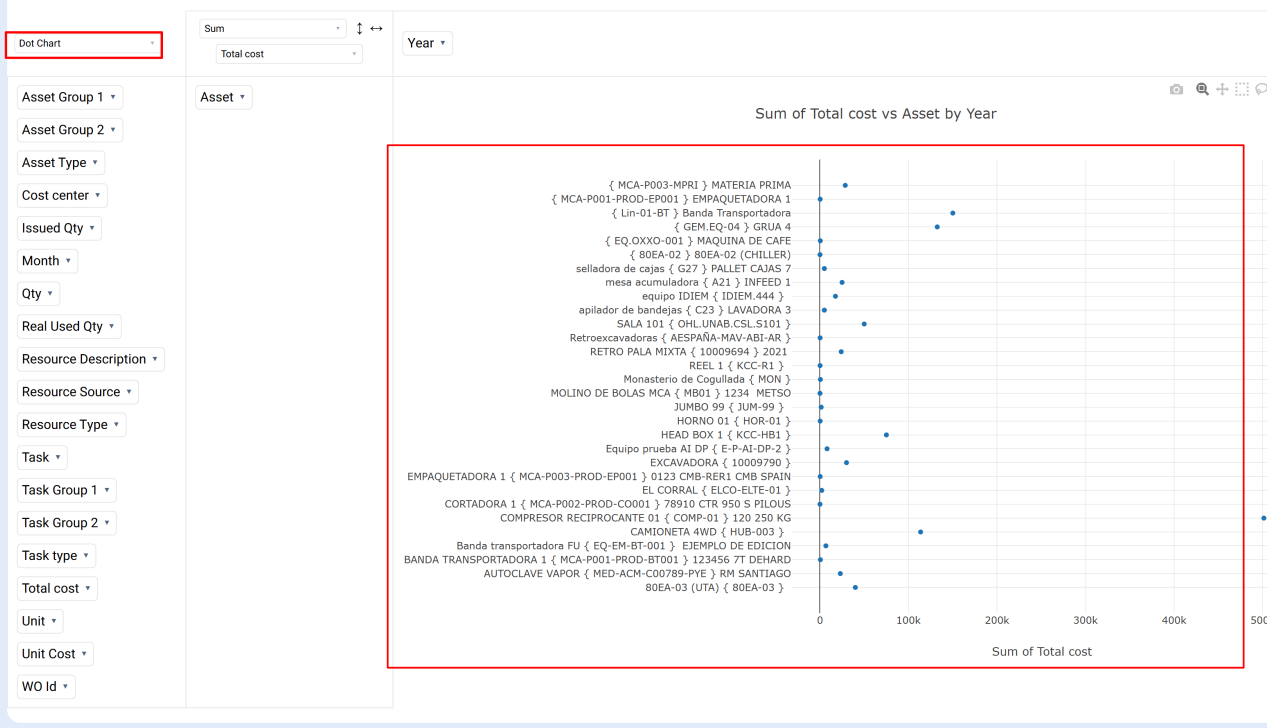
Actual Resource Usage

Cost Pivot Table

Planned Resource Usage

Actual Schedule Date

2025-10-03 / 2025-11-03



Recommended for:

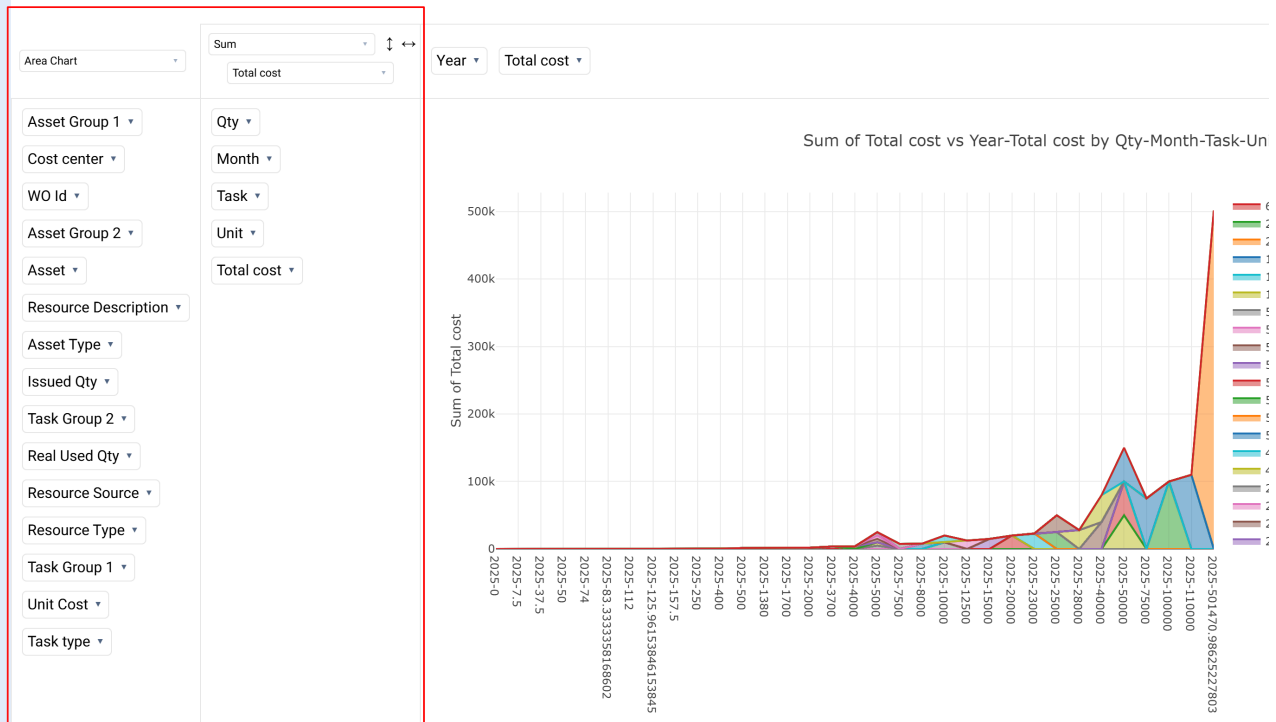
- Comparing the performance of different assets.
- Identifying outliers (for example, costs outside the normal range).

8. Area Chart

Similar to the line chart but with the area under the line filled with color, which highlights the total accumulated volume.

Allows visualization of trends and the magnitude of costs over a period.

Actual Resource Usage Cost Pivot Table Planned Resource Usage



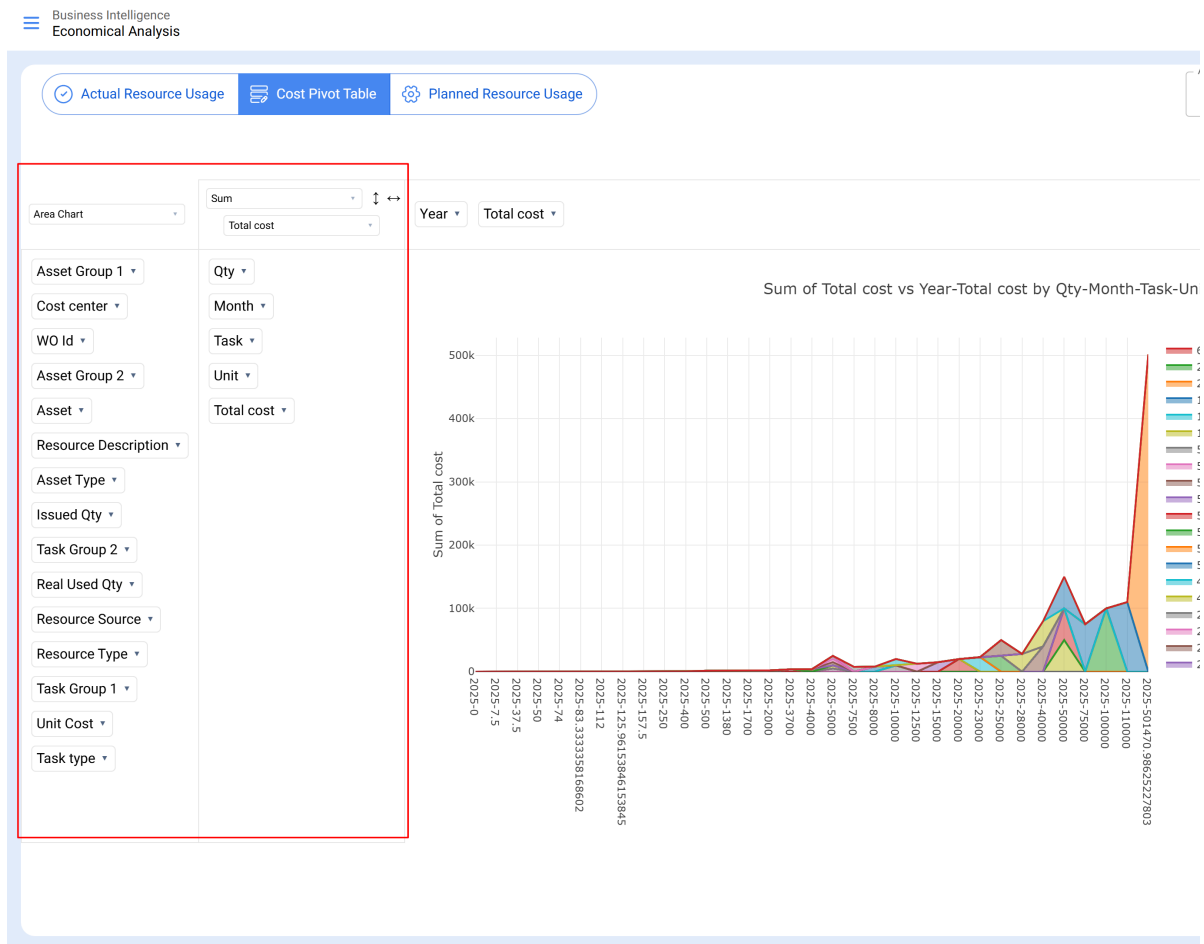
Recommended for:

- Analyzing the accumulated evolution of costs.
- Comparing spending growth between categories or periods.

Recommendations for Using the Views

- Switch between different chart types to gain complementary perspectives.

- Use the side filters (Cost Center, Resource Type, Asset Classification) to focus on relevant data.



Practical Example

If you want to visualize the **average total cost by task type**:

- Select Multiple Pie Chart or Column Chart.
- In **Measure**, use Average → Total Cost.
- Group by Task Type and Month.

The result will show how the average maintenance cost varies according to the task type over time.

Actual Resource Usage Cost Pivot Table Planned Resource Usage

Actual Schedule Date
2025-10-03 / 2025-11-03

