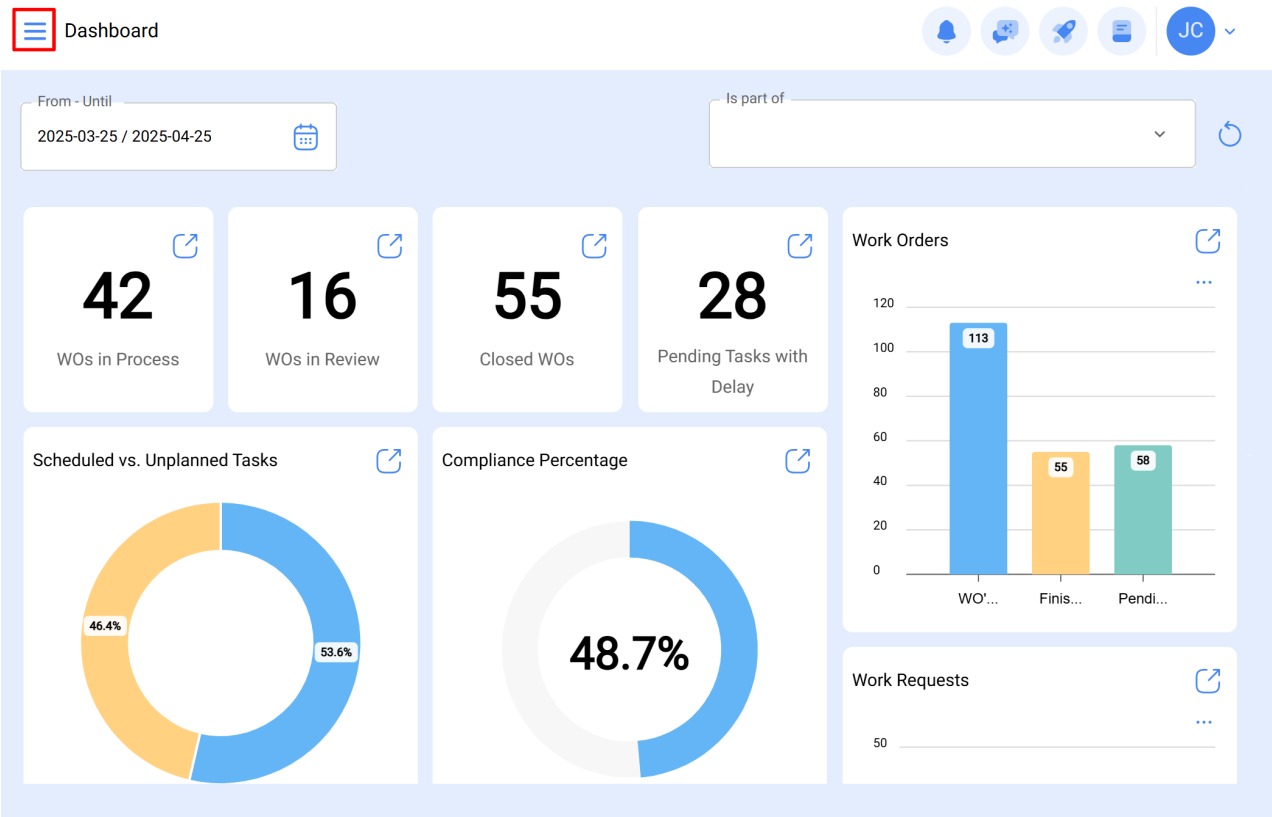


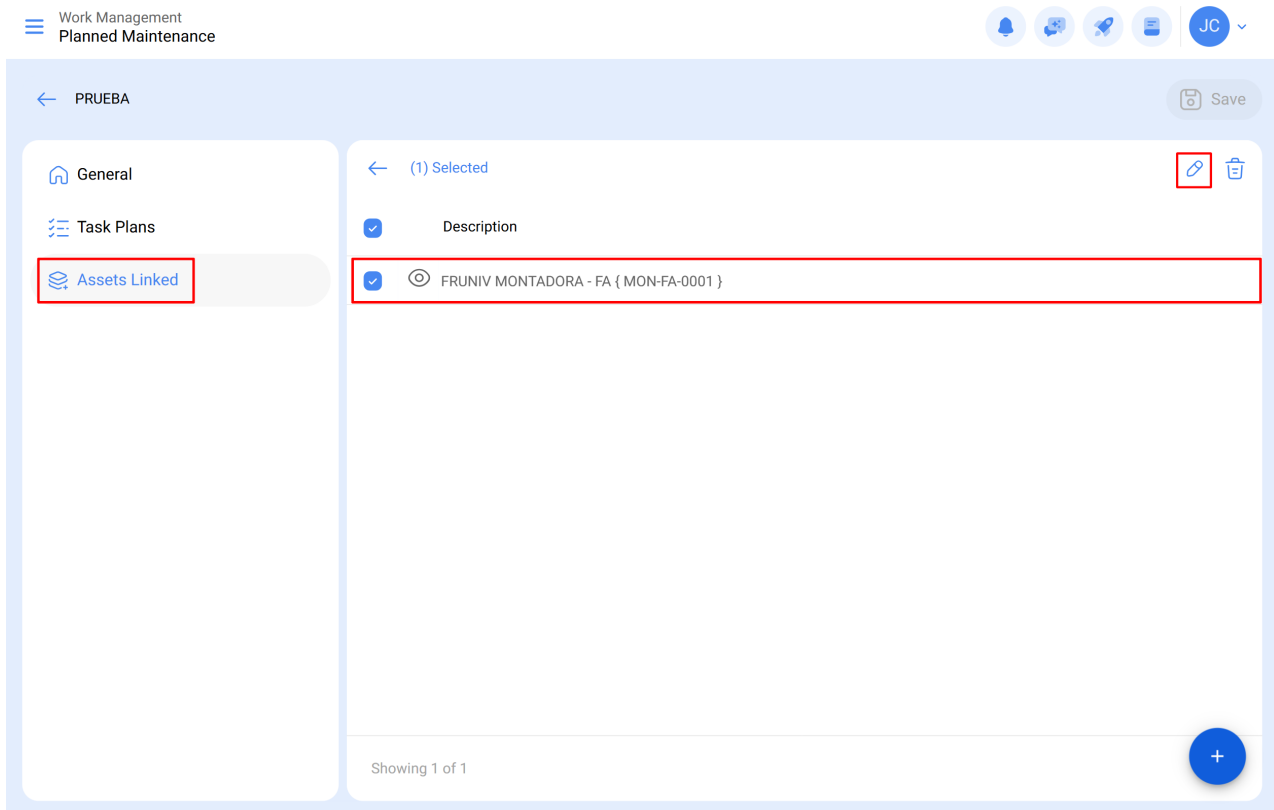
How to set the date of the latest maintenance for the triggers by date?

help.fracttal.com/hc/en-us/articles/24946921539981-How-to-set-the-date-of-the-latest-maintenance-for-the-triggers-by-date

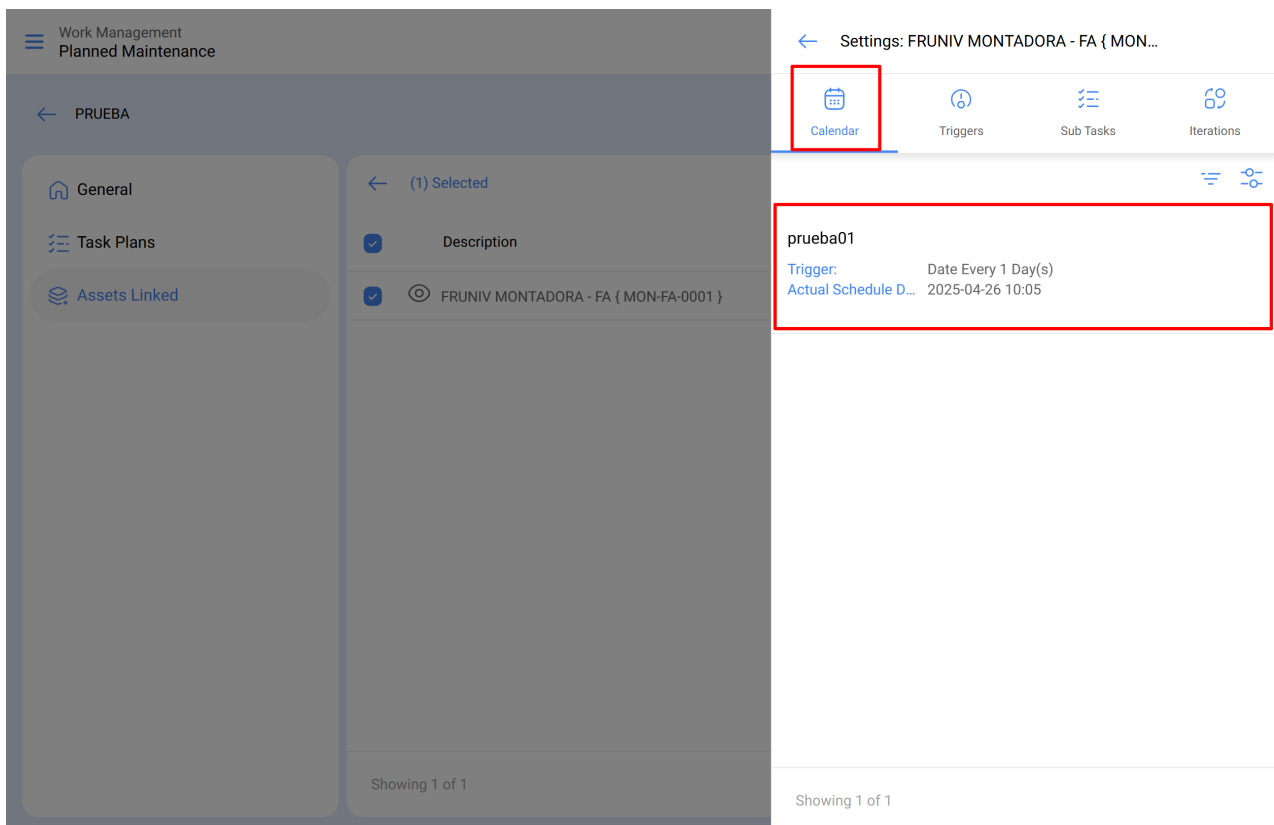
This option is ideal, since it allows you to independently set the next activation dates for each of the tasks associated with a plan, based on the dates on which the last maintenance of the asset in question was performed.

To do this, you must first go to the "Linked Assets" tab to select the asset for which you wish to set the dates of its last maintenance for the activation of the next tasks.





When you click on edit, a new window will open in which all the task configuration tabs will appear (Calendars, Triggers, Subtasks, Iterations), in which case you should select the calendar tab where all tasks with a trigger by date will be displayed.



Then, just select the task in question and the system will display a window where you can modify the date of the last maintenance and the date of the next activation for the task. Finally, after making the modification, click on the "Save" button to make the changes.

Work Management
Planned Maintenance

← PRUEBA

General

Task Plans

Assets Linked

← (1) Selected

Description

FRUNIV MONTADORA - FA { MON-FA-0001 }

Showing 1 of 1

←

Task

prueba01

Actual Schedule Date

2025-04-27 10:05

Last WO Date

2025-04-25 10:05

Work Management
Planned Maintenance

← PRUEBA

General

Task Plans

Assets Linked

← (1) Selected

Description

FRUNIV MONTADORA - FA { MON-FA-0001 }

Showing 1 of 1

← Settings: FRUNIV MONTADORA - FA { MON...

Calendar

Triggers

Sub Tasks

Iterations

prueba01

Trigger: Date Every 1 Day(s)

Actual Schedule D... 2025-04-27 10:05

prueba01

Showing 1 of 1

✓ Action Done

Showing 1 of 1

Note: It is important to mention that the configuration and modification of the dates of the last maintenance can be performed as long as the asset recently linked to the plan does not have a work order associated to the task to be modified, otherwise the modification will not be possible, since the next execution will be governed by the maintenance performed in the work order already issued.