

# "Grouped Card" widget in Fractal BI

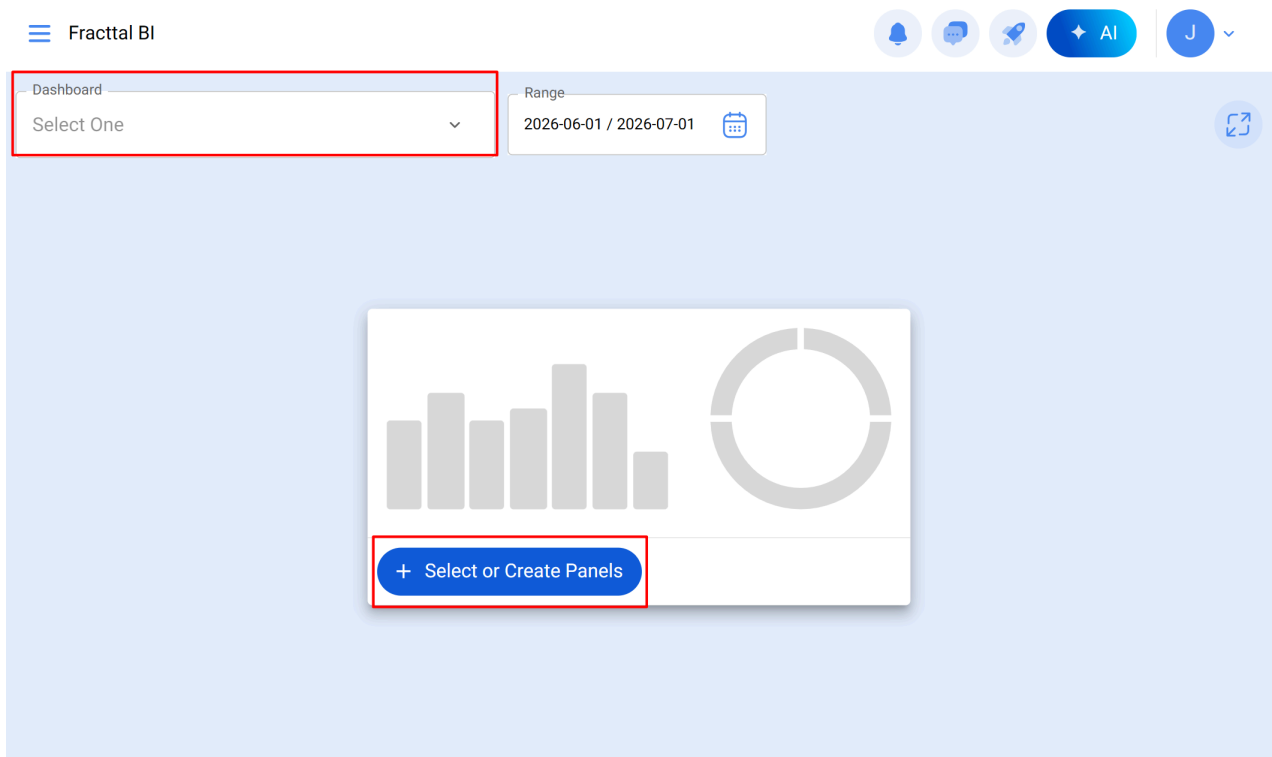
[help.fractal.com/hc/en-us/articles/47039607114509--Grouped-Card-widget-in-Fractal-BI](https://help.fractal.com/hc/en-us/articles/47039607114509--Grouped-Card-widget-in-Fractal-BI)

The Grouped Card is a Business Intelligence widget that consolidates the status of multiple meters from one or more assets into a single card, with configurable color ranges and labels per meter. This widget allows you to monitor several related meters in one view without needing to create a separate card for each one.

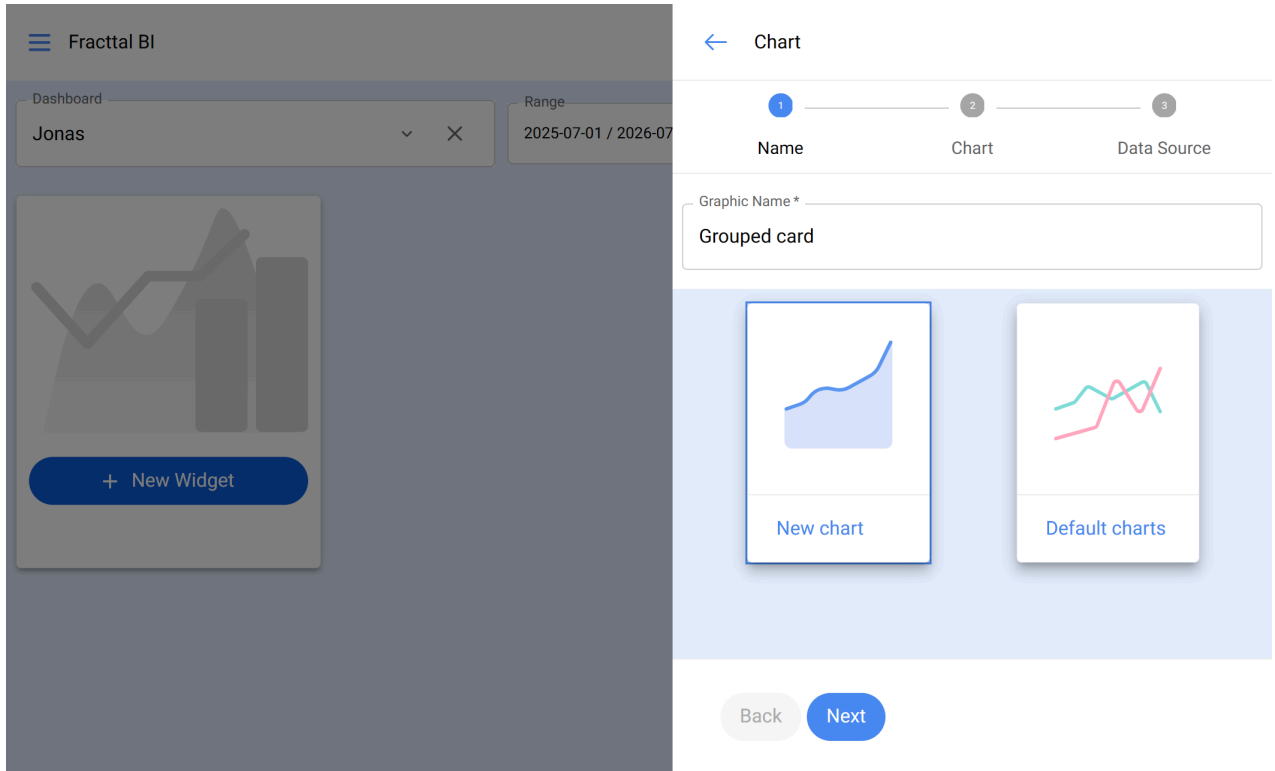
## How to add the Grouped Card widget

Creating the widget is done through a four-step wizard: **Name**, **Chart**, **Data**, and **Ranges**.

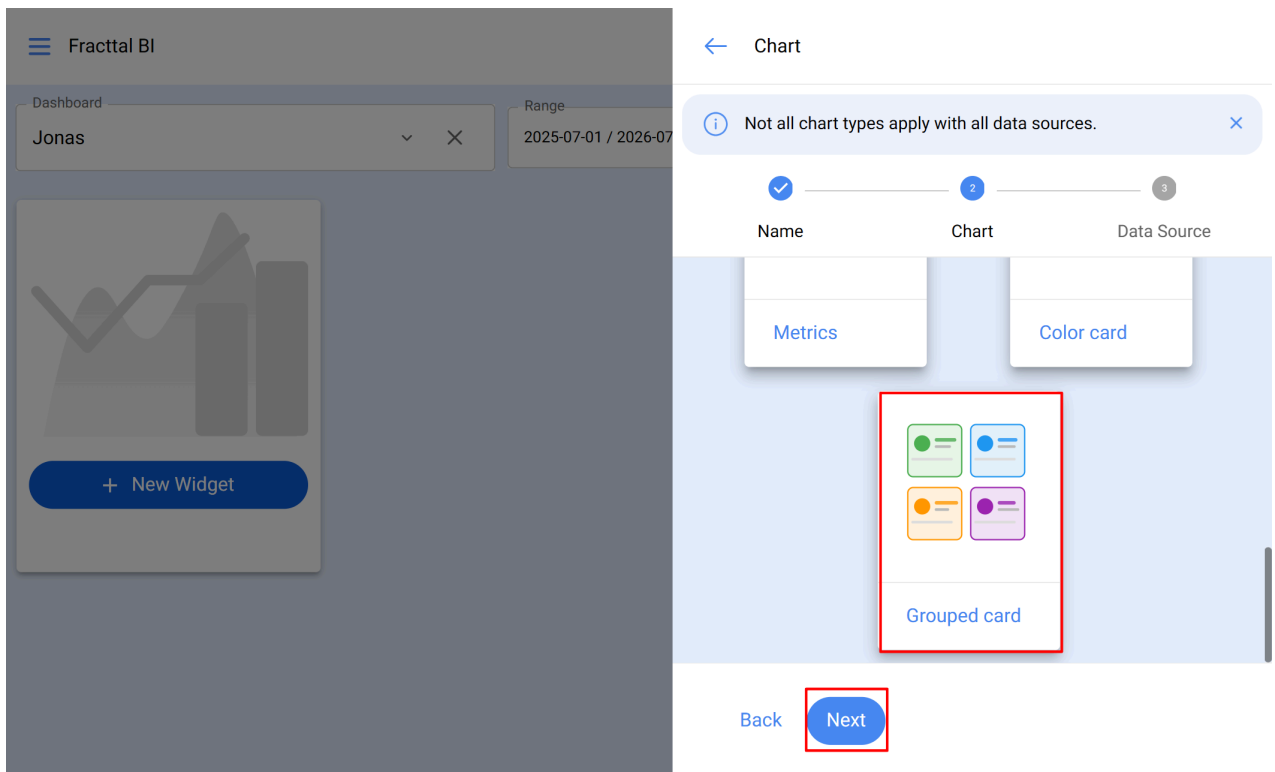
1. Go to the **Business Intelligence** module and select the **Fractal BI** submodule.
2. Open the dashboard where you want to place the widget and enter edit mode or click **New Widget**.



3. **Name:** enter the name and select the widget type.

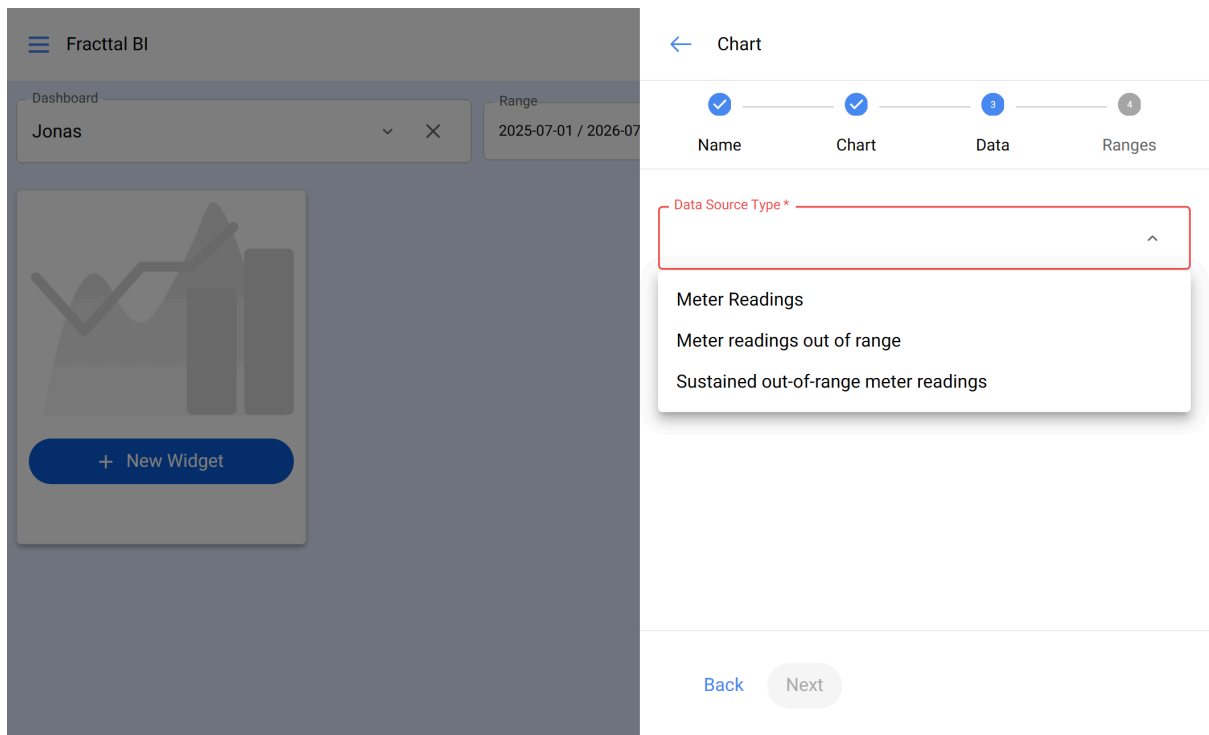


4. **Chart:** select the widget type **Group Card** and continue.



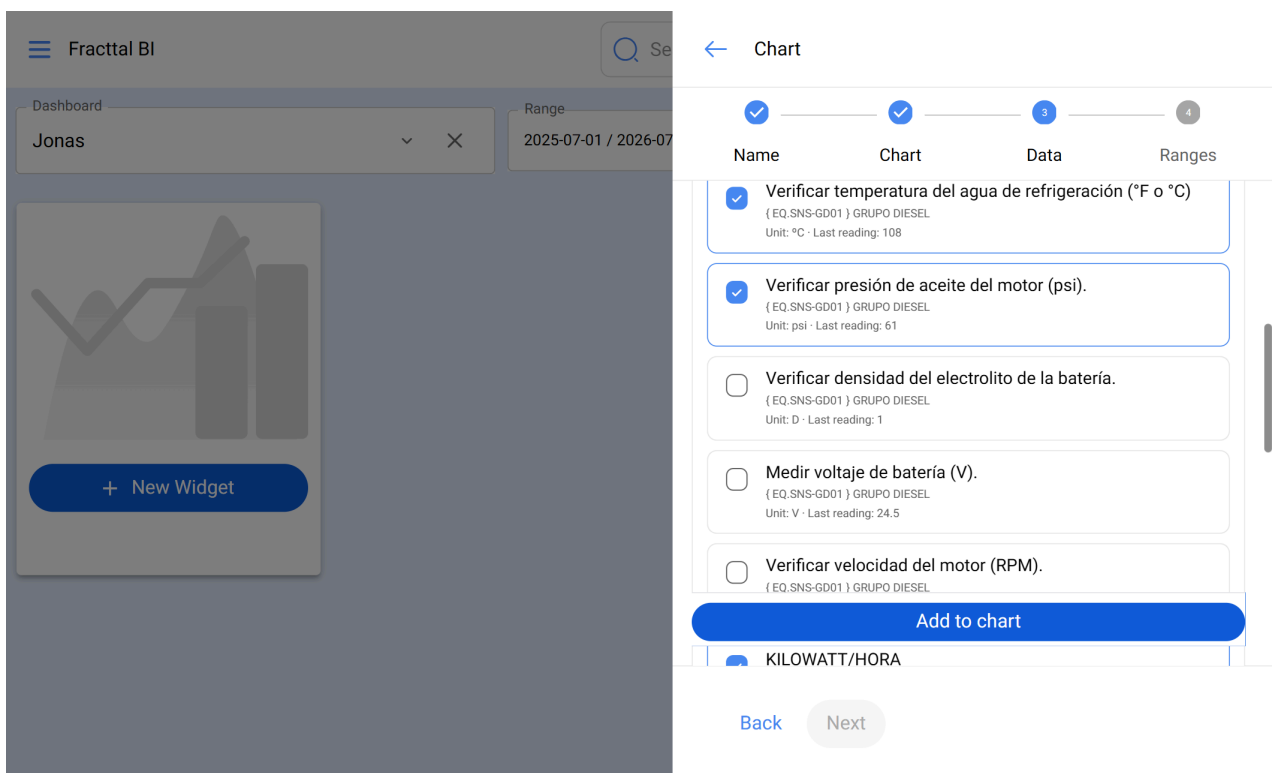
5. **Data:** define the metrics the card will display:

**Data source type:** select the source on which the widget will be built.



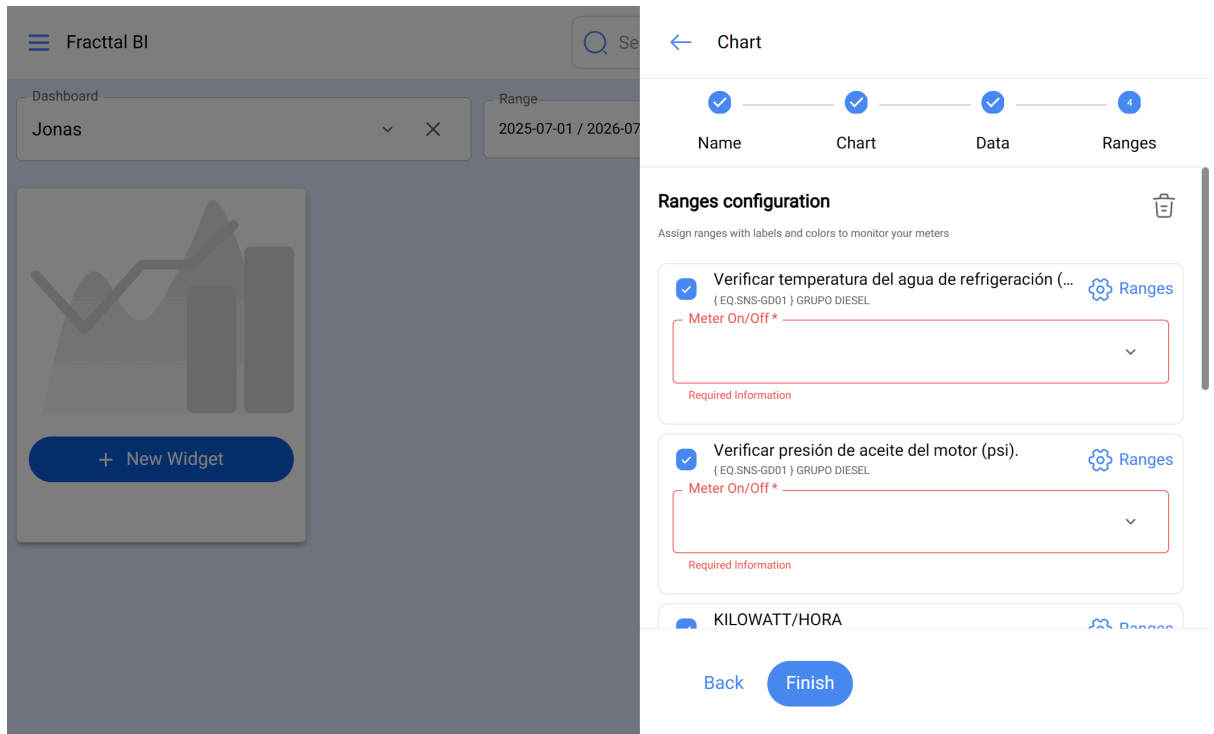
- **Data to display:** select the data or reading to be shown.
- **Asset:** select the associated asset.

6. Next, in the list of available meters, check the box for each meter that will be part of the display and click **Add**.

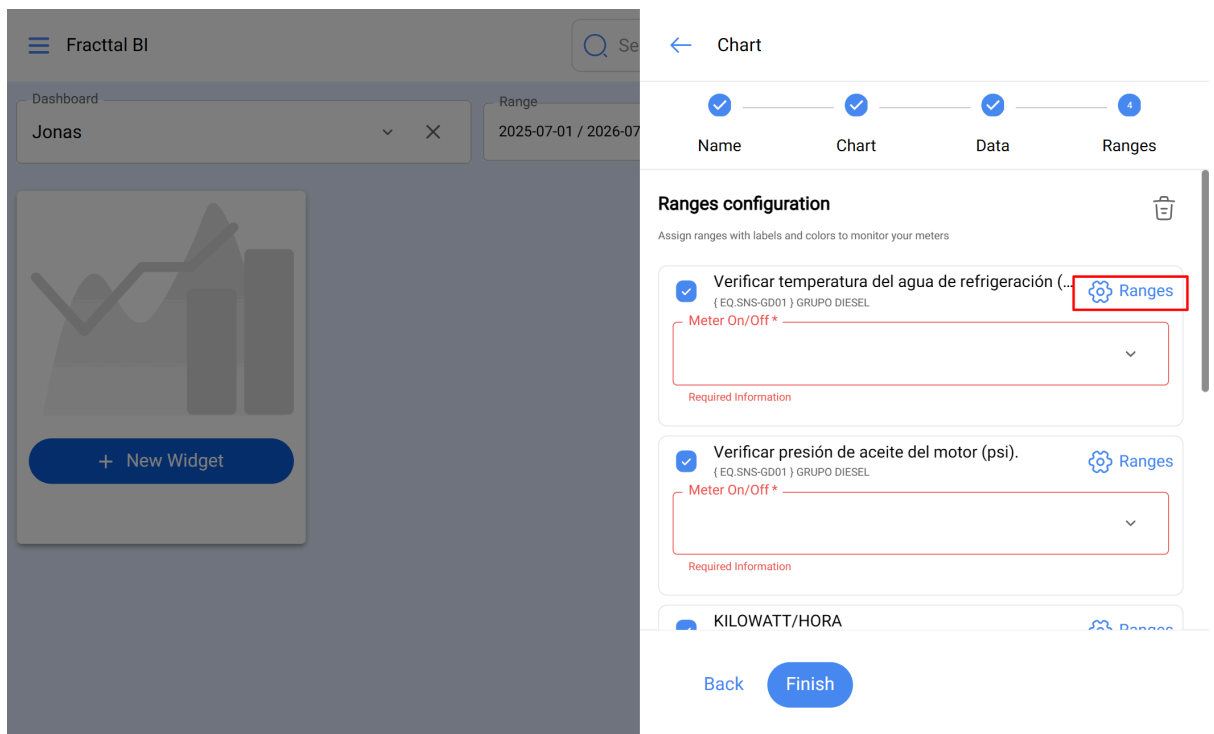


7. **Ranges:** customize the cards by assigning value ranges with labels and colors. For each selected meter:

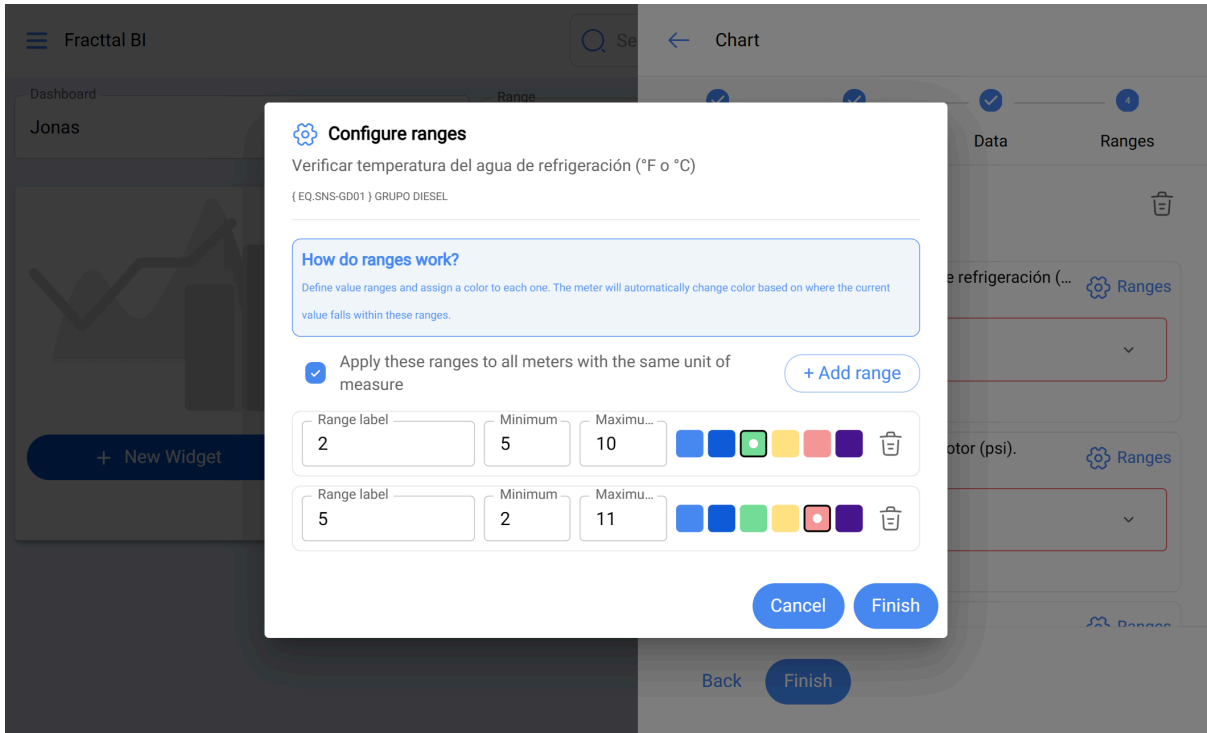
1. Fill in the required field **Meter**.



2. Click **Ranges** to open the **Configure Ranges** window.

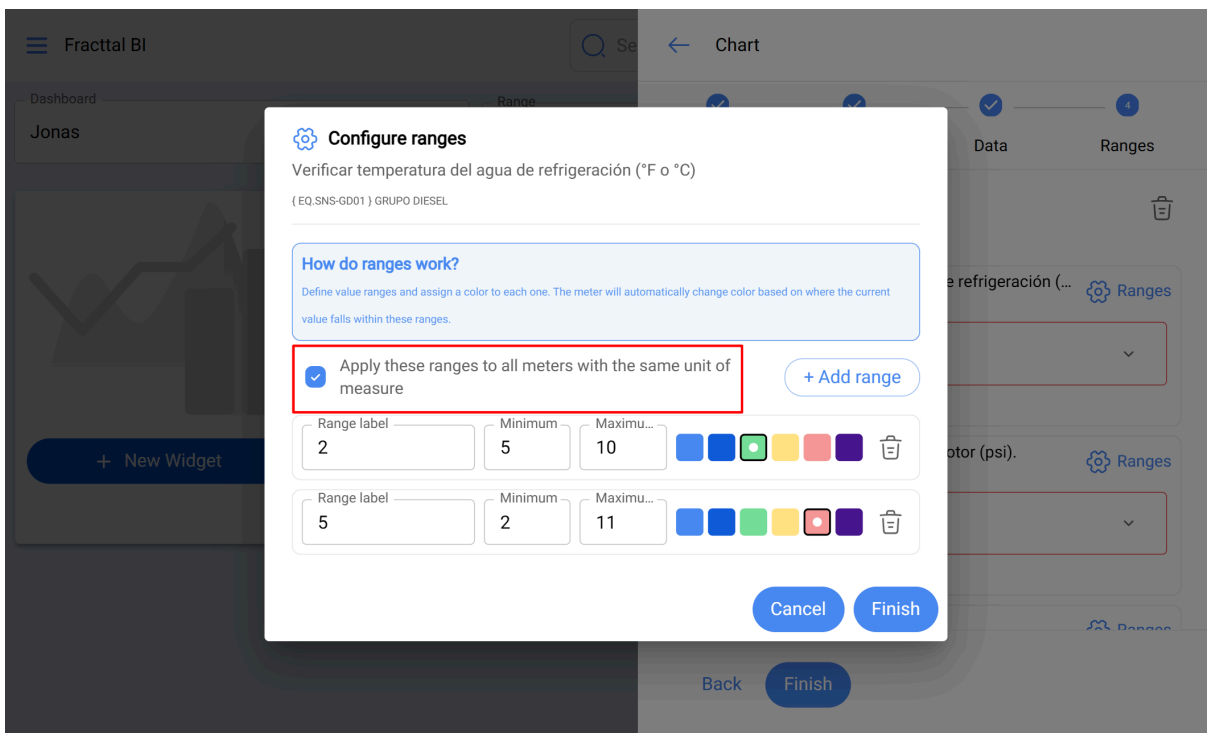


3. Click **+ Add range** for each range you need and define:

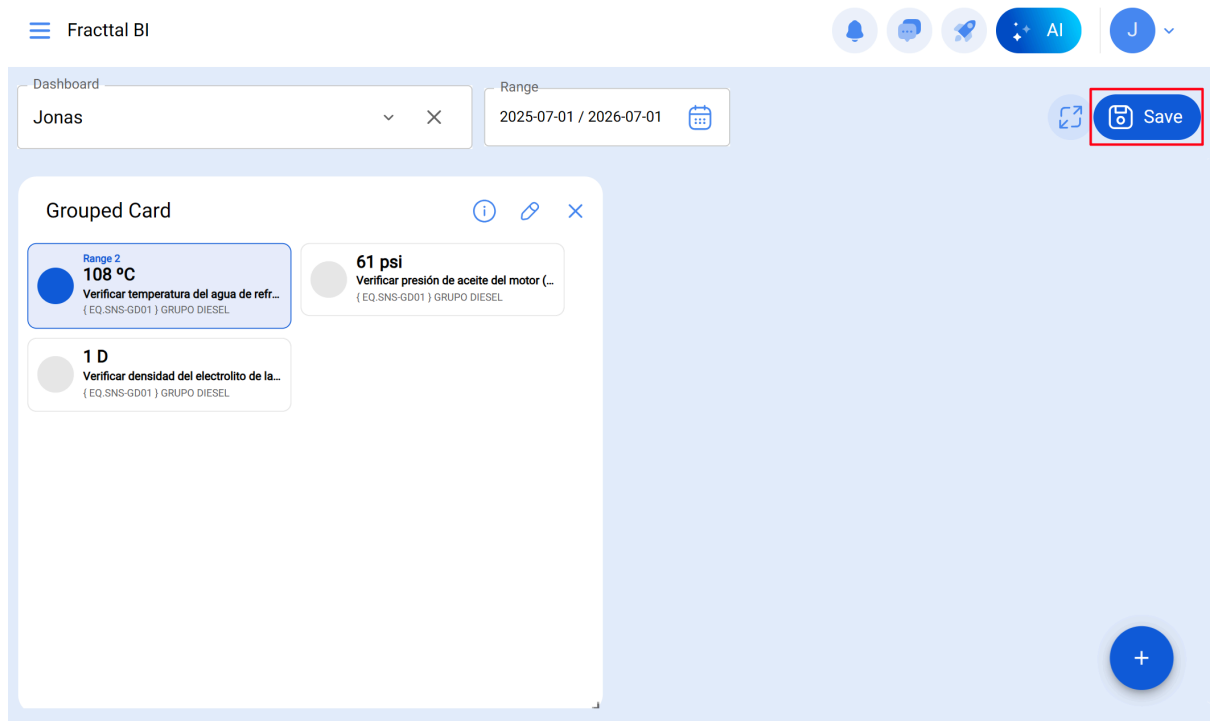


- **Range label**
- **Minimum and Maximum**
- **The color** that will represent that range

4. (Optional) Enable **Apply these ranges to all meters with the same unit of measurement** to replicate the configuration to other meters with that unit.



5. Click **Finish** to save the widget.



Once saved, the widget displays one card per value of the grouping field, with the corresponding metric for each group.

Each card automatically changes color according to the range in which its current value falls.