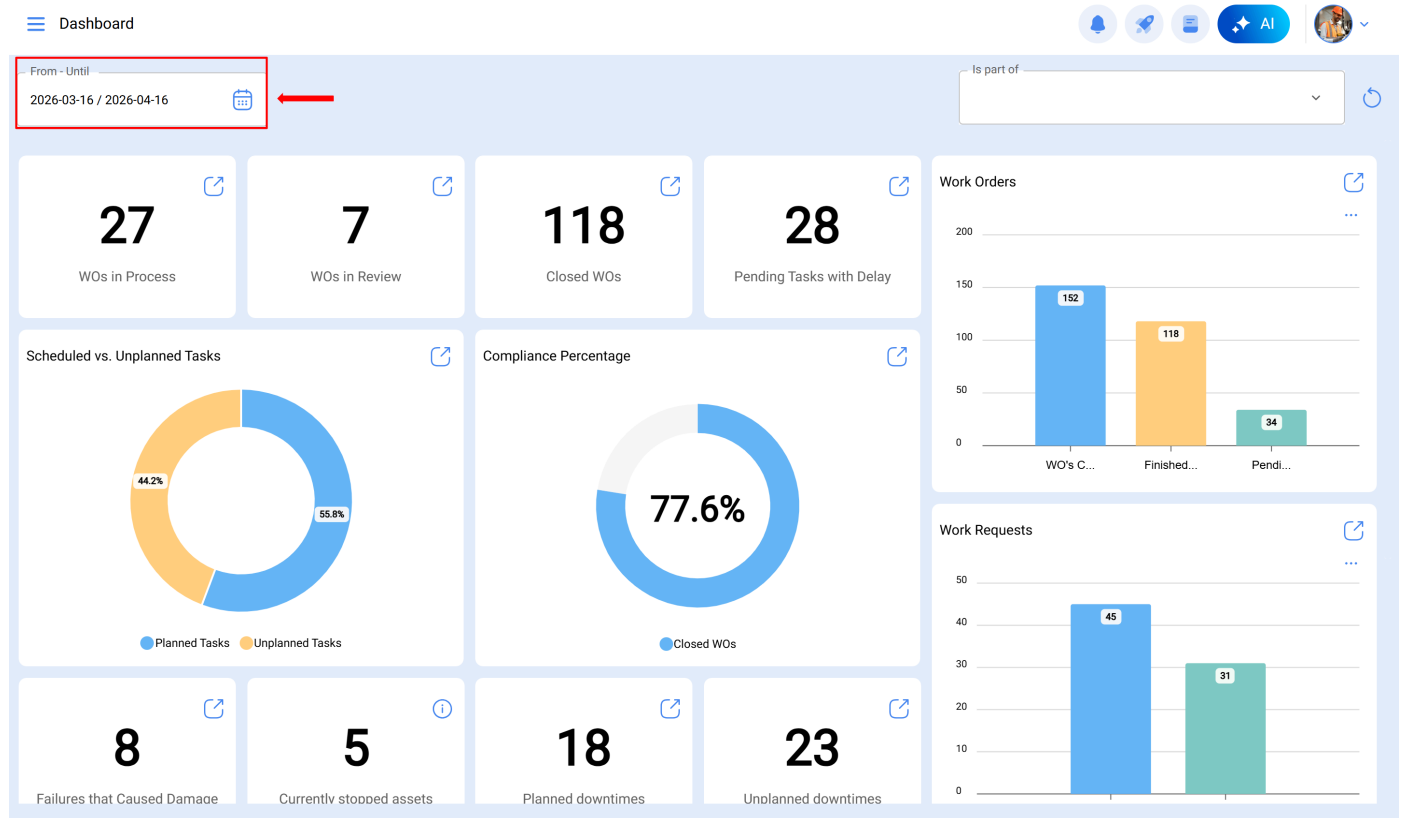
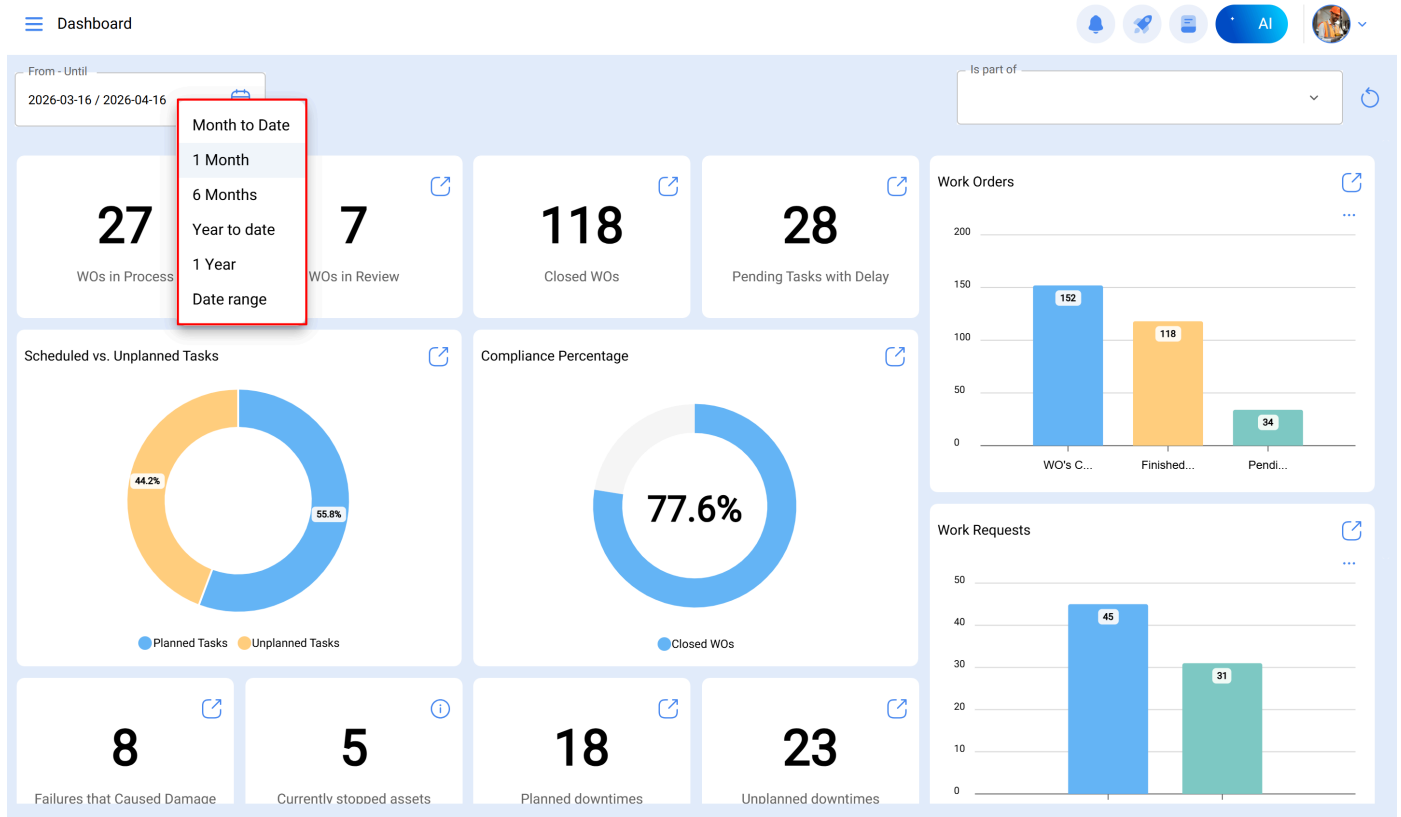


# How to apply date range filters? – Help Center

[help.fractal.com/hc/en-us/articles/25018967371917-How-to-apply-date-range-filters](https://help.fractal.com/hc/en-us/articles/25018967371917-How-to-apply-date-range-filters)

The dashboard, being completely dynamic, allows you to select different date ranges to display on the board. To do this, click on the date and then the system will show all available options:





Where you will have the following filter options:

- **Month to Date:** Shows information for the current month.
- **1 Month:** Displays data corresponding to a single month, counting backward from the current day to the selected month.
- **6 Months:** Offers visualization of the last 6 months, counting backward from the current day to the six-month period.
- **Current Year:** Shows information for the current year.
- **1 Year:** Allows viewing information for a full year, counting backward from the current day to the same period in the previous year.
- **Date Range:** Offers the option to select a specific date range for evaluation.