

# How to unlink items from the warehouse in Fractal One?

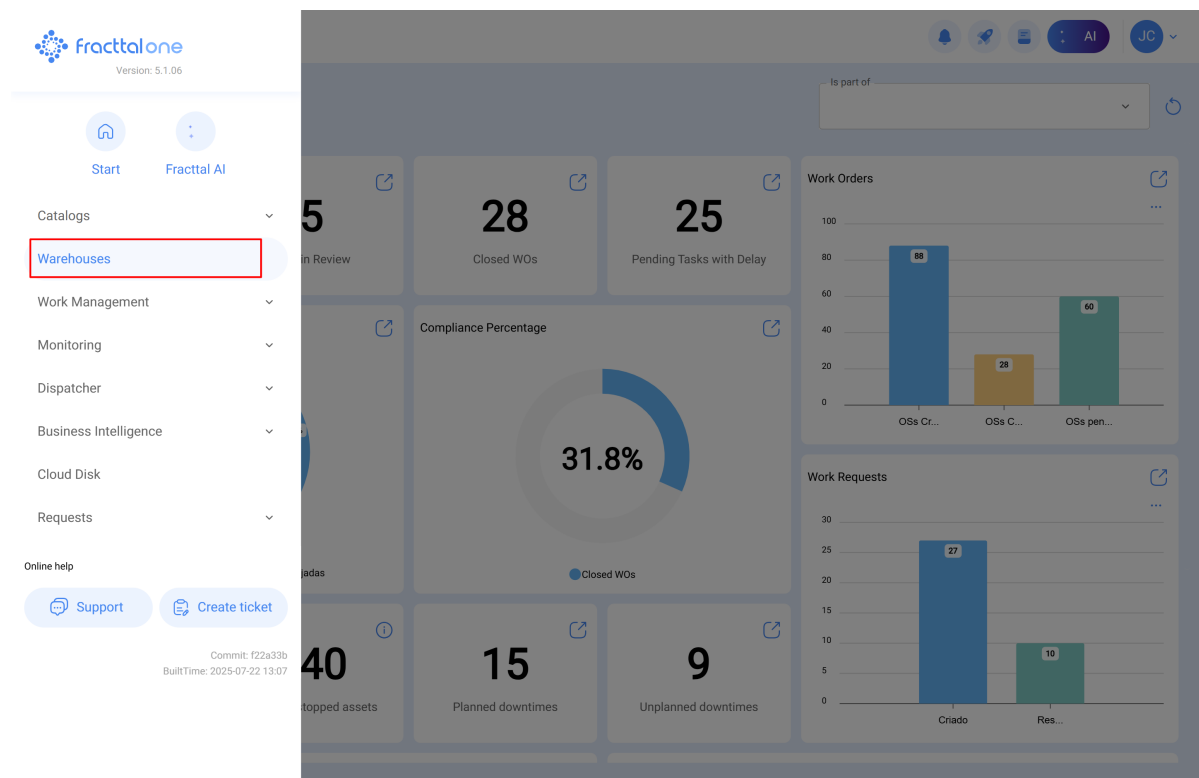
[help.fractal.com/hc/en-us/articles/38294809922701-How-to-unlink-items-from-the-warehouse-in-Fractal-One](https://help.fractal.com/hc/en-us/articles/38294809922701-How-to-unlink-items-from-the-warehouse-in-Fractal-One)

Unlinking **items from the warehouse** is a necessary process when components need to be replaced with similar ones. This procedure ensures the operational continuity of the machinery and maintains the integrity of the inventory. When unlinking a part, its status is updated in the system, allowing the replenishment process to continue without affecting inventory control or associated costs.

## Steps to unlink items from the warehouse

### Stage 1: Inventory Adjustment

1. On the main dashboard, access the **Warehouse** module.



2. Search by name or code of the warehouse where the item you want to unlink is located.

Warehouses

Search...

<input type="checkbox"/> Enabled	Code	Description	Movement ID	Purchase Order ID	Stock controlled by external i...
<input type="checkbox"/> Yes	Abotarm	Abot Armazem	MOV9720	OC2820	No
<input type="checkbox"/> Yes	ALM-AGRTR	AGRORENTAL TRACTORES	MOV41-CHI	OC15-CHI	No
<input type="checkbox"/> Yes	ALM-ACC-50	ALAMCEN GENERAL FRACTTAL 5.0	ALM-33-5.0	OC-15-5.0	No
<input type="checkbox"/> Yes	Z-0002	ALAMCEN SUCRUSAL 2	6	3	No
<input type="checkbox"/> Yes	Z-0003	ALAMCEN SUCRUSAL 3	2	1	No
<input type="checkbox"/> No	ALM-L	ALM	MOV-234-22	OC-33-22	No
<input type="checkbox"/> Yes	21587425	Alm-0009	23	3	No
<input type="checkbox"/> Yes	Identifique su almacen	alm-001	10	3	No
<input type="checkbox"/> Yes	5225414	Alm002	7	1	No
<input type="checkbox"/> Yes	25521	Alm-006	3	2	No
<input type="checkbox"/> Yes	2174691	alm-008	3	2	No
<input type="checkbox"/> Yes	21221210	Alm-008	4	3	No
<input type="checkbox"/> Yes	21616	Alm-008	3	2	No
<input type="checkbox"/> Yes	52121	Alm-009	13	2	No

Showing 50 of 488

3. Once found, click on the desired warehouse to access the corresponding options.

Warehouses

FRAC002025

<input type="checkbox"/> Enabled	Code	Description	Movement ID	Purchase Order ID	Stock controlled by external i...
<input type="checkbox"/> Yes	FRAC002025	FRACTTAL WAREHOUSE	7	1	No

Showing 1 of 1

4. Within the details of the selected warehouse, click on the stock submodule.

The screenshot shows the 'FRACTAL WAREHOUSE' interface. On the left sidebar, the 'Stock' submodule is highlighted with a red box. The main area displays a table with the following data:

Stock level	Description	Code	Stock
<input type="checkbox"/> <input checked="" type="checkbox"/>	ACEITE DE PRUEBA ( ACEITE DE PRUEBA )	ACEITE DE PRUEBA	0,00

The table is titled 'Total cost: R\$ BRL 0,00'. The status 'Showing 1 of 1' is at the bottom.

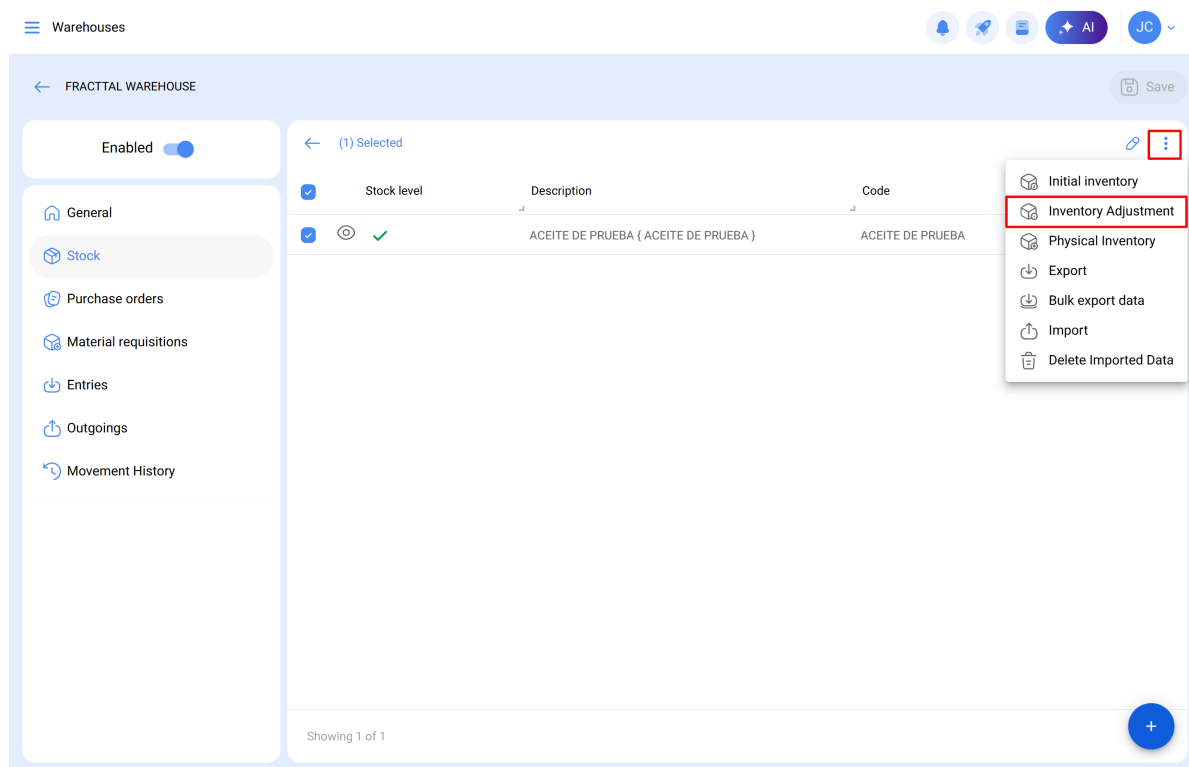
5. By clicking on the item, a general view will open showing relevant information about the item, such as description, inventory level, average cost, among other key data related to the stock.

The screenshot shows the 'FRACTAL WAREHOUSE' interface. On the left sidebar, the 'Stock' submodule is highlighted. The main area displays a table with the following data:

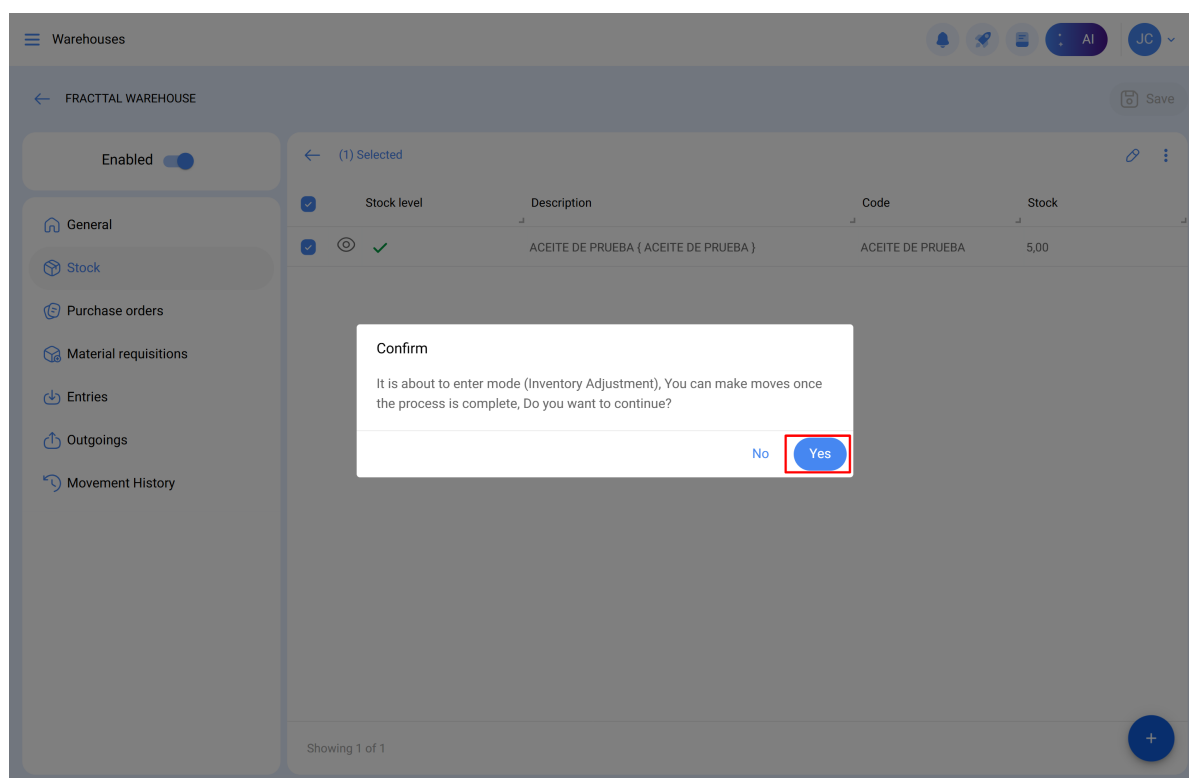
Stock level	Description	Code	Stock
<input checked="" type="checkbox"/> <input checked="" type="checkbox"/>	ACEITE DE PRUEBA ( ACEITE DE PRUEBA )	ACEITE DE PRUEBA	5,00

The table is titled '(1) Selected'. The status 'Showing 1 of 1' is at the bottom.

6. Click on the selection box corresponding to the item and then select the options icon to access additional actions. Choose the **inventory adjustment** option to proceed with the action.



7. In the confirmation box, the message will appear:  
*"You are about to enter inventory adjustment mode. You will be able to make movements once the process is complete. Do you wish to continue?"* Select **Yes** to confirm.



8. On the adjustment screen, edit the available quantity field and assign the value "0", which indicates that the item is no longer available in the inventory. This ensures that the item is not considered in future stock calculations.

Warehouses

FRACTTAL WAREHOUSE

Save

Enabled

General

Stock

Purchase orders

Material requisitions

Entries

Outgoings

Movement History

(1) Selected

Stock level

Description

Code

Stock

ACEITE DE PRUEBA ( ACEITE DE PRUEBA )

ACEITE DE PRUEBA

5,00

Showing 1 of 1

Warehouses

FRACTTAL WAREHOUSE

Stock (Inventory Adjustment)

Purchase orders

Material requisitions

Entries

Outgoings

Movement History

(1) Selected

Stock level

Description

ACEITE DE PRUEBA ( ACEITE DE PRUEBA )

Showing 1 of 1

Inventory Adjustment

Warehouse

FRACTTAL WAREHOUSE

Item

ACEITE DE PRUEBA ( ACEITE DE PRUEBA )

Stock

5

Unit Cost

R\$ BRL 0

Location

--

Maximum stock level

6

Minimum stock level

0

Order quantity

1

Warehouses

← FRACTTAL WAREHOUSE

Enabled ☒

General

Stock (Inventory Adjustment)

Purchase orders

Material requisitions

Entries

Outgoings

Movement History

← (1) Selected

Stock level	Description
<input checked="" type="checkbox"/> <input checked="" type="checkbox"/> <input checked="" type="checkbox"/>	ACEITE DE PRUEBA { ACEITE DE PRUEBA }

Showing 1 of 1

Inventory Adjustment

Warehouse  
FRACTTAL WAREHOUSE

Item  
ACEITE DE PRUEBA { ACEITE DE PRUEBA }

Stock  
0

Unit Cost  
R\$ BRL 0

Location  
--

Maximum stock level  
6

Minimum stock level  
0

Order quantity  
1

9. Upon completing this movement, finalize the inventory adjustment process.

Warehouses

← FRACTTAL WAREHOUSE

Enabled ☒

General

Stock (Inventory Adjustment)

Purchase orders

Material requisitions

Entries

Outgoings

Movement History

Total cost: R\$ BRL 0,00

☐ Stock level
 

Description	Code
ACEITE DE PRUEBA { ACEITE DE PRUEBA }	ACEITE DE PRUEBA

Showing 1 of 1

Save

Finish Inventory Adjustment

Export

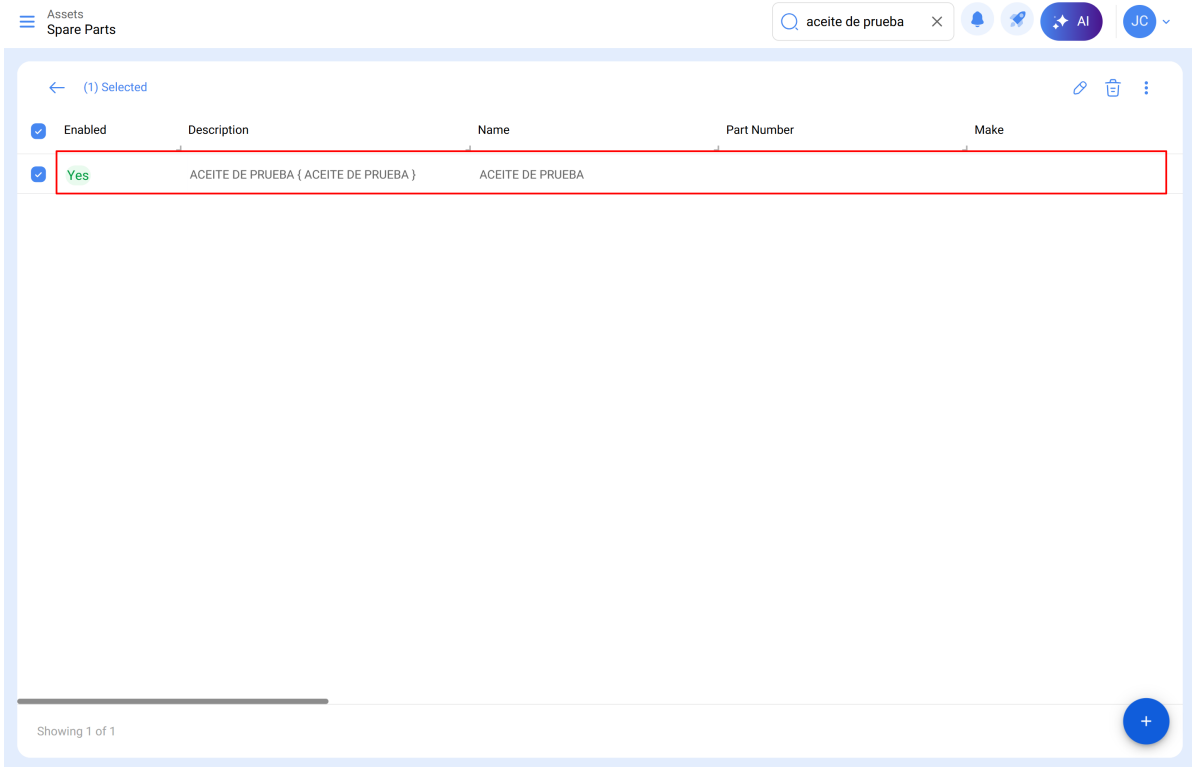
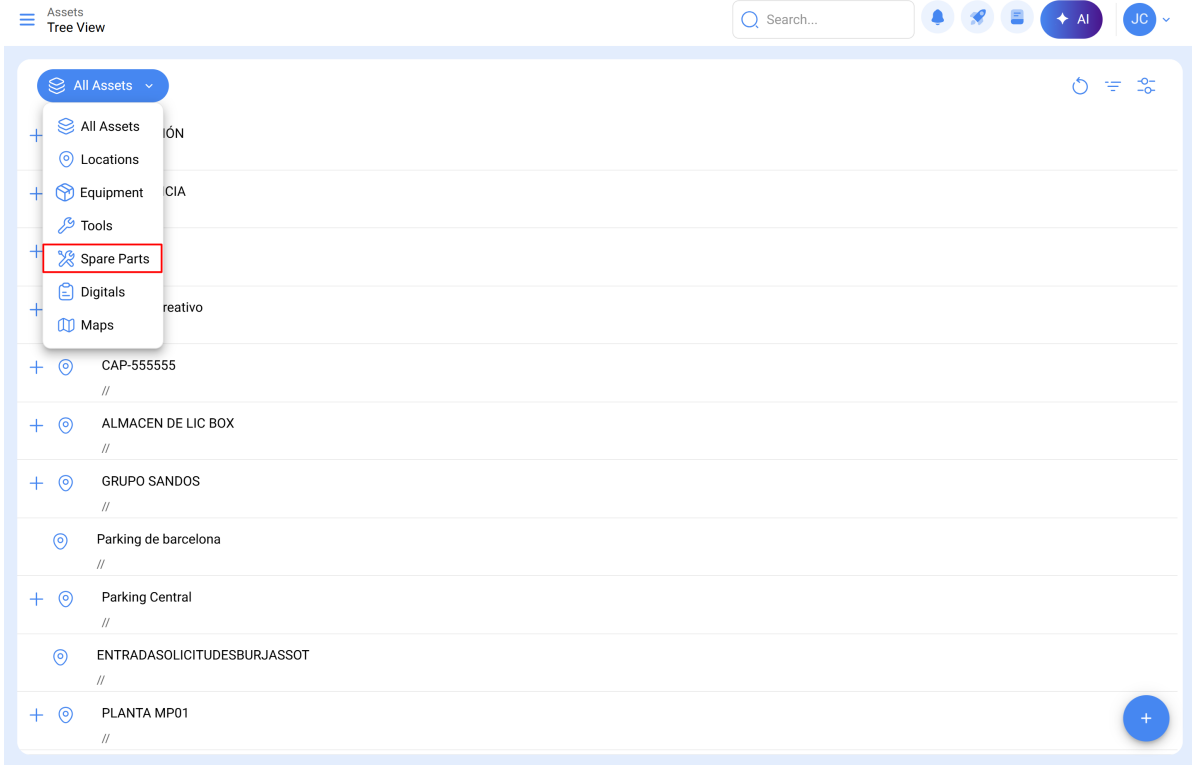
Bulk export data

Import

Delete Imported Data

## Stage 2: Unlinking the item from the warehouse

1. Access **Parts and Supplies** within the asset module to check the specific information of the item. Use the search bar to find the asset you need.



2. In the side menu, select the **destination warehouse** to which you want to unlink the asset.

← ACEITE DE PRUEBA ( ACEITE DE PRUEBA )

AI Agent

Out of Service: No

Enabled

General

Custom Form

Equivalences

Warehouses

Third Parties

Used in the assets

Historical

Attachments

Document Management

ACEITE DE PRUEBA

Unit

LITROS

Make

Model

Codigo SAP

Country

Barcode

Weight (lbs) Lb

Lead Time (days)

Type

Group 1

Group 2

Limit Acces to this location

//

Visible to all

Serial Control

Notes

3. Click on the corresponding selection box and then select the **Delete** option to unlink the item from the stock.

← ACEITE DE PRUEBA ( ACEITE DE PRUEBA )

AI Agent

Out of Service: No

Enabled

General

Custom Form

Equivalences

Warehouses

Third Parties

Used in the assets

Historical

Attachments

Document Management

Statistics

Last Unit Cost: R\$ BRL 0

Average Cost: R\$ BRL 25

Last date Recieved: 2025-07-24

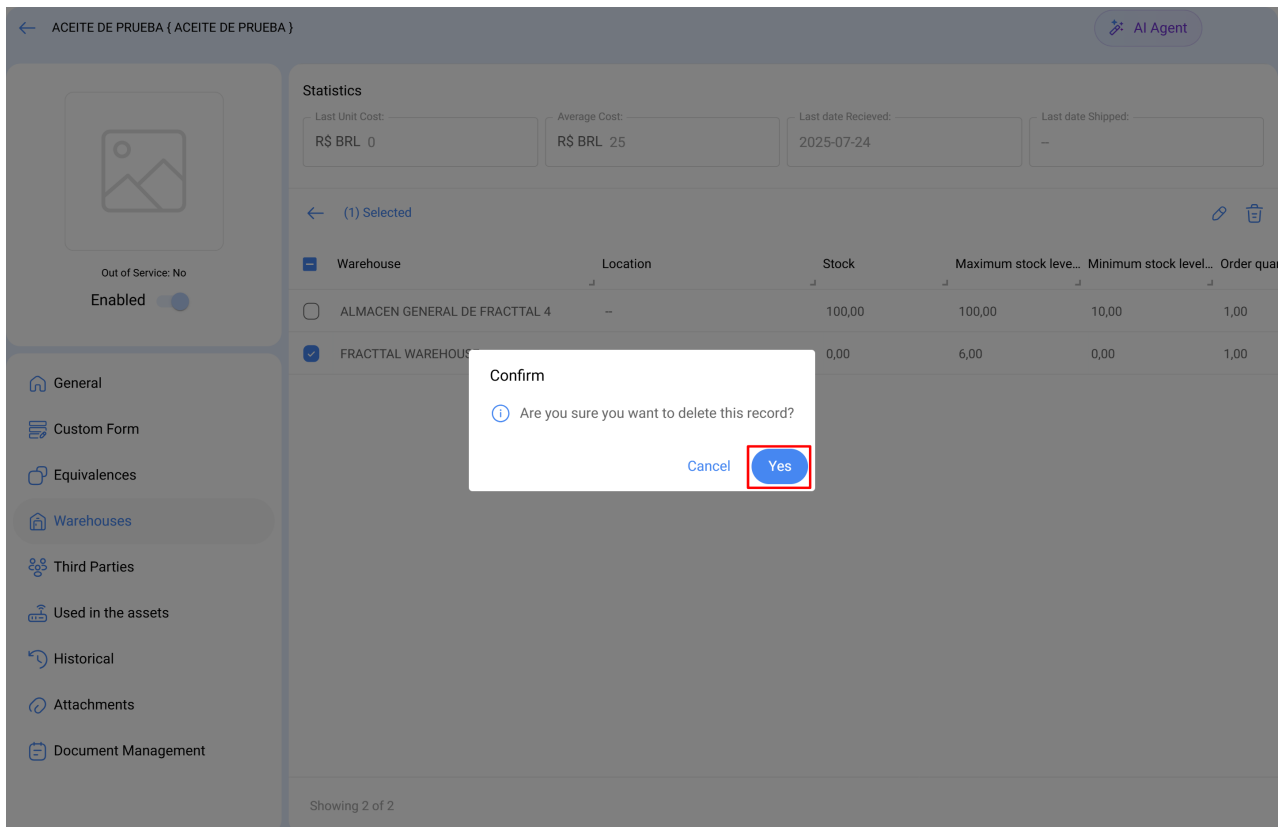
Last date Shipped: --

← (1) Selected

Warehouse	Location	Stock	Maximum stock leve...	Minimum stock level...	Order qua
<input type="checkbox"/> ALMACEN GENERAL DE FRACTTAL 4	--	100,00	100,00	10,00	1,00
<input checked="" type="checkbox"/> FRACTTAL WAREHOUSE	--	0,00	6,00	0,00	1,00

Showing 2 of 2

8/9



To confirm that everything has been done correctly, it is suggested to review the stock module of the selected warehouse.

