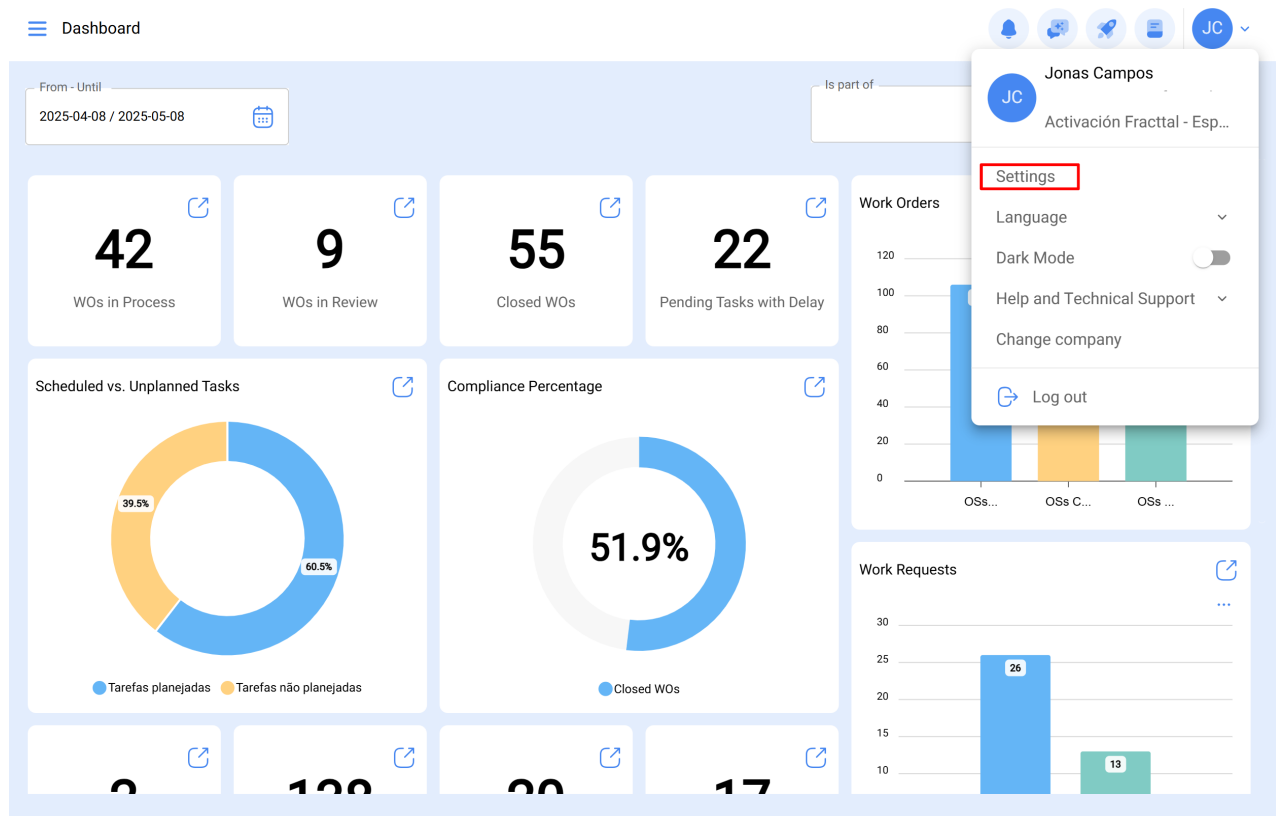


# How to connect Fractal One with Power BI?

[help.fractal.com/hc/en-us/articles/25231661913229-How-to-connect-Fractal-One-with-Power-BI](https://help.fractal.com/hc/en-us/articles/25231661913229-How-to-connect-Fractal-One-with-Power-BI)

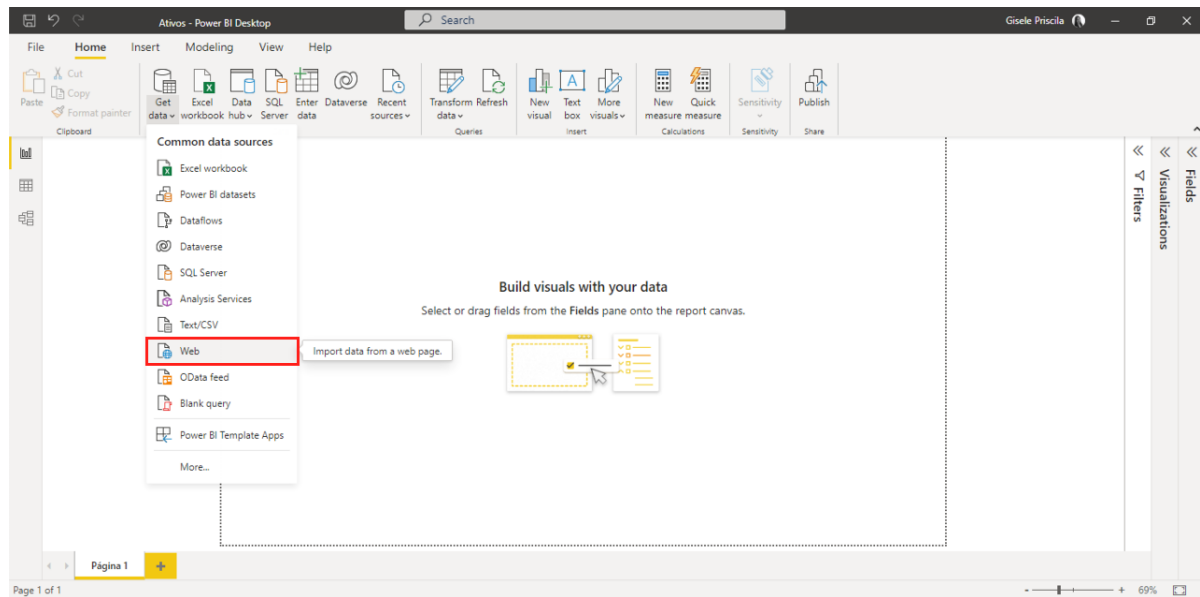
To connect to Power BI it is necessary to access Fractal, go to the **settings module** >> **API connection** and generate the **API Key** data.



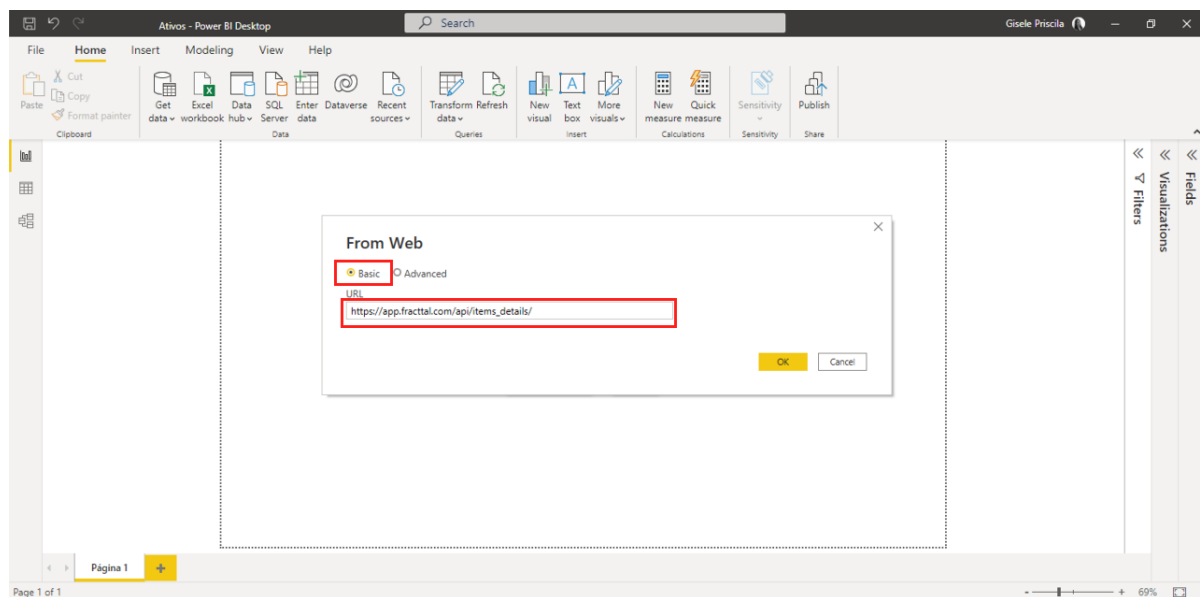
**NOTE:** Once the information is generated, it must be saved in a notepad, because if you generate it again, the Secret API will be changed for security reasons.

## Direct Connection

1. Access **Power BI Desktop** > click on **get data** > **Web**.

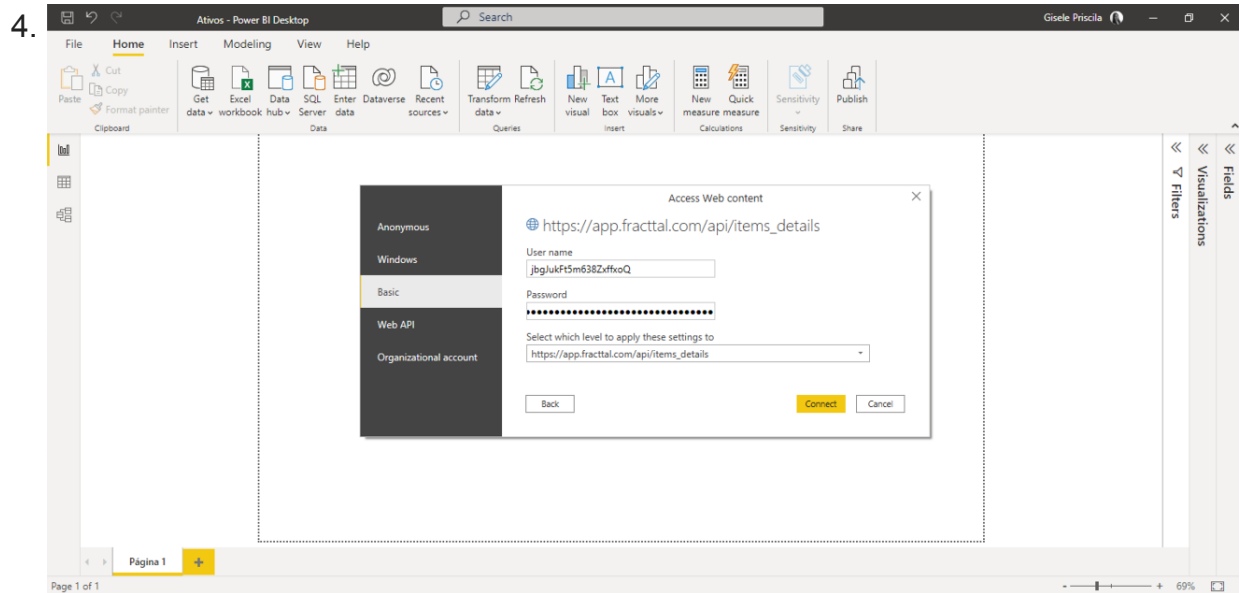
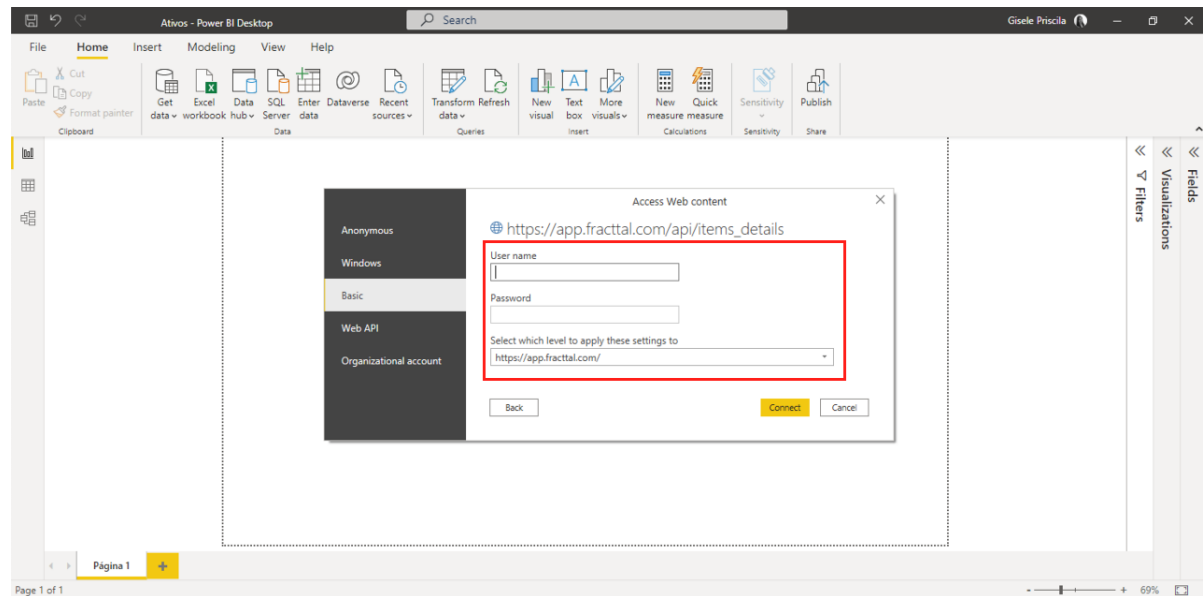


2. A window will open that tells us **"FROM WEB"** in which we must enter the URL of the API query

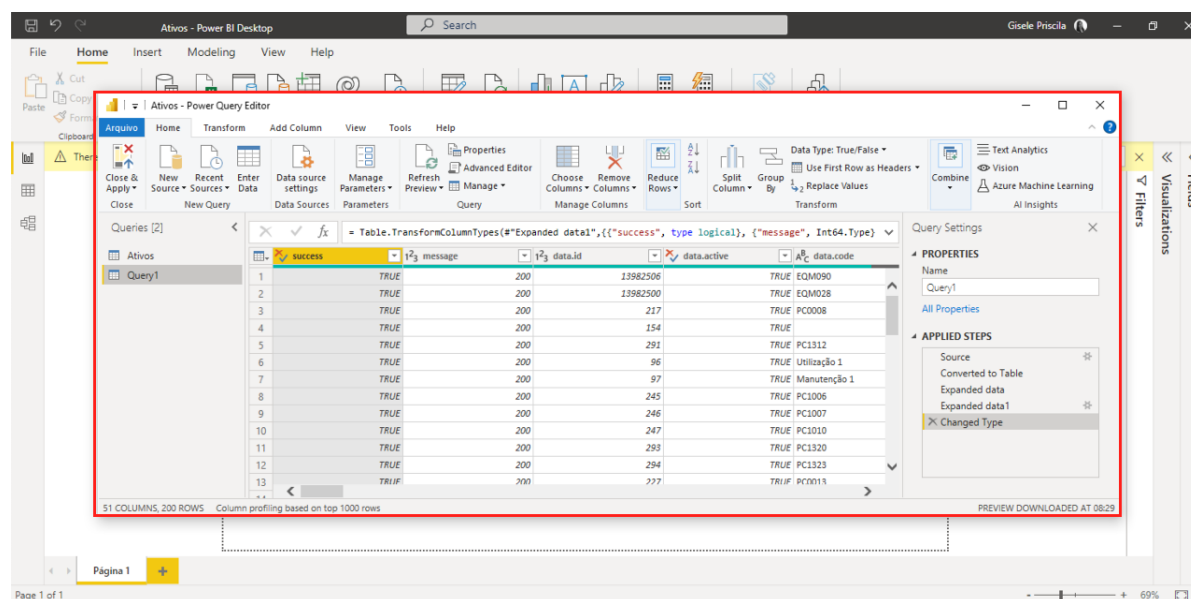


**NOTE:** To learn more about APIs, click [here](#).

3. We must go to **"BASIC"**, in the user name field enter the **"API Key"**, in the Password field enter the **"API Secret"**, then select the API we are going to query and finally select **"Connect"**.



5. Once the previous window loads, it shows us the details of the query made.



**Note:** You may also be interested in the following article