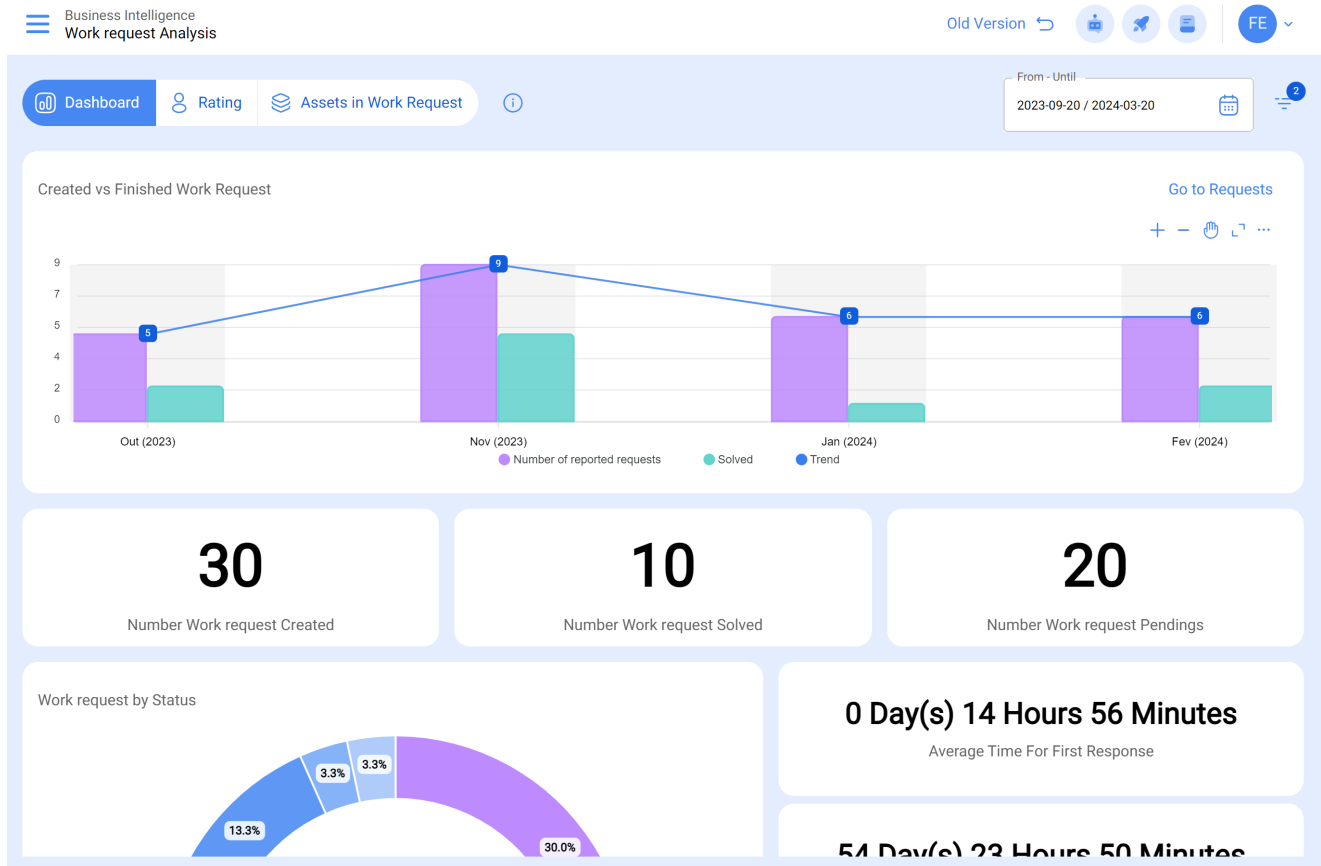


# Work Requests Analysis Dashboard

[help.fractal.com/hc/en-us/articles/25197339115661-Work-Requests-Analysis-Dashboard](https://help.fractal.com/hc/en-us/articles/25197339115661-Work-Requests-Analysis-Dashboard)

The dashboard found in the work requests analysis module corresponds to one of the 3 tabs that make up the module. The dashboard contains a series of graphical and numerical indicators that allow you to quickly examine the following aspects of work request management:



1. Comparative bar chart of the number of work requests created vs. finished, along with the trend line.
2. The total number of work request that have been created, solved and pendings.
3. Ring chart of total work request based on their current statuses
4. The average calculation of responses associated with the management of requests.