

What is a meter? And how to enter the meter module?

help2.fractal.com/hc/en-us/articles/24943838388365-What-is-a-meter-And-how-to-enter-the-meter-module

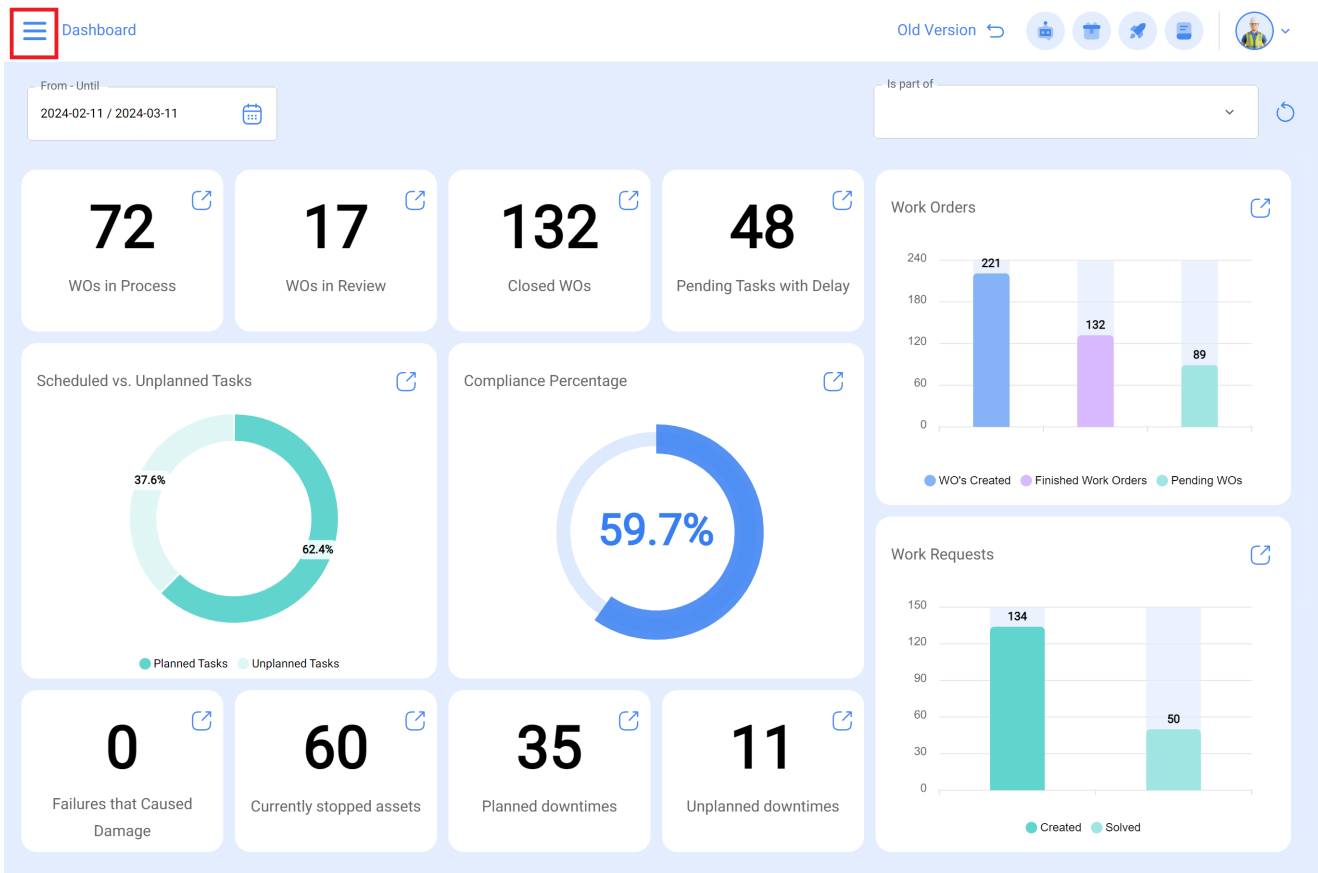
What is a meter?

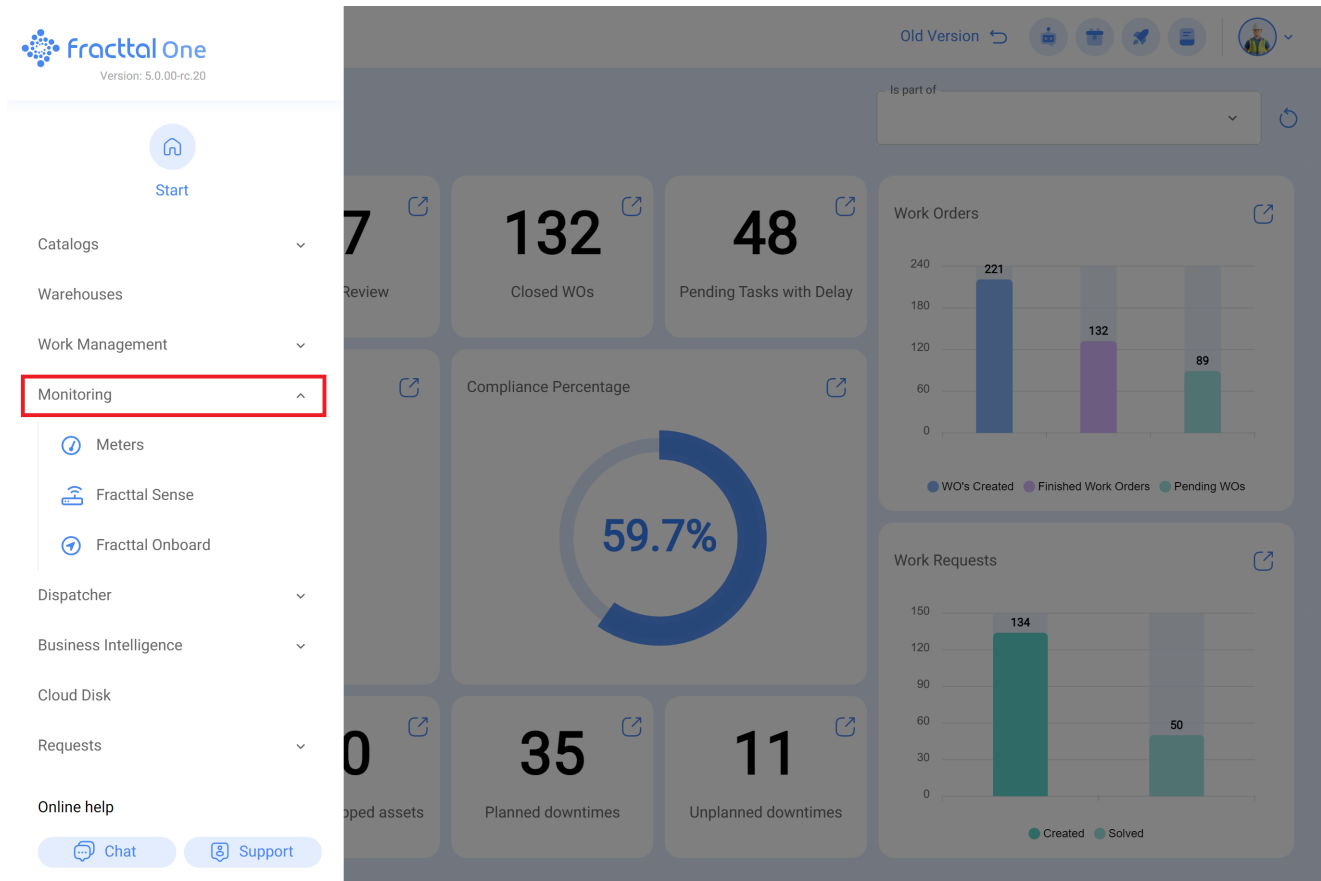
A meter is an instrument or device that quantifies and records the value of a physical or chemical magnitude, such as the volume of a liquid or gas, the amount of electricity consumed, pressure, temperature, among others. These devices are essential for monitoring, controlling, and managing various processes in different industries.

In this module, you will have complete traceability of all meter readings associated with assets, along with the recording and control of the activation of linked tasks.

How to enter the meter module?

To access this module, you must first click on the menu button, which you'll find in the upper left corner of the platform's main bar, and display the Monitoring menu; the system will show you the various submodules.





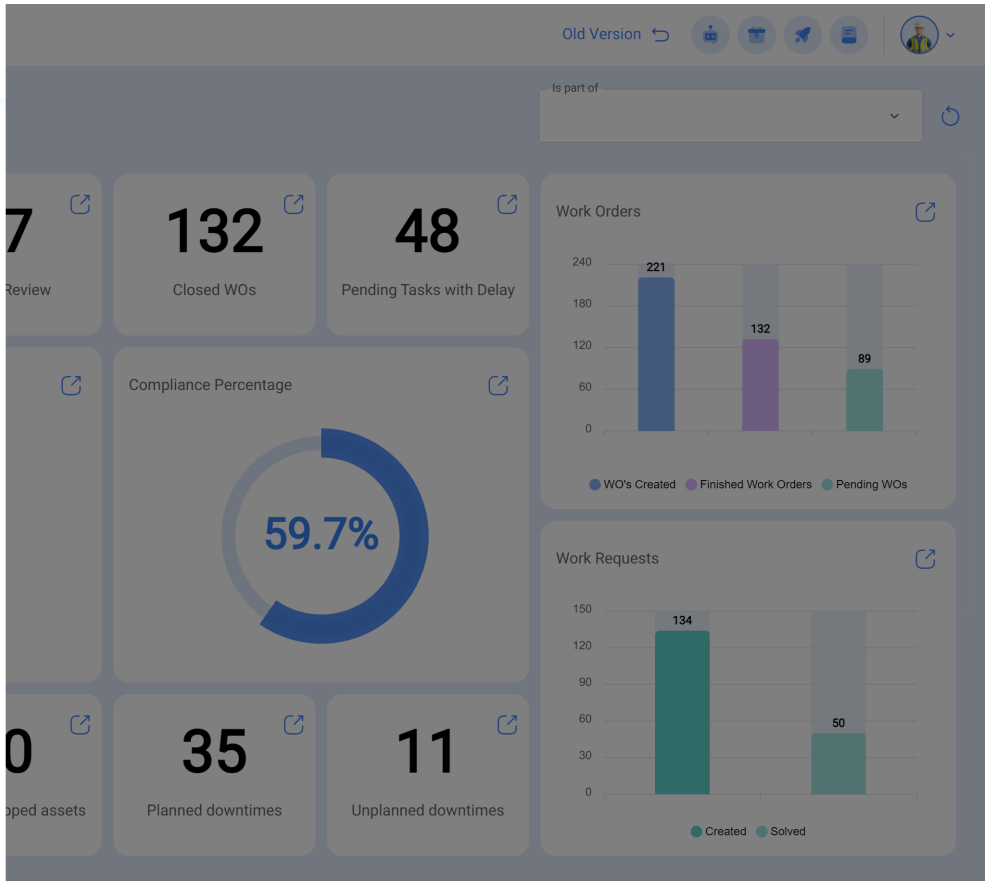
When you display the menu, you'll find the following submodules:

- **Meters**
- **Fracttal Box**
- **Fracttal On Board**

Then, when you just click on “Meters”, the system Will finally show you the meters that have been created in the system.

Start

- Catalogs
- Warehouses
- Work Management
- Monitoring
 - Meters**
 - Fractal Sense
 - Fractal Onboard
- Dispatcher
- Business Intelligence
- Cloud Disk
- Requests
- Online help
 - Chat
 - Support



Monitoring
Meters

Search...

Old Version

List Advanced

<input type="checkbox"/>	Is part of	Description Sensor / Meter	Enabled	Serial number	Is a Counter / Accumulator...
<input type="checkbox"/>	TRACTOR KUBOTA #2 { TK-02 } KUBOTA	Horometro TK-02	Yes	H TK-02	Yes
<input type="checkbox"/>	JUMBO HIDRAULICO { J-101 } SANDVICK	TEMPERATURA DEL MOTOR	Yes		No
<input type="checkbox"/>	JUMBO HIDRAULICO { J-101 } SANDVICK	HORAS DE SERVICIO	Yes		Yes
<input type="checkbox"/>	JUMBO HIDRAULICO { J-102 } SANDVICK	voltaje jumbo	Yes	4321	Yes
<input type="checkbox"/>	COMPRESOR #2 { CO-02 } INGERSOLL RAND	Horómetro COMPRESOR #2 INGERSOLL RA...	Yes	HCO-02	Yes
<input type="checkbox"/>	COMPRESOR #2 { CO-02 } INGERSOLL RAND	Sensor1	Yes		No
<input type="checkbox"/>	COMPRESOR #2 { CO-02 } INGERSOLL RAND	Presión Dialum	Yes		No
<input type="checkbox"/>	COMPRESOR #3 { CO-03 } AIR MAN HOKUETSU	presión	Yes	123	No
<input type="checkbox"/>	COMPRESOR #3 { CO-03 } AIR MAN HOKUETSU	Horometro Compresor #3	Yes	HC#3	Yes
<input type="checkbox"/>	COMPRESOR #3 { CO-03 } AIR MAN HOKUETSU	Horometro Compreser #3	Yes	HC #3	Yes
<input type="checkbox"/>	BOMBA DE LODOS { BO-15 } TSURUMI	Horometro BO-15	Yes		Yes
<input type="checkbox"/>	BOMBA DE LODOS { BO-15 } TSURUMI	Horometro	Yes	H-BO-15	Yes
<input type="checkbox"/>	BOMBA DE LODOS { BO-20 } GRINDEX	prueba	Yes	78+6	No

Showing 148 of 1628

